

# BASIS OF BEARING

Forward bearing as published by the U.S.C. and G.S. from  $\Delta$  COLLEGE to  $\Delta$  VALLEY Dated 1946.

SCALE: 1"=30'

## LEGEND

- Found 5/8" iron pin with plastic cap marked AP&A (unless otherwise noted), set by plat of Highland Hills Addition
- Found 1/2" iron pin with plastic cap marked AP&A (unless otherwise noted), set by plat of Highland Hills Addition
- ◆ Found 5/8" iron pin with plastic cap marked BGA SURVEY MARKER, set by Survey Number 3-90
- ◆ Found 5/8" iron pin with plastic cap marked BGB SURVEY MARKER set by Survey Number 025-2009
- ▲ Found 5/8" iron pin with plastic cap marked BGB SURVEY MARKER, set by Survey Number 015-2010
- ⊗ Found unrecorded PK Nail, accepted as centerline monument
- Set 5/8"x30" iron pin with plastic cap marked BGB SURVEY MARKER
- ( ) Record measurement as per Plat of Highland Hills Addition
- { } Record measurement as per Survey Number 3-90
- [ ] Record measurement by deed (MF 995603, MF 994456)
- Centerline
- x- Existing fence line
- .-.- Easement Line

## REFERENCE MATERIAL

Plat of Highland Hills Addition  
Survey Number 3-90  
Survey Number 3-92  
Survey Number 025-2009  
Survey Number 015-2010

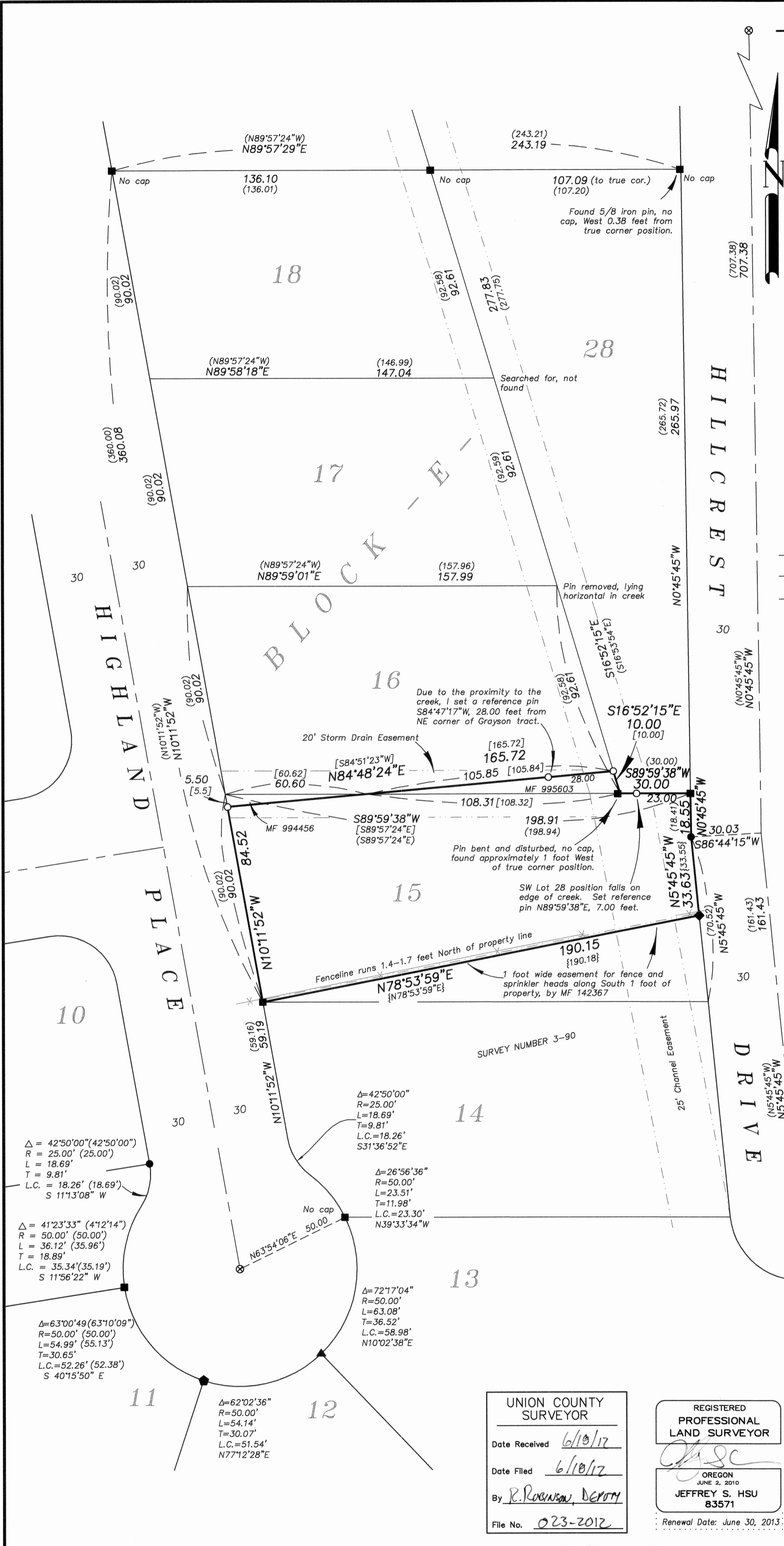
### DEED REFERENCES

Microfilm Document Number 143266  
Microfilm Document Number 994456  
Microfilm Document Number 995603  
Microfilm Document Number 995604  
Microfilm Document Number 142367  
Microfilm Document Number 20027120  
Microfilm Document Number 20066675  
Microfilm Document Number 20090778  
Microfilm Document Number 20101976

## NARRATIVE

This survey was done at the request of Kevin and Angie Grayson, owners of the land within. The Graysons wanted to monument the exterior of their ownership. I recover the monuments as shown hereon. Monuments along Highland Drive are harmonious with plat of Highland Hills. Much of the original monumentation could not be located and I proportion distances between found pins to establish lot corners along Highland Drive. Many of the monuments along the East line of lots 16-18 could not be found or were disturbed by the creek. The North line of Lot 28 varies slightly from the original plat, but as the pins appear to be in good condition and are in line, I hold these pins to establish the North line of Lots 28 and 18. The PK Nails, though unrecorded, are harmonious with positions of both the original plat, and the found monuments along the East line of Lot 15, so I hold their position to establish the centerline of Hillcrest Drive. The Northeast corner of Lot 28 falls off the West line of the right of way as shown, so I treat the corner as a closing corner and drive a line from the pins along the North line of Lot 18 through this pin to the right of way to establish the true position. To establish the North line of Lot 15, I drive a line from the proportioned position at the Northwest corner to the found pin position at the Northeast. I use the proportioned position of the angle point along this North line (SW Lot 28), as it appears that the monument has been disturbed by the creek. I establish the Northeast corner of Lot 16 by proportion between said angle point and the found monument at the Northeast corner of Lot 18. The adjustment that changed the title line along the North line of Grayson tract appears to be done in 1999, however, there does not appear to be any record of survey. The intent of the conveyance appears to be to move the line 10 feet North, along the East end of Lot 16 and 5.5 feet South along the West end of Lot 15. I place the line accordingly. Several of the corner positions fall very close to the creek. I set additional reference pins to perpetuate the positions, should the monuments be removed or disturbed by the creek. A fence line encroaches as shown on the South line. It appears to be accounted for by an easement granted by MF 142367, though it does fall slightly outside of the easement.

I find no other unusual conditions with this survey.



UNION COUNTY  
SURVEYOR

Date Received 6/10/12

Date Filed 6/10/12

By R. ROBINSON, DEPUTY

File No. 023-2012

REGISTERED  
PROFESSIONAL  
LAND SURVEYOR

*J. S. H.*

OREGON  
JUNE 2, 2010

JEFFREY S. HSU  
83571

Renewal Date: June 30, 2013.

**BAGETT, GRIFFITH & BLACKMAN**  
2006 Adams Avenue, LaGrande, Oregon  
Map of Survey

A portion of Lots 15 and 16, Block 'E', Highland Hills Addition to the City of La Grande

UNION COUNTY, OREGON

SURVEYED FOR	Kevin and Angie Grayson
SURVEYED BY	J. S. H.
Scale: 1" = 30'	Drawn by: J. S. H. June 2012

SURVEY NUMBER 023-2012