

Found brass cap monument 0.73 ft. South and 1.88 ft. East of record position. Monument possibly disturbed during movement of hillside. Did not set additional monument. Dimensions are to the record position.

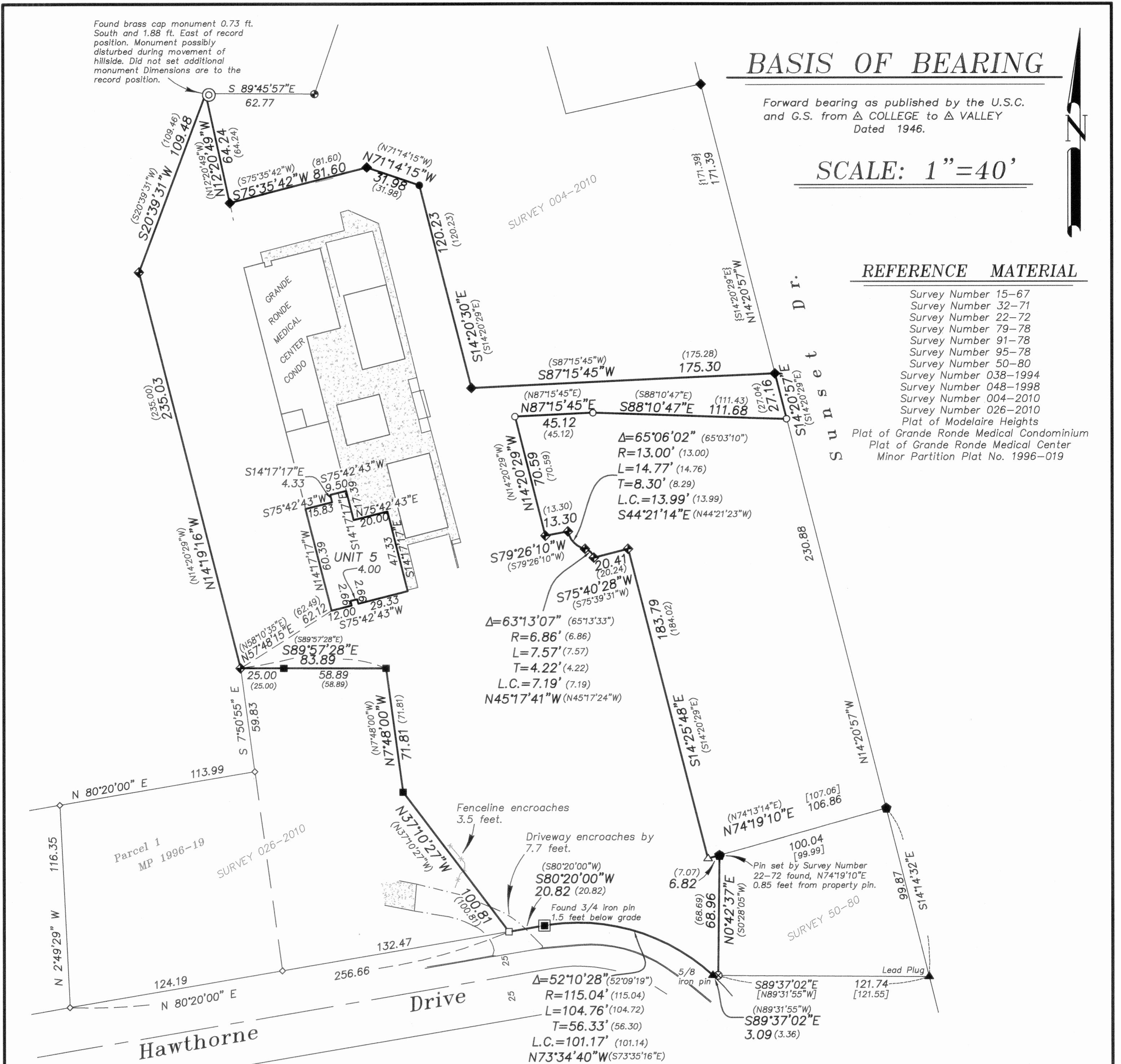
BASIS OF BEARING

Forward bearing as published by the U.S.C. and G.S. from Δ COLLEGE to Δ VALLEY Dated 1946.

SCALE: 1" = 40'

REFERENCE MATERIAL

- Survey Number 15-67
- Survey Number 32-71
- Survey Number 22-72
- Survey Number 79-78
- Survey Number 91-78
- Survey Number 95-78
- Survey Number 50-80
- Survey Number 038-1994
- Survey Number 048-1998
- Survey Number 004-2010
- Survey Number 026-2010
- Plat of Modelaire Heights
- Plat of Grande Ronde Medical Condominium
- Plat of Grande Ronde Medical Center
- Minor Partition Plat No. 1996-019



LEGEND

- ◆ Found 5/8" iron pin with plastic cap marked BGB SURVEY MARKER, set by Survey Number 004-2010
- Found 5/8" iron pin with plastic cap marked BGA SURVEY MARKER, set by Survey Number 038-1994
- ⊕ Found 5/8" iron pin set by Survey Number 048-1998
- Found 5/8" iron pin as per plat of Grande Ronde Medical Center Subdivision
- Found 5/8" iron pin with plastic cap marked BGB SURVEY MARKER set by Survey Number 026-2010
- ▣ Found 3/4" iron rod, set by plat of Modelaire Heights
- ◆ Found 5/8" iron pin, called as unrecorded monument in Survey Number 22-72
- ⊗ Found 5/8" iron pin with plastic cap marked BGB SURVEY MARKER set by Survey Number 50-80
- ◇ Found 5/8" iron pin with plastic cap marked BGB SURVEY MARKER set by Minor Partition 1996-019
- ⊙ Found 2 1/2" Brass Cap, set by Grande Ronde Medical Condominium
- △ Found 5/8" iron pin with plastic cap marked BGA SURVEY MARKER, set by Survey Number 79-78
- ◆ Found 5/8" iron pin set by plat of Grande Ronde Medical Condominium
- ▲ Found monument as noted, set by Survey Number 15-67
- Set 5/8" x 30" iron pin with plastic cap marked BGB SURVEY MARKER
- () Record measurement as per plat of Grande Ronde Medical Condominium
- [] Record measurement as per Survey Number 50-80
- { } Record measurement as per plat of Grande Ronde Medical Center
- Centerline

NARRATIVE

This survey was done at the request of Tim Wilcox, on behalf of Grande Ronde Hospital. This survey was to monument the exterior of the common area of the Grande Ronde Medical Condominium in preparation for an ALTA survey of the property. I find the monuments as shown hereon. The positions of the found monuments are relatively harmonious with the original plat of Grande Ronde Medical Condominium. Those monuments along the South edge of the flag entrance from Sunset Drive have been lost. I replace these at record bearing and distance from the nearest found original monuments to the South. My placement of the West line of the Sunset Drive right of way differs slightly from the original plat. I extend the most Easterly course to the right of way line. The driveway and fence encroachment along the South line, as noted in Survey Number 026-2010 has not changed since then. I find no other unusual conditions with this survey.

REGISTERED PROFESSIONAL LAND SURVEYOR

OREGON
JUNE 2, 2010
JEFFREY S. HSU
83571

Renewal Date: June 30, 2013

UNION COUNTY SURVEYOR

Date Received 3/30/12

Date Filed 3/30/12

By R. Robinson, Deputy

File No. 017-2012

BAGETT, GRIFFITH & BLACKMAN 2006 Adams Avenue, LaGrande, Oregon ACSM/ALTA LAND TITLE SURVEY	
Unit 5, Grande Ronde Medical Condominium City of La Grande	
UNION COUNTY, OREGON	
SURVEYED FOR	Grande Ronde Hospital Inc.
SURVEYED BY	J. S. H.
Scale: 1" = 10'	Drawn by: J. S. H. Mar. 2012

SURVEY NUMBER 017-2012