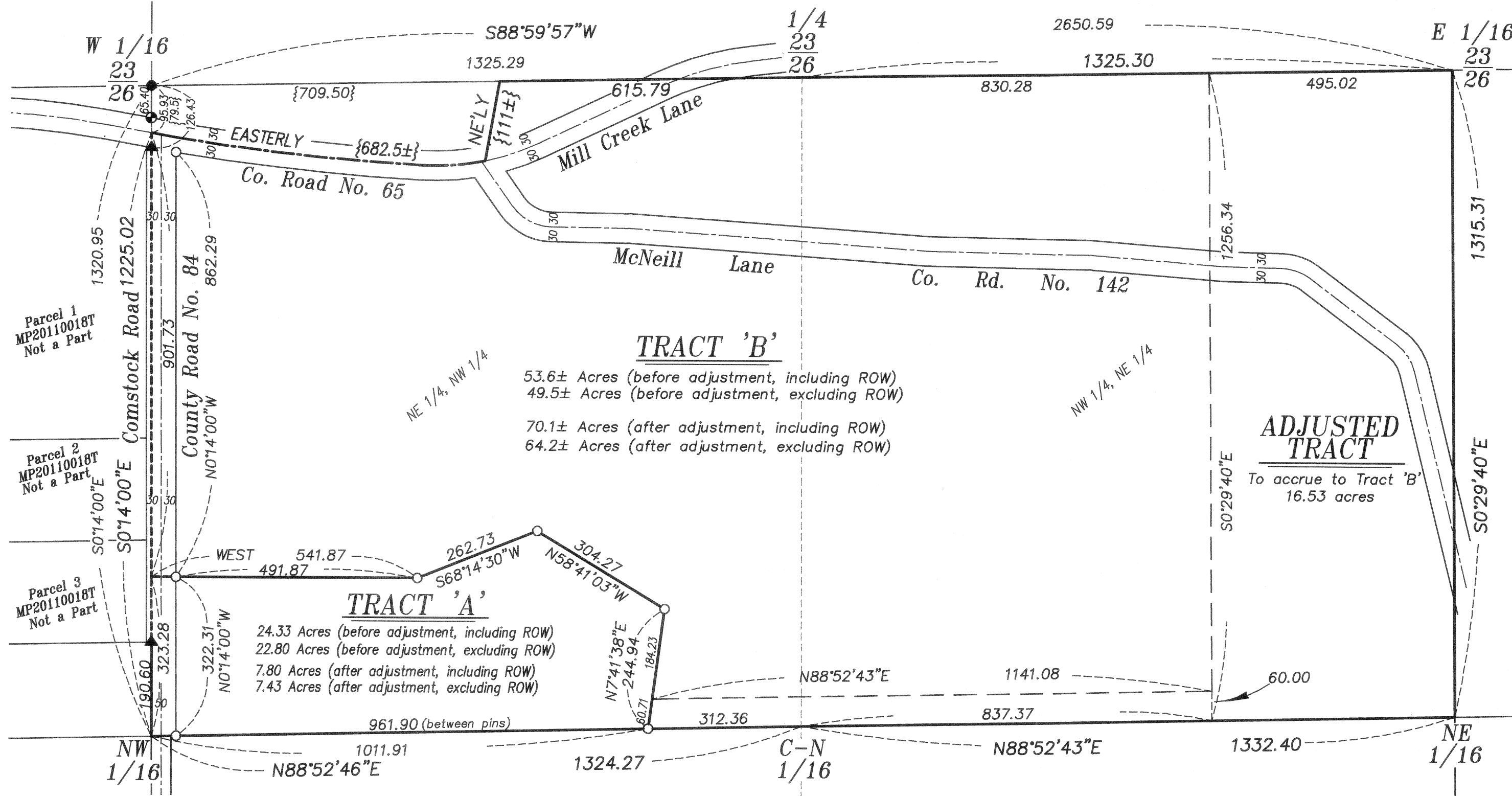


BOUNDARY LINE ADJUSTMENT

Situating in the Northwest quarter of the Northeast quarter and the Northeast quarter of the Northwest quarter of Section 26, Township 3 South, Range 40 East of the Willamette Meridian



BASIS OF BEARING

Solar observation taken at the Southwest corner of Section 15, Township 3 South, Range 40 East of the Willamette Meridian.

SCALE: 1" = 200'

LEGEND

- Found 1 1/4" iron pipe with brass cap set by Survey Number 46-79, unless otherwise noted
- Found 5/8" iron pin with plastic cap marked BGA SURVEY MARKER, set by plat of Vista Acres Subdivision
- Found 5/8" iron pin with plastic cap marked BGB SURVEY MARKER, set by Survey Number 013-1997
- ▲ Found 5/8" iron pin with plastic cap marked BGB SURVEY MARKER, set by Minor Partition 20110018T
- Set 5/8" iron pin with plastic cap marked BGB SURVEY MARKER
- Centerline
- () Record measurement as per Survey Number 46-79
- { } Record deed call as per microfilm number 20104350

TRACT 'A'

24.33 Acres (before adjustment, including ROW)
22.80 Acres (before adjustment, excluding ROW)
7.80 Acres (after adjustment, including ROW)
7.43 Acres (after adjustment, excluding ROW)

TRACT 'B'

53.6± Acres (before adjustment, including ROW)
49.5± Acres (before adjustment, excluding ROW)
70.1± Acres (after adjustment, including ROW)
64.2± Acres (after adjustment, excluding ROW)

ADJUSTED TRACT

To accrue to Tract 'B'
16.53 acres

NARRATIVE

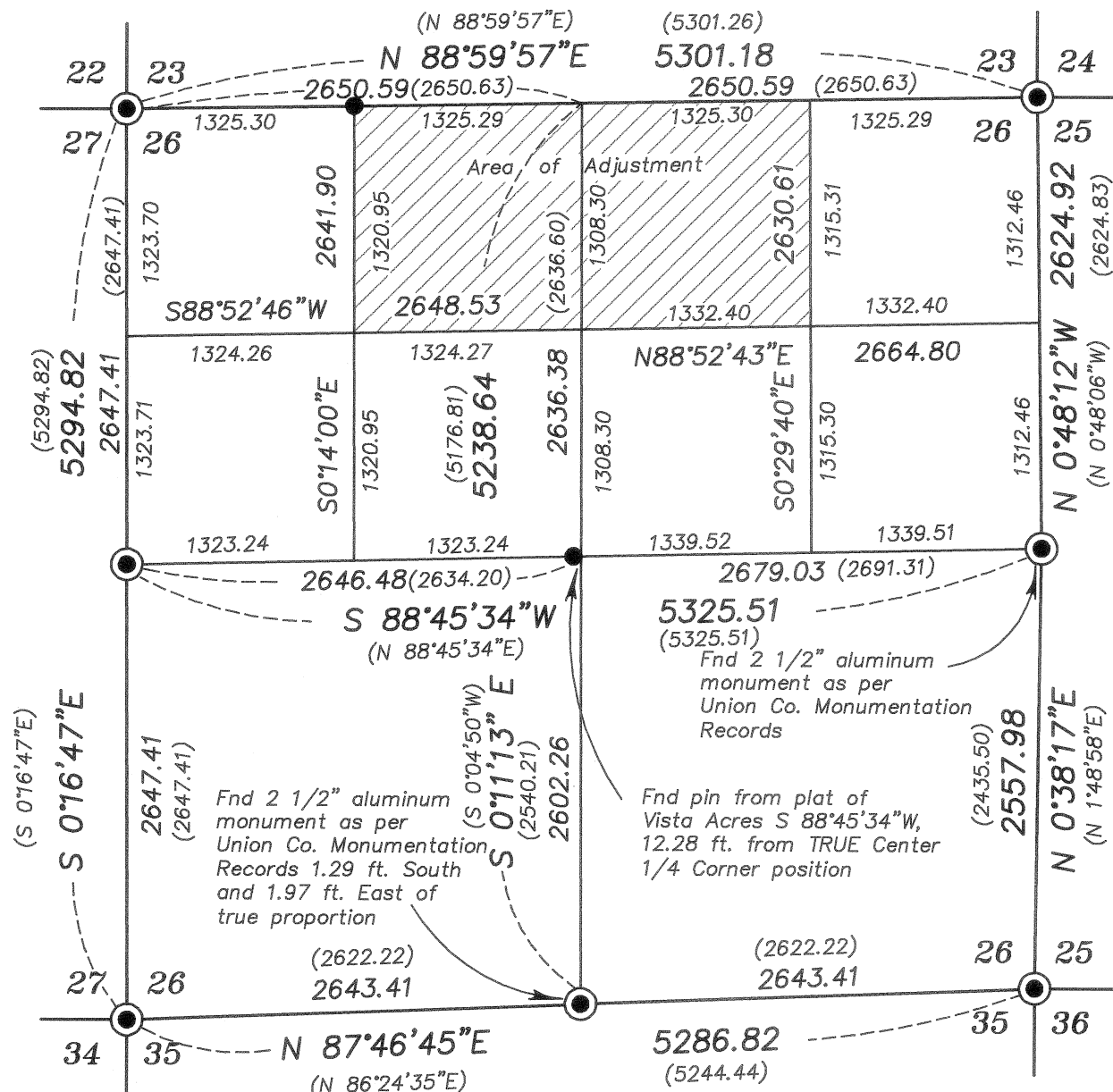
This lot line adjustment was done at the request of Brian Sickels, managing member for Buck Acres, LLC, owner of the land within. Mr. Sickels wanted to adjust the common line between his two adjoining tracts to the line shown hereon. I base the section break on Survey Number 55-81. The exteriors of Tract A are monumented and surveyed. Tract B is unsurveyed. I find no unusual conditions with this lot line adjustment.

REFERENCE MATERIAL

Union County Monumentation Records
Plat of Vista Acres Subdivision
Survey Number 46-79
Survey Number 55-81
Survey Number 013-1997
Minor Partition 20110018T

DEED REFERENCES

Microfilm Document Number 986598
Microfilm Document Number 20042074
Microfilm Document Number 20104348
Microfilm Document Number 20104350
Microfilm Document Number 20104351



Subdivision of Section 26

Scale 1" = 1000'

REGISTERED
PROFESSIONAL
LAND SURVEYOR

OREGON
JUNE 2, 2010
JEFFREY S. HSU
83571

Renewal Date: June 30, 2013

UNION COUNTY
SURVEYOR

Date Received 3/7/2012

Date Filed 3/7/2012

By R. ROBINSON, DEPUTY

File No. 013-2012

BAGETT, GRIFFITH & BLACKMAN
2006 Adams Avenue, LaGrande, Oregon

Map of Survey
Situating in the Northwest quarter of the Northeast quarter and the Northeast quarter of the Northwest quarter of Section 26, Township 3 South, Range 40 East of the Willamette Meridian

UNION COUNTY, OREGON

SURVEYED FOR Brian Sickels

SURVEYED BY J. S. H.

Scale: 1" = 200' Drawn by: J. S. H. Feb. 2012

SURVEY NUMBER 013-2012