

BASIS OF BEARING

Forward bearing as published by the U.S.C.
and G.S. from Δ COLLEGE to Δ VALLEY
Dated 1946.

SCALE: 1" = 100'

REFERENCE MATERIAL

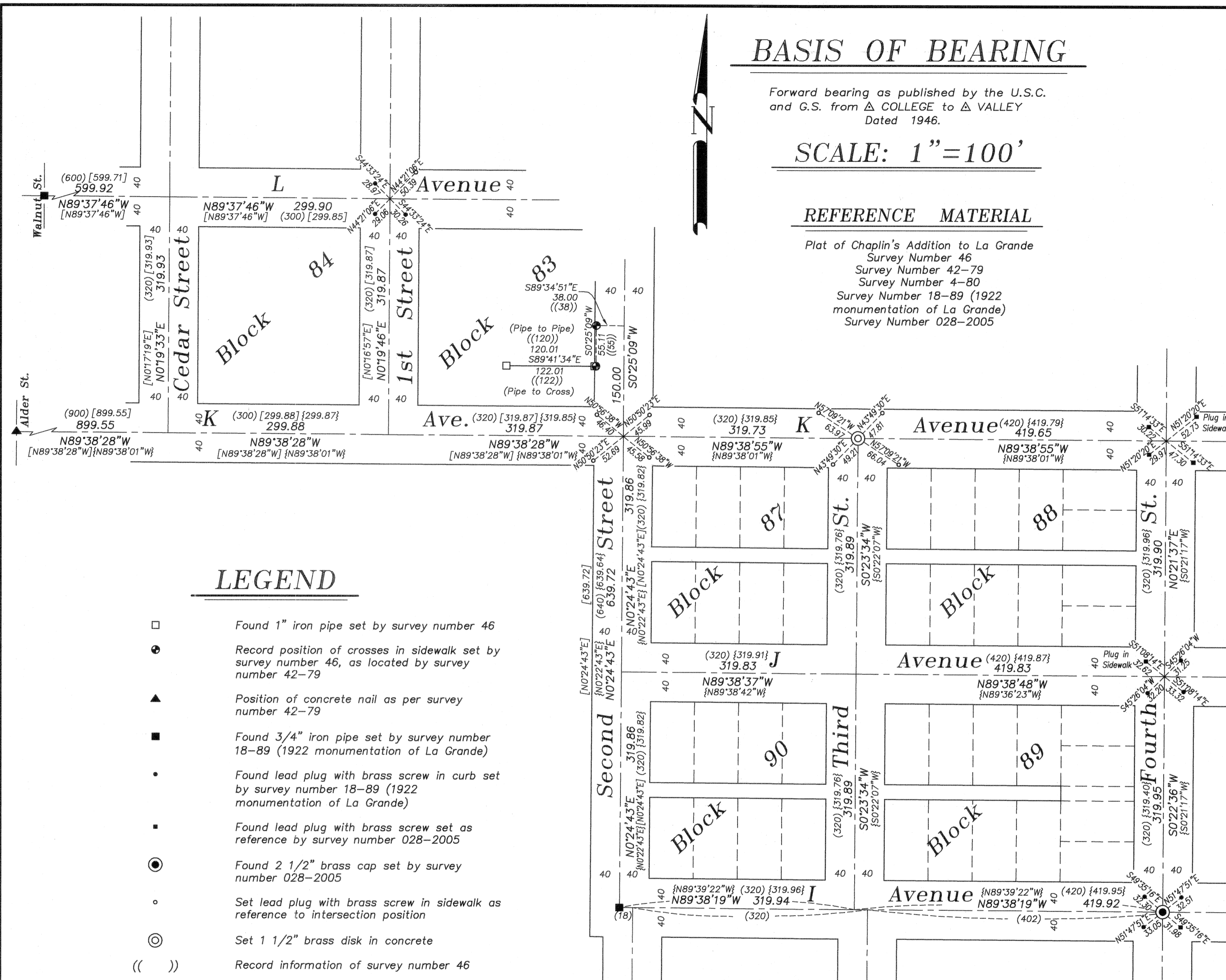
Plat of Chaplin's Addition to La Grande
Survey Number 46
Survey Number 42-79
Survey Number 4-80
Survey Number 18-89 (1922
monumentation of La Grande)
Survey Number 028-2005

NARRATIVE

This survey was done at the request of Norm Paullus, Public Works Director for the City of La Grande. The purpose of this survey is to monument the intersections along K Avenue as part of a street construction project. I use survey number 42-79 as the basis for the placement of the intersection of 2nd Street and K Avenue. I further detail the retracement of survey number 46 in Block 83. The 1979 survey shows the monuments of that survey, but does not dimension the positions. The intersection of 2nd Street and K Avenue was placed in 1979 by driving a line 38 feet East of and parallel with the found crosses in the sidewalk, record distance (150.00 feet) from the Northernmost cross. The placement of the centerline of 2nd Street South of K Avenue was established by driving a line from the found pipe at the intersection of 2nd Street and I Avenue North to the intersection of 2nd Street and K Avenue. In retracing the 1979 survey, it was discovered that the Northeast reference plug in the curb at the intersection of L Avenue and 2nd Street has been destroyed. I establish the intersection position of 2nd Street and L Avenue by intersecting the line between the Northwest and Southeast references with the record bearing from the pipe found at the intersection of Walnut Street and L Avenue. I reset a screw with brass washer set in the sidewalk for the Northeast reference. Upon relocating the controlling monuments of the 1979 survey, I find minor differences in position as shown. Having reestablished the intersection of 2nd Street and K Avenue, I place the intersection of 3rd Street and K Avenue by proportionate distance from 2nd Street and K Avenue to the found monumented intersection of 4th Street and K Avenue. I also show the location of streets from 2nd Street to 4th Street, from I Avenue to K Avenue to prove the harmony with the positions determined by survey number 4-80. I find no unusual conditions on this survey.

LEGEND

- Found 1" iron pipe set by survey number 46
- Record position of crosses in sidewalk set by survey number 46, as located by survey number 42-79
- ▲ Position of concrete nail as per survey number 42-79
- Found 3/4" iron pipe set by survey number 18-89 (1922 monumentation of La Grande)
- Found lead plug with brass screw in curb set by survey number 18-89 (1922 monumentation of La Grande)
- Found lead plug with brass screw set as reference by survey number 028-2005
- ⊙ Found 2 1/2" brass cap set by survey number 028-2005
- Set lead plug with brass screw in sidewalk as reference to intersection position
- ⊙ Set 1 1/2" brass disk in concrete
- (()) Record information of survey number 46
- [] Record information of survey number 42-79
- { } Record information of survey number 4-80
- () Record information of survey number 18-89
- Centerline



REGISTERED
PROFESSIONAL
LAND SURVEYOR

Rick G. Robinson
OREGON
JULY 17, 1986
RICK G. ROBINSON
2219

Renewal Date: Dec. 31, 2012

UNION COUNTY
SURVEYOR
Date Received 2/9/2012
Date Filed 2/27/2012
By *Ryan Plak*
File No. 008-2012

BAGETT, GRIFFITH & BLACKMAN
2006 Adams Avenue, LaGrande, Oregon
Map of Survey
Monumentation of selected intersections on K and L Avenues
UNION COUNTY, OREGON
SURVEYED FOR City of La Grande
SURVEYED BY R.G.R. 1/2012
Scale: 1" = 100' Drawn by: R.G.R. 1/2012