

RECORD OF SURVEY

for
**THE UNITED STATES OF AMERICA
CITY OF LA GRANDE
AND KLEINFELDER WEST, INC**

in the

**WEST HALF OF SECTION 33 AND
WEST HALF OF SECTION 28
TOWNSHIP 3 SOUTH, RANGE 39 EAST, WILLAMETTE MERIDIAN,
UNION COUNTY, OREGON**

WRP EASEMENT No. 66-0436-0-120

NOVEMBER 2, 2011

LEGEND

●Found Monument: 5/8" rod with Aluminum cap stamped "USDA NRCS PLS 2537" per SN 008-2002 unless noted.

○Set Monument: 5/8" x 30" rebar with a red plastic cap stamped "NORTHSTAR SURVEYING".

+Computed Position, nothing found or set.

Data of, or computed from, the following:
()..SN 008-2002

SN = Union County Survey Number

MR: = Monumentation Record

NARRATIVE

THE PURPOSE OF THIS SURVEY WAS TO RELOCATE MONUMENTS DEFINING THE TULE LAKE WETLANDS RESERVE PROGRAM EASEMENT (66-0436-0-120) THAT WERE FOUND OR SET PER SURVEY NUMBER 008-2002. ADDITIONAL MONUMENTS WERE SET AS NEEDED ALONG THE LINES WHERE THE DISTANCE EXCEEDED 500 FEET FROM THE FOUND EASEMENT CORNERS. A GREEN STEEL "U" POST WITH A "CONSERVATION EASEMENT BOUNDARY" SIGN WAS PLACED AT EACH CORNER AND LINE POINT.

THE BASIS FOR THIS CURRENT SURVEY WAS SN 008-2002. IN ADDITION THERE IS AN ADJACENT WRP EASEMENT CALLED WALLENDER (66-0436-8-7277) ALONG THE WEST SIDE OF PEACH ROAD. MONUMENTS (A),(B), AND (C) WERE HELD TO DEFINE THE SECTION LINE, AS WELL AS THE CENTERLINE OF PEACH ROAD. THE CORNER OF SECTIONS 20,21,28, AND 29 (D) WAS NOT SET FOR SN 008-2002, BUT IT WAS COMPUTED BY IT. FOR THIS CURRENT SURVEY I HELD THE SECTION CORNER MONUMENT AT (C) AND THE RIGHT-OF-WAY MONUMENT AT (E) TO COMPUTE (D) AND THE LINE BETWEEN SECTIONS 28 AND 29, WHICH IS ALSO THE PEACH ROAD CENTERLINE. THE RESULTANT BEARING FROM (C) TO (D) MISSED THE RECORD BY ALMOST A MINUTE, SO I WAS SUSPICIOUS. I THEN CHECKED THE RELATIONSHIP OF THE OTHER FOUND MONUMENTS AT (F),(H),(O),(P), AND (Q) RELATIVE TO THIS COMPUTED SECTION LINE. I FOUND THEM TO CLOSELY FIT EACH OTHER PER THE RECORD. THEREFORE I WOULD ASSUME THAT THERE WERE CHANGES IN THE FIELD CALCULATIONS USED TO PLACE THE MONUMENTS, AND THE MAP WAS NOT UPDATED. THE MONUMENTS ALONG PEACH ROAD WERE SET AT 40 FEET FROM THE SECTION LINE AND CALCULATED SECTION LINE.

POSITION (S) WAS COMPUTED AND PLACED AT THE RECORD POSITION RELATIVE TO (D). MY INSPECTION OF THE POSITION OF MONUMENTS (O),(P), AND (Q) RELATIVE TO (E) AND (S) LED ME TO BELIEVE THAT (O) WAS IN THE BEST RECORD POSITION. THEN USING (S) AND (O) I COMPUTED (R) BY INTERSECTION OF RECORD DISTANCES.

MANY OF THE MONUMENTS (20 OF 24) SHOWN AS SET PER SN 008-2002 WERE NOT RECOVERED. IT WAS CLEAR IN A NUMBER OF THE POSITIONS THAT THE GROUND WAS UNDISTURBED, SO I SUSPECT NOTHING WAS SET. I CALCULATED THE POSITIONS HOLDING AS CLOSELY TO THE RECORD POSITIONS AS I COULD. RECORD BEARINGS AND DISTANCES WERE HELD FROM (E) TO COMPUTE (G), AND FROM (H) TO COMPUTE (J). THE RESULTING COURSE BETWEEN (G) AND (J) FIT THE RECORD NICELY. EASEMENT CORNERS (N) AND (L) WERE COMPUTED AT THE RECORD RELATIONSHIP WITH THE SECTION LINE (A) TO (B). POSITION (K) WAS COMPUTED AT THE RECORD BEARING AND DISTANCE FROM (H). THE MISSING ANGLE POINT IN THE EAST LINE WAS PLACED BY PROPORTIONATE TRIANGLES BETWEEN (K) AND (L) AGAIN FITTING THE RECORD NICELY. PARCEL 3 WAS PLACED AT THE RECORD DISTANCE FROM THE SECTION CORNER (C), AND PARCEL 4 AT THE RECORD DISTANCE FROM THE QUARTER CORNER AT (B).

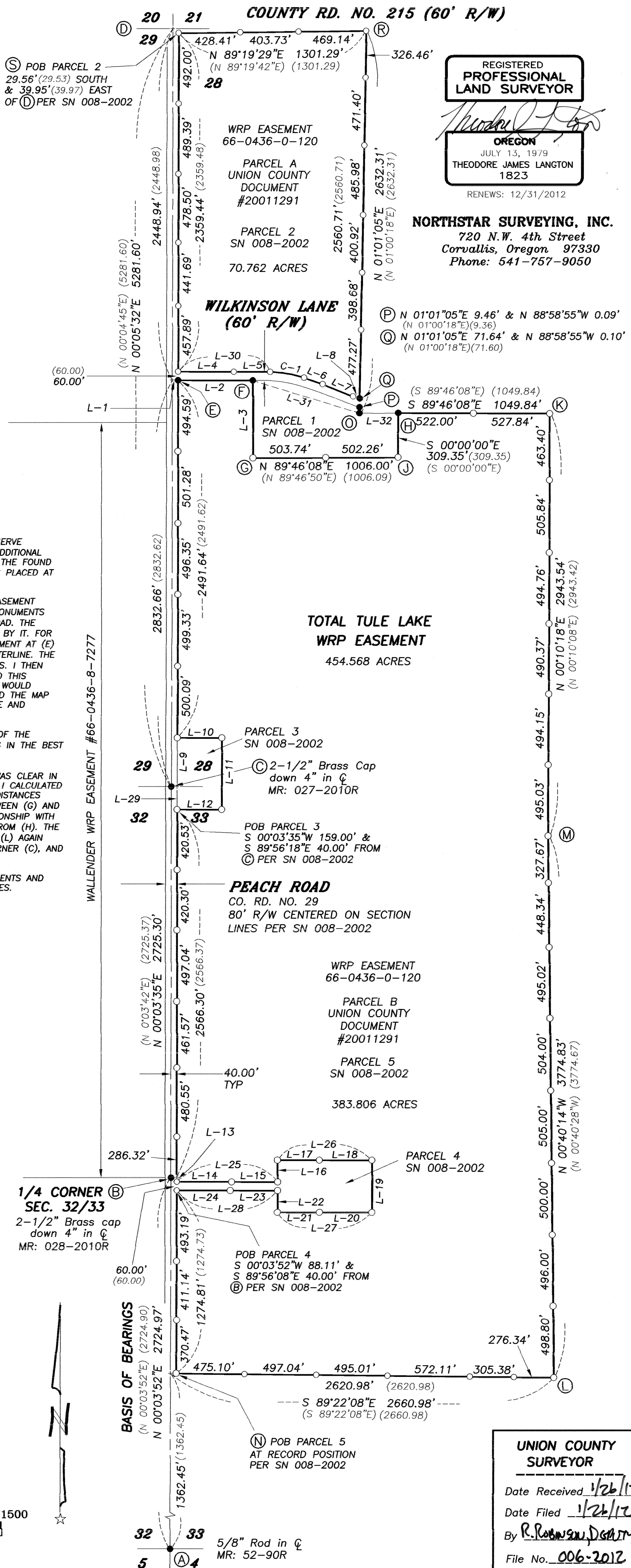
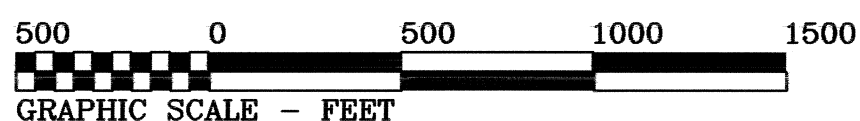
THE NARRATIVES FROM BOTH SN 005-1998 AND SN 008-2002 EXPLAIN HOW THE CONTROLLING MONUMENTS AND GOVERNMENT CORNER POSITIONS SHOWN ARE THE BEST EVIDENCE FOR THE SECTION AND PROPERTY LINES.

CURVE TABLE

CURVE	RADIUS	LENGTH	DELTA	CHORD	CH.BEARING
C-1	715.16' (715.16')	239.30' (239.29)	19°10'17" (19°10'17")	238.18'	S 80°17'54"E

CALL TABLE

COURSE	BEARING	DISTANCE	COURSE	BEARING	DISTANCE
L-1	S 89°54'28"E (S 89°55'15"E)	40.00' (40.00)	L-18	S 89°56'08"E (S 89°56'08"E)	365.22'
L-2	S 89°52'08"E (S 89°52'51"E)	518.83' (518.88)	L-19	S 00°03'48"W (S 00°03'48"W)	363.74' (363.74)
L-3	S 00°11'58"E (S 00°11'58"E)	539.77' (539.77)	L-20	N 89°56'08"W (N 89°56'08"W)	363.99'
L-4	S 89°52'08"E (S 89°52'51"E)	387.63' (387.63)	L-21	N 89°56'08"W (N 89°56'08"W)	292.01'
L-5	S 89°52'08"E (S 89°52'51"E)	251.12' (251.12)	L-22	N 00°03'52"E (N 00°03'52"E)	151.45' (151.45)
L-6	S 70°43'30"E (S 70°42'34"E)	137.22' (137.24)	L-23	N 89°56'08"W (N 89°56'08"W)	328.45'
L-7	S 67°58'40"E (S 67°57'44"E)	226.97' (227.00)	L-24	N 89°56'08"W (N 89°56'08"W)	371.55'
L-8	S 73°34'13"E (S 73°33'36"E)	48.01' (48.02)	L-25	S 89°56'08"E (S 89°56'08"E)	700.00' (700.00)
L-9	N 00°05'32"E (N 00°04'45"E)	341.01' (341.01)	L-26	S 89°56'08"E (S 89°56'08"E)	656.00' (656.00)
L-10	S 89°56'18"E (S 89°56'18"E)	309.89' (309.89)	L-27	N 89°56'08"W (N 89°56'08"W)	656.00' (656.00)
L-11	S 00°04'55"W (S 00°03'42"W)	500.00' (500.00)	L-28	N 89°56'08"W (N 89°56'08"W)	700.00' (700.00)
L-12	N 89°56'18"W (N 89°56'18"W)	309.89' (309.89)	L-29	N 00°03'35"E (N 00°03'42"E)	158.99' (158.99)
L-13	S 00°03'52"W (S 00°03'52"W)	28.11' (28.11)	L-30	S 89°52'08"E (S 89°52'51"E)	638.75' (638.78)
L-14	S 89°56'08"E (S 89°56'08"E)	380.49' (380.49)	L-31	S 75°09'37"E (S 75°09'55"E)	765.01' (765.05)
L-15	S 89°56'08"E (S 89°56'08"E)	319.51' (319.51)	L-32	S 83°33'53"E (S 83°31'30"E)	270.08' (270.19)
L-16	N 00°03'42"E (N 00°03'42"E)	152.29' (152.29)			
L-17	S 89°56'08"E (S 89°56'08"E)	290.78' (290.78)			



REGISTERED
**PROFESSIONAL
LAND SURVEYOR**

OREGON
JULY 13, 1979
THEODORE JAMES LANGTON
1823
RENEWS: 12/31/2012

NORTHSTAR SURVEYING, INC.
720 N.W. 4th Street
Corvallis, Oregon 97330
Phone: 541-757-9050

**UNION COUNTY
SURVEYOR**

Date Received 1/26/11
Date Filed 1/26/12
By R. Robinson, D.G.M.
File No. 006-2012

SURVEY NUMBER 006-2012