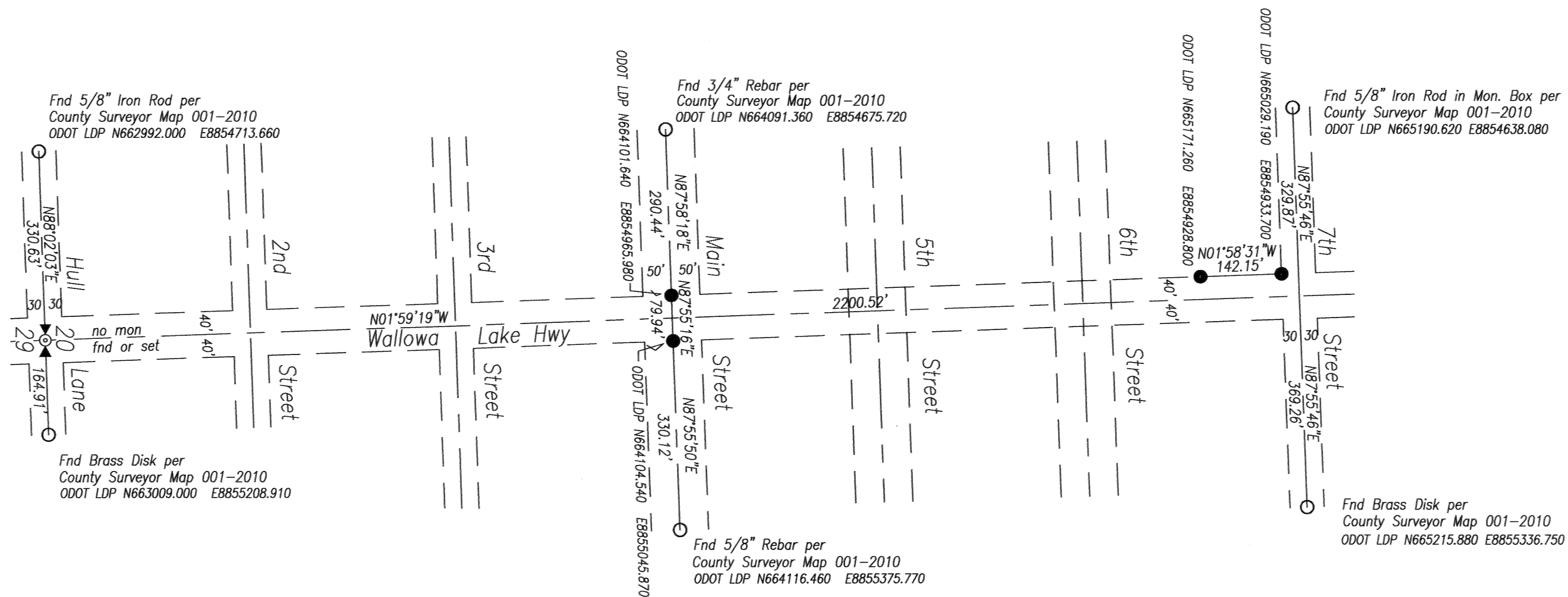


- ▼ Found Quarter Section Corner as Noted
- Set 5/8"x30" Rebar w/ Plastic Cap "PLS 2265"
- Found Monument as Noted



Basis of Bearings

Assumed Bearings of Record per ODOT Control and Retracement, Survey #001-2010, records of the Union County Surveyor.

Narrative of Survey

A survey to replace monuments destroyed during construction of ODOT contract for Imbler Stormwater and Ped Improvements in 2010 and 2011.

Instruments used were Trimble S6 Robotic Total Stations.

Per County Surveyor Map 001-2010, ODOT surveyors had located monuments along the Wallowa Lake Highway. CS 001-2010 lists coordinate values for these found monuments.

Four monuments were destroyed during the construction project. As shown hereon, those monuments have been replaced with 5/8" rebars with yellow plastic caps.

**Section Diagram
Twn 1 S, Rng 39 E, WM**

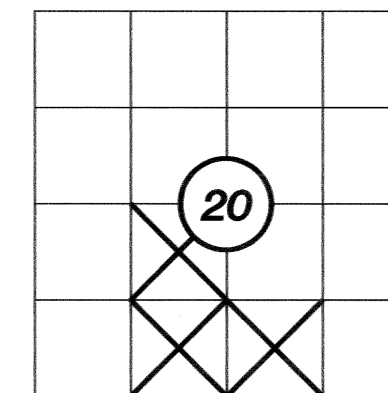
UNION COUNTY
SURVEYOR

Date Received 7/29/11

Date Filed 8/2/11

By R. ROBISON, DEPT

File No. 024-2011



REGISTERED
PROFESSIONAL
LAND SURVEYOR

Randy R. Scott

OREGON
JANUARY 15, 1987
RANDY R. SCOTT
2265

A Record of Survey of
Monuments Replaced for
ODOT: Imbler Stormware & Ped Improvements
Wallowa Lake Hwy
Union County, Oregon

ROBOTIC CONSTRUCTION SURVEYS, INC.
14550 SW ROCK CREEK ROAD
SHERIDAN, OREGON 97378

Drawn By: DMB

Date: Apr 8, 2011

Sheet 1 of 1

SURVEY NUMBER 024-2011