

# BASIS OF BEARING

Forward bearing as published by the U.S.C. and G.S. from  $\Delta$  COLLEGE to  $\Delta$  VALLEY Dated 1946.

SCALE: 1"=100'

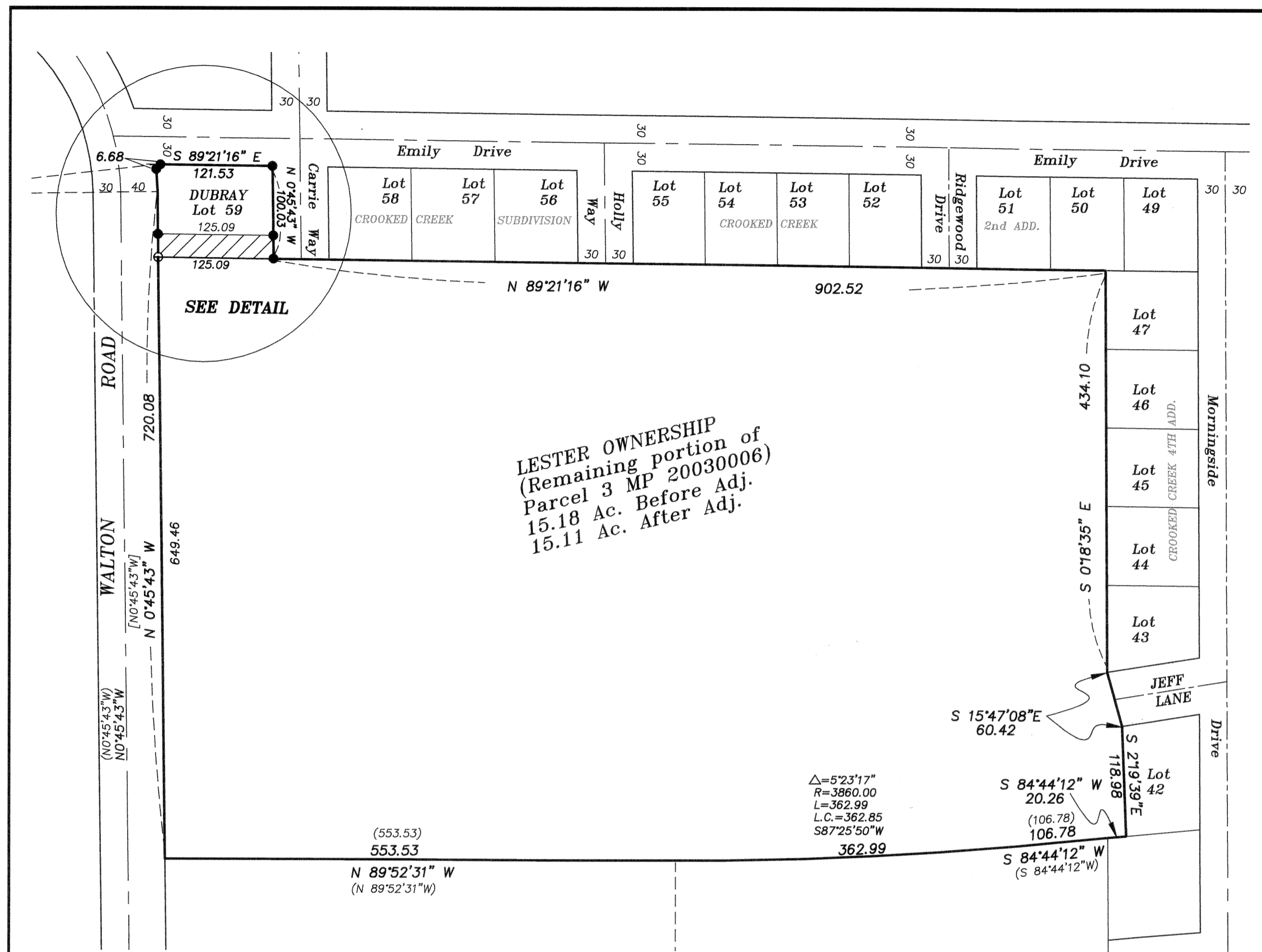
## LEGEND

- Found 5/8" iron pin with yellow plastic cap marked "BGB SURVEY MARKER", set by CROOKED CREEK SUBDIVISION.
- Set 5/8"x 30" iron pin with yellow plastic cap marked "BGB SURVEY MARKER"
- ( ) Record bearing and distance of Major Partition number 2001-013
- [ ] Record bearing and distance of Major Partition number 2003-006
- { } Record bearing and distance of Original Plat of CROOKED CREEK SUBDIVISION
- Existing centerline
- - - Easement line

## REFERENCE MATERIAL

Original Plat of CROOKED CREEK SUBDIVISION  
 Original Plat of CROOKED CREEK 2nd ADDITION  
 Original Plat of CROOKED CREEK 4TH ADDITION  
 Major Partiton Number 2001-013  
 Major Partiton Number 2003-0006  
 Union County Monumentation Records DEEDS

Microfilm No. 20111213  
 Microfilm No. 20021051



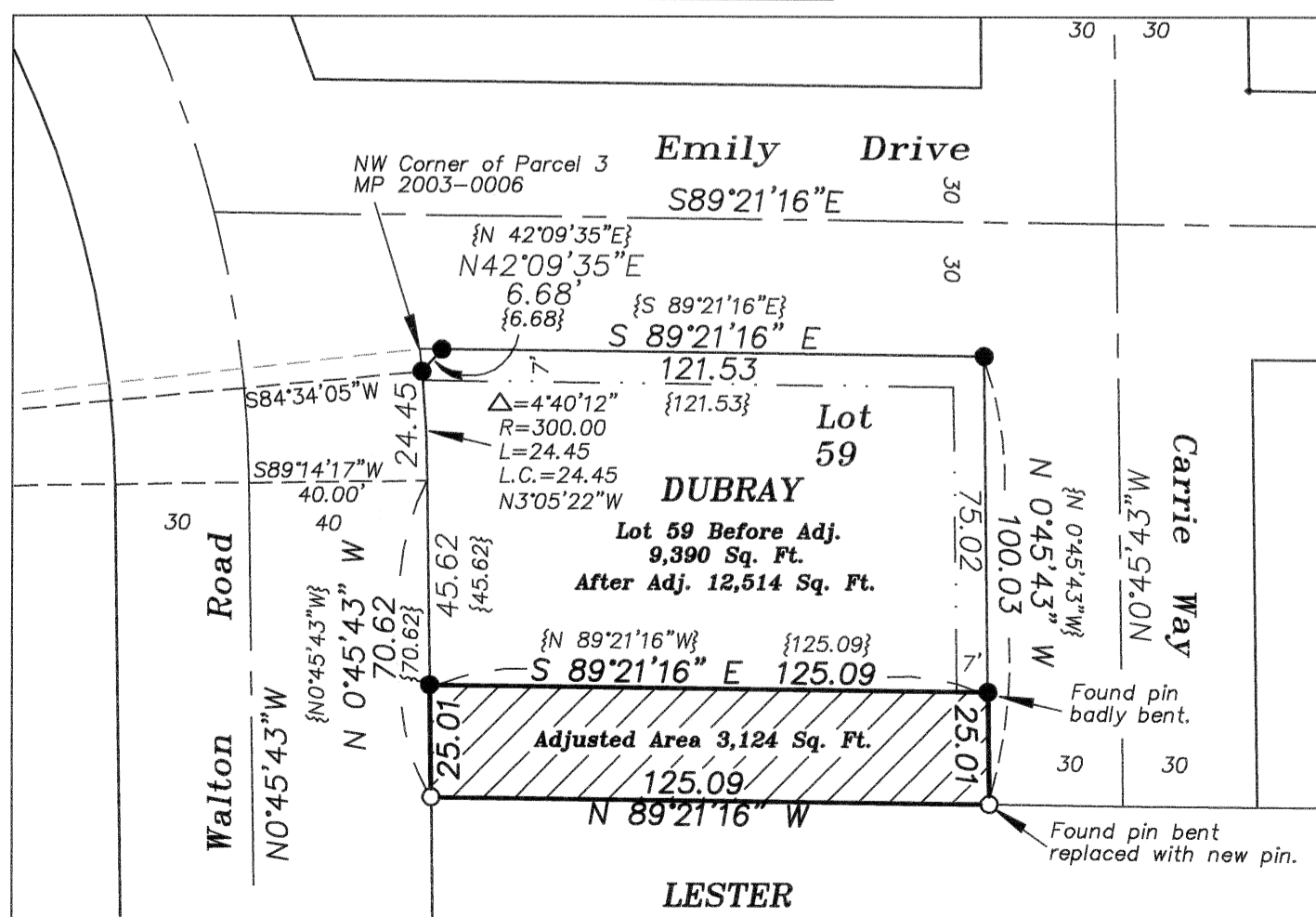
**LESTER OWNERSHIP**  
 (Remaining portion of Parcel 3 MP 20030006)  
 15.18 Ac. Before Adj.  
 15.11 Ac. After Adj.

$\Delta=5'23'17''$   
 $R=3860.00$   
 $L=362.99$   
 $L.C.=362.85$   
 $S87'25'50''W$

(553.53)  
 553.53  
 $N 89'52'31'' W$   
 (N 89'52'31"W)

$S 15'47'08''E$   
 60.42  
 $S 84'44'12'' W$   
 20.26  
 (106.78)  
 106.78  
 $S 84'44'12'' W$   
 (S 84'44'12"W)

## DETAIL



**DUBRAY**  
 Lot 59 Before Adj.  
 9,390 Sq. Ft.  
 After Adj. 12,514 Sq. Ft.

Adjusted Area 3,124 Sq. Ft.

**LESTER**

SCALE: 1"=40'

## APPROVALS

I approve of this Lot Line Adjustment this 3<sup>rd</sup> day of August, 2011

*Judy A. Rygg*  
 Judy A. Rygg, Planning Officer  
 City of Island City

REGISTERED  
 PROFESSIONAL  
 LAND SURVEYOR

OREGON  
 JULY 17, 1986  
**RICK G. ROBINSON**  
 2219

Renewal Date: Dec. 31, 2012

UNION COUNTY  
 SURVEYOR

Date Received August 2, 2011

Date Filed 8/2/11

By G.T.B.

File No. 023-2011

## NARRATIVE

This lot line adjustment was done at the request of Russell Lester. The purpose of this survey is to adjust the property line between Mr. Lester's property and the South line of Lot 59 of CROOKED CREEK SUBDIVISION. I base this survey on Major Partition number 2003-0006 and the original plat of CROOKED CREEK SUBDIVISION. I find the monuments from said Partition and Subdivision plats intact and in good position. I find no unusual conditions with this Survey.

**BAGETT, GRIFFITH & BLACKMAN**  
 2006 Adams Avenue, LaGrande, Oregon  
 Map of Survey

LOT LINE ADJUSTMENT  
 Situated in Lot 59 of CROOKED CREEK SUBDIVISION  
 and a Portion of Parcel 3 of Partiton Plat number 2003-0006.

SURVEYED FOR	Russell Lester
SURVEYED BY	R.G.R.
Scale: 1"=100'	Drawn by: G.T.B. 7/27/11

Survey Number 023-2011