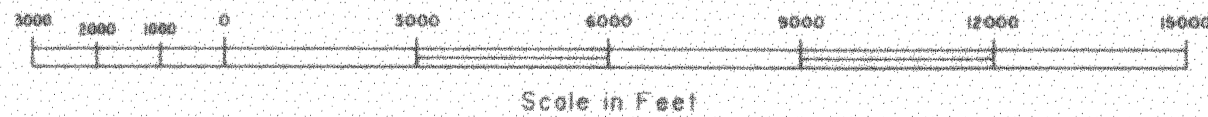
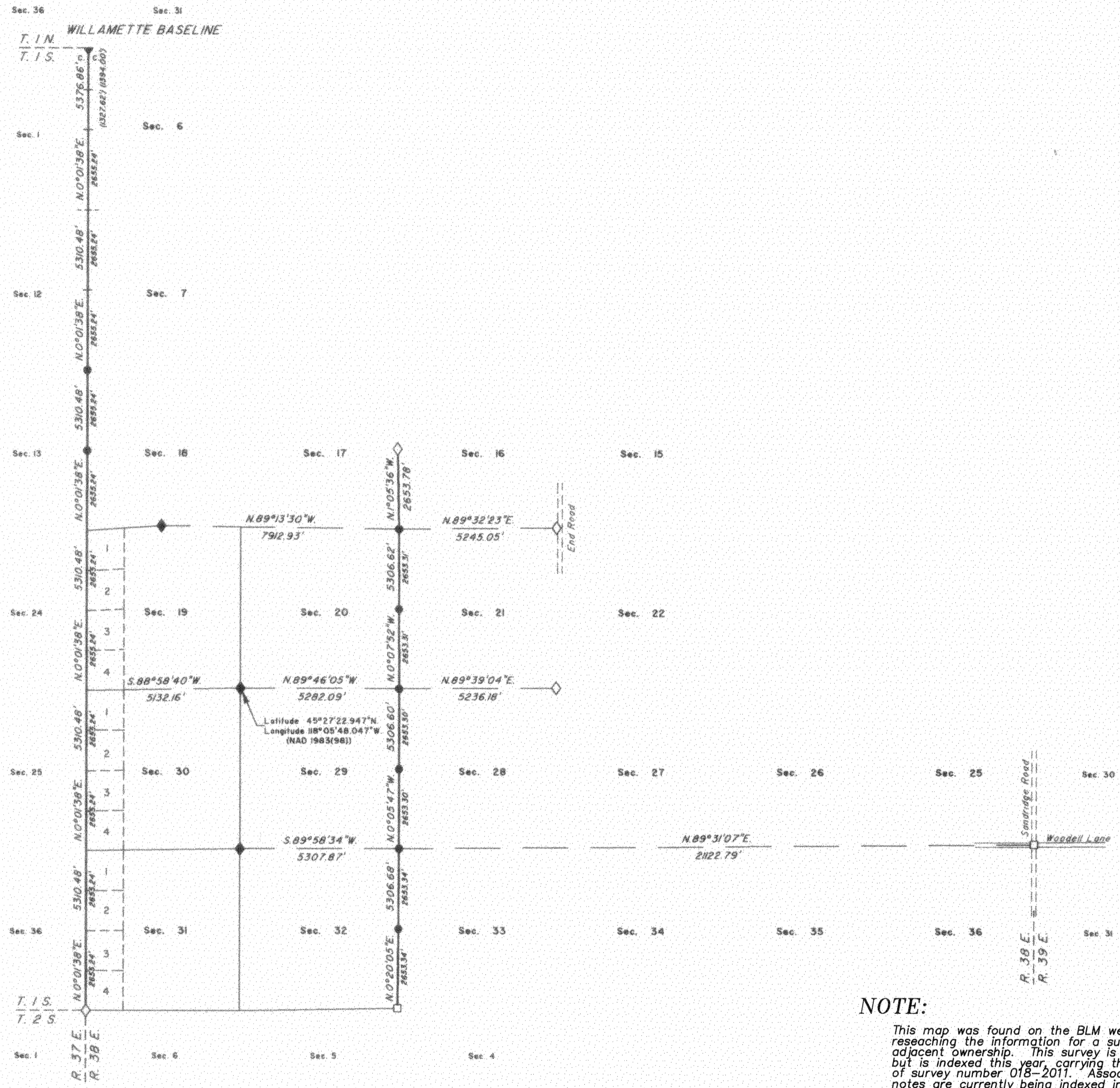
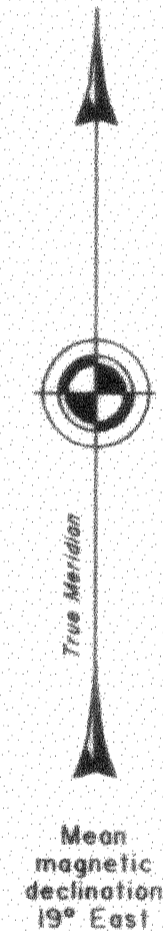


TOWNSHIP 1 SOUTH, RANGE 38 EAST, OF THE WILLAMETTE MERIDIAN, OREGON

DEPENDENT RESURVEY



A history of surveys is contained in the field notes.

This plat represents a dependent resurvey of the west boundary and a portion of the subdivisional lines, T. 1 S., R. 38 E., Willamette Meridian, Oregon, designed to restore the corners in their true original locations according to the best available evidence.

Measured distances and directions have been adjusted by Trimble Geomatics Office (TGO) or Cadastral Measurement Management for Windows (WinCMM), computer software that incorporates a least squares adjustment routine. The adjusted bearings and distances are reported to the nearest second and 0.01 foot.

The lottings and areas are as shown on the plat approved February 15, 1864 and January 7, 1884.

The survey was executed by Bryan S. Seibold, Cadastral Surveyor, beginning June 2, 2003, and completed May 18, 2004, pursuant to Special Instructions dated April 29, 2003, under Group Number 2060, Oregon.

Timber in this area consists of fir, tamarack, and pine.

LEGEND	
◇	Original corner previously remonumented
◆	Original corner remonumented this survey
□	Corner previously restored, established or reestablished
●	Corner established or reestablished this survey

UNITED STATES DEPARTMENT OF THE INTERIOR
BUREAU OF LAND MANAGEMENT

Portland, Oregon December 17, 2004

This plat is strictly conformable to the approved field notes, and the survey, having been correctly executed in accordance with the requirements of law and the regulations of this Bureau, is hereby accepted.

For the Director

Mary J. M. Hartzel

Chief Cadastral Surveyor of Oregon

NOTE:

This map was found on the BLM website while researching the information for a survey of adjacent ownership. This survey is dated 2004, but is indexed this year, carrying the designation of survey number 018-2011. Associated field notes are currently being indexed into the Union County Monumentation records.

UNION COUNTY SURVEYOR	
Date Received	6/12/2011
Date Filed	6/22/11
By	R. ROBINSON, DEARY
File No.	018-2011

SURVEY NUMBER 018-2011