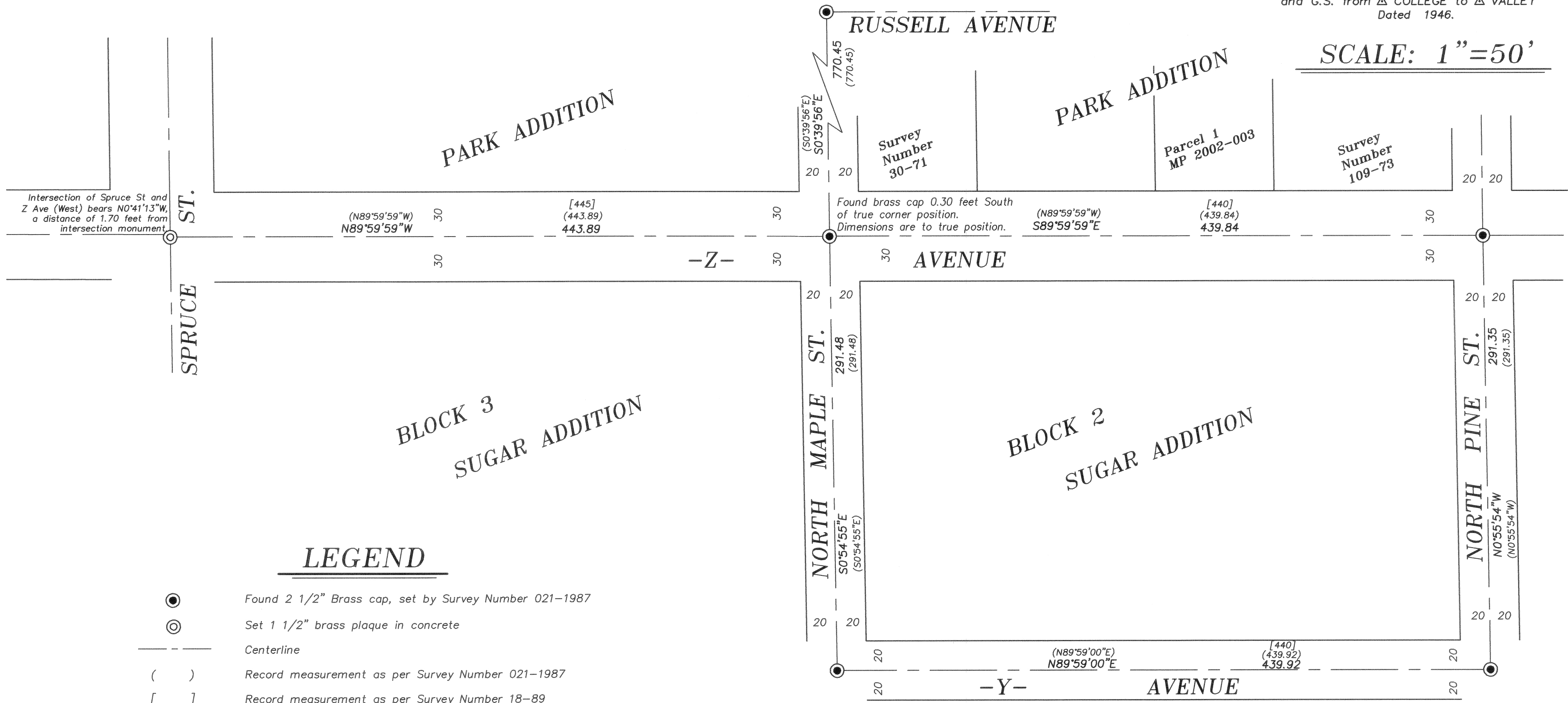


# BASIS OF BEARING

Forward bearing as published by the U.S.C. and G.S. from  $\Delta$  COLLEGE to  $\Delta$  VALLEY Dated 1946.

SCALE: 1" = 50'



## LEGEND

- Found 2 1/2" Brass cap, set by Survey Number 021-1987
- Set 1 1/2" brass plaque in concrete
- Centerline
- Record measurement as per Survey Number 021-1987
- Record measurement as per Survey Number 18-89

## REFERENCE MATERIAL

Survey Number 18-89  
 Survey Number 021-1997  
 Minor Partition Number 20070005T

## NARRATIVE

This survey was done at the request of Norman Paullus, on behalf of the City of La Grande. Mr. Paullus wanted the centerline monument at the intersection of Spruce St. and 'Z' Avenue East reset. The monument was originally set by McLain in the 1922 monumentation of La Grande (Survey 18-89). There are two intersection positions for Z Ave. and Spruce St. 1.7 feet apart from each other. The South position pertains to Z Ave. as it runs East and the North position pertains to the West. It was replaced in Survey 021-1997, where it was replaced by a copperclad iron rod monument in a water valve box. In Minor Partition 20070005T, it was discovered that the monument had been removed. I base this survey on Survey Number 021-1997. The location of the monument set by Survey 021-1997 was supposedly the South intersection monument, although it appears that the water valve box occupies the North location. I located the monuments as shown hereon. All monuments are harmonious with the 1997 survey with the exception of the monument at the intersection of Maple and Z Street. I call this out of position as noted. The water valve box has been paved over. I replace the intersection monument at the South position. I find no other unusual conditions with this survey.

REGISTERED  
 PROFESSIONAL  
 LAND SURVEYOR

OREGON  
 JUNE 2, 2010  
 JEFFREY S. HSU  
 83571

Renewal Date: June 30, 2011

UNION COUNTY  
 SURVEYOR

Date Received 3/31/11

Date Filed 3/31/11

By R. ROBINSON, Deputy

File No. 006-2011

**BAGETT, GRIFFITH & BLACKMAN**  
 2006 Adams Avenue, LaGrande, Oregon  
 Map of Survey

Remonumentation of intersection of Spruce St. and Z Avenue (East), City of La Grande

UNION COUNTY, OREGON

SURVEYED FOR City of La Grande

SURVEYED BY J. S. H.

Scale: 1" = 50' Drawn by: J. S. H. Jan.-Mar 2011

SURVEY NUMBER 006-2011