

BASIS OF BEARING

Solar observation taken at the North quarter corner of Section 15, Township 1 North, Range 39 East of the Willamette Meridian.

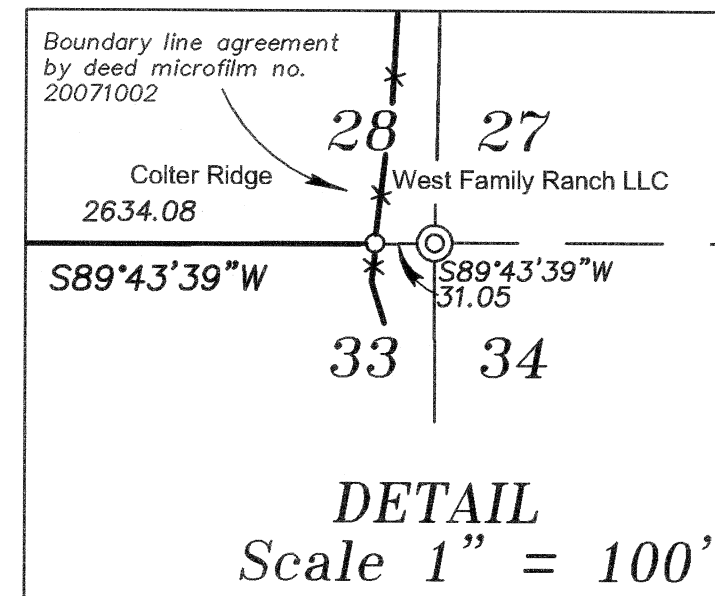
SCALE: 1" = 500'

REFERENCE MATERIAL

GLO Contract Number 120 by Joseph G. Gray
 Union County Monumentation Records
 Old Book of Surveys Page 191
 Old Book of Surveys Page 263
 Survey Number 111-78
 Survey Number 31-89
 Survey Number 033-2004
 Minor Partition Plat Number 20090011T
 Deed Microfilm Number 20071002

LEGEND

- Found 2 1/2" aluminum cap on 2 1/2" aluminum pipe set by Survey Number 033-2004 unless otherwise noted
- ⊙ Found 2 1/2" aluminum cap on 5/8" iron pin set by Survey Number 033-2004
- ⊙ Set 2 1/2"x30" aluminum monument (see monumentation record filed separately)
- Set 5/8"x30" iron pin with plastic cap marked "BGB SURVEY MARKER"
- Set steel fence post on parcel line
- () Record information of GLO Contract Number 120
- [] Record information of Survey Number 111-78
- [[]] Record information of Survey Number 91, recorded in Old Book of Surveys, Page 191
- { } Record information of Survey Number 118, recorded in Old Book of Surveys, Page 263
- x— Existing fence line
- SFNF Corner searched for but not found
- +++++ Centerline of Railroad



NARRATIVE

This survey was done at the request of Steve McClelland of Colter Ridge Properties, Inc. The purpose of this survey was to delineate the common boundary of Parcels 1 and 2 of Minor Partition Plat Number 20090011T and the South boundary of the two parcels. The boundary lines are along the South line of Section 28, and along the North-South centerline of the section. The North and West lines of the section were located by previous surveys as shown. A search was made for the 1/4 and section corners required for the location of the lines, but no original GLO evidence could be found. At the location of the Southeast corner of Section 28, there is a North-South rock wall constructed in the area of the corner. I ran a line from the wall East to the railroad and find the distance to be harmonious with the distance called for on survey number 118, recorded in the Old Book of Surveys on page 263 by J.L. Curtis, Union County Surveyor. I therefore accept the East-West position of the wall and place the corner monument at a proportionate North-South position from the found corners North and South of this corner. I then place the remaining 1/4 corners by standard proportion. I did not monument the East 1/4 corner of Section 28, as it marks no ownership. The monument set at the Southeast corner of Section 28 controls the position of the desired lines and I set a monument for the Section corner. The true property corner falls 31.05 feet West of the Section corner, in a fence line that is the basis for the boundary agreement filed as Microfilm Number 20071002 in the deed records of Union County. Having established the corners required for the location requested by Mr. McClelland, I then set steel fence posts along the lines at approximately 250 ft. intervals. I find no other unusual conditions on this survey.

REGISTERED
PROFESSIONAL
LAND SURVEYOR

OREGON
JULY 17, 1986
RICK G. ROBINSON
2219

Renewal Date: Dec. 31, 2010

UNION COUNTY
SURVEYOR

Date Received 9/1/10

Date Filed 9/1/10

By R.G.R.

File No. 021-2010

BAGETT, GRIFFITH & BLACKMAN

2006 Adams Avenue, LaGrande, Oregon
Map of Survey

Location of Interior lines of Minor Partition Plat Number 20090011T within Section 28, Township 1 North, Range 39 East of the Willamette Meridian

UNION COUNTY, OREGON

SURVEYED FOR Colter Ridge Properties, Inc.

SURVEYED BY R.G.R. 8/10

Scale: 1" = 500' Drawn by: R.G.R. 8/10

SURVEY NUMBER 021-2010