

BASIS OF BEARING

Forward bearing as published by the U.S.C. and G.S. from Δ COLLEGE to Δ VALLEY Dated 1946.

SCALE: 1" = 30'

LEGEND

- ⊙ Found 2 1/2" brass cap monument set as the Initial Point Grande Ronde Medical Center Condominium
- Found 5/8" iron pin with plastic cap marked "BGA SURVEY MARKER" as per survey number 038-1994
- ⊕ Found 1/2" iron pin set by the plat of Grande Ronde Medical Center
- Found 5/8" iron pin set by Survey Number 048-1998
- Set 5/8" x 30" iron pin with yellow plastic cap marked BGB SURVEY MARKER
- Easement Line
- - - Centerline

REFERENCE MATERIAL

Plat of Grande Ronde Medical Center
Plat of Grande Ronde Medical Condominium
Survey Number 038-1994
Survey Number 048-1998

DEED REFERENCES
Microfilm Document Number 20064275
Microfilm Document Number 69698

REGISTERED
PROFESSIONAL
LAND SURVEYOR

OREGON
JULY 17, 1986
RICK G. ROBINSON
2219

Renewal Date: Dec. 31, 2010

UNION COUNTY
SURVEYOR

Date Received 2/19/10

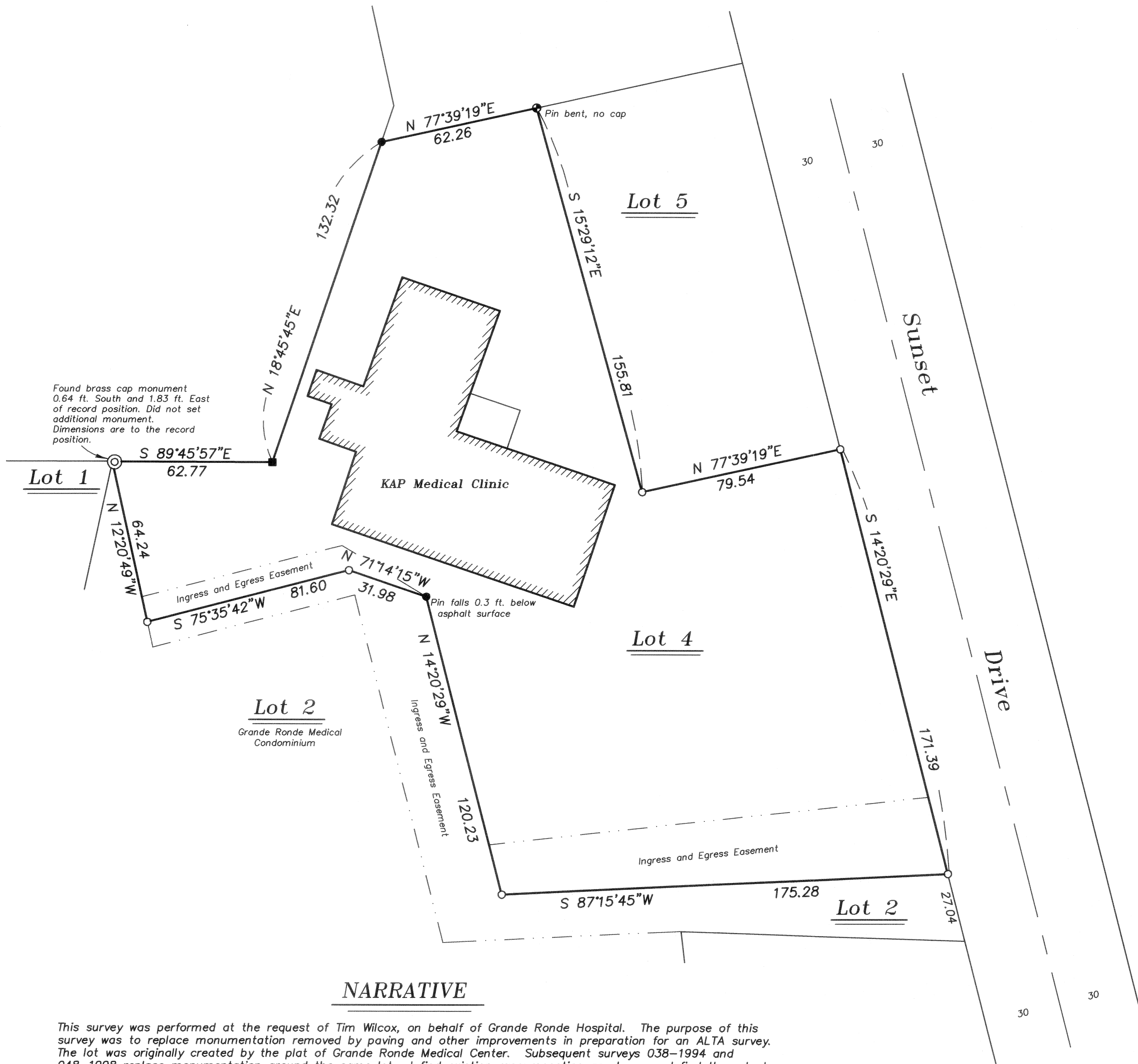
Date Filed 2/19/10

By: *[Signature]*

File No. 004-2010

NARRATIVE

This survey was performed at the request of Tim Wilcox, on behalf of Grande Ronde Hospital. The purpose of this survey was to replace monumentation removed by paving and other improvements in preparation for an ALTA survey. The lot was originally created by the plat of Grande Ronde Medical Center. Subsequent surveys 038-1994 and 048-1998 replace monumentation around the same lot. I find existing monumentation as shown and find them to be harmonious with the plat of Grande Ronde Medical Center. I replace missing monuments at record bearing and distance as per said plat. I find no other unusual conditions with this survey.



BAGETT, GRIFFITH & BLACKMAN

2006 Adams Avenue, LaGrande, Oregon

Map of Survey

Lot 4 of Grande Ronde Medical Center
City of La Grande

UNION COUNTY, OREGON

SURVEYED FOR Tim Wilcox

SURVEYED BY R. G. R.

Scale: 1" = 30'

Drawn by: J. S. H.

02/10

SURVEY NUMBER 004-2010