

BASIS OF BEARING

Forward bearing as published by the U.S.C. and G.S. from Δ COLLEGE to Δ VALLEY Dated 1946.

SCALE: 1"=100'

REFERENCE MATERIAL

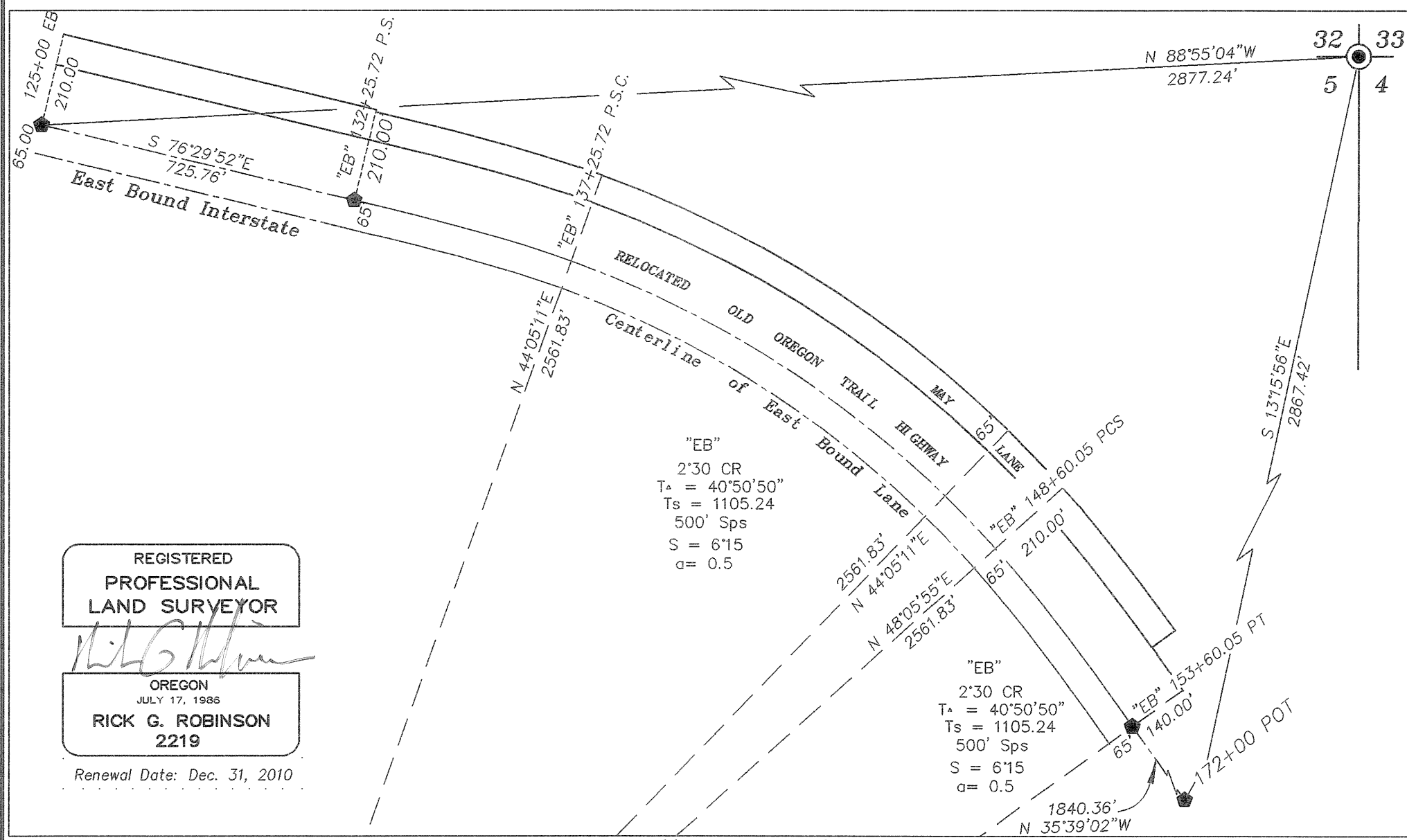
SURVEY REFERENCES	DEED REFERENCES
Union County Monumentation Records	Volume 103 Page 446
Plat of Park Addition	Volume 103 Page 447
Plat of Copcopi Subdivision	Volume 103 Page 448
ODOT Drawing Number 88-36-3	Volume 103 Page 449
Survey Number 2-73	Volume 114 Page 233
Survey Number 63-80	Volume 119 Page 536
Survey Number 40-83	Microfilm Number 20024465
Minor Partition Plat Number 200800107	Microfilm Number 20071128

LEGEND

- Found monument as per Union County Monumentation Records
- ◆ Found brass plaque in catch basin set by ODOT drawing 88-36-3
- ◆ Found 5/8" iron pin with aluminum cap marked "OSHD" set by ODOT drawing 88-36-3
- ⊕ Found 5/8" iron pin set by survey number 2-73
- Found 5/8" iron pin with plastic cap marked "APA" set by survey number 40-83
- Found 5/8" iron pin with plastic cap marked "BGB SURVEY MARKER" set by Minor Partition Plat Number 2008-00107
- Set 5/8"x30" iron pin with plastic cap marked "BGB SURVEY MARKER"
- () Record information of deed microfilm Number 20024465
- { } Record information of survey number 40-83
- [] Record information of survey number 63-80
- Centerline

NARRATIVE

This survey was done at the request of Kent Coppinger, representing the Lovely Estate. The purpose of this survey is to adjust that portion of the City of La Grande ownership which lays across the Lovely Estate Tract, to the Estate, and adjust an equal area of the West end of the Lovely Estate back to the City of La Grande. I base the location of May Lane on ODOT drawing 88-36-3. I base the location of Park Addition on survey number 63-80. I found the monumentation as shown. Survey Number 2-73 was performed prior to survey number 63-80, which amended the placement of Park Addition. I find the monuments set by survey number 40-83 and Copcopi Subdivision to fit the amended location. I place the location of the City of La Grande Tract (40 ft. strip) by record deed, coming South from the Section corner and forcing the calls West and North to the Westerly terminus. There is a discrepancy in the deed calls for the West end. This location is harmonious with the physical ditch. I place the West end of the Lovely estate tract prior to adjustment at a point 100 feet East and parallel to the West line of Tract A of Park Addition as per deed call. I place the lines of the City of La Grande Tract (North and West of the Lovely Estate tract) at record deed calls, being the center of the former irrigation ditch and the 80x120 ft. tract coming out of Tract B of Park Addition. The Northeast corner of the Davidson Tract is not in common with the Northwest corner of the Williams Tract. The Davidson tract was transferred on the basis of the midpoint of Tract B, and the Williams Tract was set at a particular distance (253.50 ft.) and monumented as such by survey number 40-83. I have prepared the necessary legal descriptions for the adjustment of these tracts. I find no unusual conditions on this survey.



SCALE: 1"=300'

REGISTERED PROFESSIONAL LAND SURVEYOR
 OREGON JULY 17, 1986
 RICK G. ROBINSON
 2219
 Renewal Date: Dec. 31, 2010

UNION COUNTY SURVEYOR
 Date Received 6/4/09
 Date Filed 6/12/09
 By Amy T. Blum
 File No. 008-2009

BAGETT, GRIFFITH & BLACKMAN
 2006 Adams Avenue, LaGrande, Oregon
 Map of Survey
 Lot Line Adjustment of ownership situated in Lot 1 and Tracts A, B and C of Park Addition to La Grande
 UNION COUNTY, OREGON

SURVEYED FOR	Lovely Estate/City of La Grande	
SURVEYED BY	R.G.R.	4/09
Scale: As Shown	Drawn by: R.G.R.	4/09