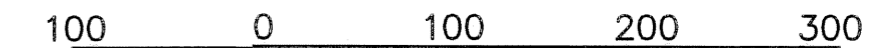


BASIS OF BEARINGS

N14°30'02"E BETWEEN A FOUND MONUMENT AT THE SOUTHWEST CORNER OF PARCEL 2-PARTITION PLAT 1997-10, AND A FOUND MONUMENT AT THE INTERSECTION OF THE SOUTH LINE OF ALICEL LANE AND THE EAST LINE OF THE OWR&N RAILROAD RIGHT OF WAY, AS SHOWN OF UNION COUNTY PARTITION PLAT 1997-10.



SURVEY NARRATIVE

THIS SURVEY WAS PERFORMED AT THE REQUEST OF PENDLETON GRAIN GROWERS, INC. (PGG) FOR THE PURPOSE OF ADJUSTING THE BOUNDARY BETWEEN THE EXISTING PGG PARCEL AND PARCEL 2 OF PARTITION PLAT 1997-10. PARCEL 2 OF PARTITION PLAT 1997-10 IS CURRENTLY OWNED BY SEVERAL MEMBERS OF THE PEACOCK FAMILY. PGG INTENDS TO ACQUIRE A PORTION OF THIS PARCEL 2 TO ACCOMMODATE THE EXPANSION OF THEIR ALICEL GRAIN STORAGE AND SHIPPING FACILITY. THE INITIAL FIELD SURVEY FOR THIS LOT LINE ADJUSTMENT WAS PERFORMED ON SEPTEMBER 17, 2008, AND ALL SURVEY MONUMENTS SHOWN AS FOUND ON THIS MAP WERE VISITED ON THAT DATE. THESE FOUND MONUMENTS WERE DETERMINED TO OCCUPY THEIR RESPECTIVE RECORD POSITIONS AS INDICATED ON THE VARIOUS SURVEYS AND PARTITION PLATS EXISTING IN THE AREA. ALL DIMENSIONS SHOWN ON THIS MAP BETWEEN FOUND MONUMENTS ARE IDENTICAL TO THE DIMENSIONS GIVEN ON UNION COUNTY PARTITION PLAT NO. 1997-10 OR OTHER DOCUMENTS AS CITED.

REFERENCE MATERIAL

UNION COUNTY PARTITION PLAT 1997-10
 UNION COUNTY PARTITION PLAT 1999-19
 UNION COUNTY PARTITION PLAT 2000-17
 UNION COUNTY PARTITION PLAT 2008-006

UNION COUNTY SURVEY 16-86,
 UNION COUNTY SURVEY 041-2008 (UPRR
 ADJUSTMENT SURVEY)

UNION COUNTY DEED INSTRUMENT # 993566
 UNION COUNTY DEED INSTRUMENT # 20025923
 UNION COUNTY DEED INSTRUMENT # 20041331
 UNION COUNTY PLANNING DEPT. APPROVAL, DOC.
 NO. 20084940T.

RIGHT-OF-WAY AND TRACK MAP,
 OREGON-WASHINGTON RAILROAD & NAVIGATION
 CO., BRANCH LINE-LA GRANDE TO JOSEPH, DATED
 JUNE 30, 1916

LEGEND

- INDICATES SET 5/8 INCH IRON ROD, 30 INCHES LONG WITH 1/2" DIA. ALUMINUM CAP STAMPED "APA WA41295 OR2849"
- ⊕ INDICATES FOUND 5/8" IRON ROD WITH PLASTIC CAP MKD. "BGB SURVEY MARKER", AS DESCRIBED ON MAJOR LAND PARTITION 1997-10, AND MINOR LAND PARTITION 1999-19.
- ⊞ INDICATES FOUND 5/8" IRON ROD WITH PLASTIC CAP MKD. "APA", AS DESCRIBED ON MINOR LAND PARTITION 2000-17
- △ INDICATES FOUND 5/8 INCH IRON ROD, 30 INCHES LONG WITH 1/2" DIA. ALUMINUM CAP STAMPED "APA WA41295 OR2849", SEE SURVEY 041-2008
- (XXX.XX) INDICATES RECORD DIMENSION PER CITED DOCUMENT
- ((XXX.XX)) INDICATES RECORD DIMENSION PER DEED NO. 20055923
- — — — — INDICATES PROPOSED BOUNDARY ADJUSTMENT LINE
- — — — — INDICATES EXISTING PARTITION PARCEL BOUNDARY LINE
- — — — — INDICATES EXISTING RAILROAD ROAD RIGHT OF WAY
- ▨ INDICATES AREA OF ADJUSTMENT

UNION COUNTY SURVEYOR	
Date Received	11/14/08
Date Filed	11/14/08
By	R. Robinson, Dmv
File No.	042-2008

FILE: R:\P66\656-17_ALICEL_08\DWG\ALICEL PEACOCK-LLA.DWG

MAP OF SURVEY LOT LINE ADJUSTMENT

LOCATED IN THE NW1/4 OF THE SE1/4, SECTION 7 TOWNSHIP 2 SOUTH, RANGE 39 EAST, W.M. UNION COUNTY, OREGON

FOR: PENDLETON GRAIN GROWERS, INC.		P.O. BOX 1248 PENDLETON, OR. 97801	
SCALE:	1" = 100'		1/1
DATE:	NOV., 2008		
JOB NO.	656-17 (100)		

REGISTERED PROFESSIONAL LAND SURVEYOR

Michael B. Posada
 OREGON
 JAN. 20, 1998
 MICHAEL B. POSADA
 02849 LS
 RENEWS 12/31/08

DATED: 11-14-08

SURVEY FOR LOT LINE ADJUSTMENT

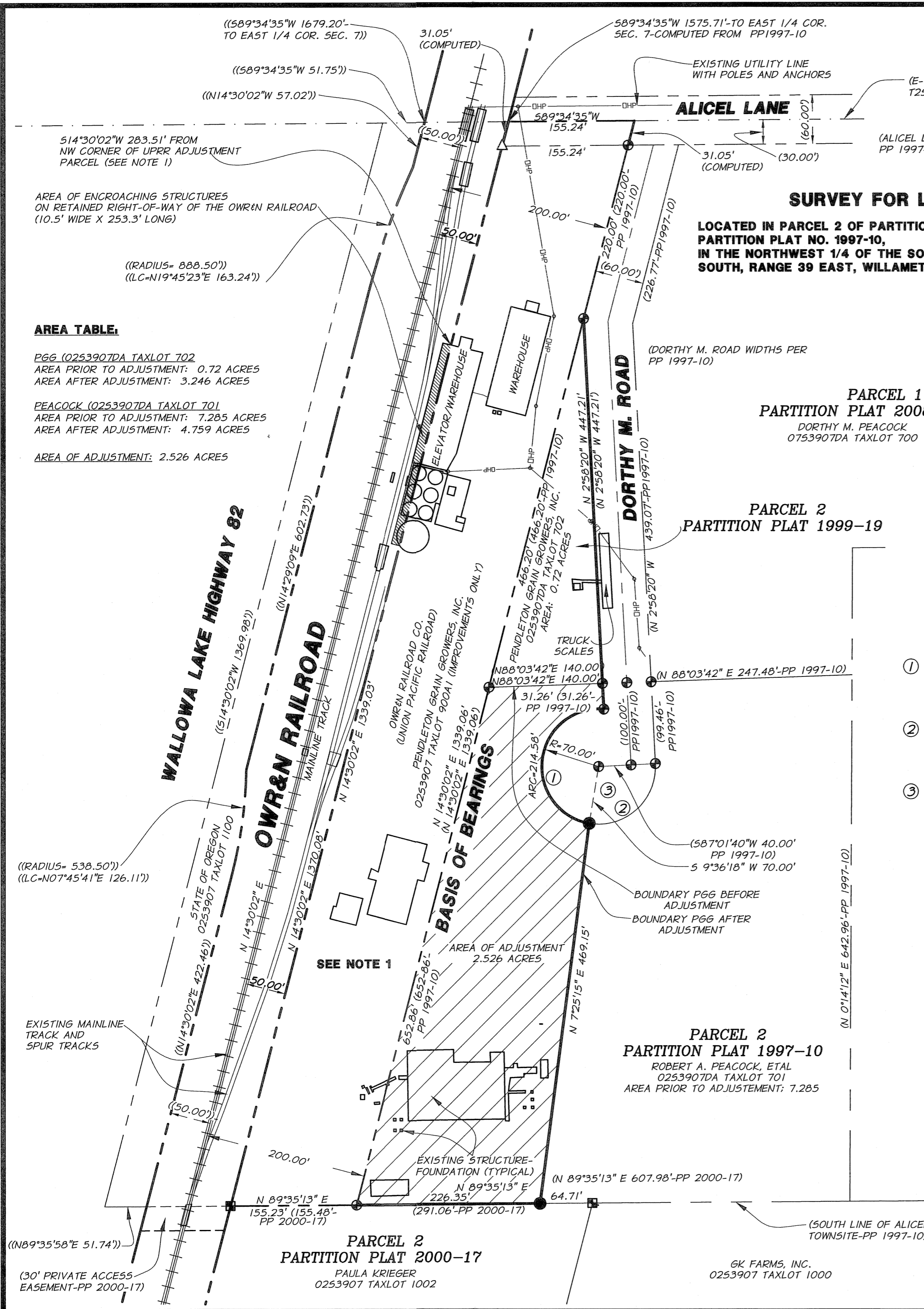
LOCATED IN PARCEL 2 OF PARTITION PLAT NO. 1999-19, AND IN A PARCEL 2 OF PARTITION PLAT NO. 1997-10, IN THE NORTHWEST 1/4 OF THE SOUTHEAST 1/4 OF SECTION 7, TOWNSHIP 2 SOUTH, RANGE 39 EAST, WILLAMETTE MERIDIAN, UNION COUNTY, OREGON

PARCEL 1
 PARTITION PLAT 2008-006
 DORTHY M. PEACOCK
 0753907DA TAXLOT 700

PARCEL 2
 PARTITION PLAT 1999-19

PARCEL 2
 PARTITION PLAT 1997-10
 ROBERT A. PEACOCK, ETAL
 0253907DA TAXLOT 701
 AREA PRIOR TO ADJUSTMENT: 7.285

PARCEL 2
 PARTITION PLAT 2000-17
 PAULA KRIEGER
 0253907 TAXLOT 1002



NOTE 1:
 CONCURRENTLY WITH THIS ADJUSTMENT OF THE LOT LINE BETWEEN PARCEL 2-PP 1999-19 (PGG) AND PARCEL 2-PP 1997-10 (PEACOCK), THE BOUNDARY BETWEEN PARCEL 2-PP 1999-19 (PGG) AND THE UPRR IS BEING ADJUSTED, RESULTING IN THE EASTERLY 150' OF THE UPRR RIGHT-OF-WAY BEING ACQUIRED BY PGG.

- CURVE DATA**
- ① DELTA: 175°38'03"
 RADIUS: 70.00'
 ARC LENGTH: 214.58'
 LONG CHORD: N7°25'15"E 139.90'
 - ② DELTA: 102°34'43"
 RADIUS: 70.00'
 ARC LENGTH: 125.32'
 LONG CHORD: N48°18'59"E 109.24'
 - ③ DELTA: 278°12'46"
 RADIUS: 70.00'
 ARC LENGTH: 339.90'
 LONG CHORD: N43°51'56"W 91.65'
 (DELTA: 278°12'46"-PP 1997-10)
 (RADIUS: 70.00'-PP 1997-10)
 (ARC LENGTH: 339.90'-PP 1997-10)
 (LONG CHORD: N43°51'56"W 91.65-PP 1997-10)

AREA TABLE:

PGG (0253907DA TAXLOT 702)
 AREA PRIOR TO ADJUSTMENT: 0.72 ACRES
 AREA AFTER ADJUSTMENT: 3.246 ACRES

PEACOCK (0253907DA TAXLOT 701)
 AREA PRIOR TO ADJUSTMENT: 7.285 ACRES
 AREA AFTER ADJUSTMENT: 4.759 ACRES

AREA OF ADJUSTMENT: 2.526 ACRES

SEE NOTE 1

BASIS OF BEARINGS

AREA OF ADJUSTMENT
 2.526 ACRES

GK FARMS, INC.
 0253907 TAXLOT 1000