

# LOT LINE ADJUSTMENT OF LOTS 3 AND 4 OF LA GRANDE/ UNION COUNTY AIRPORT COMMERCIAL/INDUSTRIAL PARK EAST

## BASIS OF BEARING

The West line of Lot 3 being N 0°02'29" E

**SCALE: 1" = 50'**

## LEGEND

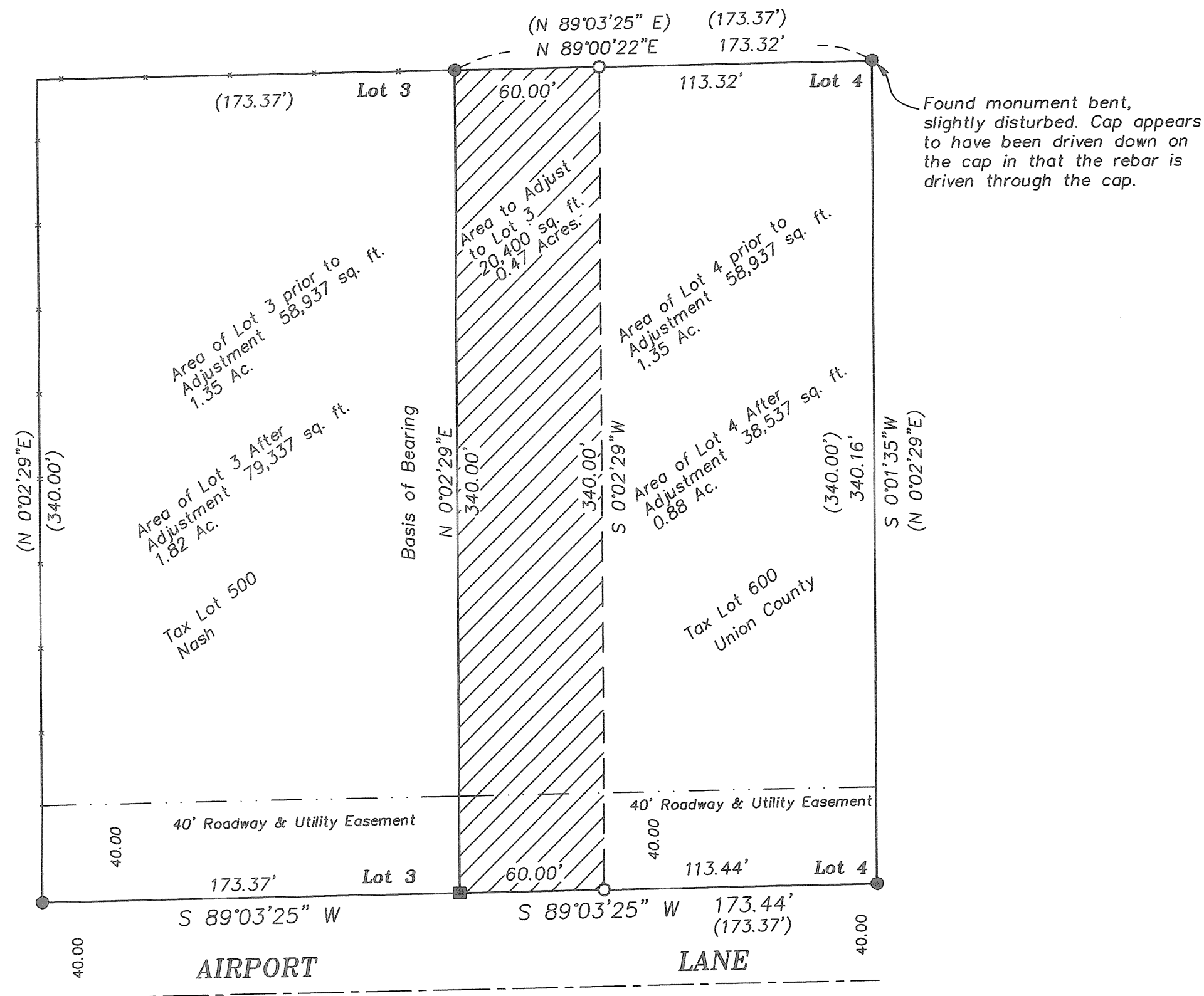
- Found 5/8" iron pin with plastic cap marked AP&A" set by Plat of La Grande/Union County Airport Commercial/Industrial Park East Subdivision
- Found 5/8" iron pin with no cap, set by Plat of La Grande/Union County Airport Commercial/Industrial Park East Subdivision
- Set 5/8"x30" iron pin with plastic cap marked "BGB SURVEY MARKER"
- Roadway and Utility easement
- Centerline of Street
- x-x- Existing Cyclone Fence
- ▨ Area to be adjusted to Lot 3

## REFERENCE MATERIAL

Plat of LA GRANDE/UNION COUNTY AIRPORT  
COMMERCIAL/INDUSTRIAL PARK EAST  
MF 20042054 MF 20083658  
MF 20084608T

## NARRATIVE

This survey was ordered by Ron Nash on behalf of the Nash Family LLC and Union County. Mr. Nash and the county each owned Lot 3 and Lot 4 respectively, and wished to adjust the West 60.00 feet of Lot 4 to Lot 3. I find the Southwest corner of said Lot 3, and the four corners of said Lot 4 in place, and use the corners to adjust the lots. I find that the Northeast corner of said Lot 4 appears to have been bent, and find that its position differs slightly from the record. I occupied the Southwest corner of Lot 4 and sited the Southeast corner of Lot 4, and place a monument 60.00 feet East from said Southwest Corner. I then occupy the Northwest Corner of Lot 4, and site the found Northeast corner and place a monument 60.00 feet East from said Northwest corner. I find no encroachments or unusual conditions on this survey.



**UNION COUNTY  
SURVEYOR**  
Date Received 10/27/08  
Date Filed 10/27/08  
By R. [Signature] Deany  
File No. 038-2008

REGISTERED  
**PROFESSIONAL  
LAND SURVEYOR**  
[Signature]  
OREGON  
JULY 13, 1973  
**GREGORY T. BLACKMAN**  
991  
Renewal Date: Dec. 31, 2009

**BAGETT, GRIFFITH & BLACKMAN**  
2006 Adams Avenue, LaGrande, Oregon  
Map of Survey  
Lot Line Adjustment of Lots 3 and 4 of La Grande/  
Union County Airport Commercial/Industrial Park East  
Situate in the Southeast Quarter of Section 24,  
Township 3 South, Range 38 East of the  
Willamette Meridian.  
Union County, Oregon

|                    |                 |  |          |
|--------------------|-----------------|--|----------|
| SURVEYED FOR       | Nash Family LLC |  |          |
| SURVEYED BY        | GTB             |  | 8/8/08   |
| Scale: 1" = 50 FT. | Drawn by: GTB   |  | 10/17/08 |

Survey Number 038-2008