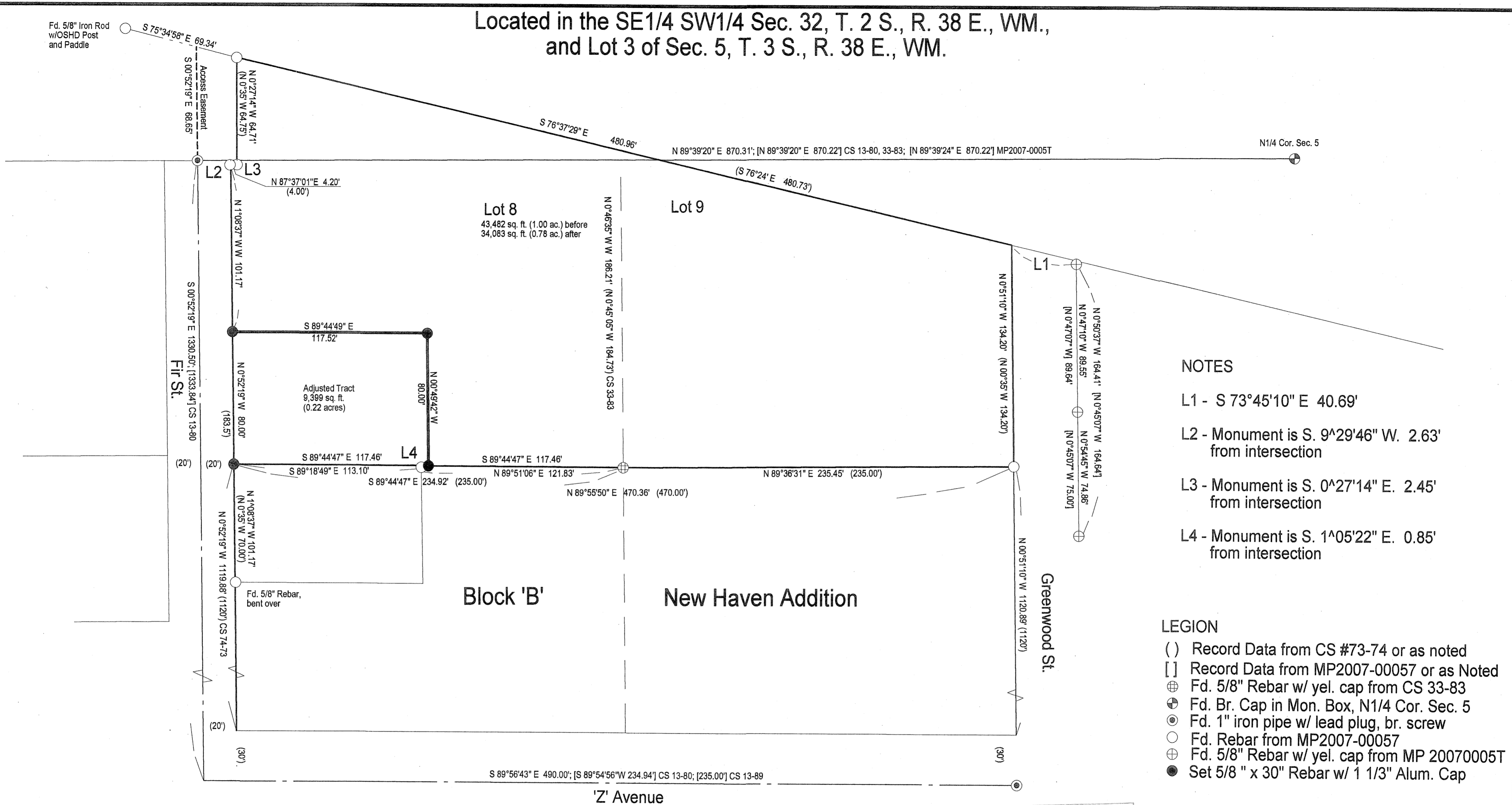


Located in the SE1/4 SW1/4 Sec. 32, T. 2 S., R. 38 E., WM.,
and Lot 3 of Sec. 5, T. 3 S., R. 38 E., WM.



NOTES

- L1 - S 73°45'10" E 40.69'
- L2 - Monument is S. 9°29'46" W. 2.63' from intersection
- L3 - Monument is S. 0°27'14" E. 2.45' from intersection
- L4 - Monument is S. 1°05'22" E. 0.85' from intersection

LEGION

- () Record Data from CS #73-74 or as noted
- [] Record Data from MP2007-00057 or as Noted
- ⊕ Fd. 5/8" Rebar w/ yel. cap from CS 33-83
- ⊙ Fd. Br. Cap in Mon. Box, N1/4 Cor. Sec. 5
- Fd. 1" iron pipe w/ lead plug, br. screw
- Fd. Rebar from MP2007-00057
- ⊕ Fd. 5/8" Rebar w/ yel. cap from MP 20070005T
- Set 5/8" x 30" Rebar w/ 1 1/3" Alum. Cap

NARRATIVE

This survey was performed to create a lot in the Southwest corner of lot 8 of Block 'B' of the New Haven Addition to La Grande. North Fir Street was established from using a found center line monument at the Northerly end of Fir Street and from record distances from a centerline Monument found at the intersection of Greenwood and 'Z' Avenue. This survey accepts the position of a monument from CS 33-83 which established the Southeast corner of lot 8. The Southwest corner of lot 8 was reestablished using proportionate distances from the original plat.

APPROVAL

Approved as a Lot Line Adjustment this 7TH day of October, 2008.

Michael J. Boquist
Michael J. Boquist
La Grande City Planner

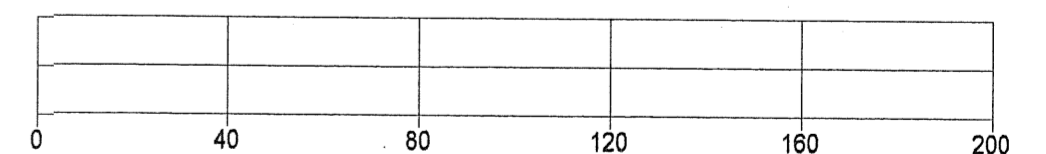


UNION COUNTY SURVEYOR
Date Received 10/1/08
Date Filed 10/7/08
By R. ROUSON, DEPUTY
F.S. No. 035-2008

REGISTERED PROFESSIONAL LAND SURVEYOR
Robert E. Butler
OREGON
JULY 25, 1985
ROBERT E. BUTLER
22.3

Expires 12/31/09

Scale 1" = 40'



BASIS OF BEARING:
N 89°36'20" E from Street Mon. at Northerly end of Fir St and N1/4 Cor. of Sec. 5

Survey for Henry Manjarres
Lot Line Adjustment and Location of
Lot 8 Block B, New Haven Addition
to the City of La Grande,
Union County, Oregon

Surveyed By:
Robert E. Butler
2904 Spruce Street
La Grande, Oregon 97850

Date:
From March 14, 2008
to Oct. 6, 2008

SURVEY NUMBER 035-2008