

NARRATIVE

This survey was done at the request of Ellen Hector, in conjunction with Tony Boyd and Judy Hector. The purpose was to monument the exteriors of their boundaries. The Hector's properties were lot and block descriptions based on Mountain View Fourth Addition, surveyed by James Voelz. The North line of Mountain View Fourth Addition is coincident with the North line of the Northeast quarter of the Southwest quarter. A railroad tie fence corner has been accepted by past surveys as representing the Center-West 1/16th corner of Section 3 (Survey No. 4-69, 1-73, 5-71, 62-71, 72-71, 21-76, MP 20070013T). The center of section has had a history of discrepancy as was shown in Survey Number 67-73 and 027-2001. The center 1/4 as positioned by Voelz was retraced by Greg Blackman in Survey Number 40-84, where he positions it by ties to pins found in Survey 39-69. Lines of possession along McAlister frontage show this position to be harmonious with deed calls. McAlister Road right of way was positioned as per Survey Number 041-2002.

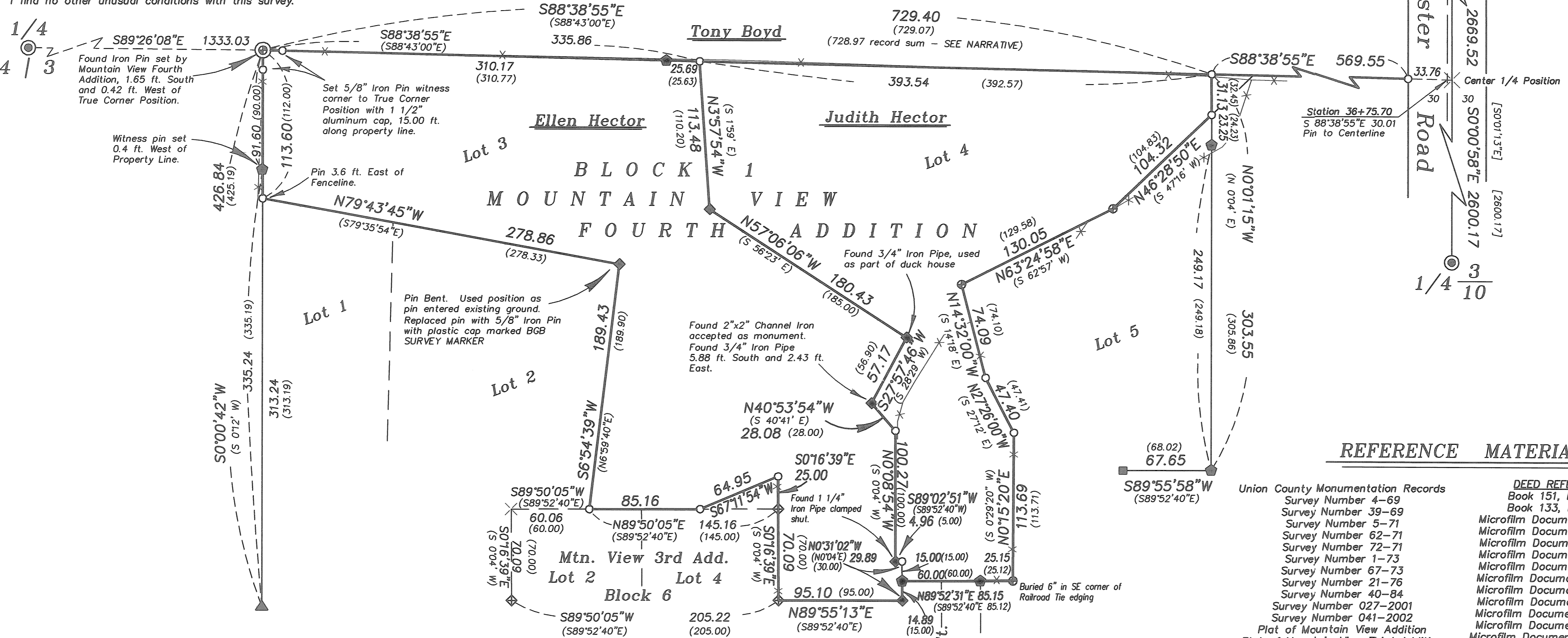
The monuments of Mountain View 4th addition were recovered as shown. Positions as found on the ground were held. Though the iron pin set alongside the railroad tie fence corner was done by this subdivision, the fence corner has been long held as the sixteenth corner and was thus held as the true Northwest corner of the subdivision. There is an ambiguity along the North line of the platted subdivision as the sum of the distances do not add up to the total. Running closures on platted bearings and distances show the sum on the segments to be the original intent. The Northeast corner of Lot 4 was determined by driving a line between the Iron pin found at the Southeast corner of Lot 5 and the witness corner North to the Center-Section line. From this the true corner point on the North line between Lots 3 and 4 was proportioned between the witness corner and the NE corner of Lot 4. The West line of Lot 3 was determined by holding the line between the 1/16 corner fence corner and the Initial Point brass cap of Mountain View 4th Addition. The distance between the brass cap and the witness corner were harmonious with the platted distance. Excess was thrown to the North. The true point along the West line of Lot 3 was determined by record distance from the witness corner. The Northeast corner of Lot 2 was found bent, and was replaced with a new pin. No pins were found along the North line of Lots 2 and 4, of Block 6, Mtn. View 3rd addition, but the pin marking the Southeast corner of Lot 2, of Mountain View 4th Addition was found. The bearing and distance between the said pin and the pin found at the SE corner of Lot 3 was held. This line was used to position the Northeast corner of Lot 2, Block 6, Mtn. View 3rd Addition by running a line parallel from the found pin marking the NE corner of Lot 4, Mountain View 3rd Addition. From this proportionate measurement was used to place the South corner between Lots 2 and 3 of Mountain View 4th Addition. Monuments along "D" Street were recovered in position. To replace the monument between Lots 3 and 4 just North of "D" Street, the line between monuments along the West line of "D" Street were projected record distance. Doing so is harmonious with the monument to the West of replaced monument. The lost corners of Lot 4 were replaced by rotating record dimensions of Mountain View 4th Addition to my basis of bearings and proportionately adjusting distances between found monuments. The monuments along the East line of Lot 5 were found to be harmonious with platted distances. The true corner point marking the Northeast corner of Lot 5 was computed by proportionate measurement between the witness corner and the Northeast corner of Lot 4.

The triangular piece of land along the Northeast corner of Lot 4, East of the platted lot, appears to be lost in the chain of title. Microfilm Document Number 39485, dated 7/18/1972, deeding the land to Lorence and Marilyn Savage, describes the land within Lot 4 as a metes and bounds description based on Voelz's previous surveys (62-71 and 72-71). However, when Voelz platted Mountain View Fourth Addition, he stops Lot 4 at the North/South running line as shown. The next deed in the chain, recorded October 28, 1976, describes the land by Lot and Block, and makes no mention of the said triangular piece. This is the same description it holds to the current deed (MF 132231, 995177, 20055902). The deed to the adjoining lot (MF 34828, MF 123513) does not include this triangular area. The North line of Block 1 was extended East to the Westerly right of way of McAlister Road, and a pin set at the intersection at the request of Tony Boyd, owner of the adjacent land to the North. I find no other unusual conditions with this survey.

BASIS OF BEARING

Forward bearing as published by the U.S.C. and G.S. from Δ COLLEGE to Δ VALLEY Dated 1946.

SCALE: 1" = 60'



REFERENCE MATERIAL

- | | |
|--|---|
| <p>Union County Monumentation Records</p> <ul style="list-style-type: none"> Survey Number 4-69 Survey Number 39-69 Survey Number 5-71 Survey Number 62-71 Survey Number 72-71 Survey Number 1-73 Survey Number 67-73 Survey Number 21-76 Survey Number 40-84 Survey Number 027-2001 Survey Number 041-2002 Plat of Mountain View Addition Plat of Mountain View Third Addition Plat of Mountain View Fourth Addition Minor Partition No. 20070013T | <p>DEED REFERENCES</p> <ul style="list-style-type: none"> Book 151, Page 605 Book 133, Page 235 Microfilm Document No. 34828 Microfilm Document No. 39485 Microfilm Document No. 57715 Microfilm Document No. 57872 Microfilm Document No. 58363 Microfilm Document No. 123513 Microfilm Document No. 123513 Microfilm Document No. 132231 Microfilm Document No. 984559 Microfilm Document No. 995177 Microfilm Document No. 20051505 Microfilm Document No. 20055902 Microfilm Document No. 20073894 |
|--|---|

LEGEND

- | | | |
|---|--|---|
| <ul style="list-style-type: none"> Found 2 1/2" Aluminum Cap marked as per Union County Monumentation Records Found Railroad Tie Fence corner, accepted as Center-West 1/16th corner Found 5/8" Iron Pin, unless otherwise noted, set by Survey 5-71 Found 5/8" Iron Pin, set by Mountain View Third Addition | <ul style="list-style-type: none"> Found 3/4" Iron Pipe, unless otherwise noted, set by Survey 62-71 or 72-71 Found 2 1/2" Brass Cap set as Initial Point of Mountain View 4th Addition Found 5/8" Iron Pin set by Mountain View 4th Addition Found 3/4" Iron Pipe set by Mountain View 1st Addition | <ul style="list-style-type: none"> Computed Position only Set 5/8" X 30" Iron Pin with yellow plastic cap marked BGB SURVEY MARKER Record Measurements as per Mountain View 4th Addition Record Measurements as per Survey Number 40-84 Existing Fenceline |
|---|--|---|

REGISTERED PROFESSIONAL LAND SURVEYOR

R. G. Robinson

OREGON JULY 17, 1986

RICK G. ROBINSON 2219

Renewal Date: Dec. 31, 2008

UNION COUNTY SURVEYOR

Date Received 3/18/08

Date Filed 3/18/08

By *J. S. H.*

File No. 008-2008

BAGETT, GRIFFITH & BLACKMAN

2006 Adams Avenue, LaGrande, Oregon

Map of Survey

Situated in Lots 3 and 4 of Block 1, Mountain View Fourth Addition to Island City, and the South Line of a Portion of the Southeast quarter of the Northwest quarter of Section 3, Township 3 South, Range 38 East of the Willamette Meridian

UNION COUNTY, OREGON

SURVEYED FOR	Ellen Hector, Tony Boyd, Judy Hector
SURVEYED BY	R. G. R. 12/07-3/08
Scale: 1" = 60'	Drawn by: J. S. H. 3/08

Survey Number 008-2008