

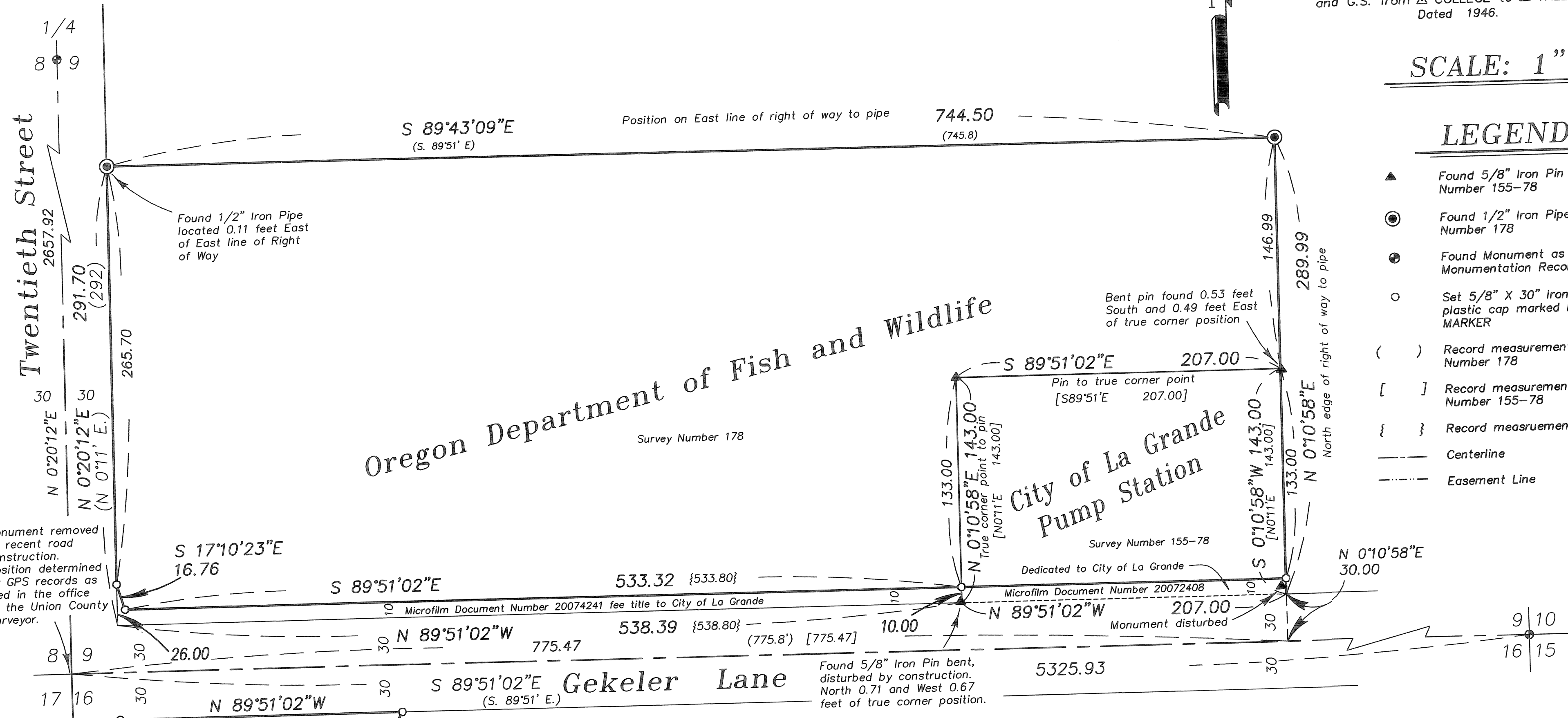
BASIS OF BEARING

Forward bearing as published by the U.S.C. and G.S. from Δ COLLEGE to Δ VALLEY Dated 1946.

SCALE: 1" = 50'

LEGEND

- ▲ Found 5/8" Iron Pin set by Survey Number 155-78
- Found 1/2" Iron Pipe set by Survey Number 178
- ⊕ Found Monument as per Union County Monumentation Records
- Set 5/8" X 30" Iron Pin with yellow plastic cap marked BGB SURVEY MARKER
- () Record measurements as per Survey Number 178
- [] Record measurements as per Survey Number 155-78
- { } Record measurements as per deed
- Centerline
- - - - Easement Line



NARRATIVE

This survey was done at the request of Norman Paullus on behalf of the City of La Grande and the Oregon State Department of Fish and Wildlife. Both Parties wanted the road dedication as described in Microfilm Document Number 20072408 and the land conveyed to the City of La Grande by Microfilm Number 20074241 monumented. Recent construction on Gekeler Lane had completely removed the Southwest corner of Section 9, as well as disturbed monuments along the right of way. The record geodetic position of the section corner, established by static GPS observations, as given in the Union County Monumentation records was used. Legal descriptions for the floodway easement South of Gekeler used Oregon North State Plane Coordinates as a basis of bearings. These were rotated to the observed basis of bearing and fit the rights of way well. The east lines of the properties North of Gekeler used record measurements from Survey Number 155-78. Although three of the monuments set by this survey were disturbed, this fit the undisturbed monument that was set in Survey 155-78 as well as the pipe at the Northeast corner set by Survey Number 178. The North line of the Fish and Wildlife tract held the position of the pipe at the Northeast corner and drove a line of the Fish and Wildlife tract to the East edge of the right of way. A 2" line through the found pipe at the Northwest corner to the East edge of the right of way. A 2" rotation West was given to bearings of the 155-78 survey to match the observed basis. I find no other unusual conditions with this survey.

REFERENCE MATERIAL

- Union County Monumentation Records Survey Number 178 Survey Number 155-78
- DEED REFERENCES Book 136, Page 568
- Microfilm Document Number 20072408
- Microfilm Document Number 20074241
- Microfilm Document Number 20074862

UNION COUNTY SURVEYOR

Date Received 12/26/07

Date Filed 12/26/07

By R. Robinson, Deputy

File No. 042-2007

REGISTERED PROFESSIONAL LAND SURVEYOR

GREGORY T. BLACKMAN 991

OREGON JULY 13, 1973

Renewal Date: Dec. 31, 2009

BAGETT, GRIFFITH & BLACKMAN
2006 Adams Avenue, LaGrande, Oregon

Map of Survey

Situate in the NW 1/4 of the NW 1/4 of Section 16 and the South 1/2 of the SW 1/4 of Section 9 of Township 3 South, Range 38 East of the Willamette Meridian

UNION COUNTY, OREGON

SURVEYED FOR	City of La Grande & O.D.F. & W.	
SURVEYED BY	Gregory T. Blackman	11/07
Scale: 1" = 50'	Drawn by: J. S. H.	11/07

Survey Number 042-2007