

BASIS OF BEARING

Forward bearing as published by the U.S.C. and G.S. from Δ COLLEGE to Δ VALLEY Dated 1946.

SCALE: 1" = 500'

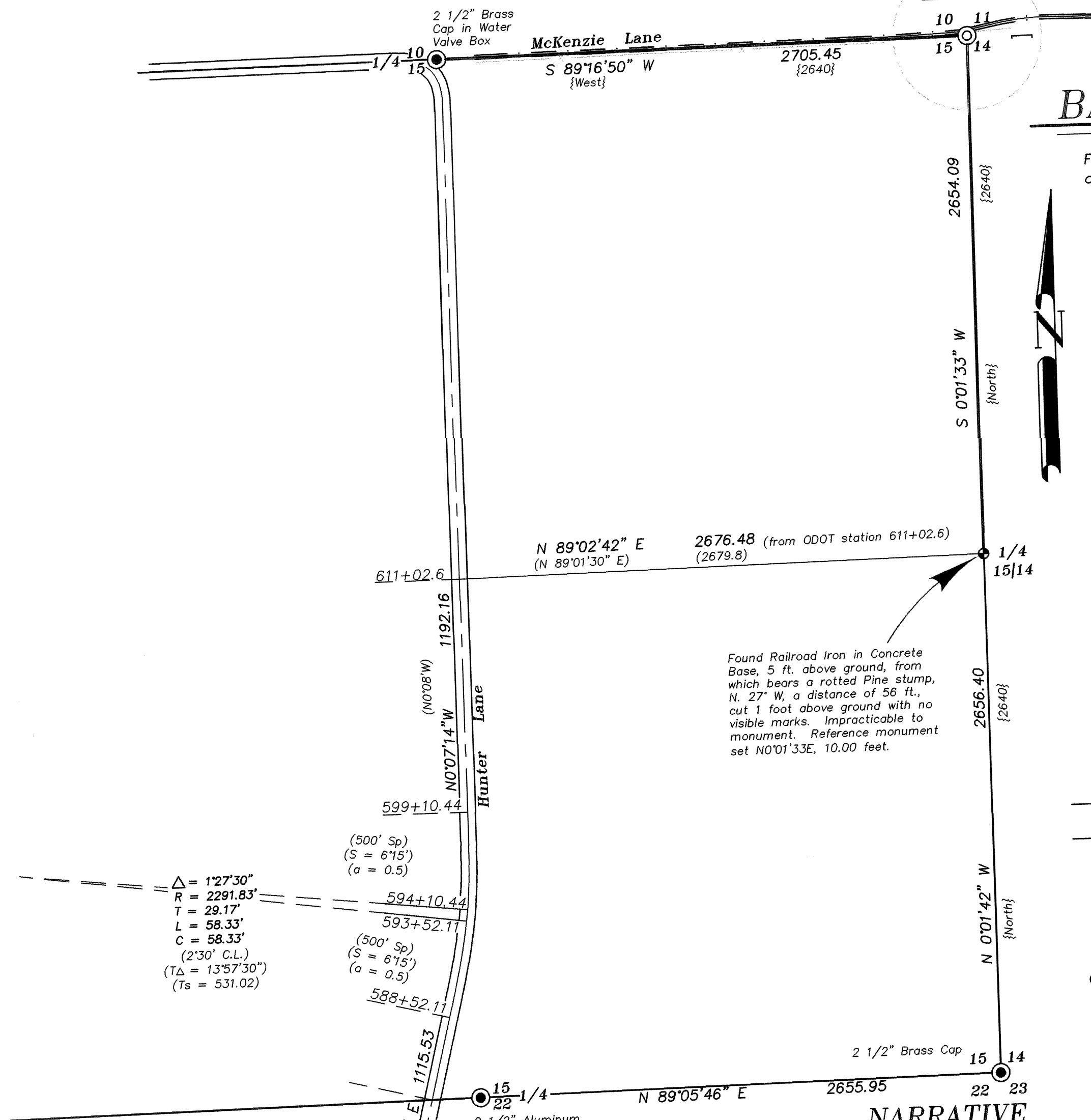
LEGEND

- Found 5/8" Iron Pin set by Survey Number 003-2004 with yellow plastic cap marked BGB SURVEY MARKER
- Found monument as noted, as per Union County Monumentation Records
- ⊙ Set 2 1/2" Aluminum cap, marked as per Union County Monumentation Records
- Chiseled "X" in top of existing railroad iron
- { } Record measurements of GLO Contract Number 103, by David Thompson, dated September 3, 1863
- () Record measurements of ODOT Strip Map 6B-26-22
- — — Centerline
- x — Existing Fence

REFERENCE MATERIAL

- GLO Contract Number 103, executed by David Thompson, dated September 3, 1863
- ODOT Strip Map No. 6B-26-22
- Survey Number 003-2004
- Union County Monumentation Records

SEE DETAIL



Found Railroad Iron in Concrete Base, 5 ft. above ground, from which bears a rotted Pine stump, N. 27° W, a distance of 56 ft., cut 1 foot above ground with no visible marks. Impracticable to monument. Reference monument set N 0°01'33"E, 10.00 feet.

NARRATIVE

This survey was done for Union County. The purpose of this survey was to monument the corner common to Sections 10, 11, 14 and 15 and the quarter corner common to Section 14 and 15 of Township 1 South, Range 38 East of the Willamette Meridian. The corners were originally set by David Thompson under GLO contract number 103 in 1863. A diligent search revealed no evidence of original monuments. On page 15 of Thompson's field notes, running on a true line between Sections 11 and 14, he makes a topographic call to monuments. In March of 2004, I talked to Glenn McKenzie about the existence of the 74.20 chains to a house bearing South 20 lks. distant. In March of 2004, I talked to Glenn McKenzie about the existence of the current house at the time of the original survey. Mr. McKenzie was in his late 80's at the time. Mr. McKenzie told me that the house had been rebuilt when he was a child, and that it was built very near to its original location. Mr. McKenzie passed away in August of 2006, before I could get a signed statement from him. I have taken the position that the house was rebuilt very near to as the North/South position of the original house, and I accept the existing the North/South fence line as the best evidence for the Easting North/South position of the Section Corner. I intersect a line 20 links North of the existing house with said existing fence line to establish the section of the corner. I intersect a line 20 links North of the existing house with said existing fence line to establish the section of the corner of 10, 11, 14 and 15. By using proportionate methods to establish the quarter corner to the south, the position fell within 2 feet of an existing railroad rail used as a fence corner. Retracement of ODOT map of Hunter Lane 6B-26-22, showed a tie to this quarter corner as well. Found pins from survey 003-2004 were used to establish the centerline stationing. Record measurements placed the corner about three feet East of this fence corner. A rotted stump cut a foot above the ground matched the record measurements for the northwest bearing tree when measured from the railroad rail, although no solid evidence of the northeast bearing tree could be found. From this evidence we accept the fence corner as the best remaining evidence of the quarter corner. I find no other unusual conditions with this survey.

Detail Scale 1" = 50'

$\Delta = 0'06'00"$
 R = 1909.86'
 T = 1.67'
 L = 3.33'
 C = 3.33'
 (3" C.L.)
 (T Δ = 9°06')
 (Ts = 302.11)

$\Delta = 127'30"$
 R = 2291.83'
 T = 29.17'
 L = 58.33'
 C = 58.33'
 (2'30" C.L.)
 (T Δ = 13°57'30")
 (Ts = 531.02)

$\Delta = 3'49'00"$
 R = 954.93'
 T = 31.82'
 L = 63.61'
 C = 63.60'
 (6" C.R.)
 (T Δ = 21°49')
 (Ts = 334.67)

N 88°52'33" E 103.15
 Bearing of Wall on Existing House
 Rebuilt on near original location

REGISTERED PROFESSIONAL LAND SURVEYOR

GREGORY T. BLACKMAN
 JULY 12, 1973
 991

Renewal Date: Dec. 31, 2007

UNION COUNTY SURVEYOR
 Date Received 12/26/07
 Date Filed 12/26/07
 By R. Robinson, Dary
 File No. 038-2007

Railroad Iron Fence Corner with "X" Chiseled in Top. Set Reference Monument N. 0°01'33" E., 10.00 ft. from True Corner Position

BAGETT, GRIFFITH & BLACKMAN 2006 Adams Avenue, LaGrande, Oregon Map of Survey		
Remonumentation of Corner common to Section 10, 11, 14 and 15 and Quarter Corner common to Sections 14 and 15, of Township 1 South, Range 38 East of the Willamette Meridian.		
UNION COUNTY, OREGON		
SURVEYED FOR	Union County	
SURVEYED BY	Gregory T. Blackman	12/6/2007
Scale: 1" = 500'	Drawn by: J.S.H.	12/10/2007

Survey Number 038-2007