

NARRATIVE

This survey was done at the request of Dan Woollard in order to locate the corners of his property. I use the existing section corner monuments for section 10 and set the East quarter corner by single proportion, then break the section in the standard manor. Mr. Woollards deed describes the property as an aliquot parcel of the section, so after breaking the section I locate the property lines and set monuments accordingly. I set monuments on the East right of way line of McAlister Road which are offset from the true property corners that fall in the road right of way. Note as shown on my map as well on Survey number 039-2002 the center line of McAlister Road and the center of section line are not the same, I tied the existing right of way monuments set by the reconstruction of McAlister Road (Map of Survey 039-2002), to accurately place the East right of way line and set my offset pins on this line. I find no unusual conditions with this survey.

BASIS OF BEARING

Forward bearing as published by the U.S.C. and G.S. from Δ COLLEGE to Δ VALLEY Dated 1946.

SCALE: 1"=300'

LEGEND

- Found aluminum monument as per Union County Monumentation Records.
- ⊙ Found aluminum cap in monument box set by Survey Number 039-2002 as per Union County monumentation records.
- ▲ Found 5/8" iron pin with yellow plastic cap marked AP&A, set by Survey No. 039-2002.
- ⊙ Set 2 1/2"x 30" aluminum monument as per Union County Monumentation Records.
- Found 5/8" iron pin with plastic cap marked "APA" set by survey number 19-85
- ⊙ Found 5/8" iron pin with plastic cap marked "BGB SURVEY MARKER" set by Major Partition Plat Number 2002-021
- Set 5/8"x30" iron pin with plastic cap marked "BGB SURVEY MARKER"
- ⬠ Set 5/8"x30" iron pin with a 2" aluminum cap as per Union County monumentation records.
- x — Existing fence line
- - - Centerline of road
- () Record information from Survey Number 19-85.
- [] Record information from Survey Number 039-2002.
- [[]] Record information from Survey Number 014-2002.
- (()) Record information from GLO.
- { } Record information from Survey Number 1-79.
- {} Record information from Minor Partition No. 2002-021.

REFERENCE MATERIAL

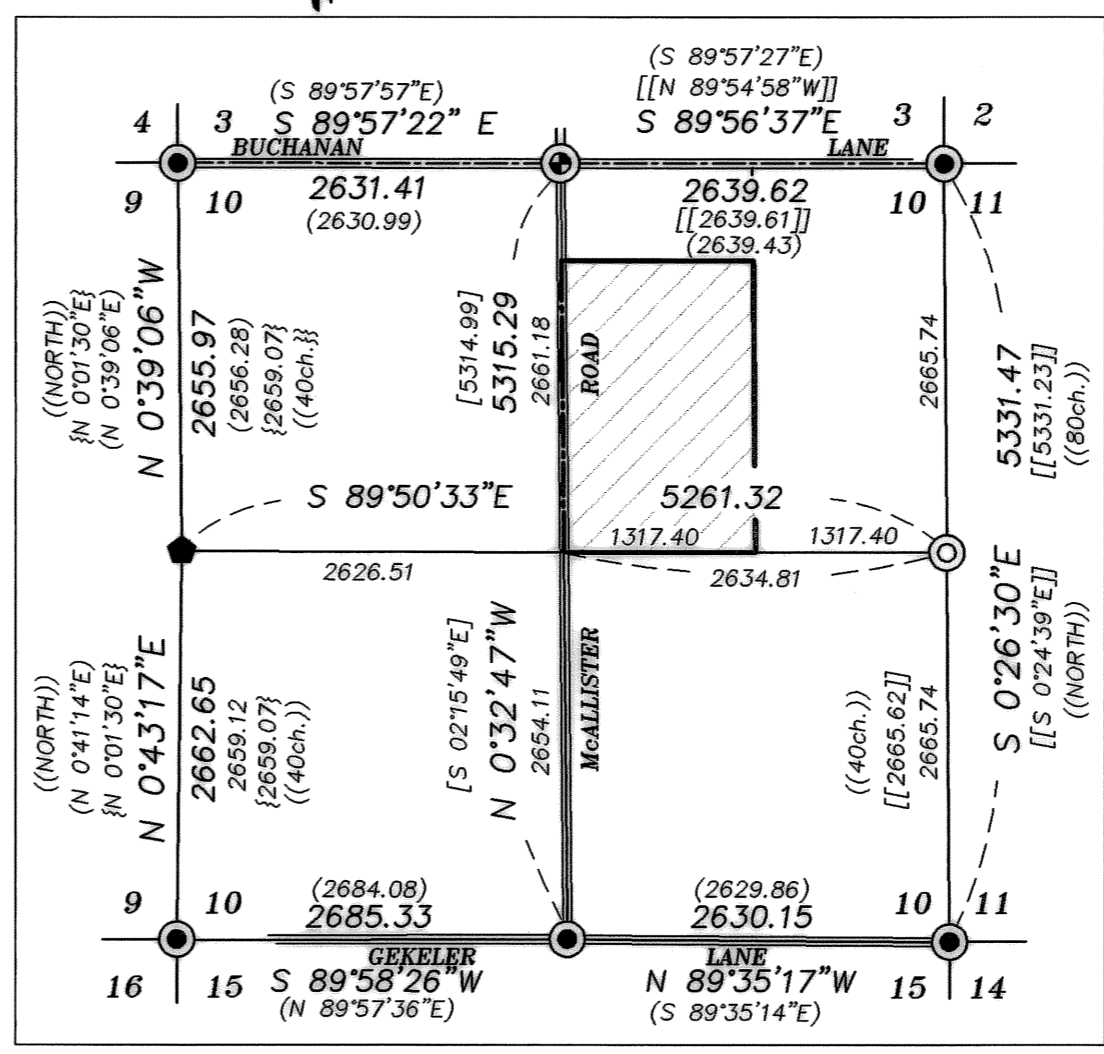
Union County Monumentation Records
 Survey Number 9-73
 Survey Number 024-1998
 Survey Number 014-2002
 Survey Number 039-2002
 Minor Partition Plat Number 1994-023
 Major Partition Plat Number 2002-021
 Minor Partition Plat Number 2005-003

DEED REFERENCES

Microfilm No. 20065468
 Microfilm No. 132525
 Book 141 Pg. 317

SCALE: 1"=1320'

SECTION BREAK



REGISTERED
**PROFESSIONAL
 LAND SURVEYOR**

OREGON
 JULY 15, 1973
GREGORY T. BLACKMAN
 991
 Renewal Date: Dec. 31, 2007

**UNION COUNTY
 SURVEYOR**
 Date Received 8/24/07
 Date Filed 8/24/07
 By R. Robinson, Deputy
 File No. 020-2007

BAGETT, GRIFFITH & BLACKMAN
 2006 Adams Avenue, LaGrande, Oregon
 Map of Survey

Situated in the Northeast quarter of Section 10,
 Township 3 South, Range 38 East of the Willamette
 Meridian, Union County, Oregon

SURVEYED FOR	Dan Woollard
SURVEYED BY	G.T.B.
Scale: 1"= 300'	Drawn by: G.T.B. 8-15-07