

BASIS OF BEARING

Solar observation taken at the Southwest corner of Section 15, Township 3 South, Range 40 East of the Willamette Meridian.

SCALE: 1" = 500'

LEGEND

- Found monument as per Union County Monumentation Records
- Set 5/8" Rebar with Aluminum Cap marked as per Union County Monumentation Records
- () Record Information of GLO Contract Number 102
- (()) Record information of GLO Contract Number 103
- { } Record information of GLO Contract Number 335
- [] Record information of Survey Number 46-79
- [[]] Record information of Survey Number 29-85
- x- Existing Fenceline
- Posted Line
- × Computed position only, no monument set

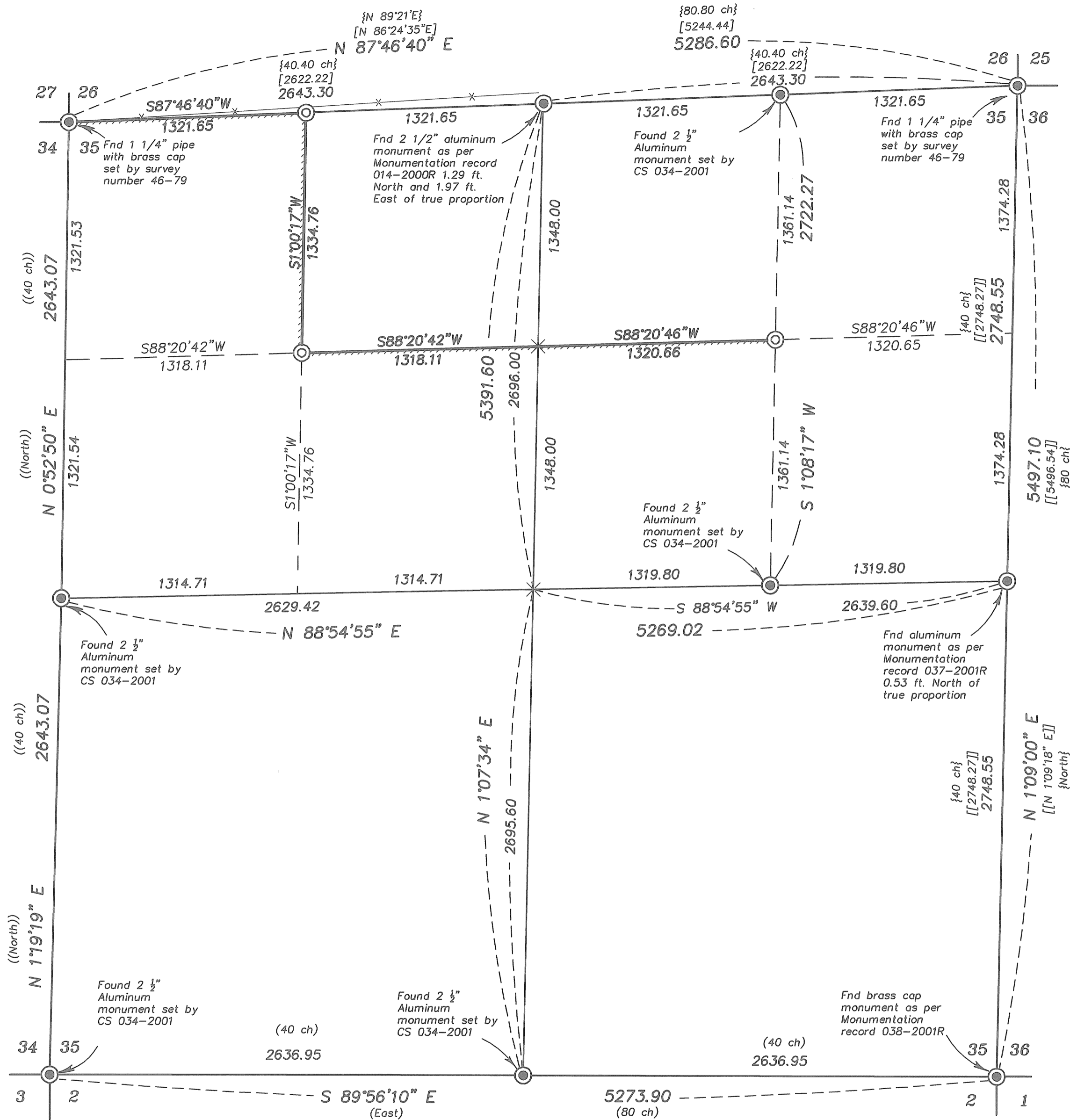
NARRATIVE

This survey was done at the request of Dave Wolf, ranch manager for Jeff Wright on behalf of Jeff Wright. He wanted the northern boundary of Mr. Wright's land in Section 35 monumented and steel posts set on line. The North and East quarter corners were found out of position relative to the true proportionate position between section corners. Monumentation records show that the intent of the surveyor was to place the corners at true proportionate position. Therefore, I called these monuments out of position, as shown on the map, and use the true proportionate position for the establishment of the sixteenth corners. The sixteenth corners were placed in accordance with the 1973 BLM Manual of Instructions. I find no unusual conditions with this survey.

REFERENCE MATERIAL

Union County Monumentation Records
 GLO Contract Number 102 by Timothy W. Davenport dated July 20, 1863
 GLO Contract Number 103 by David P. Thompson dated September 3, 1863
 GLO Contract Number 335 by W.B. Barr dated June 14, 1880
 Survey Number 46-79
 Survey Number 26-85
 Survey Number 29-85
 Survey Number 034-2001

DEED REFERENCES
 Microfilm Document Number 20062057
 Microfilm Document Number 20060384



REGISTERED
 PROFESSIONAL
 LAND SURVEYOR
 OREGON
 JULY 13, 1973
 GREGORY T. BLACKMAN
 991
 Renewal Date: Dec. 31, 2007

UNION COUNTY
 SURVEYOR
 Date Received 8/22/07
 Date Filed 8/22/07
 By [Signature]
 File No. 018-2007

BAGETT, GRIFFITH & BLACKMAN
 2006 Adams Avenue, LaGrande, Oregon
 Map of Survey
 Situate in the North half of Section 35, Township 3 South, Range 40 East of the Willamette Meridian
 UNION COUNTY, OREGON

SURVEYED FOR	Jeff Wright
SURVEYED BY	Gregory T. Blackman 7/20-7/24/07
Scale: 1" = 500'	Drawn by: J. S. H. 7/27-8/15/07

SURVEY NUMBER 018-2007