

BASIS OF BEARING

Forward bearing as published by the U.S.C. and G.S. from Δ COLLEGE to Δ VALLEY Dated 1946.

SCALE: 1"=50'

Curve Data

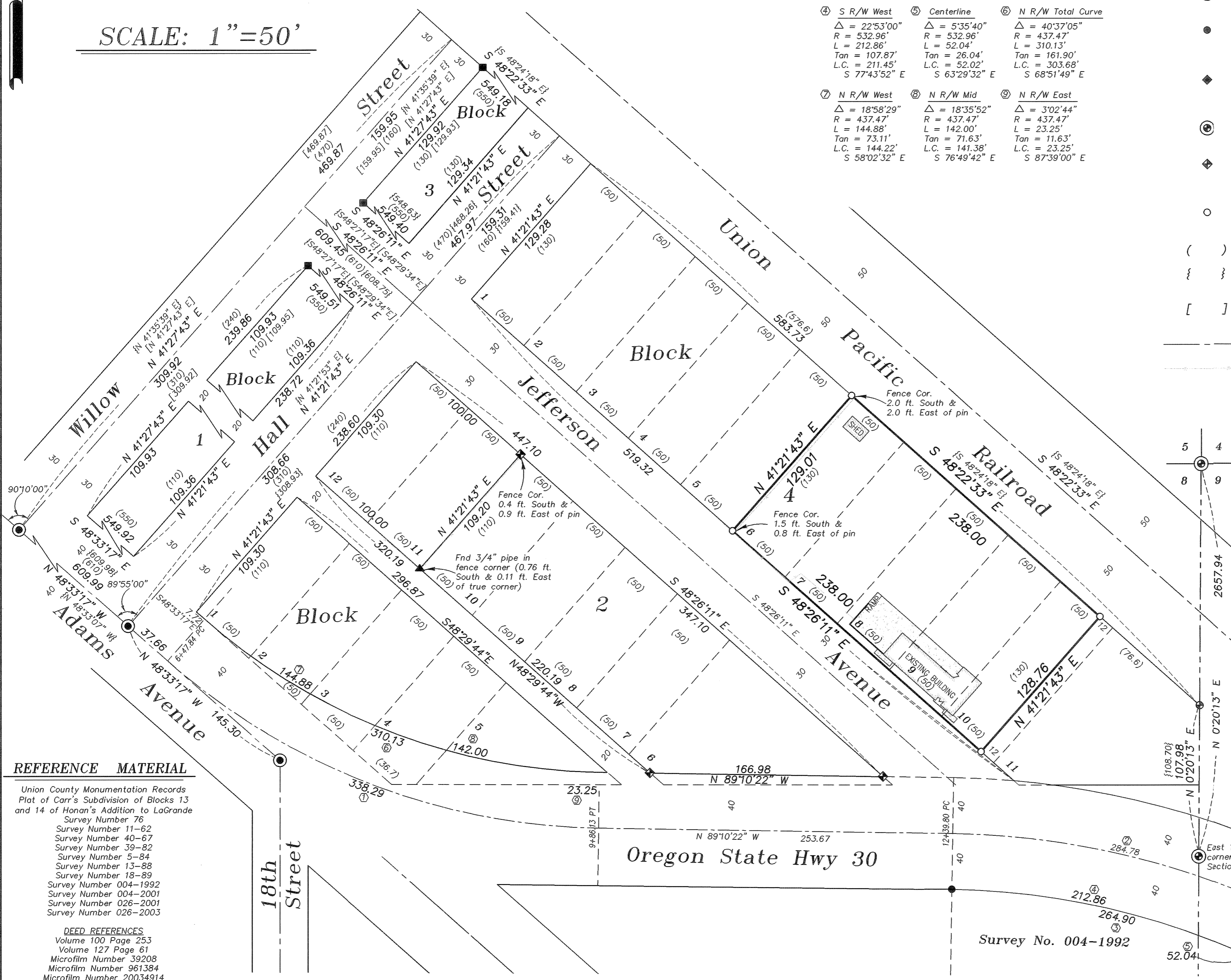
① Centerline $\Delta = 40'37'05''$ $R = 477.47'$ $L = 338.49'$ $Tan = 176.71'$ $L.C. = 331.44'$ $S 68'51'49'' E$	② Centerline $\Delta = 28'28'40''$ $R = 572.96'$ $L = 284.78'$ $Tan = 145.40'$ $L.C. = 281.86'$ $S 74'56'02'' E$	③ S R/W Total Curve $\Delta = 28'28'40''$ $R = 532.96'$ $L = 264.90'$ $Tan = 135.24'$ $L.C. = 262.18'$ $S 74'56'02'' E$
④ S R/W West $\Delta = 22'53'00''$ $R = 532.96'$ $L = 212.86'$ $Tan = 107.87'$ $L.C. = 211.45'$ $S 77'43'52'' E$	⑤ Centerline $\Delta = 5'35'40''$ $R = 532.96'$ $L = 52.04'$ $Tan = 26.04'$ $L.C. = 52.02'$ $S 63'29'32'' E$	⑥ N R/W Total Curve $\Delta = 40'37'05''$ $R = 437.47'$ $L = 310.13'$ $Tan = 161.90'$ $L.C. = 303.68'$ $S 68'51'49'' E$
⑦ N R/W West $\Delta = 18'58'29''$ $R = 437.47'$ $L = 144.88'$ $Tan = 73.11'$ $L.C. = 144.22'$ $S 58'02'32'' E$	⑧ N R/W Mid $\Delta = 18'35'52''$ $R = 437.47'$ $L = 142.00'$ $Tan = 71.63'$ $L.C. = 141.38'$ $S 76'49'42'' E$	⑨ N R/W East $\Delta = 3'02'44''$ $R = 437.47'$ $L = 23.25'$ $Tan = 11.63'$ $L.C. = 23.25'$ $S 87'39'00'' E$

LEGEND

- ▲ Found unrecorded 3/4" pipe, possibly set by survey number 40-67
- ⊕ Found 5/8" iron pin with plastic cap marked "APA" set by survey number 39-82
- ⊙ Found brass plaque set by survey number 13-88
- ⊙ Found 5/8" iron pin with plastic cap marked "BGA SURVEY MARKER" set by survey number 004-1992
- ◆ Found 5/8" iron pin with plastic cap marked "WESTLAKE CONSULTANTS" set by survey number 026-2001
- ⊙ Found brass plaque as per Union County Monumentation records
- ◆ Found 5/8" iron pin with plastic cap marked "BGB SURVEY MARKER" set by survey number 026-2003
- Set 5/8"x30" iron pin with plastic cap marked "BGB SURVEY MARKER"
- () Record distance of Carr's Subdivision
- { } Record information of survey number 004-2001
- [] Record information of survey number 026-2001
- Centerline
- - - Existing fence line

NARRATIVE

This survey was done at the request of Mary Burns of Vortex Engineering. The purpose of the survey was to define the limits of a topographic location survey on a lease site. I retrace the surveys listed in the reference material and base the location of the block on survey number 026-2003. The general scheme of the location within this block is to give the lots within the Block full measure in width, with Lot 11 being a remnant. For a full discussion of the placement of the blocks in this area, see survey number 026-2003. The exterior of the tract was determined by Vortex Engineering, as the ownership includes all of Lots 6 through 11. However, the ownership was segregated in February 1964 at the location shown, with the tract to the East being Lot 11 and the Easterly 12 feet of Lot 10. As described above, I give the lots full measure in width and place the monuments accordingly. I find the fence along the Westerly portion of the tract encroaches onto this tract as shown. I find no other unusual conditions on this survey.



REFERENCE MATERIAL

Union County Monumentation Records
 Plat of Carr's Subdivision of Blocks 13 and 14 of Honan's Addition to LaGrande
 Survey Number 76
 Survey Number 11-62
 Survey Number 40-67
 Survey Number 39-82
 Survey Number 5-84
 Survey Number 13-88
 Survey Number 18-89
 Survey Number 004-1992
 Survey Number 004-2001
 Survey Number 026-2001
 Survey Number 026-2003

DEED REFERENCES

Volume 100 Page 253
 Volume 127 Page 61
 Microfilm Number 39208
 Microfilm Number 961384
 Microfilm Number 20034914

UNION COUNTY SURVEYOR		REGISTERED PROFESSIONAL LAND SURVEYOR <i>Rick G. Robinson</i> OREGON JULY 17, 1986 RICK G. ROBINSON 2219 Renewal Date: Dec. 31, 2008
Date Received	7/23/07	
Date Filed	9/6/07	
By	<i>R.G.R.</i>	
File No.	015-2007	
BAGETT, GRIFFITH & BLACKMAN 2006 Adams Avenue, LaGrande, Oregon Map of Survey		
Lots 6,7,8,9, and Lot 10, excepting the Easterly 12 feet, Block 4 of Carr's Subdivision of Blocks 13 and 14 of Honan's Addition to LaGrande		
UNION COUNTY, OREGON		
SURVEYED FOR	Vortex Engineering	
SURVEYED BY	R.G.R.	7/07
Scale: 1" = 50'	Drawn by: R.G.R.	7/07

SURVEY NUMBER 015-2007