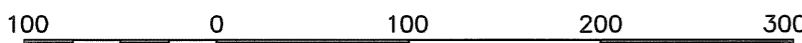


**SCALE: 1"=100'**

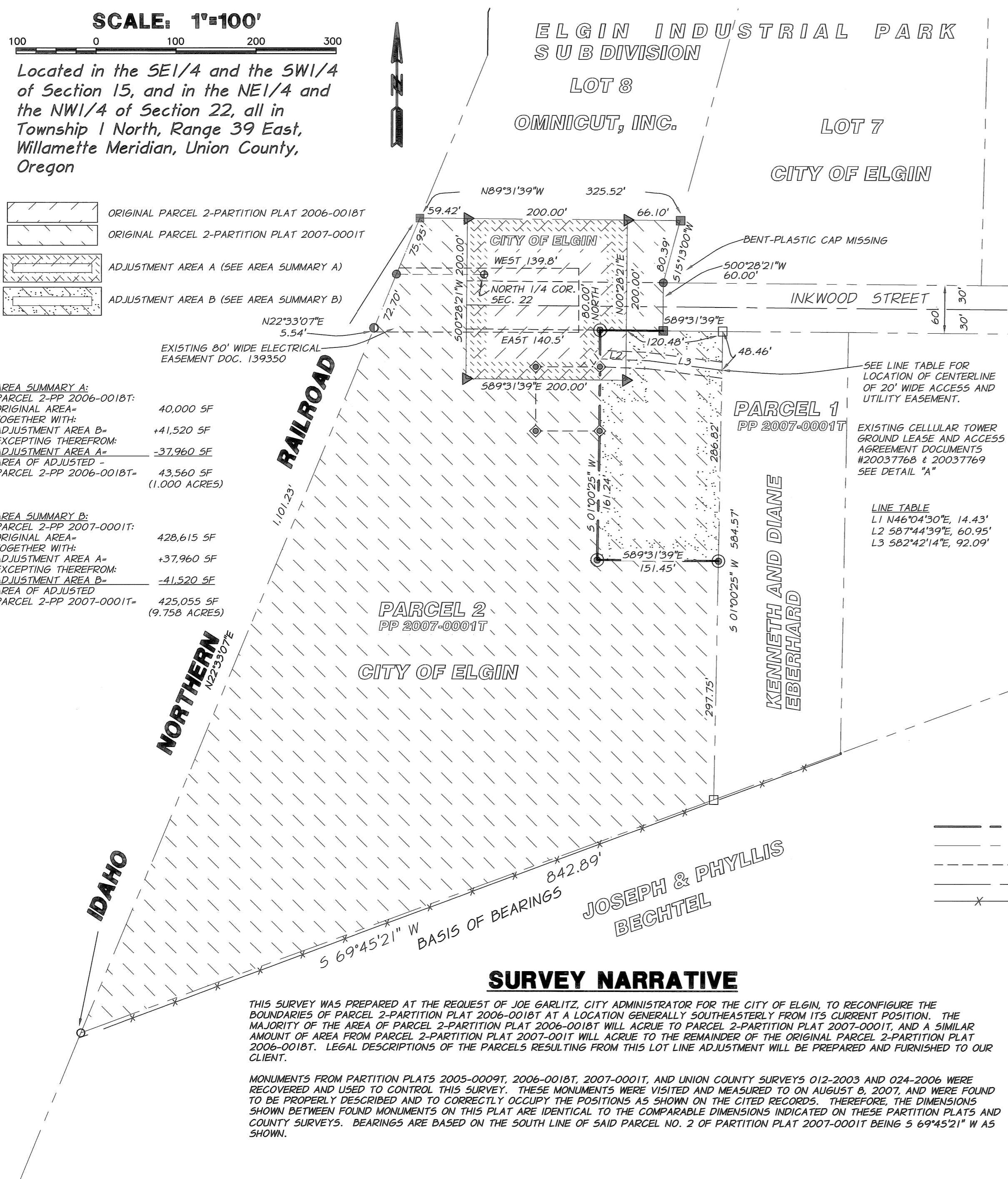


Located in the SE1/4 and the SW1/4 of Section 15, and in the NE1/4 and the NW1/4 of Section 22, all in Township 1 North, Range 39 East, Willamette Meridian, Union County, Oregon

- ORIGINAL PARCEL 2-PARTITION PLAT 2006-0018T
- ORIGINAL PARCEL 2-PARTITION PLAT 2007-0001T
- ADJUSTMENT AREA A (SEE AREA SUMMARY A)
- ADJUSTMENT AREA B (SEE AREA SUMMARY B)

**AREA SUMMARY A:**  
 PARCEL 2-PP 2006-0018T: 40,000 SF  
 ORIGINAL AREA+  
 TOGETHER WITH:  
 ADJUSTMENT AREA B-  
 EXCEPTING THEREFROM:  
 ADJUSTMENT AREA A-  
 AREA OF ADJUSTED  
 PARCEL 2-PP 2006-0018T- 43,560 SF  
 (1.000 ACRES)

**AREA SUMMARY B:**  
 PARCEL 2-PP 2007-0001T: 428,615 SF  
 ORIGINAL AREA+  
 TOGETHER WITH:  
 ADJUSTMENT AREA A-  
 EXCEPTING THEREFROM:  
 ADJUSTMENT AREA B-  
 AREA OF ADJUSTED  
 PARCEL 2-PP 2007-0001T- 425,055 SF  
 (9.758 ACRES)



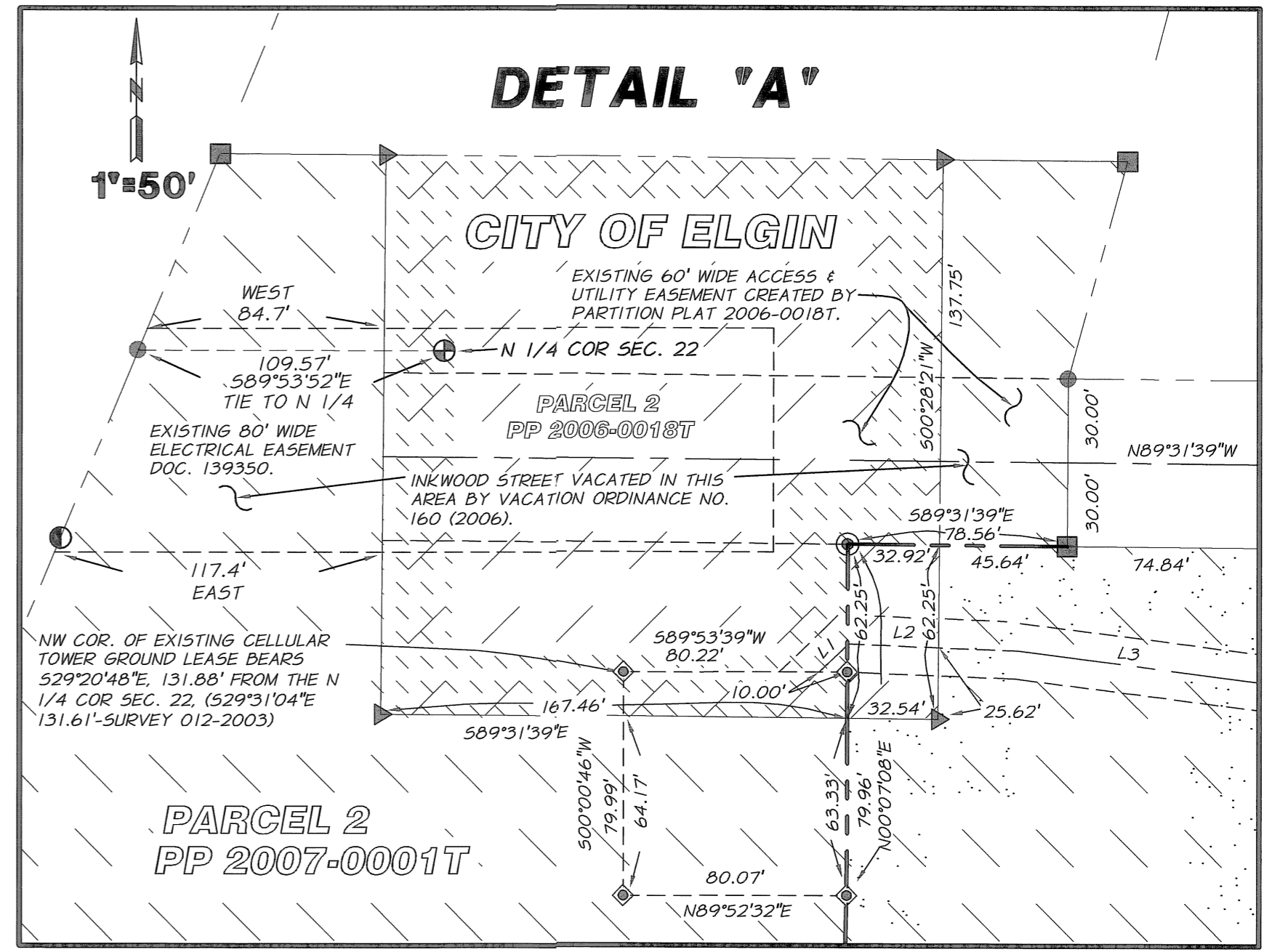
**SURVEY NARRATIVE**

THIS SURVEY WAS PREPARED AT THE REQUEST OF JOE GARLITZ, CITY ADMINISTRATOR FOR THE CITY OF ELGIN, TO RECONFIGURE THE BOUNDARIES OF PARCEL 2-PARTITION PLAT 2006-0018T AT A LOCATION GENERALLY SOUTHEASTERLY FROM ITS CURRENT POSITION. THE MAJORITY OF THE AREA OF PARCEL 2-PARTITION PLAT 2006-0018T WILL ACURE TO PARCEL 2-PARTITION PLAT 2007-0001T, AND A SIMILAR AMOUNT OF AREA FROM PARCEL 2-PARTITION PLAT 2007-001T WILL ACURE TO THE REMAINDER OF THE ORIGINAL PARCEL 2-PARTITION PLAT 2006-0018T. LEGAL DESCRIPTIONS OF THE PARCELS RESULTING FROM THIS LOT LINE ADJUSTMENT WILL BE PREPARED AND FURNISHED TO OUR CLIENT.

MONUMENTS FROM PARTITION PLATS 2005-0009T, 2006-0018T, 2007-0001T, AND UNION COUNTY SURVEYS 012-2003 AND 024-2006 WERE RECOVERED AND USED TO CONTROL THIS SURVEY. THESE MONUMENTS WERE VISITED AND MEASURED TO ON AUGUST 8, 2007, AND WERE FOUND TO BE PROPERLY DESCRIBED AND TO CORRECTLY OCCUPY THE POSITIONS AS SHOWN ON THE CITED RECORDS. THEREFORE, THE DIMENSIONS SHOWN BETWEEN FOUND MONUMENTS ON THIS PLAT ARE IDENTICAL TO THE COMPARABLE DIMENSIONS INDICATED ON THESE PARTITION PLATS AND COUNTY SURVEYS. BEARINGS ARE BASED ON THE SOUTH LINE OF SAID PARCEL NO. 2 OF PARTITION PLAT 2007-0001T BEING S 69°45'21" W AS SHOWN.

SEE LINE TABLE FOR LOCATION OF CENTERLINE OF 20' WIDE ACCESS AND UTILITY EASEMENT.

**LINE TABLE**  
 L1 N46°04'30"E, 14.43'  
 L2 S87°44'39"E, 60.95'  
 L3 S82°42'14"E, 92.09'



**LEGEND**

- INDICATES A FOUND 5/8 INCH IRON ROD WITH A PLASTIC CAP MARKED "BGB SURVEY MARKER" FROM THE PLAT OF THE ELGIN INDUSTRIAL PARK.
- ◆ INDICATES A FOUND 5/8 INCH IRON ROD WITH A PLASTIC CAP MARKED "STRATTON 1111", SET BY UNION COUNTY SURVEY 012-2003.
- INDICATES A FOUND 5/8 INCH IRON ROD WITH A PLASTIC CAP MARKED "APA", SET BY UNION CO. SURVEY 014-2004.
- ⊙ INDICATES A FOUND 5/8 INCH IRON ROD WITH A PLASTIC CAP MARKED "APA", SET BY PARTITION PLAT 2005-0009T.
- ⊕ INDICATES A FOUND 1 INCH IRON ROD IN CONCRETE PER UNION COUNTY MONUMENTATION RECORDS 84-86R.
- INDICATES A FOUND 5/8 INCH IRON ROD WITH A PLASTIC CAP MARKED "APA", SET BY UNION COUNTY SURVEY 024-2006.
- ▶ INDICATES A FOUND 5/8 INCH IRON ROD WITH A PLASTIC CAP MARKED "APA", SET BY PARTITION PLAT 2006-0018T.
- INDICATES A FOUND 5/8 INCH IRON ROD WITH A 1-1/2" DIA. ALUM. CAP MARKED "APA OR 2849 WA 41295", SET BY PARTITION PLAT 2007-0001T.
- ⊗ INDICATES A SET 5/8 INCH BY 30 INCH IRON ROD WITH A 1-1/2" DIA. ALUM. CAP MARKED "APA OR 2849 WA 41295".
- — — INDICATES ADJUSTED PARCEL BOUNDARY LINE
- — — INDICATES ADJOINING BOUNDARY LINE
- — — INDICATES EXISTING EASEMENT LINE
- — — INDICATES CENTERLINE OF EASEMENT OR RIGHT OF WAY
- — — INDICATES EXISTING FENCE LINE

**REFERENCES**

UNION COUNTY SURVEY NUMBER 012-2003, 014-2004, 024-2006  
 ELGIN INDUSTRIAL PARK SUBDIVISION, MF#20002239, PLAT CABINET B-570 & 571  
 UNION COUNTY LAND CORNER RECORD FILE 84-86R FOR N 1/4 COR SEC. 22  
 UNION COUNTY PARTITION PLAT 2005-0009T  
 UNION COUNTY PARTITION PLAT 2006-0018T (DOC. NO. 2006-6196T)  
 MICROFILM DOCUMENT #5 20037768, 20037769, 139350,  
 CITY OF ELGIN-VACATION ORDINANCE NO. 160 (2006) (UNION CO. MICROFILM DOC. NO. 20063486)  
 UNION COUNTY PARTITION PLAT 2007-0001T

**UNION COUNTY SURVEYOR**

Date Received 8-28-07  
 Date Filed 9/1/07  
 by P. Robinson, Deputy  
 File No. 014-2007

**REGISTERED PROFESSIONAL LAND SURVEYOR**  
  
 OREGON  
 JANUARY 28, 1988  
 MICHAEL B. POSADA  
 0248LS  
 EXPIRES: 12-31-08  
 DATED: 08-28-07

**LOT LINE ADJUSTMENT**  
**PARCEL 2 PP 2006-0018T & PARCEL 2 PP 2007-0001T**  
**CITY OF ELGIN, UNION COUNTY, OREGON**

CITY OF ELGIN, UNION COUNTY, OR. P.O. BOX 128  
 ELGIN, OREGON 97827

SCALE: AS SHOWN  
 DATE: AUG., 2007  
 JOB NO. 122-17

**anderson perry & associates, inc.**  
 ENGINEERING SURVEYING NATURAL RESOURCES  
 LA GRANDE, OR. WALLA WALLA, WA.

SHEET **1/1**