

# BASIS OF BEARING

Forward bearing as published by the U.S.C. and G.S. from  $\Delta$  COLLEGE to  $\Delta$  VALLEY Dated 1946.

SCALE: 1" = 60'

## REFERENCE MATERIAL

Union County Remonumentation Records  
Original Plat of CLEARWATER POND SUBDIVISION  
Survey No. 57-73  
Survey No. 6-89  
Minor Partition No. 2001-021  
Minor Partition No. 2007-0007T

### DEED REFERENCES

Book 142 Page 747  
Microfilm No. 137258  
Microfilm No. 155109  
Microfilm No. 20020819

## LEGEND

- Found 5/8" iron pin with plastic cap marked "BGA SURVEY MARKER", set by the plat of CLEARWATER POND SUBDIVISION.
- ⊕ Found 5/8" iron pin with plastic cap marked "BGB SURVEY MARKER", set by Minor Partition number 2001-021.
- ◆ Found 5/8" iron pin set by Survey number 57-73.
- ⊙ Found 2 1/2" aluminum cap as per Union County monumentation records.
- Found 5/8" iron pin with plastic cap marked "BGB SURVEY MARKER", set by Minor Partition number 2007-0007T.
- Set 5/8"x30" iron pin with plastic cap marked "BGB SURVEY MARKER".
- Center Line of road
- X-X- Existing Fence line
- - - Easement Line
- { } Record information from Survey No. 57-73.
- [ ] Record information from Minor Partition No. 2001-021.
- (( )) Record information from Deed.

## NARRATIVE

This survey was done at the request of Gust Tsiatsos in order to adjust Parcels 1 and 3 of Minor Partition Plat Number 20070007T as shown. Mr. Tsiatsos wished to add an additional 12 feet of land to Parcel 1. I found the monuments set by the partition and used them to control the position of the adjusted line. I find no unusual conditions with this survey.

REGISTERED  
PROFESSIONAL  
LAND SURVEYOR

*Rick G. Robinson*  
OREGON  
JULY 17, 1986  
RICK G. ROBINSON  
2219

Renewal Date: Dec. 31, 2008

**BAGETT, GRIFFITH & BLACKMAN**  
2006 Adams Avenue, LaGrande, Oregon

Map of Survey  
Lot Line Adjustment  
Between Parcels 1 and 3 of Minor Partition Plat  
Number 20070007T, situated in the Southwest  
quarter of Section 34, Township 2 South, Range 38  
East of the Willamette Meridian  
UNION COUNTY, OREGON

SURVEYED FOR	Valley Rentals, LLC	
SURVEYED BY	R.G.R.	7/07
Scale: 1" = 60'	Drawn by: R.G.R.	7/07

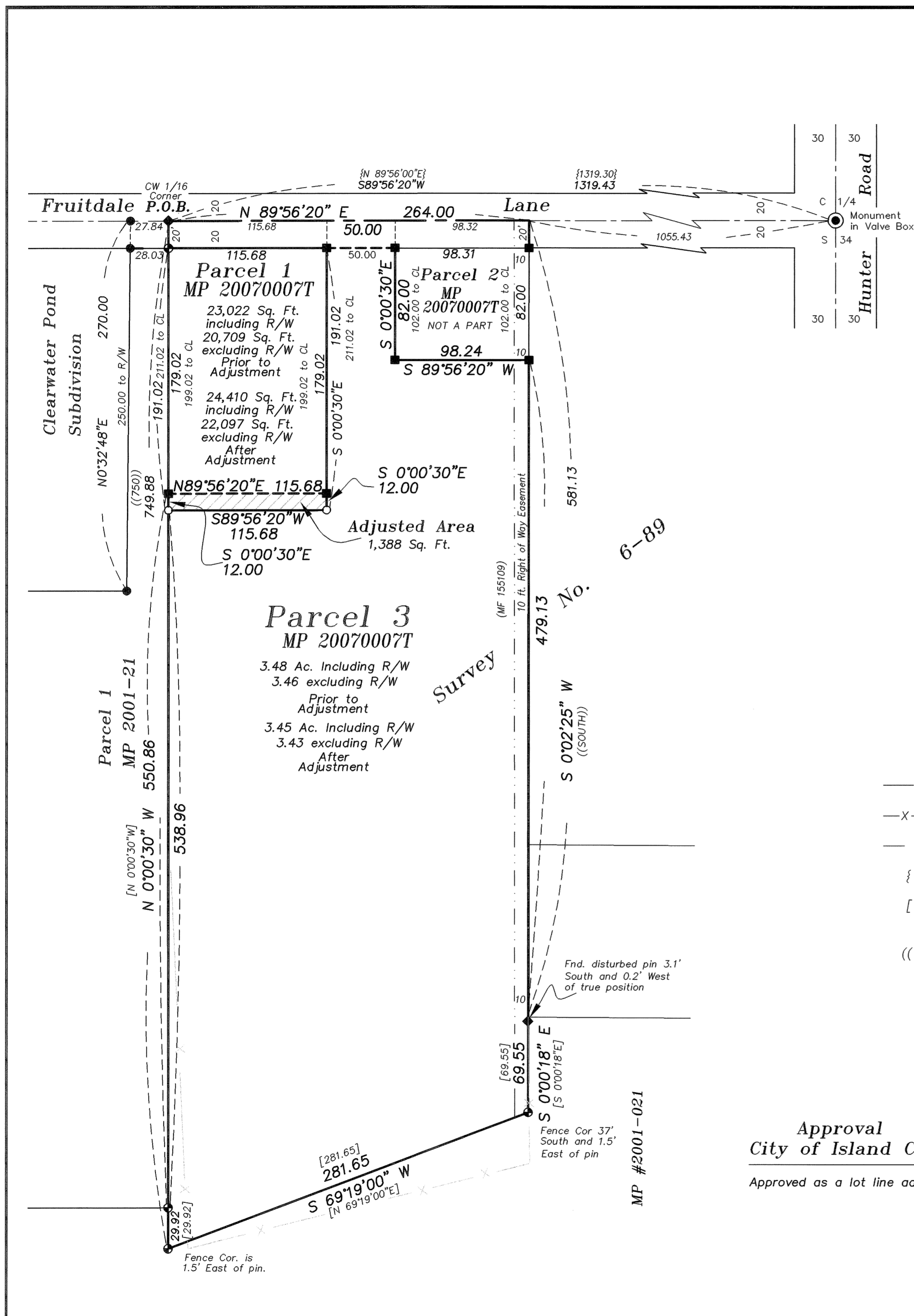
UNION COUNTY  
SURVEYOR

Date Received 7/6/07  
Date Filed 7/6/07  
By Rygg & Bla  
File No. 012-2007

Approval  
City of Island City

Approved as a lot line adjustment this 6<sup>th</sup> day of July, 2007.

*Judy A. Rygg*  
Judy A. Rygg, Planning Officer  
City of Island City



SURVEY NUMBER 012-2007