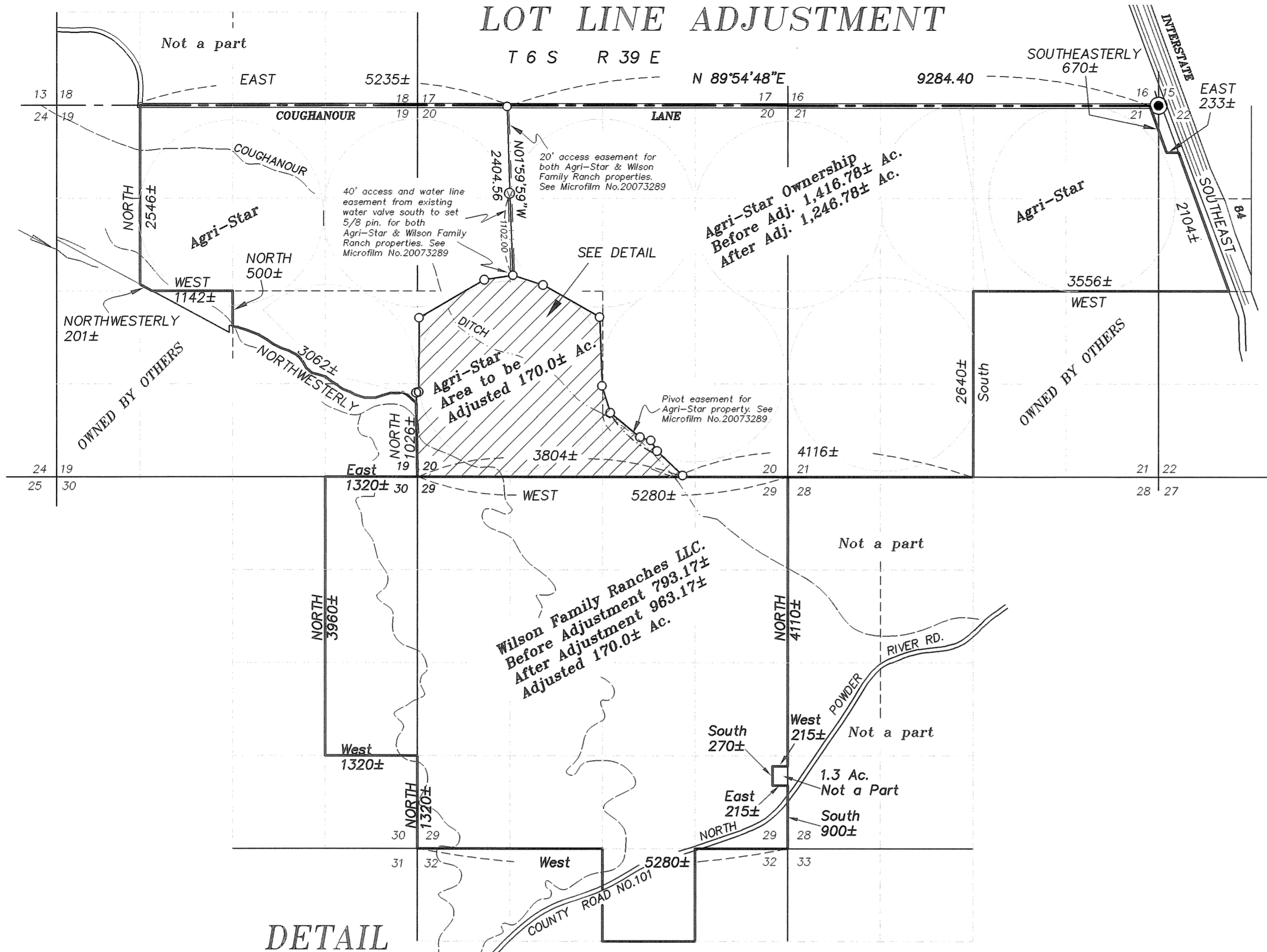


LOT LINE ADJUSTMENT



BASIS OF BEARING

Solar observations taken at a point 3550 feet South and 3360 feet West of the Northeast corner of Section 22, Township 6 South, Range 39 East of the Willamette Meridian

SCALE: 1"=1000'

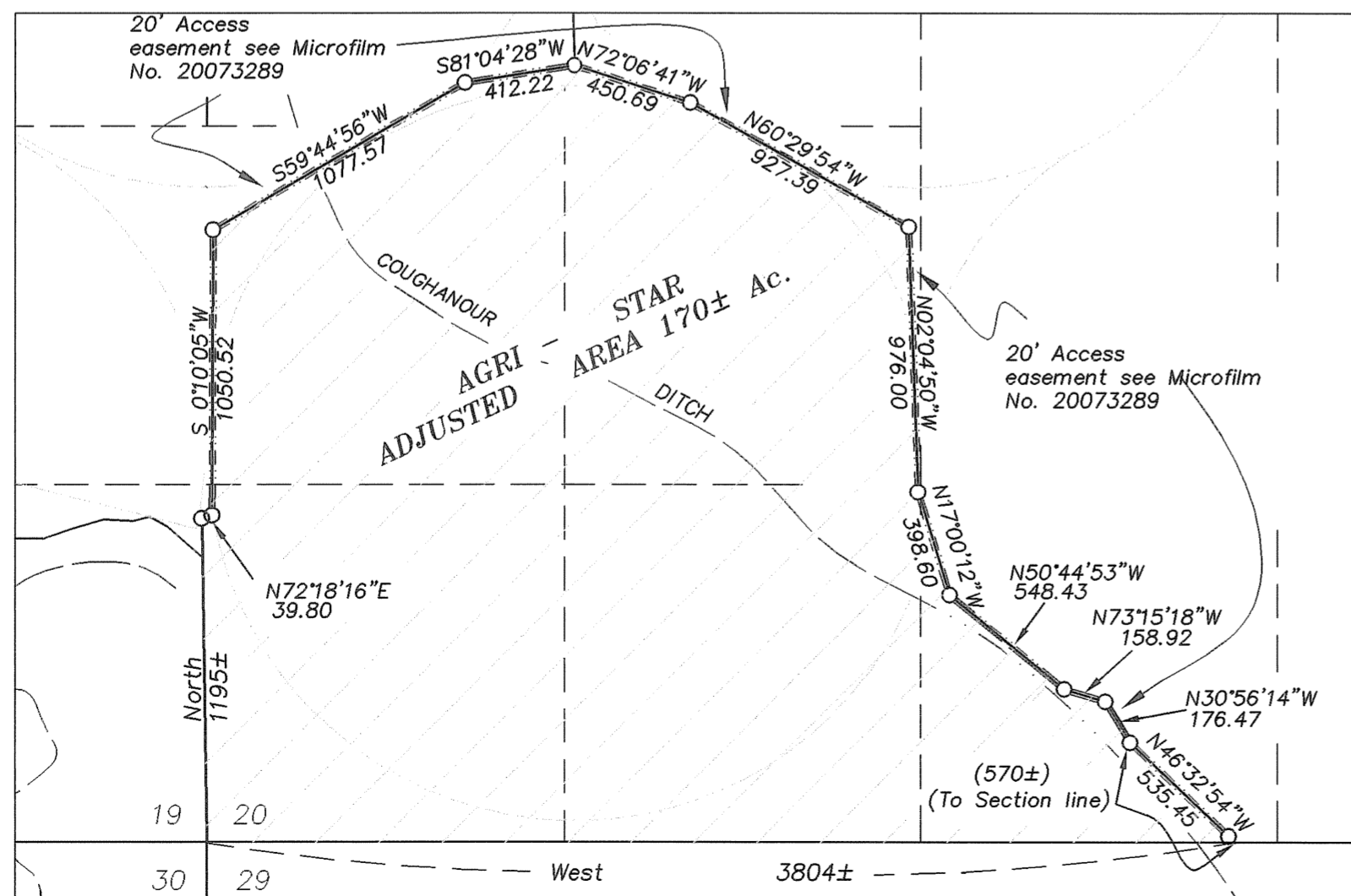
LEGEND

- ⊙ Found 2 1/2" monument in water valve box set by Survey number 012-2001.
- Set 5/8" x 30" rebar with yellow plastic cap marked "BGB SURVEY MARKER".
- Center line of road
- ~ Existing stream or ditch
- - - Easement line
- Ⓧ Existing water valve

REFERENCE MATERIAL

- Survey No. 012-2001
- Deeds
- Microfilm No. 20073185
- Microfilm No. 20072262
- Microfilm No. 150299
- Microfilm No. 131261
- Microfilm No. 980623
- Microfilm No. 151793
- Microfilm No. 131966
- Microfilm No. 983895
- Microfilm No. 9330087
- Microfilm No. 20073289

DETAIL



SCALE: 1"=600'

NARRATIVE

This Lot Line Adjustment was done at the request of Doug Lewis of Agri-Star. I set monuments for the adjusted line in the fields at the points shown to me by Doug Lewis. At the direction of Doug Lewis and the Wilson Family Ranch the access and water line easement along with the pivot easement all as shown on this map are filed with deed see Microfilm number 20073289. No attempt was made to break the section or locate the rest of the property corners shown on this map of Survey. I find no unusual conditions with this survey.

REGISTERED
PROFESSIONAL
LAND SURVEYOR
Rick G. Robinson
OREGON
JULY 17, 1986
RICK G. ROBINSON
2219
Renewal Date: Dec. 31, 2008

UNION COUNTY
SURVEYOR
Date Received _____
Date Filed 6/26/07
By [Signature]
File No. 009-2007

BAGETT, GRIFFITH & BLACKMAN
2006 Adams Avenue, LaGrande, Oregon
Map of Survey

Situated in Section 20, Township 6 South, Range 39 East of the Willamette Meridian. Union County, Oregon

SURVEYED FOR	Doug Lewis of ARG1 -STAR INC.
SURVEYED BY	R.G.R.
Scale: 1"=1000'	Drawn by: G.T.B. 6-13-07

SURVEY NUMBER 009-2007