

# BASIS OF BEARING

True bearing between the found monument at Second and "E" Street and the found monument at Second and "B" Street is N 52°01'38" E, as determined by measurement by GPS

SCALE: 1"=100'

## LEGEND

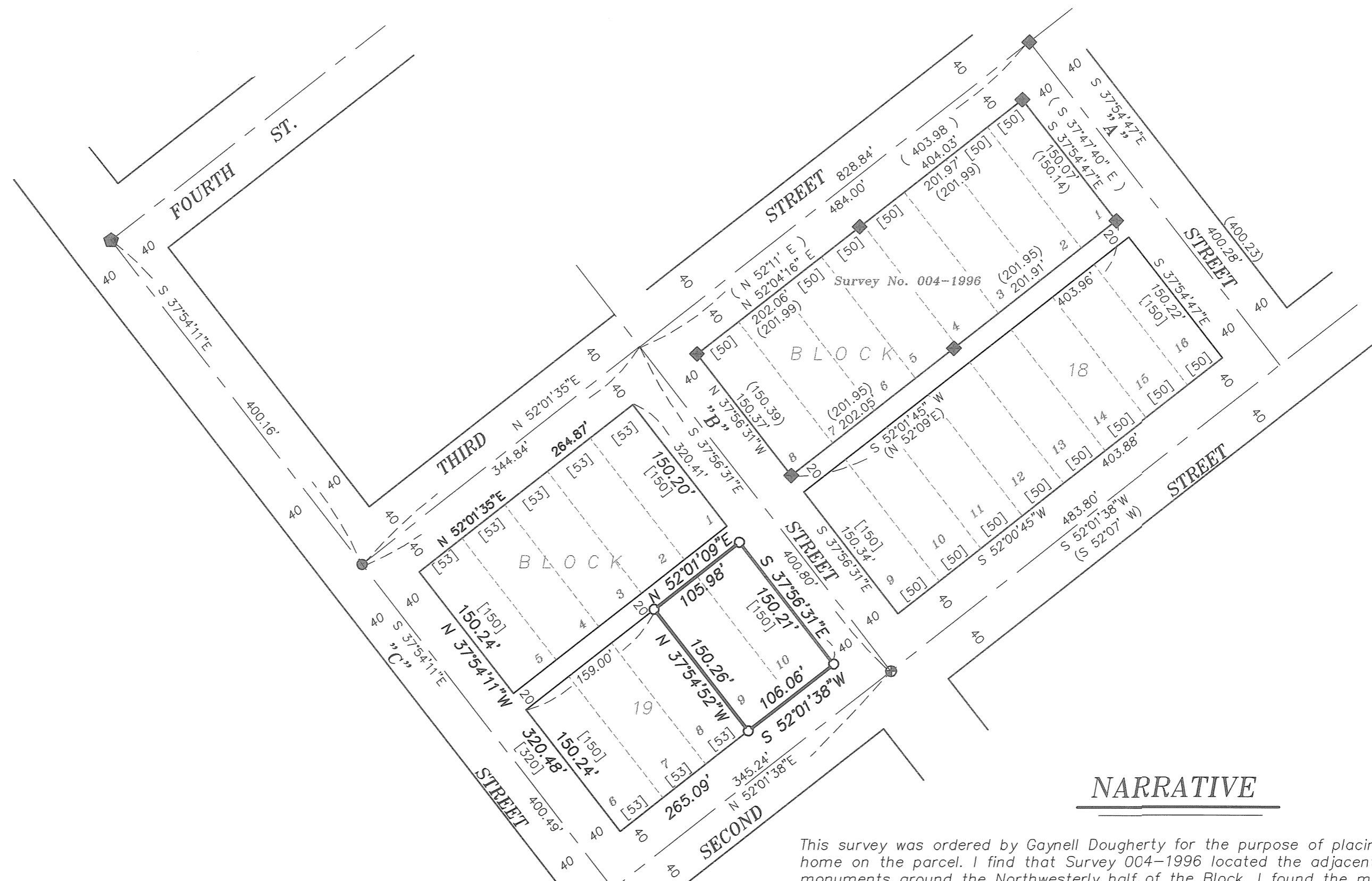
- Found 5/8" iron pin with plastic cap marked HANLEY ENGR. PLS 1206 at corner set by Survey Number 004-1996
- ⊕ Found Aluminum cap marked believed to have been set by Survey Number 033-2005
- Found spike as described in Survey Number 033-2005
- ◆ Found 1 1/2" square iron pin as described in Survey Number 043-1993
- Set 5/8"x30" iron pin with plastic cap marked "BGB SURVEY MARKER"
- Centerline of Street
- ( ) Record bearing or distance of Survey Number 004-1996
- [ ] Record distance of NORTH POWDER TOWN SITE

## REFERENCE MATERIAL

Plat of North Powder Town site  
 Minor Partition Number 1997-04  
 Survey Number 043-1993  
 Survey Number 04-1996  
 Survey Number 033-2005

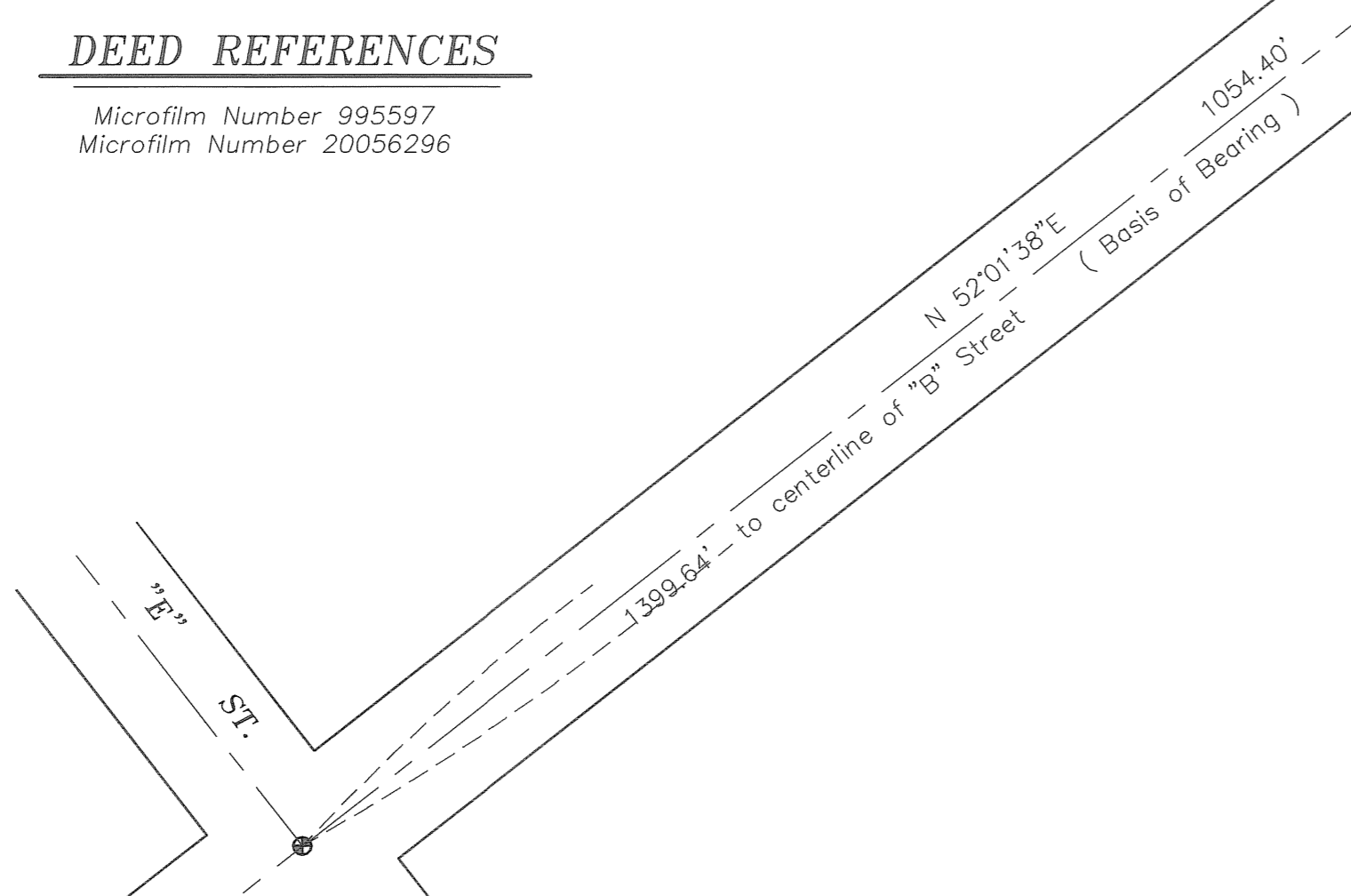
## DEED REFERENCES

Microfilm Number 995597  
 Microfilm Number 20056296



## NARRATIVE

This survey was ordered by Gaynell Dougherty for the purpose of placing a manufactured home on the parcel. I find that Survey 004-1996 located the adjacent Block 18, setting monuments around the Northwestern half of the Block. I found the monuments as shown and used the positions to establish the centerline of Third Street 40 feet Northwesternly of the found monuments, driving a line from the found monument at the intersection of Third and "A" to the monument at Third and "C". I place the intersection of Third and "B" by intersect of a line 40 feet distant from the found monuments along the Southerly line of said Block 18. I also find that there are several aluminum caps in Second Street assumed to have been set by the State Highway after new construction of Second Street. The monuments were set at Second and "B", Second and "E". I find that Survey Number 033-2005 refers to found monuments at these positions, however it is my assumption that a final plat has not yet been filed showing the aluminum monuments being placed. I place the Centerline of "C" Avenue by driving a line from the found monuments at Fourth and "C" and at Third and "C" to the centerline of Second Street as established by the found monuments at Second and "E" and Second and "B". I establish the centerline of Second and "A" by driving a line parallel to and 40 feet distant from the found monuments along said "A" Street to the centerline of Second Street as extended from the found monument at Second and "B" to the point of intersection. I also note that the assessor plat indicates that the dimensions of the Original Town site of North Powder were omitted. It appears to me that the dimensions are actually on the plat, but not on each block. They are noted at the top and bottom of the plat, and are not repeated. I proportion the lot corners into position in the standard single proportion method. I find that there is an existing house, ( to be removed ) located on the Northerly line of Lot 10. I find no unusual conditions on this survey.



UNION COUNTY SURVEYOR  
 Date Received 11/15/06  
 Date Filed 11/21/06  
 By R. ROBINSON DEWITT  
 File No. 039-2006

REGISTERED PROFESSIONAL LAND SURVEYOR  
 Gregory T. Blackman  
 OREGON JULY 13, 1973  
 GREGORY T. BLACKMAN 991  
 Renewal Date: Dec. 31, 2007

<b>BAGETT, GRIFFITH &amp; BLACKMAN</b> 2006 Adams Avenue, LaGrande, Oregon Map of Survey		
Map of Survey of Lots Numbered 9 and 10 of Block 19 of the TOWN SITE OF NORTH POWDER, Section 22, Township 6 South Range 39 East, WM Union County, Oregon		
SURVEYED FOR	Gaynell Dougherty	
SURVEYED BY	GTB	9/22/06
Scale: 1"=100 ft.	Drawn by: GTB	11/15/06

Survey Number 039-2006