

BASIS OF BEARING

Solar observation taken at the Southwest corner of Section 15, Township 3 South, Range 40 East of the Willamette Meridian.

SCALE: 1"=50'

REFERENCE MATERIAL

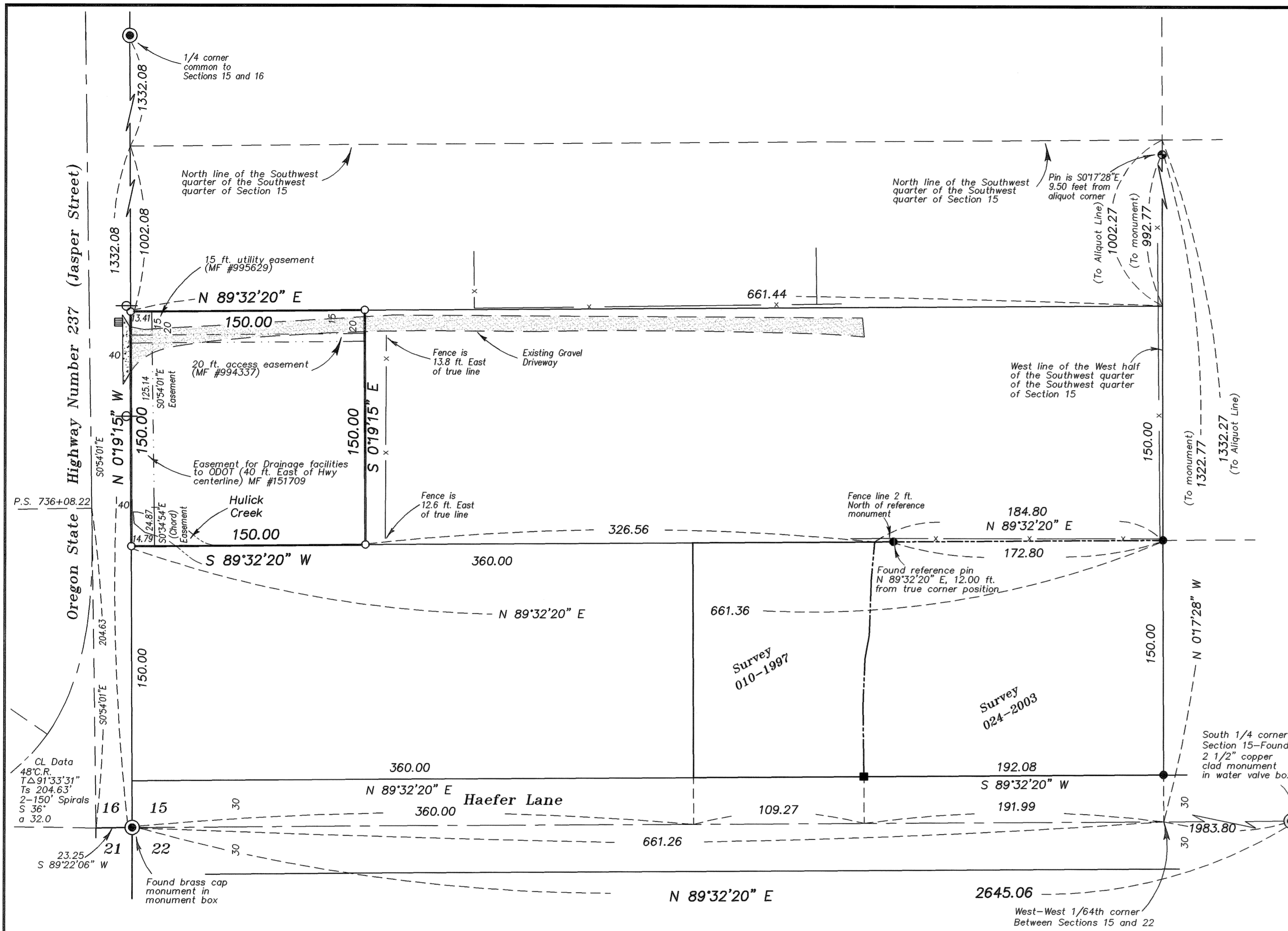
Survey Number 13-62
 Survey Number 140-78
 Survey Number 5-80
 Survey Number 035-1992
 Survey Number 010-1997
 Survey Number 026-1997
 Survey Number 021-1999
 Survey Number 010-2001
 Survey Number 024-2003
 Survey Number 002-2004
 ODOT Drawing Number 10B-4-6

DEED REFERENCES

Volume 126 Page 148	Volume 128 Page 364
Volume 128 Page 419	Volume 130 Page 243
Volume 138 Page 070	Volume 146 Page 374
Microfilm Number 38841	Microfilm Number 65468
Microfilm Number 65469	Microfilm Number 73664
Microfilm Number 80977	Microfilm Number 81720
Microfilm Number 81796	Microfilm Number 88628
Microfilm Number 89088	Microfilm Number 91857
Microfilm Number 92502	Microfilm Number 92503
Microfilm Number 92602	Microfilm Number 92603
Microfilm Number 101019	Microfilm Number 101322
Microfilm Number 101333	Microfilm Number 105390
Microfilm Number 106352	Microfilm Number 108844
Microfilm Number 119648	Microfilm Number 120863
Microfilm Number 122912	Microfilm Number 129137
Microfilm Number 129139	Microfilm Number 135488
Microfilm Number 137501	Microfilm Number 137158
Microfilm Number 139919	Microfilm Number 145807
Microfilm Number 146581	Microfilm Number 148834
Microfilm Number 148835	Microfilm Number 150505
Microfilm Number 155497	Microfilm Number 159730
Microfilm Number 961751	Microfilm Number 973066
Microfilm Number 974467	Microfilm Number 980413
Microfilm Number 983334	Microfilm Number 984582
Microfilm Number 987068	Microfilm Number 994337
Microfilm Number 995229	Microfilm Number 996478
Microfilm Number 20015000	Microfilm Number 20030033
Microfilm Number 20036726	

LEGEND

- Found monument as per Union County monumentation records (2 1/2" aluminum monument unless otherwise noted)
- ⊕ Found 5/8" iron pin with plastic cap marked "BGB SURVEY MARKER" set by survey number 035-1992
- Found 5/8" iron pin with plastic cap marked "LS 1103" set by survey number 010-1997
- Found 5/8" iron pin with plastic cap marked "BGB SURVEY MARKER" set by survey number 024-2003
- Set 5/8"x30" iron pin with plastic cap marked "BGB SURVEY MARKER"
- x- Existing fence line
- .-.- Easement Line
- - - Centerline
- - - Creek or Ditch
- ⊖ Power Pole
- ▭ Catch Basin
- ▨ Gravel Surface
- ▩ Concrete Surface



NARRATIVE

This survey was done at the request of Tony Anderson. The purpose of this survey is to monument the boundary line of the Anderson ownership. As discussed on survey number 002-2004, all of the tracts within the West half of the Southwest quarter of the Southwest quarter of Section 15 were originally transferred by metes and bounds descriptions, beginning at the Southwest quarter of Section 15. The adjacent ownerships East of the West half of the Southwest quarter of the Southwest quarter were all originally described aliquotly. I therefore fix the limits of these tracts at the aliquot lines on the East, West and South. In order to provide harmony and prevent gaps and overlaps between the ownerships, I place the East-West lines in this area parallel with the South line of Section 15, and the North-South lines parallel with the West line of Section 15. The easement for drainage facilities was located by reestablishing the centerline of the State Highway alignment using the information of ODOT Drawing Number 10B-4-6, and placing the easement line 40 feet East of the centerline as per deed microfilm number 151709. I find the existing driveway to encroach South out of the 20 ft. easement as shown. The fence line near the East line of this tract is East of the true property line as shown. I find no other unusual conditions on this survey.

REGISTERED
 PROFESSIONAL
 LAND SURVEYOR

R.G.R.

OREGON
 JULY 17, 1986
 RICK G. ROBINSON
 2219
 Renewal Date: Dec. 31, 2006

UNION COUNTY
 SURVEYOR

Date Received 8-29-06

Date Filed 8/29/06

By *R.G.R.*

File No. 027-2006

BAGETT, GRIFFITH & BLACKMAN
 2006 Adams Avenue, LaGrande, Oregon

Map of Survey
 Tract situated in
 the Southwest quarter of the Southwest quarter of
 Section 15, Township 3 South, Range 40 East
 of the Willamette Meridian.
 UNION COUNTY, OREGON

SURVEYED FOR	Tony Anderson	
SURVEYED BY	R.G.R.	8/06
Scale: 1" = 50'	Drawn by: R.G.R.	8/06

SURVEY NUMBER 027-2006