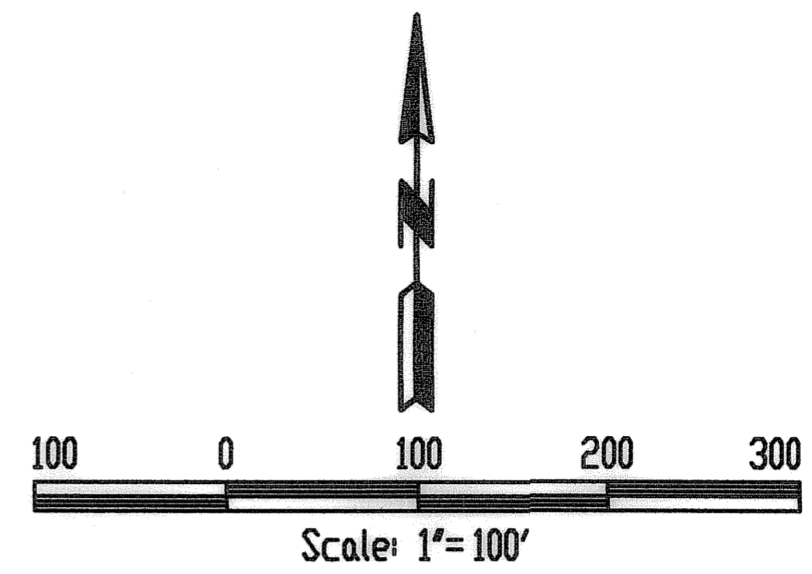
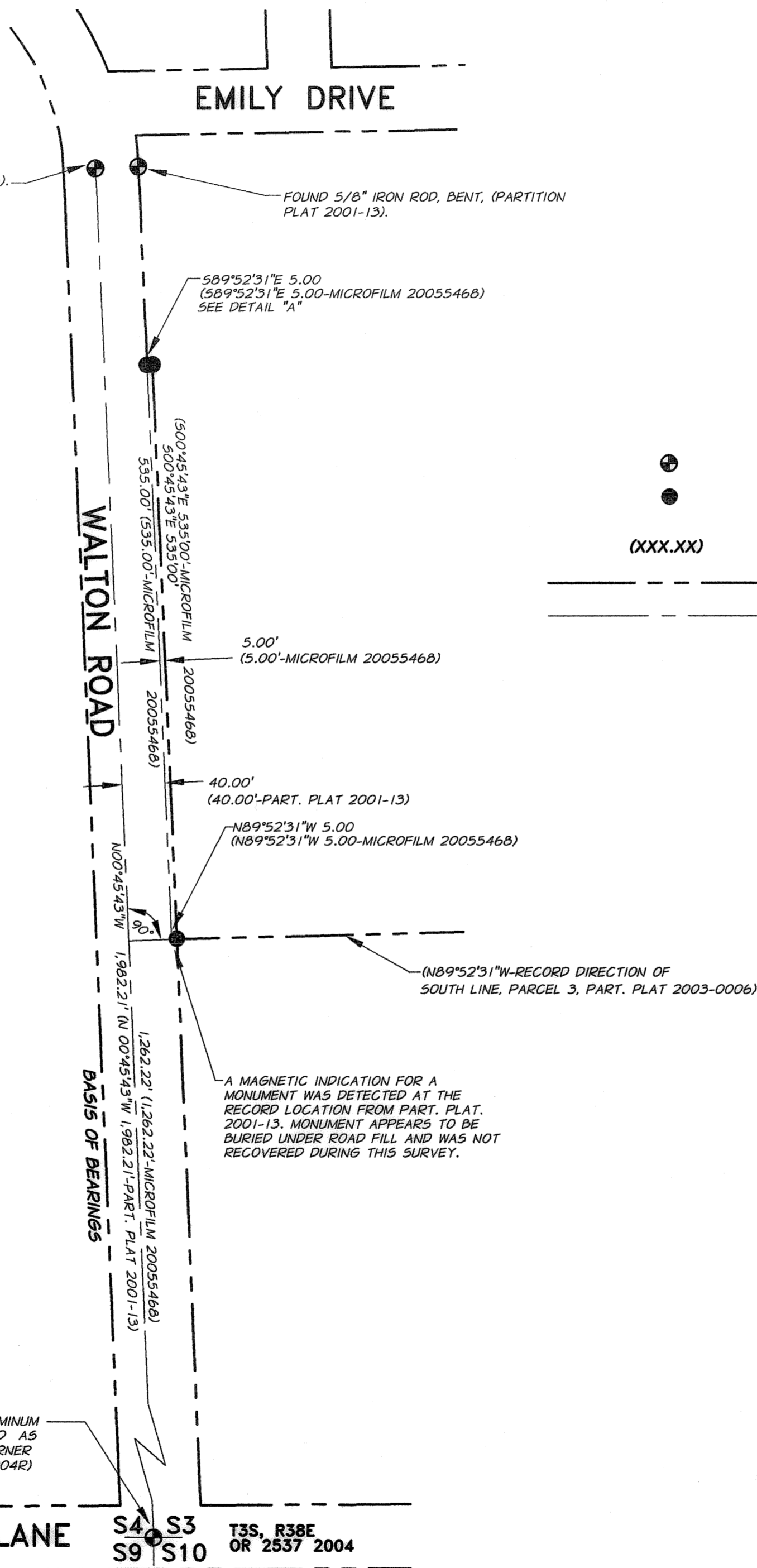


REGISTERED  
PROFESSIONAL  
LAND SURVEYOR  
*Michael B. Posada*  
OREGON  
JANUARY 20, 1988  
MICHAEL B. POSADA  
02849LS  
EXPIRES: 12-31-06

DATED: 12-06-05

FOUND 5/8" IRON ROD WITH ALUMINUM CAP IN MONUMENT CASE, MARKED AS SHOWN (SEE UNION COUNTY CORNER MONUMENTATION RECORD 114-2004R)

BUCHANAN LANE S4 S3 T3S, R38E OR 2537 2004 S9 S10



**BASIS OF BEARINGS**

NO0°45'43"W BETWEEN FOUND MONUMENTS ALONG THE CENTERLINE OF WALTON ROAD, AS SHOWN ON UNION COUNTY MAJOR PARTITION PLAT NO. 2001-13

**LEGEND**

- INDICATES FOUND MONUMENT AS DESCRIBED HEREON
- INDICATES SET 5/8 INCH IRON ROD, 30 INCHES LONG WITH YELLOW PLASTIC CAP, MARKED "APA" ATTACHED
- (XXX.XX) INDICATES RECORD DIMENSION PER THE CITED UNION COUNTY SURVEYOR'S RECORD
- INDICATES ROAD RIGHT-OF-WAY LINE
- INDICATES CENTERLINE OF RIGHT OF WAY

**REFERENCES**


- UNION COUNTY MICROFILM DEED DOCUMENT NO. 20055468
- UNION COUNTY MAJOR PARTITION PLAT NO. 2001-13
- UNION COUNTY MAJOR PARTITION PLAT NO. 2003-0006
- UNION COUNTY CORNER MONUMENTATION RECORD NO. 114-2004R

**SURVEY NARRATIVE**

THIS SURVEY WAS PERFORMED AT THE REQUEST OF UNION COUNTY FOR THE PURPOSE OF MARKING THE LOCATION OF LANDS ACQUIRED BY UNION COUNTY FOR THE WIDENING AND PLACEMENT OF SIDEWALKS ALONG WALTON ROAD. THE LANDS ACQUIRED BY UNION COUNTY AND MARKED BY THIS SURVEY ARE DESCRIBED IN UNION COUNTY DEED MICROFILM DOCUMENT 20055468.

THE LANDS ACQUIRED COMPRISE A PORTION OF PARCEL 3 OF UNION COUNTY MAJOR PARTITION PLAT NO. 2003-0006. THIS PARTITION PLAT, ALONG WITH THE ADDITIONAL REFERENCE DOCUMENTS IDENTIFIED ABOVE AND THE SURVEY MONUMENTS FOUND AND DESCRIBED HEREON, WERE USED TO ESTABLISH THE LOCATIONS OF THE PARCEL SHOWN ON THIS SURVEY MAP.

**MAP OF SURVEY**  
OF LANDS IN PARCEL 3 OF UNION COUNTY MAJOR PARTITION NO. 2003-0006  
IN THE WEST 1/2 OF THE SW 1/4, SEC. 3, T.35., R.38E. W.M., UNION COUNTY, OREGON

UNION COUNTY	1106 K AVENUE LA GRANDE, OR. 97850
SCALE: 1" = 100'	SHEET
DATE: DEC., 2005	<b>1/1</b>
JOB NO. 693-09 (210)	 <small>ENGINEERING - SURVEYING - MATERIALS TESTING LA GRANDE, OR. WALLA WALLA, WA.</small>

SURVEY NUMBER 002-2006