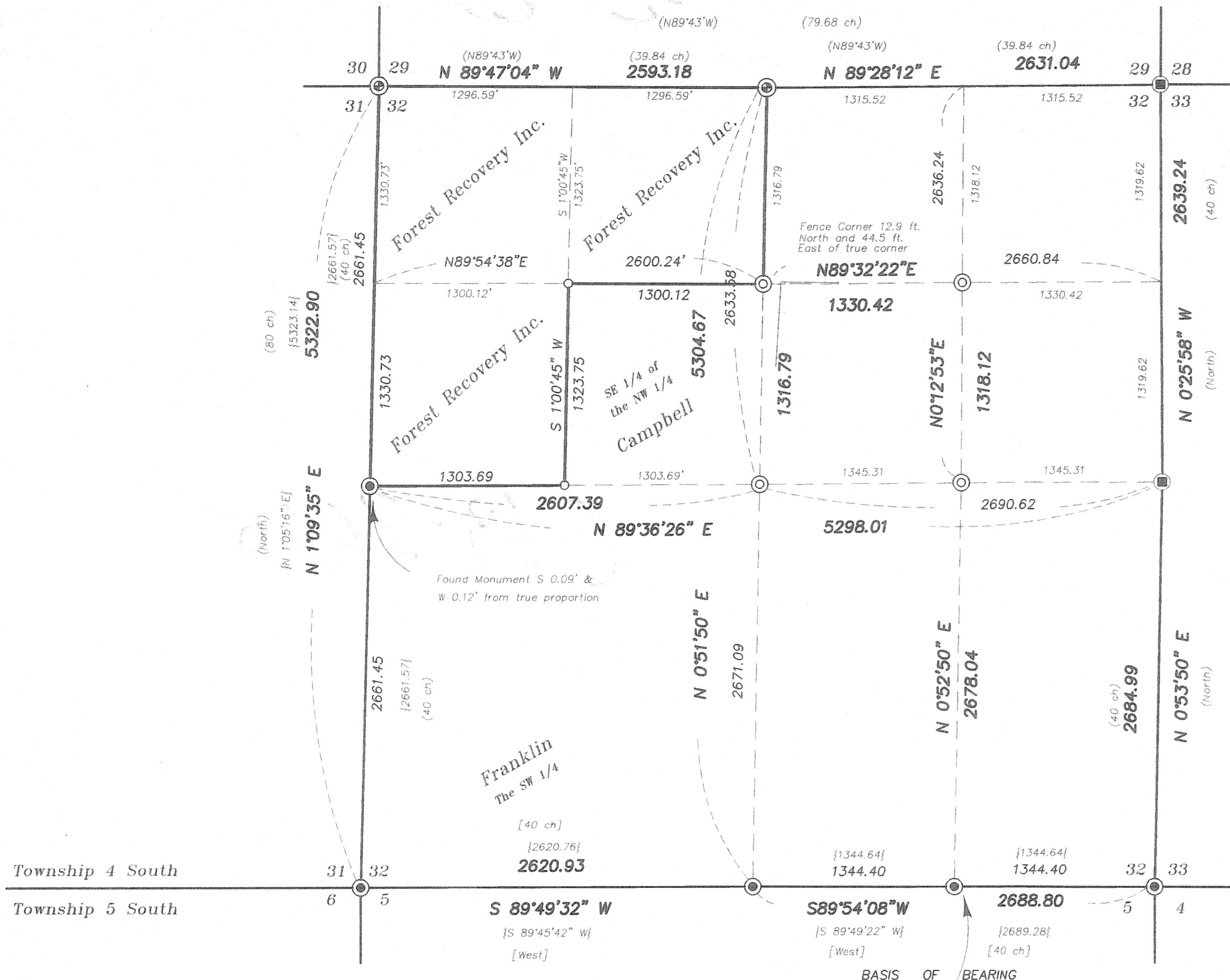
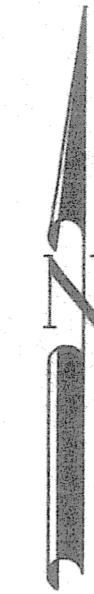


BASIS OF BEARING

Forward bearing from the Southeast corner of Section 32 to the South quarter corner of Section 32 being South 89°54'08" West, based on GPS Observations (WGS 84 Datum)



REFERENCE MATERIAL

Original GLO Contract Number 102 by Timothy W. Davenport dated July 20, 1863

Original GLO Contract Number 388 by W.B. Barr dated May 7, 1881

Union County monumentation records
 Survey Number 48-80
 Survey Number 020-2003
 Survey Number 028-2003

Deed Microfilm Number 135588

LEGEND

- ⊙ Found 2 1/2" brass cap monument set by survey number 48-80
- ⊠ Found 2 1/2" aluminum monument as per Union County Monumentation records
- ⊕ Found 3" brass cap monument as per Union County Monumentation records
- ⊙ Found 5/8" iron pin with 2 1/2" aluminum cap set by Survey Number 020-2003
- Set 5/8"x30" iron pin with 2 1/2" Aluminum cap marked "BAGETT-GRIFFITH & BLACKMAN"
- x- Existing fence line
- [] Record information of GLO Contract Number 102 (Davenport)
- () Record information of GLO Contract Number 388 (Barr)
- { } Record information of Survey Number 48-80

NARRATIVE

This survey was ordered by Dick Granger on behalf of Forest Recovery Incorporated. Mr. Granger instructed us to survey and set the controlling corners for the East line of the Southwest Quarter of the Northwest Quarter, and the South line of the Northeast Quarter of the Northwest Quarter of Section 32, Township 4 South, Range 38 East. I find that Survey Number 020-2003 set the exterior of the Northwest Quarter of Section 32. I found the corners as shown on the survey and accept the positions of the controlling corners. I then compute the positions of the North 1/16 between Sections 31 and 32, the West 1/16 between Sections 29 and 32, the Center North 1/16 and the Center West 1/16 of Section 32 by single proportion and midway between the controlling corners, in order to establish the NW 1/16 corner position. I drive a straight line Westerly, from the Center North 1/16 to the North 1/16 corner between Sections 31 and 32, and drive a straight line Northerly from the Center West 1/16 to the West 1/16 corner between Sections 29 and 32, and place the Northwest 1/16 corner at the intersect of the two lines. I find no unusual conditions with this survey.

Found monument 0.37 ft. South and 0.29 ft. West of true proportionate position

REGISTERED
**PROFESSIONAL
 LAND SURVEYOR**

 OREGON
 JULY 13, 1973
GREGORY T. BLACKMAN
 991
 Renewal Date: Dec. 31, 2005

UNION COUNTY
 SURVEYOR
 Date Received 6/24/05
 Date Filed 6/27/05
 By R. Robinson, Deputy
 File No. 013-2005

BAGETT, GRIFFITH & BLACKMAN
 2006 Adams Avenue, LaGrande, Oregon
 Map of Survey
 Situated in the Northwest Quarter of Section 32, Township 4 South, Range 38 East of the Willamette Meridian.
 UNION COUNTY, OREGON

| | | |
|---------------------|------------------|--------|
| SURVEYED FOR | Dick Granger | |
| SURVEYED BY | G.T.B. | 6/2005 |
| Scale: 1" = 600 ft. | Drawn by: G.T.B. | 6/2005 |

SURVEY NUMBER 013-2005