

BASIS OF BEARING

Solar observation taken at the corner common to Sections 5 and 8, Township 2 South, Range 40 East of the Willamette Meridian.



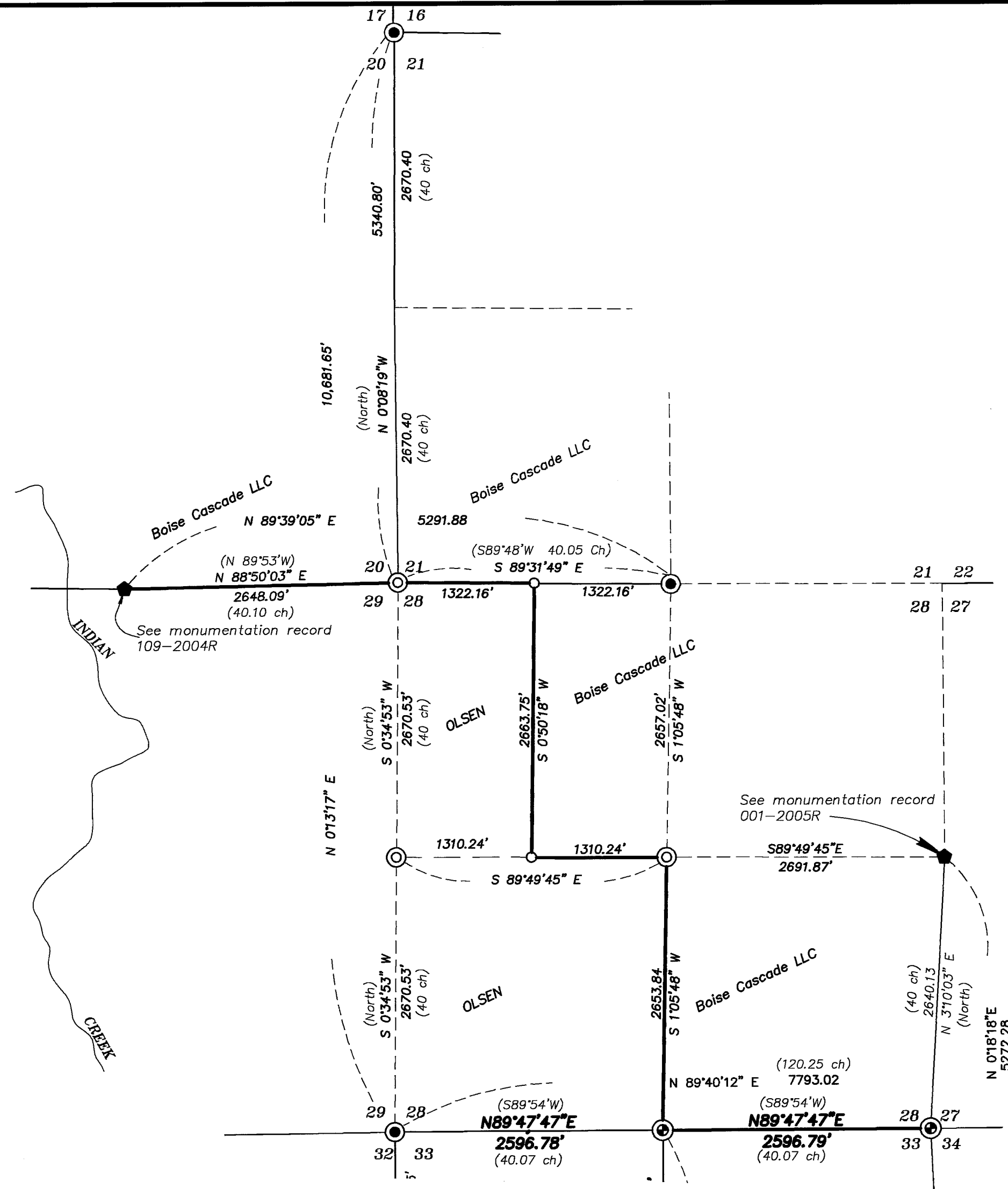
SCALE: 1" = 1000'

LEGEND

- ⊙ Found 2 1/2" Aluminum cap, set by Survey number 039-2004, see Union County remonumentation records.
- ⊙ Found 2 1/2" x 30 Brass Cap set by B.L.M., unless otherwise noted. See Union County remonumentation records.
- ◆ Found Original corner evidence, remonumented by Union County Surveyor, see Union County monumentation records.
- Set 5/8"x30" iron pin with 2 1/2" Aluminum cap, as per Union County Remonumentation records.
- () GLO Record bearing and distance

REFERENCE MATERIAL

- Original GLO Contract Number 450 by Henry Meldrum, dated 1883
- Original GLO Contract Number 102 by Timothy Davenport 1864
- Union County monumentation records
 - Survey Number 37-86
 - Survey Number 57-81
 - Survey Number 043-1998
 - Survey Number 039-2004
- Monumentation Record 109-2004R
- Monumentation Record 001-2005R



NARRATIVE

This survey was ordered by Chuck Gambill on behalf of Boise Cascade LLC for the purpose of marking and defining the boundary between the Olsen property and Boise Cascade LLC. I found monumented corners at the Southwest corner, the South 1/4 corner and at the Southeast Corner of Section 28 that were set by survey Number 039-2004, and accept the positions. I found the East Quarter corner was monumented from original evidence by the County Surveyor, (see monumentation record number 001-2005R). The Quarter corner between Sections 20 and 29 was monumented from original evidence by the county surveyor, (see monumentation record 002-2005R). I found the North quarter corner of Section 28 in place, as was the Northwest corner of Section 21. The Northwest corner of Section 28 fell in a very heavily logged area destroying all evidence of the original corner. I searched for the West 1/4 corner of Section 21, as well as the West quarter corner of Section 28, but both positions were very heavily logged and all evidence was lost. I therefore proportioned the Northwest Corner of Section 28 into place by standard double proportion methods. I then proportioned the West Quarter corner of Section 28 into position by single proportion methods. The center quarter corner was established on the intersect of a straight line from the North Quarter Corner to the South Quarter Corner, and a straight line from the East Quarter Corner to the West Quarter Corner of Section 28 as per BLM Manual of Instructions. This survey was in preparation for logging against the lines established by this survey. Our instructions were to establish the proper corners and the lines between the true corners would be marked by Boise Cascade LLC personnel. I find no unusual conditions with this survey.

UNION COUNTY SURVEYOR

Date Received 1-31-05

Date Filed 1-31-05

By R. Robinson, Deputy

File No. 042-2004

REGISTERED PROFESSIONAL LAND SURVEYOR

GREGORY T. BLACKMAN

JULY 13, 1973

991

Renewal Date: Dec. 31, 2005

BAGETT, GRIFFITH & BLACKMAN

2006 Adams Avenue, LaGrande, Oregon

Map of Survey Situate in Section 28, Township 1 South, Range 40 East of the Willamette Meridian

Union County, Oregon

SURVEYED FOR	BOISE CASCADE LLC	
SURVEYED BY	GTB	11/01/04
Scale: 1"=1000 ft.	Drawn by: GTB	12/30/2004

Survey Number 042-2004