

LEGEND

- Found 5/8" iron pin with plastic cap marked "BCA SURVEY MARKER" as per Union County monumentation records
- ⊙ Found 2 1/2" aluminum monument for Witness corner as per Union County monumentation records
- ▲ Found 5/8" iron pin with plastic cap marked "BCA SURVEY MARKER" Set by Minor Partition Plat Number 1992-15
- Found 5/8" iron pin with plastic cap marked "BCB SURVEY MARKER" Set by Minor Partition Plat Number 1997-15
- ⊙ Found 5/8" iron pin with plastic cap marked "BGB SURVEY MARKER" Set by Survey Number 038-1998
- Found 5/8" iron pin with plastic cap marked "BGB SURVEY MARKER" Set by Minor Partition Plat Number 2002-09
- Found 5/8" iron pin with plastic cap marked "BGB SURVEY MARKER" Set by Major Partition Plat Number 2002-010
- Set 5/8"x30" iron pin with plastic cap marked "BGB SURVEY MARKER"
- () Record bearing of Major Partition Plat Number 2002-010
- Easement Line
- Centerline
- x- Existing fence line

NARRATIVE

This survey was done at the request of Tina Hurst. The purpose of this survey is to monument a lot line adjustment with the adjacent tract of land to the North. Both tracts are parcels of a partition. The Hurst ownership is Parcel 2 of Minor Partition Plat Number 1997-15, and the adjacent tract to the North (Murchison) is Parcel 2 of Major Partition Plat Number 2002-010. I base the location of the tracts on the two partitions. Please note that there is a difference in the basis of bearing between the two partitions. I have rotated the bearings of Major Partition Number 2002-010 to match Minor Partition Plat Number 1997-15, which I use as the basis for this survey. The location of the adjusted line was pointed out on the ground by Ms. Hurst. I find no unusual conditions on this survey.

REGISTERED
PROFESSIONAL
LAND SURVEYOR

Rick G. Robinson

OREGON
JULY 17, 1988
RICK G. ROBINSON
2219
Renewal Date: Dec. 31, 2006

BASIS OF BEARING

Solar observation taken at the Southwest corner of Section 15, Township 3 South, Range 40 East of the Willamette Meridian.

SCALE: 1"=200'

REFERENCE MATERIAL

Union County Monumentation Records
Survey Number 038-1998
Minor Partition Plat Number 1992-15
Minor Partition Plat Number 1997-15
Minor Partition Plat Number 2002-09
Major Partition Plat Number 2002-010

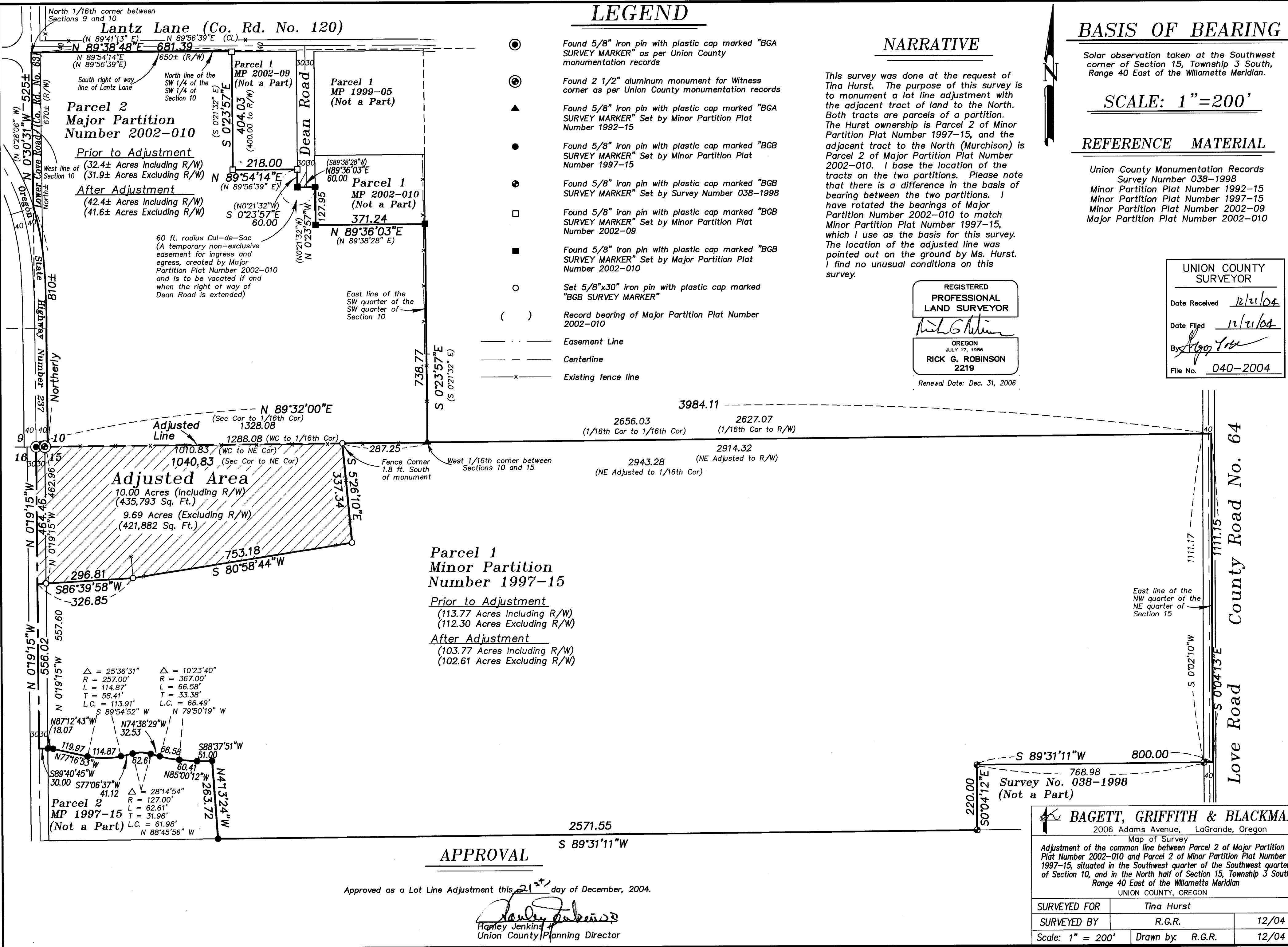
UNION COUNTY
SURVEYOR

Date Received 12/21/04

Date Filed 12/21/04

By *Rick G. Robinson*

File No. 040-2004



**Parcel 1
Minor Partition
Number 1997-15**

Prior to Adjustment
(113.77 Acres Including R/W)
(112.30 Acres Excluding R/W)

After Adjustment
(103.77 Acres Including R/W)
(102.61 Acres Excluding R/W)

APPROVAL

Approved as a Lot Line Adjustment this 21st day of December, 2004.

Randy Jenkins
Randy Jenkins
Union County Planning Director

BAGETT, GRIFFITH & BLACKMAN
2006 Adams Avenue, LaGrande, Oregon

Map of Survey
Adjustment of the common line between Parcel 2 of Major Partition Plat Number 2002-010 and Parcel 2 of Minor Partition Plat Number 1997-15, situated in the Southwest quarter of the Southwest quarter of Section 10, and in the North half of Section 15, Township 3 South, Range 40 East of the Willamette Meridian
UNION COUNTY, OREGON

SURVEYED FOR	Tina Hurst	
SURVEYED BY	R.G.R.	12/04
Scale: 1" = 200'	Drawn by: R.G.R.	12/04

SURVEY NUMBER 040-2004