

BASIS OF BEARING

Solar observation taken at the corner common to Sections 5 and 8, Township 2 South, Range 40 East of the Willamette Meridian.



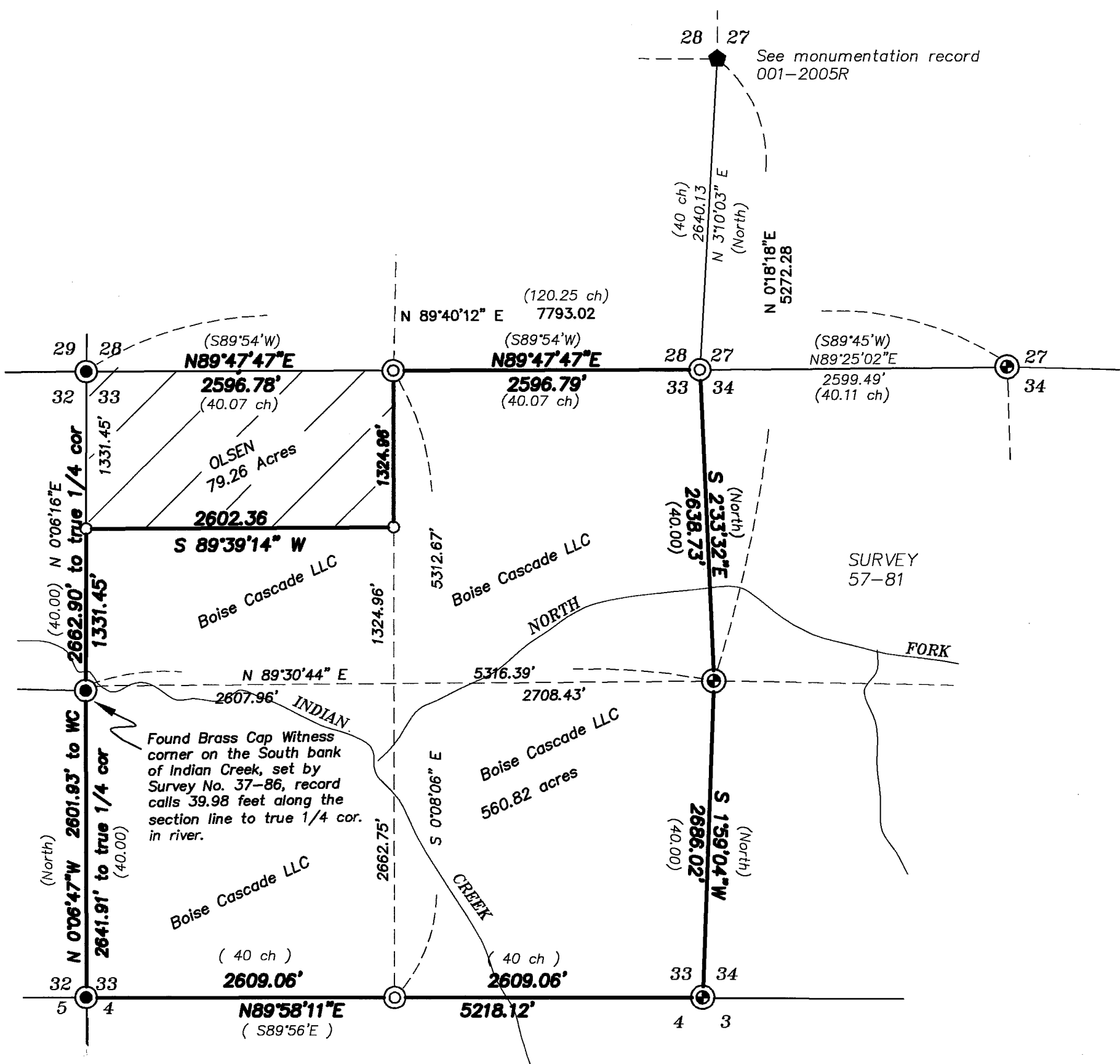
SCALE: 1" = 1000'

LEGEND

- ⊙ Found 2 1/2" Brass Cap, set by Survey number 57-81, see Union County remonumentation records.
- ⊙ Found 2 1/2" x 30 Brass Cap set by B.L.M., unless otherwise noted. See Union County remonumentation records.
- ◆ Found Original corner evidence, remonumented by Union County Surveyor, see Union County monumentation records.
- Set 5/8"x30" iron pin with 2 1/2" Aluminum cap
- () GLO Record bearing and distance

REFERENCE MATERIAL

- Original GLO Contract Number 450 by Henry Meldrum, dated 1883
- Original GLO Contract Number 102 by Timothy Davenport 1864
- Union County monumentation records Survey Number 37-86
- Survey Number 57-81
- Survey Number 043-1998
- Monumentation Record 001-2005R



NARRATIVE

This survey was ordered by Chuck Gambill on behalf of Boise Cascade LLC for the purpose of marking and defining the boundary between the Olsen property and Boise Cascade LLC. I find that three controlling corners of Section 33 were missing. The Northeast, and the North and South 1/4 corners had been destroyed by logging operations. I find in the corner records of the Union County Surveyor a letter dated November 17, 1982 stating that the BLM had monumented the Northwest Corner, the North 1/4 corner and the Southwest corner of Section 33 without survey. I find brass caps at the Northwest Corner and the Southwest corner, however I find nothing at the North 1/4 corner of Section 33. I found a fence post set by the BLM, and what appeared to be a bearing tree with the blaze healed over at the North 1/4 corner of Section 33. I opened the tree to find only a blaze and no scribing. I contacted the BLM office in Baker City, to obtain the recovery records, only to find that they had done the work with transit and chain, however no record was in the files. It is my belief that they had originally intended to monument this corner and had prepared the tree but found that there was a problem with the dimensions and did not set the corner. The West quarter corner of Section 28 was monumented from original evidence by the Union County Surveyor, and I found the North 1/4 corner of Section 34 to be monumented by others from original evidence. The 1/4 corner between Sections 27 and 28 is an aluminum cap set by the County Surveyor from original evidence. I find that the original GLO survey is rather rough along the East line of Section 33. I suspect that the reason is that the terrain is steep and rough making surveying difficult. I proportion the Northeast corner of Section 33 into position by double proportion as per 1973 BLM Manual, and proportion the North 1/4 corner into position by the standard single proportion as per the BLM Manual. The South 1/4 corner was proportioned into position by single proportion. This area was clear cut and had very few trees left, and there was no sign of the original corner.

UNION COUNTY SURVEYOR

Date Received 1-31-05

Date Filed 1-31-05

By R. Robinson Deputy

File No. 039-2004

REGISTERED PROFESSIONAL LAND SURVEYOR

GREGORY T. BLACKMAN

OREGON JULY 13, 1973

991

Renewal Date: Dec. 31, 2005

BAGETT, GRIFFITH & BLACKMAN

2006 Adams Avenue, LaGrande, Oregon

Map of Survey Situate in Section 33, Township 1 South, Range 40 East of the Willamette Meridian

Union County, Oregon

SURVEYED FOR	BOISE CASCADE LLC
SURVEYED BY	GTB 11/01/04
Scale: 1"=1000 ft.	Drawn by: GTB 12/02/2004

Survey Number 039-2004