

NARRATIVE OF SURVEY

This survey was performed at the request of Mr. Richard Snow. The purpose of the survey was to establish the boundary between his lands and the lands of Mr. Ted Atkinson as shown on Sheet 2 of this map and also to show the relationship of both the existing fence and old fence locations with respect to the survey. For the section subdivisions and fence locations see sheet 2 of this map.

The survey lies in two townships, Township 3 South, Range 37 East was surveyed by Herman D. Graddon in 1882. Mr. Graddon noted a discrepancy in the original survey of the north line of Section 32, R37E, and established a second set of corners by running along the township line on which to close the Township line.

There are several factors that have affected the original survey evidence in this area. The original survey evidence shows that the original survey of the township line was not a straight line but was a series of stumps that were cut by the original surveyors. This area has been extensively logged. I have been able to distinguish at least three different ages of stumps. I estimate the oldest stumps to have been logged in the early 1900's based on the small amount of overgrowth over the stumps and the fact that they were cut by axes. The stumps in the area were pushed up by machinery and are full of dirt and many of the old stumps. There are also records of several prior corner searches in this area which affected different areas. Mr. Odeil's project in T3S, R37E, As stated above, Mr. Graddon had retraced the south Township line in T3S, R37E, record survey R12 retraced the north Township line of T3S, R37E and shows it to be 519.78 feet longer than record survey R9. Record survey R9 shows the west Township line to be 519.78 feet longer than record survey R12. The measurement of two lines through the township north to south show that the Township is longer than record by lengths of 729 and 772 feet respectively. These measurements indicate that Mr. Odeil was approximately 1 chain long per half mile of line run. This is in agreement with actual monuments remaining in the area.

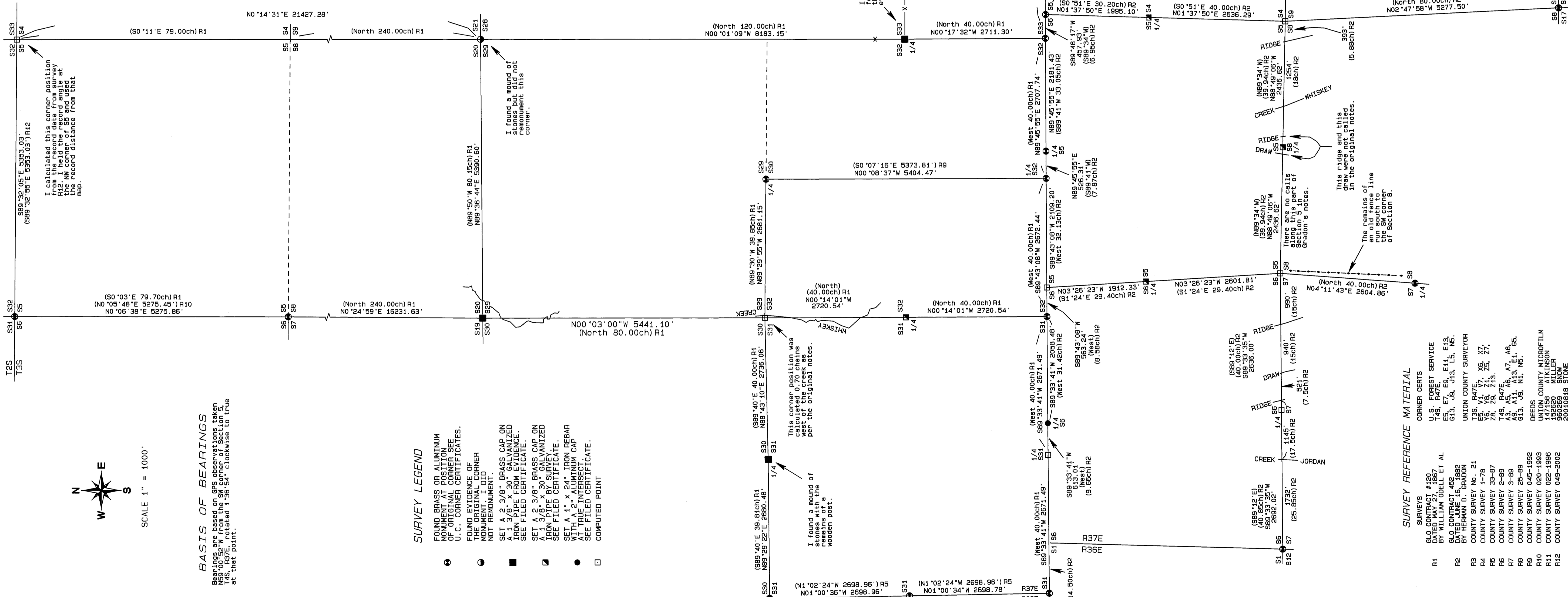
Mr. Graddon's survey was based on the north Township line of T3S, R37E and South. I determined that the size and age of trees along Whiskey Creek indicate that the creek has not moved since the original survey. I believe that the creek has moved since the original survey. I reestablished the South and East 1/4 corners of Section 31, T3S, R37E, at midpoint on their respective lines as per the original record. Survey R9 shows an erroneous position for the south 1/4 corner of Section 32, T3S, R37E. This has been confirmed by planimetry of the original survey evidence.

The second part of this survey involved the retracement of Mr. Graddon's work in T4S, R37E. In Record Survey R6, Mr. Bill Wells states that he believes that Mr. Graddon was "stubbing" his corners. This was a common practice. Mr. Wells' survey shows a significant departure from the record survey of Section 18 T4S, R37E. In record survey R6, Mr. Greg Blackburn also found that Mr. Graddon was stubbing his corners. His survey shows serious deviations from the record dimensions on both North - South and East - West lines. In this survey of T4S, R37E, I also find that Mr. Graddon failed to establish the South side of Section 5. The original survey shows a significant ridge top and a draw along the south side of Section 5 are not called and there is a 470' discrepancy between Graddon's record and the original survey. The original survey shows a significant ridge on the South side of Section 5 and the north and east lines of Section 5 by proportioning the North and South corners of Section 5. I calculated both the Southeast and Southwest corners of Section 5 by proportioning the North and South corners of Section 5. I calculated the Easting coordinate. Section 5 is a 1/4 corner but I cannot prove that he ran from one side of the other because of the missing topographic calls on the South line of Section 5. I therefore replaced that corner at the record location. The corner of Section 4 and the Southwest corner of Section 8 which indicate that at least some of the older fences in this area were placed with knowledge of the original corner locations.

This survey was performed using a combination of GPS and traditional surveying methods. The GPS data was used to establish the monument locations and the traditional surveying methods were used to establish the monument locations and the fence line. The GPS data was used to establish the monument locations and the traditional surveying methods were used to establish the monument locations and the fence line. The GPS data was used to establish the monument locations and the traditional surveying methods were used to establish the monument locations and the fence line.

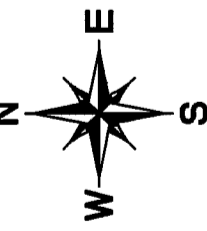
I held the existing fence corners as the best available evidence. For a detail in connection, see Sheet 2. This measured distance is not the original closing corner. I found the monument at the North 1/4 corner of section 12 in connection, see Sheet 2. I computed this corner location at record bearing and distance from the record map. This position was not the original corner location because of the proximity of the monument to the original corner location.

This survey was performed using a combination of GPS and traditional surveying methods. The GPS data was used to establish the monument locations and the traditional surveying methods were used to establish the monument locations and the fence line. The GPS data was used to establish the monument locations and the traditional surveying methods were used to establish the monument locations and the fence line.



BASIS OF BEARINGS

Bearings are based on GPS observations taken in T3S, R37E, related to true north clockwise to true at that point.



SCALE 1" = 1000'

SURVEY LEGEND

- FOUND BRASS OR ALUMINUM MONUMENT AT POSITION OF ORIGINAL CORNER SEE U.C. CORNER CERTIFICATE.
- FOUND EVIDENCE CORNER MONUMENT, I.D.D. NOT REMOVED.
- SET A 2 3/8" BRASS CAP ON TOP OF 3" X 3" GALVANIZED IRON PIPE SURVEY. SEE FILED CERTIFICATE.
- ▲ SET A 2 3/8" BRASS CAP ON IRON PIPE SURVEY. SEE FILED CERTIFICATE.
- WITH A 2" X ALUMINUM CAP AT TRUE INTERSECT. SEE FILED CERTIFICATE.
- COMPUTED POINT

UNION COUNTY SURVEYOR
Date Received 10-15-2004
Date Filed 10-15-2004
By R. Robinson Deputy
File No. 032-2004

REGISTERED PROFESSIONAL LAND SURVEYOR
Stephen K. Haddock
OREGON JULY 9, 2001 STEPHEN K. HADDOCK 56298LS
RENEWS 6-30-05

SURVEY FOR
Mr. Richard Snow
33263 Oregon Trail Road
Echo, OR 97826
LOCATION: T3S & T4S, R37E, W.M., Union County, Oregon.

PROJECT No. 2004 - 10 SCALE 1" = 600'
MONUMENTS SET: August 23 - September 3, 2004.
WITNESS TREE SURVEYING
Stephen K. Haddock, PLS
P.O. Box 6
Pilot Rock, Oregon 97868
(541) 443-2922

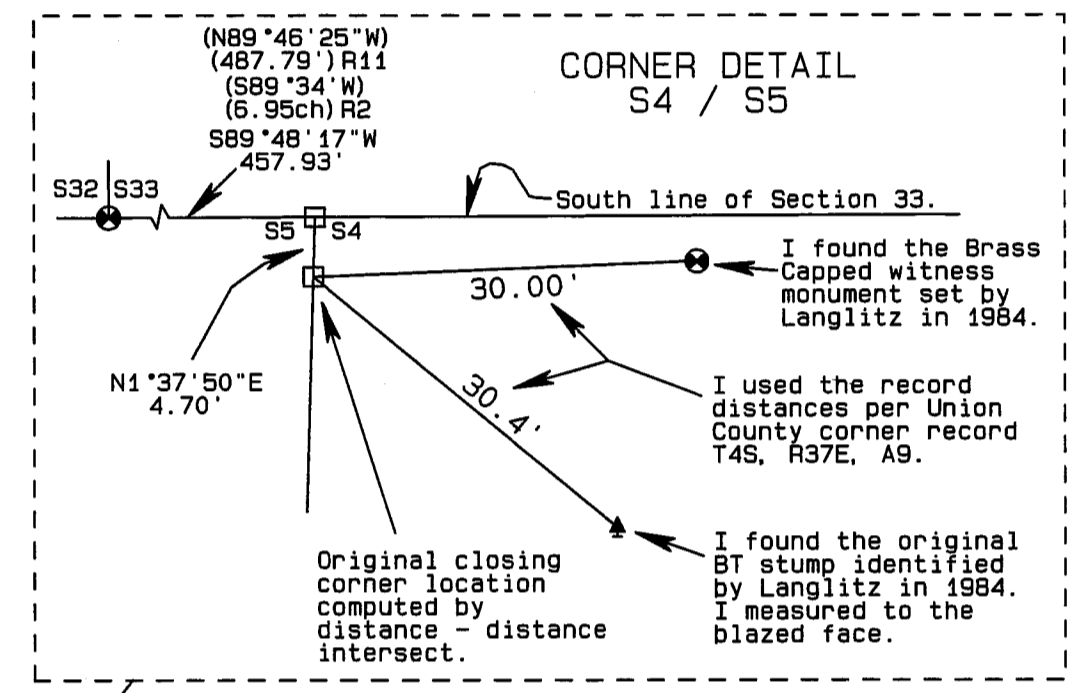
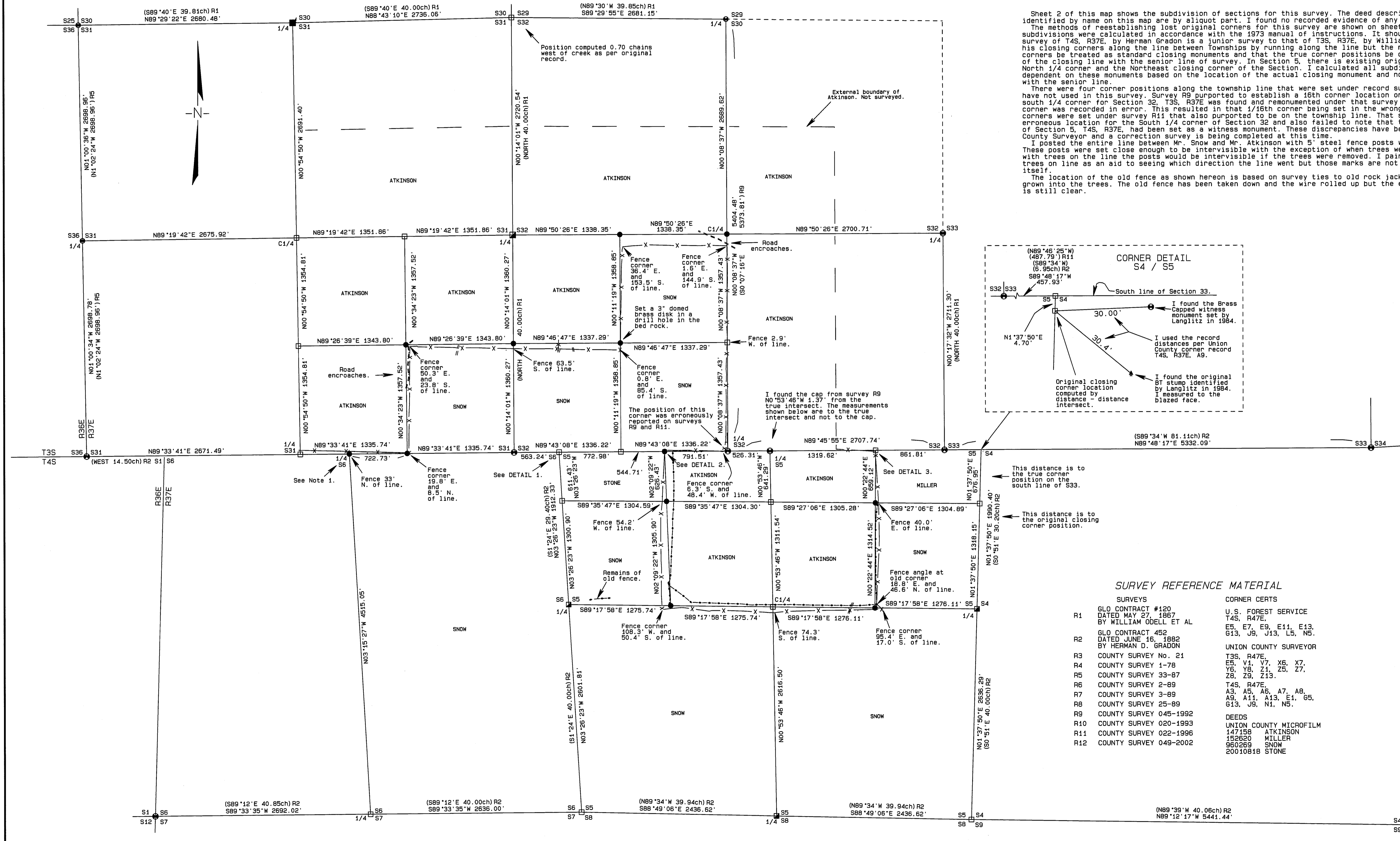
SURVEY NARRATIVE SHEET 2

Sheet 2 of this map shows the subdivision of sections for this survey. The deed descriptions for all ownerships identified by name on this map are by aliquot part. I found no recorded evidence of any boundary agreements. The methods of reestablishing lost original corners for this survey are shown on sheet 1 of this map. The section subdivisions were calculated in accordance with the 1973 manual of instructions. It should be noted that the survey of T4S, R37E, by Herman Gradon is a junior survey to that of T3S, R37E, by William Odell. Mr. Gradon set his closing corners along the line between Townships by running along the line but the manual directs that these corners be treated as standard closing monuments and that the true corner positions be calculated at the intersect of the closing line with the senior line of survey. In Section 5, there is existing original evidence for the North 1/4 corner and the Northeast closing corner of the Section. I calculated all subdivision positions that were dependent on these monuments based on the location of the actual closing monument and not on the point of intersect with the senior line.

There were four corner positions along the township line that were set under record surveys R9 and R11 that I have not used in this survey. Survey R9 purported to establish a 16th corner location on the township line. The south 1/4 corner for Section 32, T3S, R37E was found and re-monumented under that survey but the location of that corner was recorded in error. This resulted in that 1/16th corner being set in the wrong position. Three additional corners were set under survey R11 that also purported to be on the township line. That survey incorporated the same erroneous location for the South 1/4 corner of Section 32 and also failed to note that the monument at the NE corner of Section 5, T4S, R37E, had been set as a witness monument. These discrepancies have been confirmed by the Union County Surveyor and a connection survey is being completed at this time.

I posted the entire line between Mr. Snow and Mr. Atkinson with 5" steel fence posts with the tops painted orange. These posts were set close enough to be inter-visible with the exception of when trees were on the line. In places with trees on the line the posts would be inter-visible if the trees were removed. I painted an orange line on the trees on line as an aid to seeing which direction the line went but those marks are not necessarily on the line itself.

The location of the old fence as shown hereon is based on survey ties to old rock jacks and bits of fence wire grown into the trees. The old fence has been taken down and the wire rolled up but the evidence of its location is still clear.



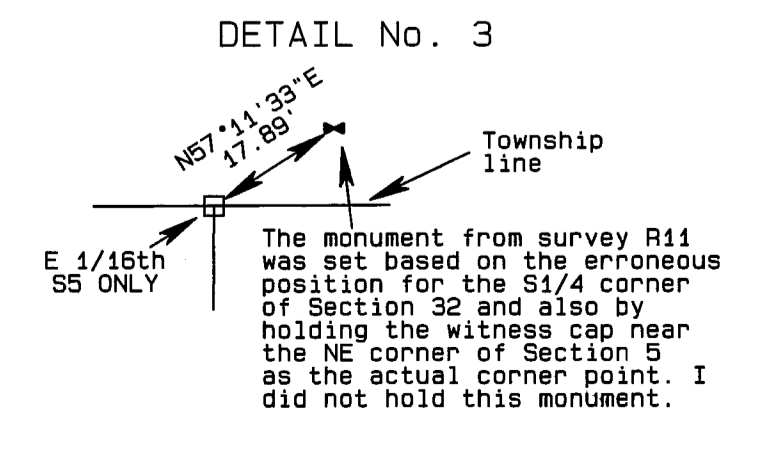
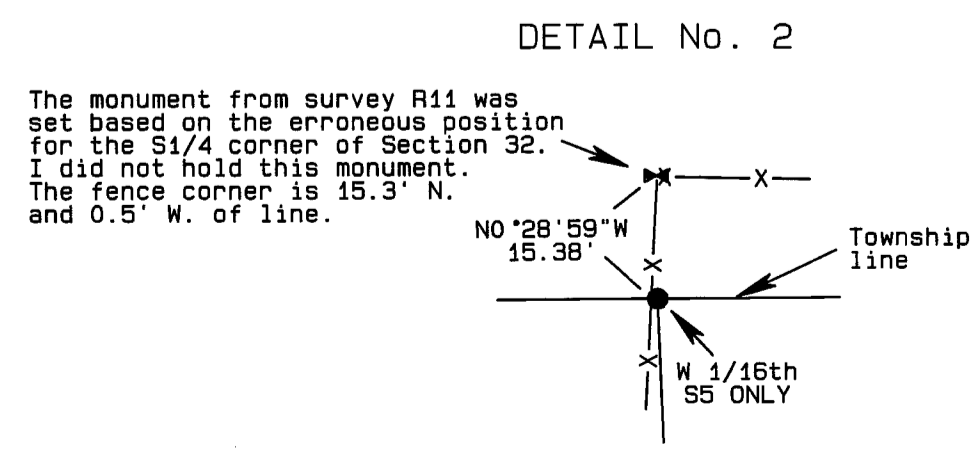
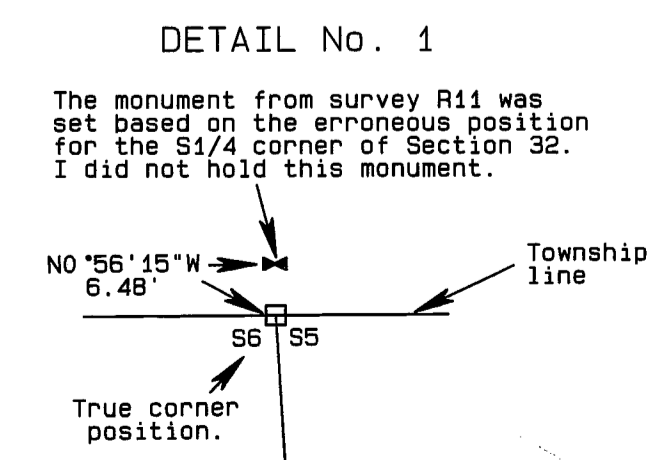
SURVEY REFERENCE MATERIAL

SURVEYS	CORNER CERTS
R1 GLO CONTRACT #120 DATED MAY 27, 1867 BY WILLIAM ODELL ET AL	U.S. FOREST SERVICE T4S, R47E
R2 GLO CONTRACT 452 DATED JUNE 16, 1882 BY HERMAN D. GRADON	E5, E7, E9, E11, E13, G13, J9, J13, L5, N5.
R3 COUNTY SURVEY No. 21	UNION COUNTY SURVEYOR T3S, R47E
R4 COUNTY SURVEY 1-78	E5, V1, V7, X6, X7, Y6, Y8, Z1, Z5, Z7, Z8, Z9, Z13.
R5 COUNTY SURVEY 33-87	T4S, R47E
R6 COUNTY SURVEY 2-89	A3, A5, A6, A7, A8, A9, A11, A13, E1, G5, G13, J9, N1, N5.
R7 COUNTY SURVEY 3-89	DEEDS
R8 COUNTY SURVEY 25-89	UNION COUNTY MICROFILM 147158 ATKINSON 152520 MILLER 950259 SNOW 20010818 STONE
R9 COUNTY SURVEY 045-1992	
R10 COUNTY SURVEY 020-1993	
R11 COUNTY SURVEY 022-1996	
R12 COUNTY SURVEY 049-2002	

LEGEND

- FOUND BRASS OR ALUMINUM MONUMENT AT POSITION OF ORIGINAL CORNER FROM PRIOR SURVEYS
- SET A 1" x 24" IRON REBAR W/ A 2" ALUMINUM CAP. SEE FILED CERTIFICATE.
- ⊕ PREVIOUS MONUMENT NOT HELD. SEE THE DETAILS.
- SET A 2 3/8" BRASS CAP ON A 1 3/8" x 30" GALVANIZED IRON PIPE BY SURVEY. SEE FILED CERTIFICATE.
- SET A 2 3/8" BRASS CAP ON A 1 3/8" x 30" GALVANIZED IRON PIPE FROM EVIDENCE. SEE FILED CERTIFICATE.
- COMPUTED POINT
- OLD FENCE LOCATION
- x- CURRENT FENCE LOCATION

PREVIOUS MONUMENT DETAILS



BASIS OF BEARINGS

Bearings are based on GPS observations taken N59°00'52"W, 1392.19' from the SW corner of Section 5 and rotated 1°36'54" clockwise to true at that point.

UNION COUNTY SURVEYOR

Date Received 10-15-2004

Date Filed 10-15-2004

By R. ROBINSON DEATY

File No. 032-2004

REGISTERED PROFESSIONAL LAND SURVEYOR

Stephen K. Haddock

OREGON JULY 9, 2001

STEPHEN K. HADDOCK 58289LS

RENEWS 6-30-05

SURVEY FOR

Mr. Richard Snow

33263 Oregon Trail Road

Echo, OR 97826

LOCATION: S31, S32 & S5, T3S & T4S, R37E, W.M., Union County, Oregon.

SHEET 2 OF 2

PROJECT No. 2004 - 10

SCALE 1" = 600'

MONUMENTS SET: August 23 - September 3, 2004.

WITNESS TREE SURVEYING

Stephen K. Haddock, PLS

P.O. Box 6

Pilot Rock, Oregon 97868

(541) 443-2922

032-2004