

# BASIS OF BEARING

Forward bearing as published by the U.S.C. and G.S. from  $\Delta$  COLLEGE to  $\Delta$  VALLEY Dated 1946.

SCALE: 1"=60'

## REFERENCE MATERIAL

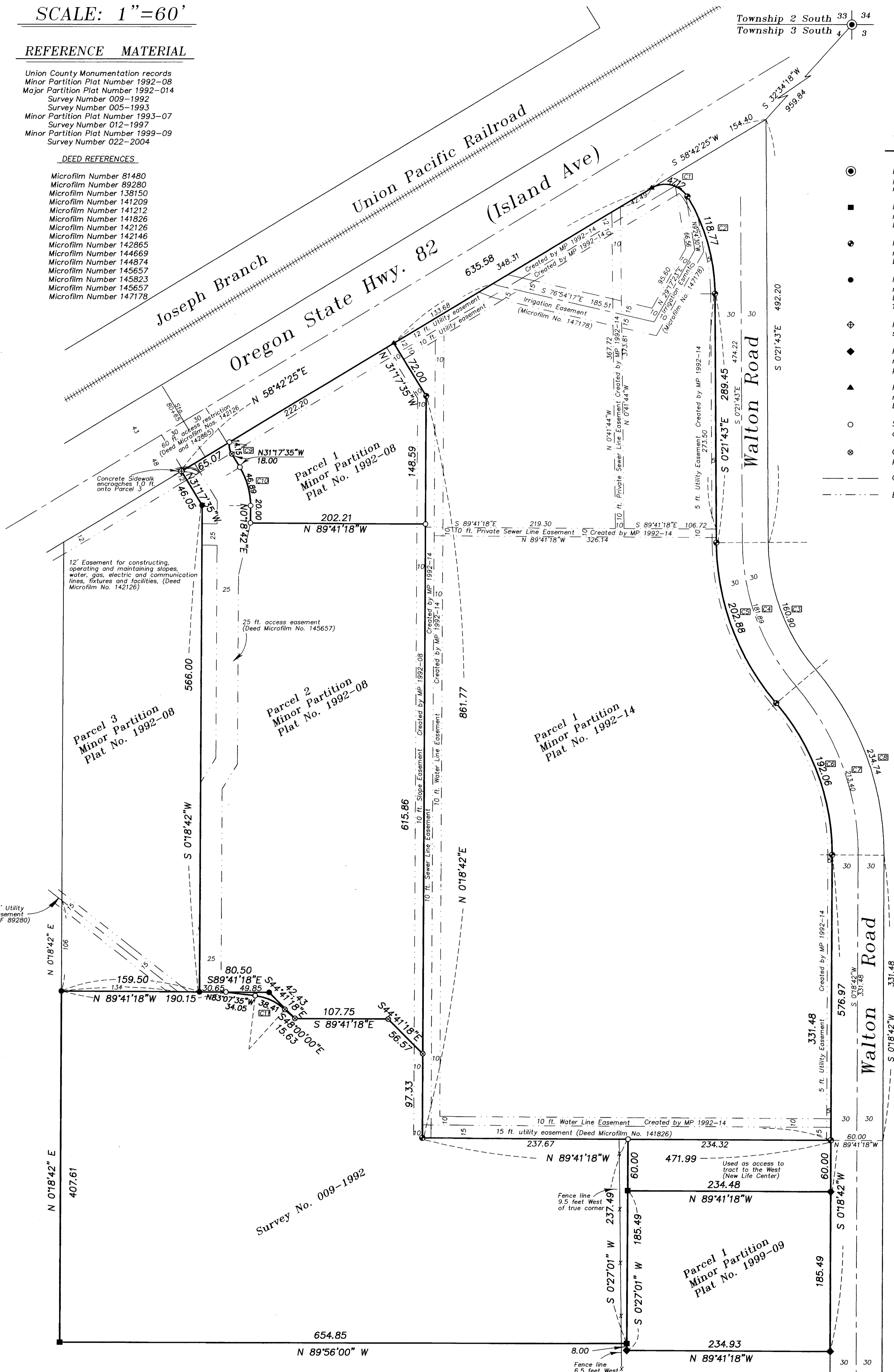
Union County Monumentation records  
 Minor Partition Plat Number 1992-08  
 Major Partition Plat Number 1992-014  
 Survey Number 009-1992  
 Survey Number 005-1993  
 Minor Partition Plat Number 1993-07  
 Survey Number 012-1997  
 Minor Partition Plat Number 1999-09  
 Survey Number 022-2004

### DEED REFERENCES

Microfilm Number 81480  
 Microfilm Number 89280  
 Microfilm Number 138150  
 Microfilm Number 141209  
 Microfilm Number 141212  
 Microfilm Number 141826  
 Microfilm Number 142126  
 Microfilm Number 142146  
 Microfilm Number 142865  
 Microfilm Number 144669  
 Microfilm Number 144874  
 Microfilm Number 145657  
 Microfilm Number 145823  
 Microfilm Number 145657  
 Microfilm Number 147178

## LEGEND

- Found brass cylinder in concrete as per Union County Monumentation records
- Found 5/8" iron pin with plastic cap marked "BGA SURVEY MARKER" set by survey number 009-1992
- Found 5/8" iron pin with plastic cap marked "BGA SURVEY MARKER" set by survey number 005-1993
- Found 5/8" iron pin with plastic cap marked "BGA SURVEY MARKER" set by minor partition plat number 1992-08
- ◆ Found 2" cross in concrete set by survey number 012-1997
- ◆ Found 5/8" iron pin with plastic cap marked "APA" set by minor partition plat number 1999-09
- ▲ Found 5/8" iron pin with plastic cap marked "BGB SURVEY MARKER" set by survey number 022-2004
- Set 5/8"x30" iron pin with plastic cap marked "BGB SURVEY MARKER"
- ⊕ Chiseled 2" cross in concrete for property corner
- Centerline
- - - Easement line



## Curve Table

West R/W Walton NE Corner Property $\Delta = 90^{\circ}00'00''$ $R = 30.00'$ $L = 47.12'$ $T = 30.00'$ $L.C. = 42.43'$ $S 76^{\circ}17'35'' E$	West R/W Walton Nly portion Property $\Delta = 30^{\circ}55'52''$ $R = 220.00'$ $L = 118.77'$ $T = 60.87'$ $L.C. = 117.33'$ $S 15^{\circ}49'39'' E$	East R/W Walton North S Curve $\Delta = 40^{\circ}04'59''$ $R = 230.00'$ $L = 160.90'$ $T = 83.90'$ $L.C. = 157.64'$ $S 20^{\circ}24'12'' E$	Centerline Walton North S Curve $\Delta = 40^{\circ}04'59''$ $R = 260.00'$ $L = 181.89'$ $T = 94.85'$ $L.C. = 178.20'$ $S 20^{\circ}24'12'' E$
West R/W Walton North S Curve $\Delta = 40^{\circ}04'59''$ $R = 290.00'$ $L = 202.88'$ $T = 105.79'$ $L.C. = 198.77'$ $S 20^{\circ}24'12'' E$	West R/W Walton South S Curve $\Delta = 40^{\circ}45'23''$ $R = 270.00'$ $L = 192.06'$ $T = 100.30'$ $L.C. = 188.04'$ $S 20^{\circ}04'00'' E$	Centerline Walton South S Curve $\Delta = 40^{\circ}45'23''$ $R = 300.00'$ $L = 213.40'$ $T = 111.44'$ $L.C. = 208.93'$ $S 20^{\circ}04'00'' E$	East R/W Walton South S Curve $\Delta = 40^{\circ}45'23''$ $R = 330.00'$ $L = 234.74'$ $T = 122.58'$ $L.C. = 229.82'$ $S 20^{\circ}04'00'' E$
North Curve-East line West Approach $\Delta = 40^{\circ}32'30''$ $R = 20.00'$ $L = 14.15'$ $T = 7.39'$ $L.C. = 13.86'$ $S 11^{\circ}01'20'' E$	South Curve-East line West Approach $\Delta = 31^{\circ}36'17''$ $R = 85.00'$ $L = 46.89'$ $T = 24.06'$ $L.C. = 46.29'$ $S 15^{\circ}29'26'' E$	Property Line South Curve $\Delta = 36^{\circ}01'32''$ $R = 61.00'$ $L = 38.41'$ $T = 19.86'$ $L.C. = 37.78'$ $S 65^{\circ}06'17'' E$	

## NARRATIVE

This survey was done at the request of CLC Associates. The purpose of this survey is to monument the exterior of the tracts shown. With the exception of the small tract conveyed by microfilm number 144874 near the South line of Parcel 2 of Minor Partition Number 1992-08, the exterior of these tracts were all previously monumented. I found a majority of the corners in place. The corners I monumented on this survey were destroyed by construction. I base the location of the tracts by the previous surveys listed in the reference material. The tract conveyed by Microfilm Number 144874 does not close mathematically. I place the error in the description at the curve. I force the tangent from either end of the curve and hold the 61 ft. radius as called for in the deed. I find no other unusual conditions on this survey.

REGISTERED PROFESSIONAL LAND SURVEYOR  
 RICK G. ROBINSON  
 2219  
 OREGON  
 JULY 17, 1988  
 Renewal Date: Dec. 31, 2004

UNION COUNTY SURVEYOR  
 Date Received 8/14/04  
 Date Filed 8/14/04  
 By [Signature]  
 File No. 023-2004

**BAGETT, GRIFFITH & BLACKMAN**  
 2006 Adams Avenue, LaGrande, Oregon  
 Map of Survey  
 Monumentation of Parcel 1 of Minor Partition Plat No. 1992-08, Parcel 1 of Major Partition Plat No. 1992-14, Parcel 1 of Minor Partition Plat No. 1999-09, and an additional tract situated in the Southeast 1/4 of the Northeast 1/4 of Section 4, Township 3 South, Range 38 East of the Willamette Meridian, UNION COUNTY, OREGON

SURVEYED FOR	CLC Associates
SURVEYED BY	R.G.R.
Scale: 1" = 60'	Drawn by: R.G.R.
	8/04

SURVEY NUMBER 023-2004