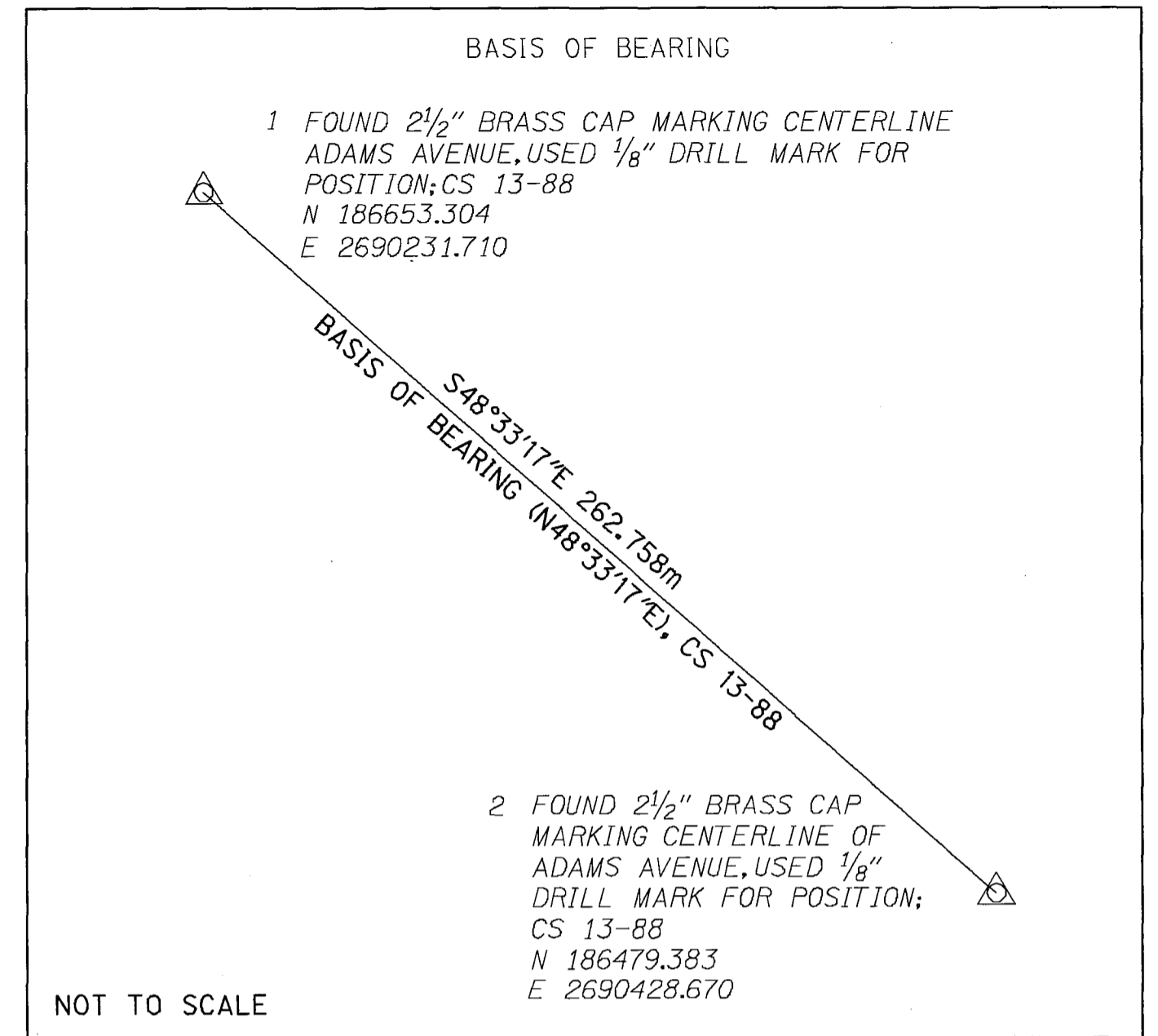


NE 1/4 SECTION 8, T3S, R38E, W.M.

REFERENCES

- UNION COUNTY MICROFILM 113898
- UNION COUNTY DOCUMENT 124952
- UNION COUNTY DOCUMENT 125926
- UNION COUNTY DOCUMENT 125966
- UNION COUNTY DOCUMENT 126462
- UNION COUNTY DOCUMENT 140482
- UNION COUNTY DOCUMENT 147820
- UNION COUNTY DOCUMENT 155058
- UNION COUNTY DOCUMENT 965722
- UNION COUNTY DOCUMENT 996160
- HONAN'S ADDITION TO LA GRANDE
- UNION COUNTY SURVEY 41
- UNION COUNTY SURVEY 28-64
- UNION COUNTY SURVEY 32-65
- UNION COUNTY SURVEY 94-71
- UNION COUNTY SURVEY 58-75
- UNION COUNTY SURVEY 23-79
- UNION COUNTY SURVEY 74-80
- UNION COUNTY SURVEY 19-81
- UNION COUNTY SURVEY 41-82
- UNION COUNTY SURVEY 20-87
- UNION COUNTY SURVEY 13-88
- UNION COUNTY SURVEY 18-89
- UNION COUNTY SURVEY 34-90
- UNION COUNTY SURVEY 004-2001
- UNION COUNTY SURVEY 026-2001
- UNION COUNTY SURVEY 039-2001



LEGEND	
☆	FOUND GPS STATION
△	FOUND MONUMENT USED AS NETWORK POINT
△—△	LINES OF OBSERVATION

WILLOW STREET SURVEY NARRATIVE

THIS SURVEY WAS DONE FOR THE OREGON DEPARTMENT OF TRANSPORTATION (ODOT) AT THE REQUEST OF STEVE DAVIS, PROJECT TEAM LEADER. THE SURVEY COMMENCED ON MARCH 17, 2003 AND WAS COMPLETED APRIL 14, 2003. THE PURPOSE OF THIS SURVEY IS TO PROVIDE A BASE MAP AND RIGHT-OF-WAY (R/W) RESOLUTION FOR A PORTION OF ADAMS AVENUE NEAR THE WILLOW STREET INTERSECTION. WILLOW STREET WAS ALSO MAPPED AND R/W RESOLVED FROM THE UNION PACIFIC RAILROAD R/W TO THE INTERSECTION WITH WASHINGTON AND SIXTEENTH STREET. THE BASIS OF BEARING FOR THIS SURVEY USED MONUMENTS ON THE CENTERLINE OF ADAMS AVENUE AS DESCRIBED BY UNION COUNTY SURVEY NUMBER 13-88.

RIGHT-OF-WAY CENTERLINE FOR ADAMS AVENUE, WAS DETERMINED USING FOUND MONUMENTS AT THE INTERSECTION OF ADAMS AVENUE WITH BALM STREET, WILLOW STREET, HALL STREET AND HIGHWAY AVENUE. HONAN'S ADDITION, UNION COUNTY SURVEYS (CS) 41, 18-89, AND 32-65 LIST ADAMS AVENUE AS 80' WIDE. CS 28-64, 58-75, 19-81, 13-88, 004-2001, 026-2001, AND 039-2001 CONFIRMS THE WIDTH SHOWING R/W AS BEING 40' ON EITHER SIDE OF CENTERLINE.

CENTERLINE FOR WASHINGTON WAS ESTABLISHED USING CS 13-88 AND 18-89 IN CONJUNCTION WITH UNION COUNTY DOCUMENT 113898. THE INTERSECTION OF BALM AND WASHINGTON WAS ESTABLISHED AT A POINT 20.05' ON LINE FROM AN "X" SCRIBED ON THE SOUTHERLY CURB OF WASHINGTON AND A BRASS DISC AT THE INTERSECTION OF BALM AND ADAMS. A POINT ON THE NORTHERLY R/W LINE OF WASHINGTON AVENUE WAS ESTABLISHED FROM RECORD DISTANCES OF UNION COUNTY DOCUMENT 11398. THE CENTERLINE OF WASHINGTON AVENUE WAS ESTABLISHED FROM A POINT 40 FEET MEASURED AT RIGHT ANGLES TO THIS POINT IN CONJUNCTION WITH THE POINT ESTABLISHED AT BALM AND WASHINGTON. CS 18-89 LISTS WASHINGTON AVENUE AS 80' WIDE. CS 58-75 CONFIRMS THE WIDTH SHOWING R/W AS BEING 40' ON EITHER SIDE OF CENTERLINE.

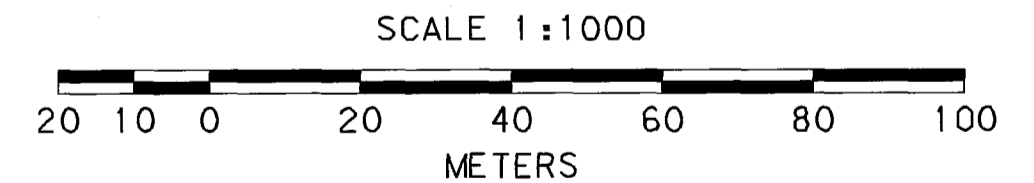
NETWORK POINT COORDINATE TABLE, *ASSUMED COORDINATES

PT. NO.	NORTHING	EASTING	DESCRIPTION
1	186653.304	2690231.710	FND. 2 1/2" BR. CAP MKD. BAGETT-GRIFFITH & ASSOC., OPLS 644, USED 1/8" DRILL MARK FOR POSITION; CS 13-88
2	186479.383	2690428.670	FND. 2 1/2" BR. CAP MKD. BAGETT-GRIFFITH & ASSOC., OPLS 644, USED 1/8" DRILL MARK FOR POSITION; CS 13-88
3	186628.400	2690244.267	FND. CHISEL MARK IN SIDEWALK ON SW CORNER OF ADAMS AVE. AND WILLOW ST., NO RECORDED SURVEY
4	186494.172	2690393.443	FOUND 5/8" IRON ROD; UNRECORDED MONUMENT
5	186458.587	2690629.371	FND. 2 1/2" BRASS CAP IN MONUMENT BOX FOR 1/4 CORNER OF SECTIONS 8 AND 9; CS 13-88

* NETWORK POINT 5 IS GPS STATION 9631 ON FILE WITH UNION COUNTY SURVEY RECORDS. THE STATE PLANE COORDINATES LISTED FOR THIS POINT IN INTERNATIONAL FEET ARE: N 611597.686; E 8825459.424. THESE COORDINATES WERE CONVERTED TO METRIC BY MULTIPLYING BY 0.3048 AND BROUGHT UP TO LOCAL DATUM PLANE BY DIVIDING BY A CONVERSION FACTOR OF 0.99976610. THE CONTROL NETWORK WAS THEN ROTATED ABOUT NETWORK POINT 5 TO TRUE BEARINGS USING COUNTY SURVEY 13-88 AND ASSUMED COORDINATES FOR ALL OTHER POINTS WERE DEVELOPED FROM THESE BEARINGS AND DISTANCES.

REGISTERED PROFESSIONAL LAND SURVEYOR
Robert E. Butler
 OREGON JULY 25, 1995
 ROBERT E. BUTLER
 2733
 EXPIRES 12/31/2005

UNION COUNTY SURVEYOR
 Date Received 3/29/04
 Date Filed 4/05/04
 By [Signature]
 File No. 005-2004



TO CONVERT METERS TO FEET DIVIDE BY 0.3048

OREGON DEPARTMENT OF TRANSPORTATION
 HORIZONTAL CONTROL, RECOVERY AND RETRACEMENT MAP
 ADAMS AVENUE AT WILLOW STREET
 LA GRANDE TO BAKER HIGHWAY
 UNION COUNTY
 MARCH 17, 2003 TO APRIL 14, 2003 FOR ODOT REGION 5
 3012 ISLAND AVENUE, LA GRANDE, OREGON 97850
 NETWORK, NARRATIVE SHEET 1 OF 4

SURVEY NUMBER 005-2004

NE 1/4 SECTION 8, T3S, R38E, W.M.

INTERSECTION OF BALM AND WASHINGTON ESTABLISHED AT 20.05' ON LINE BETWEEN POINTS 1019 AND 1000; CS 18-89.

- ① HONAN'S ADDITION, CS 41, 18-89, AND 32-65 LIST ADAMS AVE. AS 80' WIDE. CS 28-64, 58-75, 19-81, 13-88, 004-2001, 026-2001, 039-2001, SHOW R/W AS 40' ON EITHER SIDE OF CENTERLINE.
- ② CS 18-89 LISTS WASHINGTON AVE. AS 80' WIDE. CS 58-75, 74-80 SHOW R/W AS 40' ON EITHER SIDE OF CENTERLINE.
- ③ ANGLE PT. ESTABLISHED AT RECORD DISTANCE FROM INTERSECTION OF BALM ST. RECORD INTERIOR ANGLE OF 131°08'; CS 18-89

LEGEND

- () RECORD DATA FROM COUNTY SURVEY 13-88
- * () RECORD DATA FROM COUNTY SURVEY 94-71
- [] RECORD DATA FROM COUNTY SURVEY 026-2001
- * [] RECORD DATA FROM COUNTY SURVEY 039-2001
- { } RECORD SURVEY OR DOCUMENT AS NOTED
- FOUND MONUMENT NOTED IN TABLE
- ☆ GPS STATION
- △ FOUND MONUMENT USED AS NETWORK POINT
- R/W CENTERLINE
- - - EDGE OF PAVEMENT
- R/W OR PROPERTY LINE
- x- FENCE

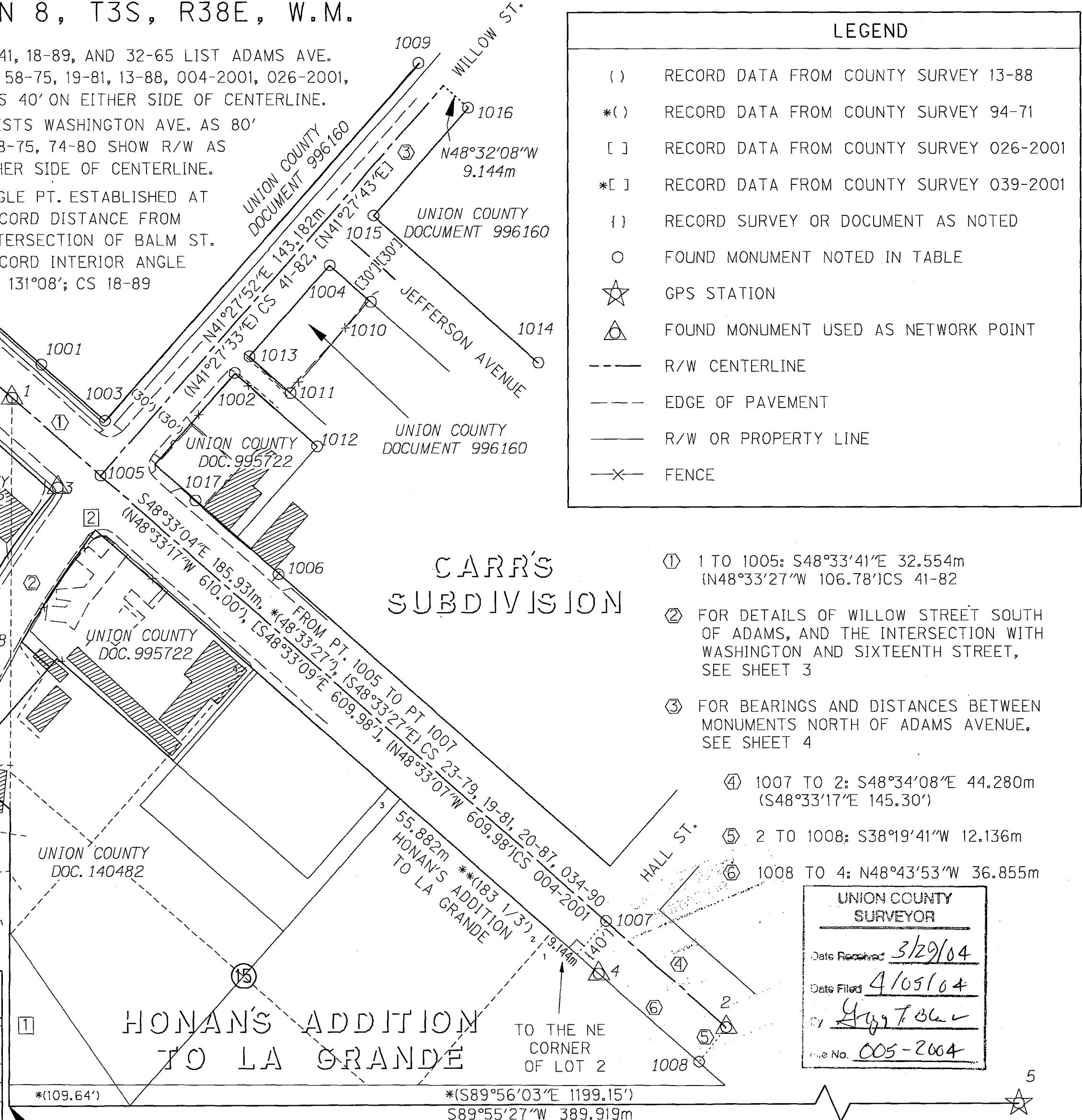
- ① SW CORNER HONAN'S ADD. TO NET "1"; N0°22'09"E 195.249m, USING *(587.26') FROM SW CORNER TO ADAMS AVE. SOUTHERLY R/W LINE, (53.32') FROM R/W LINE TO NETWORK "1".
- ② CORNER ESTABLISHED AT RECORD DISTANCE OF 367.67' FROM NE CORNER OF LOT 3 AS PER UNION COUNTY DOCUMENT 113898. N 186616.577 E 2690254.888
- ③ POINT ESTABLISHED AT RECORD DISTANCES FROM UNION COUNTY DOCUMENT 11398. POINT ALSO ESTABLISHES NORTHERLY R/W OF WASHINGTON STREET. N 186551.623 E 2690217.725

- ① 1 TO 1005: S48°33'41"E 32.554m (N48°33'27"W 106.78'ICS 41-82)
- ② FOR DETAILS OF WILLOW STREET SOUTH OF ADAMS, AND THE INTERSECTION WITH WASHINGTON AND SIXTEENTH STREET, SEE SHEET 3
- ③ FOR BEARINGS AND DISTANCES BETWEEN MONUMENTS NORTH OF ADAMS AVENUE, SEE SHEET 4

- ④ 1007 TO 2: S48°34'08"E 44.280m (S48°33'17"E 145.30')
- ⑤ 2 TO 1008: S38°19'41"W 12.136m
- ⑥ 1008 TO 4: N48°43'53"W 36.855m

FOUND MONUMENT COORDINATE TABLE, ASSUMED COORDINATES

PT. NO.	NORTHING	EASTING	DESCRIPTION
1	186653.304	2690231.710	FND. 2 1/2" BR. CAP MKD. BAGETT-GRIFFITH & ASSOC., OPLS 644, USED 1/8" DRILL MARK FOR POSITION; CS 13-88
2	186479.383	2690428.670	FND. 2 1/2" BR. CAP, SEE POINT NO. 1 FOR DESCRIPTION; CS 13-88
3	186628.400	2690244.267	FND. "X" MARK IN SIDEWALK, SW CORNER OF ADAMS AND WILLOW, NOT RECORDED
4	186494.172	2690393.443	FOUND 5/8" IRON ROD; CS 23-79
5	186458.587	2690629.371	FND. 2 1/2" BRASS CAP IN MONUMENT BOX FOR 1/4 CORNER OF SECTIONS 8 AND 9; CS 13-88
1000	186751.218	2690121.435	FND. 2 1/2" BR. CAP, SEE POINT NO. 1 FOR DESCRIPTION; CS 13-88
1001	186662.415	2690239.796	FND. 5/8" IRON ROD W/PLASTIC CAP MKD. "BGB SURVEY MARKER"; CS 039-2001
1002	186660.013	2690293.200	FND. 5/8" IRON ROD; CS 58-75, 039-2001
1003	186646.928	2690257.346	FND. 5/8" IRON ROD W/PLASTIC CAP MKD. "BGB SURVEY MARKER"; CS 039-2001
1004	186689.637	2690319.452	FND. 5/8" IRON ROD W/PLASTIC CAP MKD. "WESTLAKE CONSULTANTS"; CS 026-2001
1005	186631.766	2690256.107	FND. 2 1/2" BR. CAP, SEE POINT NO. 1 FOR DESCRIPTION; CS 13-88
1006	186604.407	2690305.212	FOUND 1" IRON PIPE; CS 41, 32-65, 026-2001
1007	186508.689	2690395.471	FND. 2 1/2" BR. CAP, SEE POINT NO. 1 FOR DESCRIPTION; CS 13-88
1008	186469.863	2690421.144	FND. 5/8" IRON ROD; CS 13-88
1009	186745.235	2690344.017	FND. 1" IRON PIPE; CS 026-2001 AND 039-2001 LIST AS 5/8" IRON ROD
1010	186679.574	2690330.822	FND. 5/8" IRON ROD W/PLASTIC CAP MKD. "WESTLAKE CONSULTANTS"; CS 026-2001
1011	186654.455	2690308.648	FND. 5/8" IRON ROD W/PLASTIC CAP MKD. "WESTLAKE CONSULTANTS"; CS 026-2001
1012	186639.799	2690315.986	FOUND 1/2" IRON ROD; 32-65, CS 026-2001
1013	186664.518	2690297.261	FND. 5/8" IRON ROD W/PLASTIC CAP MKD. "WESTLAKE CONSULTANTS"; CS 026-2001
1014	186662.779	2690377.141	FND. 5/8" IRON ROD, BENT; CS 026-2001
1015	186703.352	2690331.550	FND. 5/8" IRON ROD W/PLASTIC CAP MKD. "WESTLAKE CONSULTANTS"; CS 026-2001
1016	186733.007	2690357.768	FND. 5/8" IRON ROD W/PLASTIC CAP MKD. "WESTLAKE CONSULTANTS"; CS 026-2001
1017	186624.810	2690282.344	FND. 5/8" IRON ROD IN ASPHALT; CS 58-75 DESCRIBES "X" IN SIDEWALK
1018	186592.316	2690220.850	FND. 5/8" IRON ROD UNDER 6" OF SOIL; CS 74-80
1019	186673.790	2690052.574	FOUND CROSS CHISELED IN CURB; CS 18-89



CARR'S SUBDIVISION

HONAN'S ADDITION TO LA GRANDE

UNION COUNTY SURVEYOR

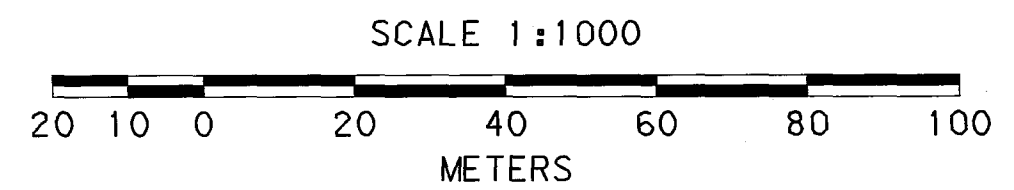
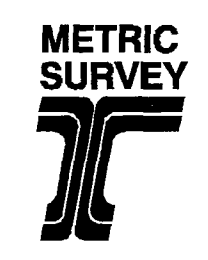
Date Received: 3/29/04

Date Filed: 4/05/04

By: [Signature]

File No. 005-2004

ESTABLISHED USING RECORD DISTANCES FROM CS 94-71 AND 13-88
N 186458.059
E 2690230.452



TO CONVERT METERS TO FEET DIVIDE BY 0.3048

REGISTERED PROFESSIONAL LAND SURVEYOR

Robert E. Butler

OREGON JULY 25, 1995
ROBERT E. BUTLER
2733

EXPIRES 12/31/2005

OREGON DEPARTMENT OF TRANSPORTATION

HORIZONTAL CONTROL, RECOVERY AND RETRACEMENT MAP

ADAMS AVENUE AT WILLOW STREET

LA GRANDE TO BAKER HIGHWAY

UNION COUNTY

MARCH 17, 2003 TO APRIL 14, 2003 FOR ODOT REGION 5

3012 ISLAND AVENUE, LA GRANDE, OREGON 97850

R/W, MONUMENTS SHEET 2 OF 4

SURVEY NUMBER 005-2004

NE 1/4 SECTION 8, T3S, R38E, W.M.

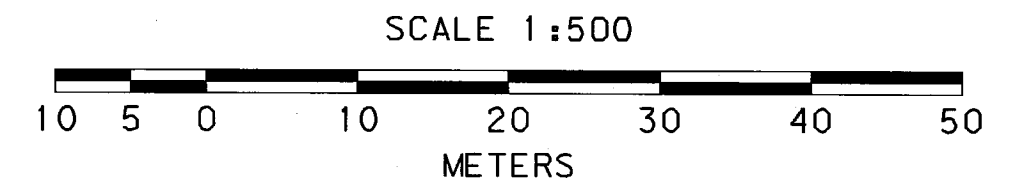
FOUND MONUMENT COORDINATE TABLE, ASSUMED COORDINATES

PT. NO.	NORTHING	EASTING	DESCRIPTION
1	186653.304	2690231.710	FND. 2 1/2" BR. CAP MKD. BAGETT-GRIFFITH & ASSOC., OPLS 644, USED 1/8" DRILL MARK FOR POSITION; CS 13-88
1005	186631.766	2690256.107	FND. 2 1/2" BR. CAP MKD. BAGETT-GRIFFITH & ASSOC., OPLS 644, USED 1/8" DRILL MARK FOR POSITION; CS 13-88
1018	186592.316	2690220.850	FND. 5/8" IRON ROD UNDER 6" OF SOIL; CS 074-80

REGISTERED
PROFESSIONAL
LAND SURVEYOR
Robert E. Butler
OREGON
JULY 25, 1995
ROBERT E. BUTLER
2733
EXPIRES 12/31/2005

- ① R = 146.856m (481.81')
LC BEARS N34°50'02"E 33.812m
(N34°49'39"E 110.93')
- ② R = 146.856m (481.81')
LC BEARS S48°33'04"E 15.240m
(S48°33'27"E 50.00')
- ③ N48°33'04"W 96.622m (N48°33'27"W 317.00')
FROM NORTHEAST CORNER OF LOT 3
- ④ (N48°23'19"W 33.72')
- ⑤ R = 280.773m (921.17')
LC BEARS (S25°45'41"W 124.74')
- ⑥ N41°27'01"E 36.576m (N41°26'33"E 120.00')

LEGEND	
()	RECORD DATA FROM UNION COUNTY DOCUMENT 11398
{ }	RECORD SURVEY OR DOCUMENT AS NOTED
○	FOUND MONUMENT NOTED IN TABLE
△	FOUND MONUMENT USED AS NETWORK POINT
---	R/W CENTERLINE
---	EDGE OF PAVEMENT
---	R/W OR PROPERTY LINE
—X—	FENCE



TO CONVERT METERS TO FEET DIVIDE BY 0.3048

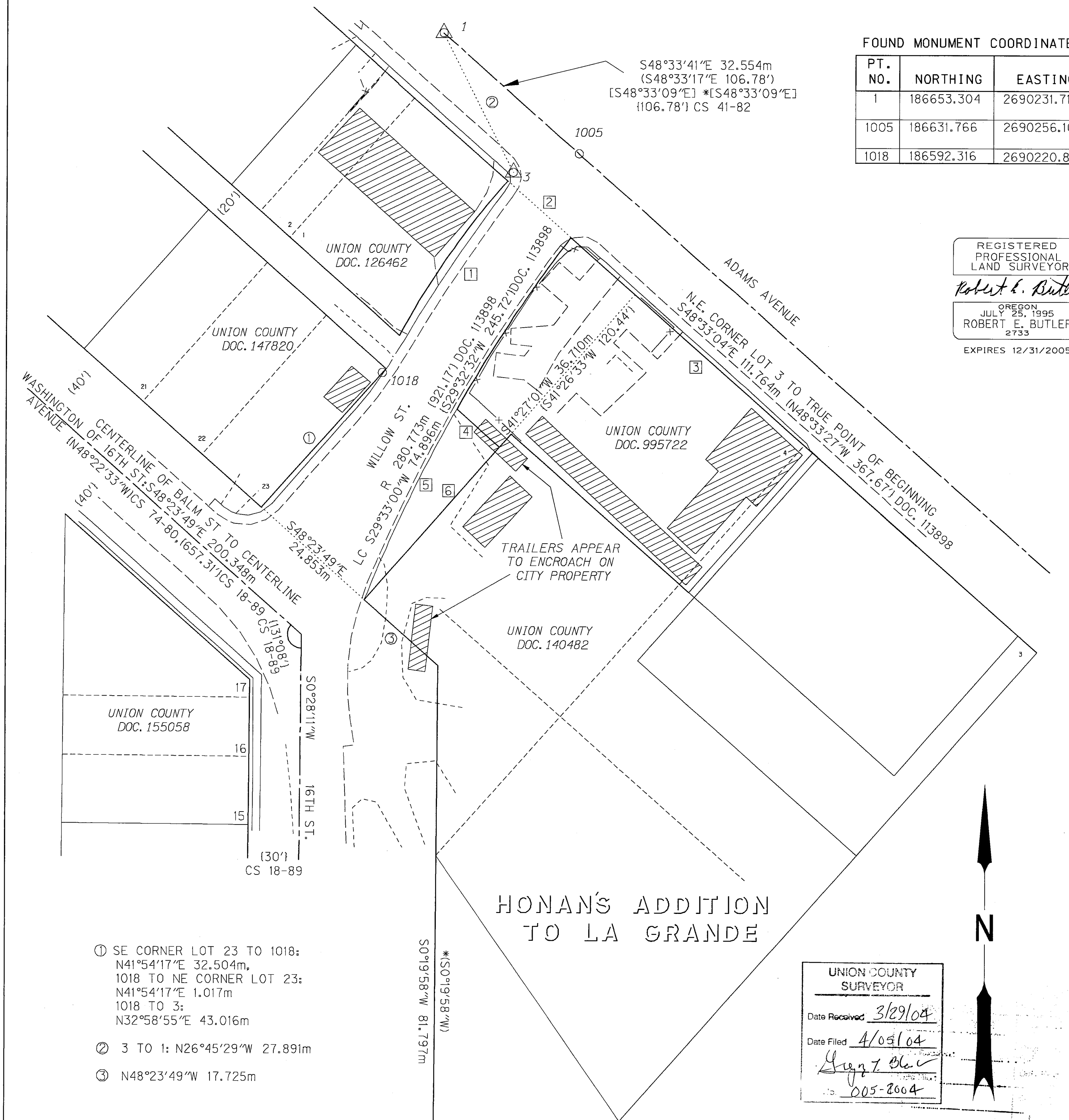
HONAN'S ADDITION
TO LA GRANDE

UNION COUNTY
SURVEYOR
Date Received 3/29/04
Date Filed 4/05/04
Greg T. Blair
005-2004



OREGON DEPARTMENT OF TRANSPORTATION
HORIZONTAL CONTROL, RECOVERY AND RETRACEMENT MAP
ADAMS AVENUE AT WILLOW STREET
LA GRANDE TO BAKER HIGHWAY
UNION COUNTY
MARCH 17, 2003 TO APRIL 14, 2003 FOR ODOT REGION 5
3012 ISLAND AVENUE, LA GRANDE, OREGON 97850
WILLOW ST. SOUTH OF ADAMS AVE. SHEET 3 OF 4

SURVEY NUMBER 005-2004



- ① SE CORNER LOT 23 TO 1018:
N41°54'17"E 32.504m,
1018 TO NE CORNER LOT 23:
N41°54'17"E 1.017m
1018 TO 3:
N32°58'55"E 43.016m
- ② 3 TO 1: N26°45'29"W 27.891m
- ③ N48°23'49"W 17.725m

NE 1/4 SECTION 8, T3S, R38E, W.M.

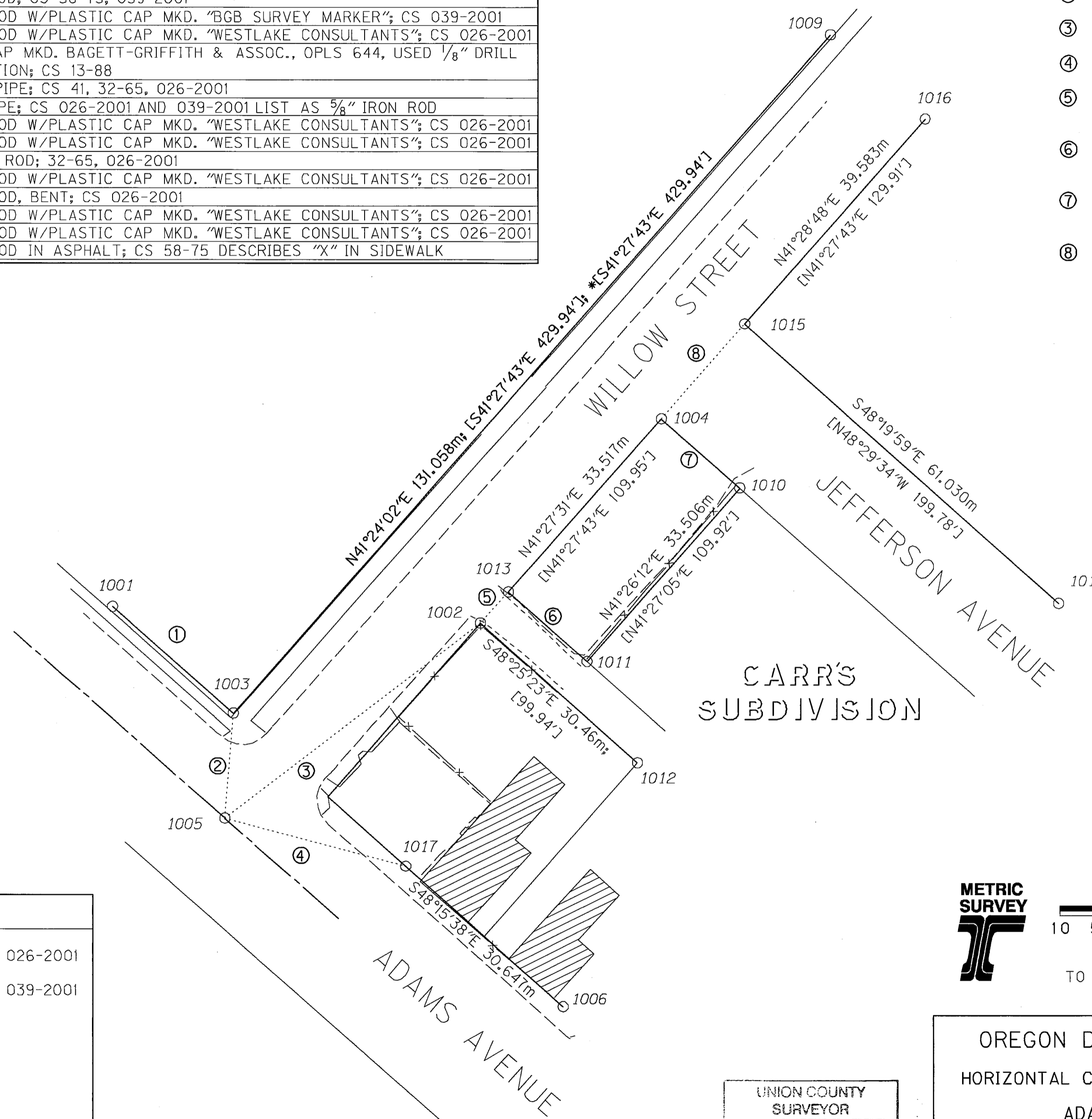
FOUND MONUMENT COORDINATE TABLE, ASSUMED COORDINATES

PT. NO.	NORTHING	EASTING	DESCRIPTION
1001	186662.415	2690239.796	FND. 5/8" IRON ROD W/PLASTIC CAP MKD. "BGB SURVEY MARKER"; CS 039-2001
1002	186660.013	2690293.200	FND. 5/8" IRON ROD; CS 58-75, 039-2001
1003	186646.928	2690257.346	FND. 5/8" IRON ROD W/PLASTIC CAP MKD. "BGB SURVEY MARKER"; CS 039-2001
1004	186689.637	2690319.452	FND. 5/8" IRON ROD W/PLASTIC CAP MKD. "WESTLAKE CONSULTANTS"; CS 026-2001
1005	186631.766	2690256.107	FND. 2 1/2" BR. CAP MKD. BAGETT-GRIFFITH & ASSOC., OPLS 644, USED 1/8" DRILL MARK FOR POSITION; CS 13-88
1006	186604.407	2690305.212	FOUND 1" IRON PIPE; CS 41, 32-65, 026-2001
1009	186745.235	2690344.017	FND. 1" IRON PIPE; CS 026-2001 AND 039-2001 LIST AS 5/8" IRON ROD
1010	186679.574	2690330.822	FND. 5/8" IRON ROD W/PLASTIC CAP MKD. "WESTLAKE CONSULTANTS"; CS 026-2001
1011	186654.455	2690308.648	FND. 5/8" IRON ROD W/PLASTIC CAP MKD. "WESTLAKE CONSULTANTS"; CS 026-2001
1012	186639.799	2690315.986	FOUND 1/2" IRON ROD; 32-65, 026-2001
1013	186664.518	2690297.261	FND. 5/8" IRON ROD W/PLASTIC CAP MKD. "WESTLAKE CONSULTANTS"; CS 026-2001
1014	186662.779	2690377.141	FND. 5/8" IRON ROD, BENT; CS 026-2001
1015	186703.352	2690331.550	FND. 5/8" IRON ROD W/PLASTIC CAP MKD. "WESTLAKE CONSULTANTS"; CS 026-2001
1016	186733.007	2690357.768	FND. 5/8" IRON ROD W/PLASTIC CAP MKD. "WESTLAKE CONSULTANTS"; CS 026-2001
1017	186624.810	2690282.344	FND. 5/8" IRON ROD IN ASPHALT; CS 58-75 DESCRIBES "X" IN SIDEWALK

NOTES

- ① PT. 1001 TO PT 1003: S48°34'24"E 23.406m; [N48°33'09"E 76.73']; *[N48°33'09"E 76.73']
- ② PT. 1005 TO PT. 1003: N04°40'18"W 15.213m
- ③ PT. 1005 TO PT. 1002: N52°42'36"E 46.624m
- ④ PT. 1005 TO PT. 1017: S75°09'05"E 27.143m
- ⑤ PT. 1002 TO PT. 1013: N42°01'58"E 6.065m [N41°27'43"E 20']
- ⑥ PT. 1013 TO PT. 1011: S48°31'56"E 15.196m [S48°31'14"E 49.97']
- ⑦ PT. 1004 TO PT. 1010; S48°29'23"E 15.184m [S48°29'34"E 49.95']
- ⑧ PT. 1004 TO PT. 1015: N41°24'56"E 18.288m

REGISTERED PROFESSIONAL LAND SURVEYOR
Robert E. Butler
 OREGON
 JULY 25, 1995
 ROBERT E. BUTLER
 2733
 EXPIRES 12/31/2005



LEGEND

[]	RECORD DATA FROM COUNTY SURVEY 026-2001
*[]	RECORD DATA FROM COUNTY SURVEY 039-2001
○	FOUND MONUMENT NOTED IN TABLE
---	R/W CENTERLINE
---	EDGE OF PAVEMENT
---	R/W OR PROPERTY LINE
-X-	FENCE

UNION COUNTY SURVEYOR
 Date Received 3/29/04
 Date Filed 4/05/04
 By *Ays Z. Sh*
 File No. 005-2004

METRIC SURVEY
 SCALE 1:500
 10 5 0 10 20 30 40 50
 METERS
 TO CONVERT METERS TO FEET DIVIDE BY 0.3048

OREGON DEPARTMENT OF TRANSPORTATION
 HORIZONTAL CONTROL, RECOVERY AND RETRACEMENT MAP
 ADAMS AVENUE AT WILLOW STREET
 LA GRANDE TO BAKER HIGHWAY
 UNION COUNTY
 MARCH 17, 2003 TO APRIL 14, 2003 FOR ODOT REGION 5
 3012 ISLAND AVENUE, LA GRANDE, OREGON 97850
 BEARINGS AND DISTANCES, WILLOW ST. SHEET 4 OF 4

SURVEY NUMBER 005-2004