

RECORD OF SURVEY

MT. EMILY CADASTRAL SURVEY

CONTRACT NO. 53-04R3-9-40C, TASK ORDER UMA-12

UMATILLA NATIONAL FOREST

July - August, 2003

SECTION 7, T. 1 N., R. 38 E., W.M.
UNION COUNTY, OREGON

HISTORY

1881 - Jacob C. Cooper, Contract 397, surveyed the range line between Townships 1 North, Range 37 and 38 East.

1882 - Herman A. Gradon, Contract 452, subdivided Township 1 North Range 37 East. He tied the corners between Sections 7, 12, 13 & 18 and between Sections 1, 6, 7 & 12; and gave descriptions of these corners.

1891 - John W. Kimbrell, Contract 579, subdivided the western portion of Township 1 North, Range 38 East. He tied the corners between Sections 7, 12, 13 & 18 and between Sections 1, 6, 7 & 12; and gave descriptions of these corners and scribed a new northeast bearing tree for the corner Sections 7, 12, 13 & 18.

1973 - James G. Voelz, PLS 381, remonumented the corner between Sections 7, 8, 17 & 18.

1980 - Gary Langlitz, PLS 1099, C.S. 97-80 surveyed and subdivided Section 7. He set the corner between Sections 7, 12, 13 & 18, between Sections 1, 6, 7 & 12, and the 1/4 corner between Sections 7 & 12 from original evidence. He set the 1/4 corner between Sections 7 & 18, and the West 1/16 between Sections 6 & 7 by single proportion

METHOD OF SURVEY & STANDARDS

The survey control was conducted using Trimble 4800s and Ashtech Z12s dual frequency GPS receivers with CORS stations SPN1, COBS & IDTD being used as control. The corners were occupied directly using the GPS units. The posting lines were then surveyed using a Nikon DTM420 Total Station.

All measurements meet state and U.S.D.A. Forest Service Contract requirements. All GPS measurements were made in accordance with "Standard and Guidelines for Cadastral Surveys Using Global Positioning Methods" dated May 9, 2001, version 1.0 by U.S. Department of Agriculture, Forest Service and U.S. Department of Interior, Bureau of Land Management.

PURPOSE OF SURVEY

The intent of this survey is to define, mark and post the common boundary between National Forest Land and private lands for administrative purposes.

Examined and accepted for the USDA Forest Service this 21st day of October, 2003.

David A. Schlaich
David Schlaich, C.O.R.

I certify that his survey was performed at the request of the Forest Supervisor, Umatilla National Forest.

J. Schlaich 10/21/03
National Forest Supervisor Date

UNION COUNTY SURVEYOR

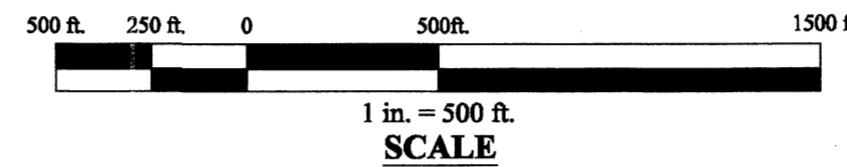
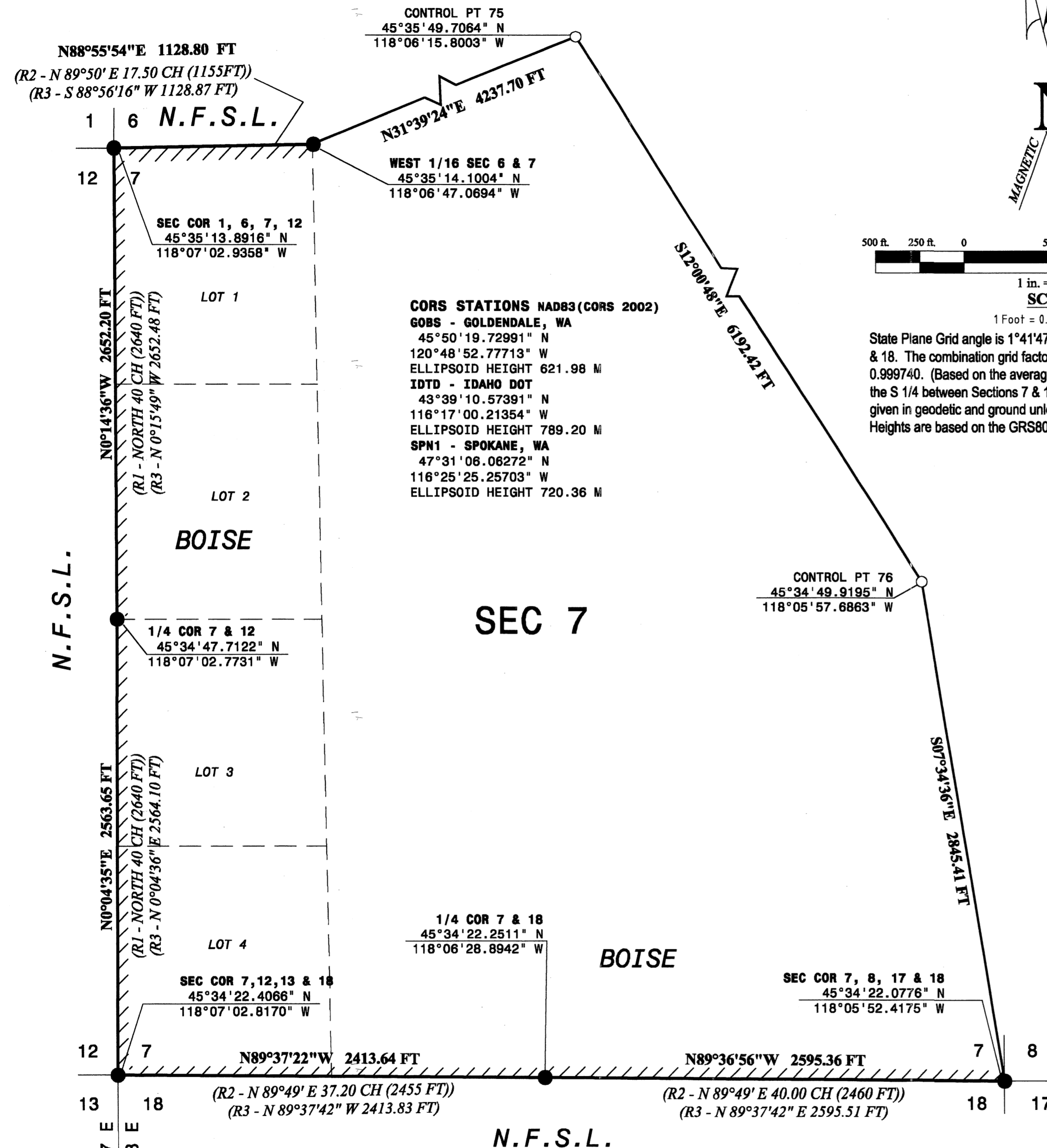
Date Received 10/23/03
Date Filed 10/31/03
Filed By Evelyn R. Kalb
File Number 032-2003

REGISTERED PROFESSIONAL LAND SURVEYOR
Evelyn R. Kalb 10/10/03
OREGON
July 25, 1990
Evelyn R. Kalb
2456
EXPIRES: 06/30/2005

CHESEBRO & KALB
Land Surveying & Boundary Consulting
P.O. Box 19
Mill City, OR 97360

CREW: WALTER, CORDOZA, EDWARDS-HILL, CHESEBRO
DRAWN BY: KALB
CHECKED BY: CHESEBRO
SHEET: 1 OF 3
JOB NO. 03-02

SURVEY NUMBER 032-2003



State Plane Grid angle is 1°41'47" at the S 1/4 between Sections 7 & 18. The combination grid factor (scale and sea level combined) is 0.999740. (Based on the average elevation and the scale factor at the S 1/4 between Sections 7 & 18.) Bearing and distances are given in geodetic and ground unless otherwise noted. Ellipsoid Heights are based on the GRS80 datum.

LEGEND

- Found monument as noted in corner notes
- 5/8" x 24" rebar with 2 1/2" aluminum cap marked with the point number and "GPS 1316 PLS 2456 2003"
- (Italics) Record Data
- R1 Cooper, 1881
- R2 Kimbrell, 1891
- R3 Langlitz, 1980
- Property Line posted (+/- 1 ft.) with 6 ft. galvanized post and property boundary sign.
- N.F.S.L. National Forest System Lands

SURVEYOR'S NOTES:

1. See Corner Recordations forms filed concurrently with this Record of Survey.
2. Boise's deed is recorded at Doc. No. 143603, Union County.

RECORD OF SURVEY

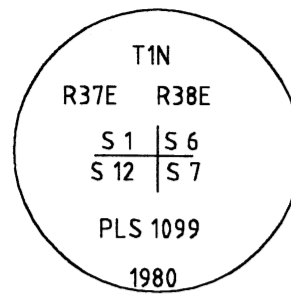
MT. EMILY CADASTRAL SURVEY

CONTRACT NO. 53-04R3-9-40C, TASK ORDER UMA-12
UMATILLA NATIONAL FOREST

SECTION 7, T. 1 N., R. 38 E., W.M.
UNION COUNTY, OREGON

Section Corner between Sections 1, 6, 7 & 12

History of original corner establishment:



J. Cooper, 1881

Set: post 4 1/2 ft. long 4 ins. square 2 ft. in the ground on E side of mountain 600 ft. above valley lying E, from which:

A pine 36 ins. diam. bears N 27° E 144 lks. (95.0 ft.) dist. marked T1N R38E S6 BT

A fir 10 ins. diam. bears S 10° E 98 lks. (64.7 ft.) dist. marked T1N R38E S7 BT

No other trees withing limits
Raised mound of stone alongside.

H. Gradon, 1882

Found: a post 4 ins. square, from which:

A pine 36 ins. diam. bears N 27° E 144 lks. (95.0 ft.) dist. marked T1N R38E S6 BT

A fir 10 ins. diam. bears S 10° E 98 lks. (64.7 ft.) dist. marked T1N R38E S7 BT

A mound of stone alongside.

J. Kimbrell, 1891

Found: a post 4 1/2 feet long 4 ins. square 24 ins. in the ground, from which:

A pine 36 ins. dia. bears N 27° E 144 lks. (95.0 ft.) dist. marked T1N R38E S6 BT

A fir 10 ins. dia. bears S 10° E 98 lks. (64.7 ft.) dist. marked T1N R38E S7 BT

Langlitz, 1980

Found: remains of stone mound, from which:

An original 36" now 49" ponderosa pine, alive with scribing "38S6" on a partially-healed blaze bears N 27° E 95.0 feet.

Set: a 2" x 30" galvanized iron pipe, 15" in the ground to bedrock, and construct a stone mound 3' diam. at base to top of cap with brass cap attached, from which we mark new BTs:

A 22" Douglas fir bears S 77° E 25.5 feet, scribed "T1N R38E S7 BT" on a double blaze.

A 20" Douglas fir, bears S 36° W 78.6 feet, scribed T1N R37E S12 BT" on a double blaze.

A 10" Douglas fir bears N 27 1/2° W 46.3 feet, scribed "T1N R37E S1 BT" on a double blaze.

Attached brass washer, stamped "LS 1099" to lower blaze of new BTs.

Description of corner evidence found:

Monument Found:

A 2 1/2" brasscap, marked as shown, on a 2 1/2" (not 2") galvanized iron pipe, firm in rock collar, 10" showing above the ground. Guard post with LSM and Property Boundary signs northerly 4 ft.

Accessories Found:

A live/healthy ponderosa pine 50 ins. diam. bears N 27° E 93.7 ft. (record 144 lks. (95.0 ft.)) with a healed blaze. (Orig. BT)

No trace found of original southeast BT.

A live/healthy Douglas fir, 23 ins. diam. bears S 77° E 28.7 ft. (record 25.5 ft.) with healed double blaze. (Langlitz BT)

A live/healthy Douglas fir 23 ins. diam. bears S 36° W 77.8 ft. (record 78.6 ft.) with a healed double blaze. (Langlitz BT)

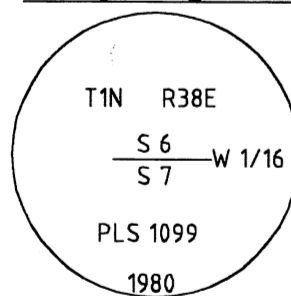
A live/healthy Douglas fir 16 ins. diam. bears N 27 1/2° W 43.8 ft. (record 46.3 ft.) with healed double blaze. (Langlitz BT)

Description of monument and accessories I established to perpetuate the original location of this corner:

Red paint, posts and signs added as needed.

West Sixteenth Corner between Sections 6 & 7

History of original corner establishment:



Langlitz, 1980

Set: by single proportionate measurement, a 2" x 30" galvanized iron pipe, 28" in the ground, with brass cap, from which:

An 8" white fir, scribed "W 1/16 S6 BT" on a double blaze bears N 70 1/2° E 62.8 feet.

An 8" larch, scribed "W 1/16 S7 BT" on a double blaze, bears S 42° E 69.8 feet.

Attached brass washer marked "LS1099" to lower blaze of each BT.

Description of corner evidence found:

Monument Found:

A 2 1/2" brasscap, marked as shown, on a 2 1/2" (not 2") galvanized iron pipe, 3" showing above the ground. Guard post northeast 5 ft.

Accessories Found:

A white fir, alive & healthy, 14 ins. diam., bears N 70 1/2° E 62.8 ft. with a double blaze and brass washer.

A tamarack, dead & standing, 14 ins. diam., bears S 42° E 71.6 ft. (record 69.8 ft.) marked W 1/16 S7 BT on a double blaze with brass washer.

Description of monument and accessories I established to perpetuate the original location of this corner:

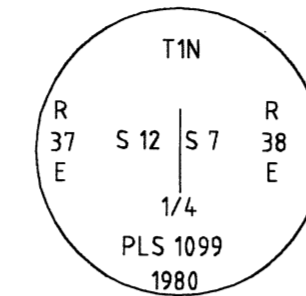
Accessories Set:

A tamarack, 17 ins. diam., bears S 55° E 40.2 ft. marked W 1/16 S7 BT on a double blaze with a brass washer stamped PLS 2456.

Red paint, posts, and signs added as needed.

Quarter Corner between Sections 7 & 12

History of original corner establishment:



Cooper, 1881

Set: post 3 1/2 feet long 3 ins. square 18 inches in the ground on steep N hillside in fir timber, and dense undergrowth, from which:

A spruce 8 ins. diam. bears S 38° E 34 lks. (22.4 ft.) dist. marked 1/4 S BT

A fir 13 ins. diam. bears S 40° W 13 lks. (8.6 ft.) dist. marked 1/4 S BT

Langlitz, 1980

No trace of the original corner post or bearing trees could be found. We find a well-defined line of blazes running N-S, and open one North of the corner point, which is 95-100 years old by ring count. We therefore establish the True Corner Point as follows:

At 2.75 chains South of a well-defined spring branch, Course E, on a steep N hillside and at a mean E-W position along the found line of N-S blazes, we set a 2" x 30" galvanized iron pipe, 28" in the ground with brass cap, from which

A 22" spruce, scribed "1/4 S7 BT" on a double blaze bears S 10° E 15.5 feet.

A 16" grand fir, scribed "1/4 S12 BT" on a double blaze bears N 74° W 29.8 feet

Attached brass washer stamped "LS 1099" to lower blaze of new BTs

Description of corner evidence found:

Monument Found:

A 2 1/2" brasscap, marked as shown, on a 2 1/2" galvanized iron pipe, firmly set with rock collar and 3" showing above the ground. Guard post southwesterly 3 ft.

Accessories Found:

A spruce, live/healthy, 21 ins. diam. bears S 10° E 15.5 ft. with partially healed double blaze, with scribing visible on a double blaze. (Langlitz BT)

A white fir, live/healthy, 21 ins. diam., bears N 74° W 29.8 ft., with partially healed double blaze with scribing visible. (Langlitz BT)

Found old blazed tree approximately 60 ft. northerly of corner and 2 ft. easterly of line. The tree has a quarter blaze on its West side which appears to have been opened. Distance to creek checks at 2.75 chains.

Description of monument and accessories I established to perpetuate the original location of this corner:

Accessories Set:

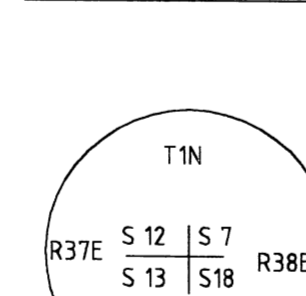
A white fir, live/healthy, 22 ins. diam., bears N 42 1/2° E 32.7 ft. marked X BT on a double blaze with a brass washer stamped PLS 2456.

A white fir, live/healthy, 21 ins. diam. bears S 64 1/4° W 51.1 ft., marked X BT on a double blaze with a brass washer stamped PLS 2456.

Red paint, posts and signs added as needed.

Section Corner between Sections 7, 12, 13 & 18

History of original corner establishment:



J. Cooper, 1881

Set: post 4 1/2 feet long 4 ins. square 2 feet in the ground on N side of ridge 150 feet below the summit 250 feet above the bottom of ravine, from which:

A fir 2 1/2 ins. diam. bears N 18° E 20 lks. (13.2 ft.) dist. marked

T1N R38E S7 BT

A fir 6 ins. diam. bears S 70° E 18 lks. (11.9 ft.) dist. marked

T1 N R38E S18 BT

A fir 7 ins. diam. bears S 53° W 9 lks. (5.9 ft.) dist. marked

T1N R37 E S13 BT

A fir 7 ins. diam. bears N 69° W 27 lks. (17.8 ft.) dist. marked

T1N R37E S12 BT

H. Gradon, 1882

Found: a post 4 ins. square, from which

A fir 2 1/2 ins. diam. bears N 18° E 20 lks. (13.2 ft.) dist. marked T1N R38E S7 BT

A fir 6 ins. diam. bears S 70° E 18 lks. (11.9 ft.) dist. marked T1 N R38E S18 BT

A fir 7 ins. diam. bears S 53° W 9 lks. (5.9 ft.) dist. marked T1N R37 E S13 BT

A fir 7 ins. diam. bears N 69° W 27 lks. (17.8 ft.) dist. marked T1N R37E S12 BT

J. Kimbrell, 1891

Found: post 4 ins. square, 4 1/2 ft. long, 24 ins. in to ground, from which:

A fir 6 ins. diam. bears S 70° E 18 lks. (13.2 ft.) dist. marked T1 N R38E S18 BT

A fir 7 ins. diam. bears S 53° W 9 lks. (5.9 ft.) dist. marked T1N R38 E S13 BT (error in notes)

A fir 7 ins. diam. bears N 69° W 27 lks. (17.8 ft.) dist. marked T1N R38E S12 BT (error in notes)

The bearing tree in S7 has fallen down and is decaying. I mark a fir 5 ins. dia. bears N 47 E 18 lks (11.9 ft.) dist. marked T1N R38E S7 BT

Section Corner between Sections 7, 12, 13 & 18 (continued)

Langlitz, 1980

Found: No trace of the original corner post, but found the following original bearing trees:

A 2 1/2" fir, now a 6" dead windfall Douglas Fir, with scribing "38E S7 B" visible on a partially healed single blaze bears N 73° E 13.2 feet

A 6" fir, now a 10" white fir, alive and in fair condition, with scribing "138S" visible on a partially-healed upper blaze, lower blaze well-healed, bears S 80° E 11.9 feet

A 7" fir, now a 16" white fir, alive with well-healed double blaze bears S 68° W 5.9 feet.

A 7" fir, now an 18" grand fir, alive with well-healed double blaze, bears N 50° W 17.8 feet.

Set: a 2" x 30" galvanized iron pipe, 28" in the ground on a steep NW slope, with brass cap, from which:

A 6" white fir, scribed "T1N R38E S7 BT" on a double blaze bears N 49 1/2° E 53.1 feet

A 6" spruce, scribed "T1N R38E S18 BT" on a double blaze bears S 19° E 25.7 feet

Attached brass washer, marked "LS 1099" to lower blaze of new BTs

Note: While it appears that Langlitz used Kimbrell's northeast BT rather than the original Cooper BT, the original bearings have enough error in them that I feel Langlitz's placement of the monument is as good of a solution as any other solution that I or another surveyor could find.

Description of corner evidence found:

Monument Found:

A 2 1/2" brasscap, marked as shown, on a 2 1/2" galvanized iron pipe (not 2" as in record), 5" showing above the ground.

Accessories Found:

No trace of original Cooper NE BT.

A fir, 11 ins. in diam., bears S 81 1/2° E 11.9 ft. (record S 70° E & S 80° E), 6 ft. high stump with scribing 38ES visible on a double blaze. (Orig. BT)

A white fir, 20 ins. in diam., bears S 70 3/4° W 5.9 ft. (record S 53° W & S 68° W), alive & healthy, with healed double blaze. (Orig. BT)

A white fir, 23 ins. in diam., bears N 67 1/4° W 17.8 ft. (record N 69° W & N 50° W) with healed blaze. (Orig. BT)

A fir, 7 ins. in diam., bears N 70° E 13.7 ft. (record N 47° E 11.9 ft. & N 73° E 13.2 ft.), scribing visible. (Kimbrell BT)

A white fir, 11 ins. in diam., bears N 49 1/2° E 53.1 ft., dead & standing. (Langlitz BT)

A spruce, 6 ins. in diam. bears S 19° E 25.7 ft., down with full scribing visible on a double blaze. (Langlitz BT)

Description of monument and accessories I established to perpetuate the original location of this corner:

Accessories Set:

A white fir, 23 ins. in diam., bears N 48 1/4° E 71.3 ft., marked T1NR38ES7 BT on a double blaze with a brass washer marked PLS 2456.

A white fir, 29 ins. in diam., bears S 64 1/2° E 37.9 ft., marked T1N R38ES18 BT on a double blaze, with a brass washer marked PLS 2456.

Red paint, posts and signs added as needed.

UNION COUNTY
SURVEYOR

Date Received 10/23/03

Date Filed 10/31/03

Filed By *Evelyn R. Kalb*

File Number 032-2003

REGISTERED
PROFESSIONAL
LAND SURVEYOR

Evelyn R. Kalb 10/1/03
OREGON
July 25, 1990
Evelyn R. Kalb
2456
EXPIRES: 06/30/2005

CHESEBRO
& KALB

Land Surveying &
Boundary Consulting

P.O. Box 19
Mill City, OR 97360

CREW: WALTER, CORDOZA,
EDWARDS-HILL, CHESEBRO

DRAWN BY: KALB
CHECKED BY: CHESEBRO

SHEET: 2 OF 3
JOB NO. 03-02

503-897-2722

SURVEY NUMBER 032-2003

RECORD OF SURVEY

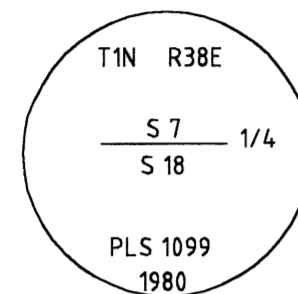
MT. EMILY CADASTRAL SURVEY

CONTRACT NO. 53-04R3-9-40C, TASK ORDER UMA-12
UMATILLA NATIONAL FOREST

SECTION 7, T. 1 N., R. 38 E., W.M.
UNION COUNTY, OREGON

Quarter Corner between Sections 7 & 18

History of original corner establishment:



J. Kimbrell, 1891

Set: A fir, 3 ins. dia., marked 1/4 S on N face, from which:
A fir 5 ins. dia. bears S 7° W 32 lks. (21.1 ft.) dist. marked 1/4 S BT
A fir 3 ins. dia. bears N 20° W 7 lks. (4.6 ft.) dist. marked 1/4 S BT

Langlitz, 1980

Found: No trace remains of the original corner or accessories.

Set: At a point determined by single proportionate measurement a 2" x 30" galvanized iron pipe, 26" in the ground, with brass cap, from which:

A 20" white fir, scribed "1/4 S 18 BT" on a double blaze bears S 53 1/2° W 52.3 feet
A 22" larch, scribed "1/4 S 7 BT" on a double blaze bears N 73° W 84.8 feet
Attached brass washers stamped "LS 1099" to lower blaze of new BTs

Description of corner evidence found:

Monument Found:

A 2 1/2" brasscap, marked as shown, on a 2 1/2" galvanized iron pipe, in good condition, and 4" showing above the ground. Guard post with LSM East 5.2 ft.

Accessories Found:

A white fir, alive/healthy (record 20 ins. diam.), bears S 53 1/2° W, 52.3 ft., with healed double blaze. (Langlitz BT)
A tamarack, dead & standing (record 22 ins. diam.), bears N 73° W, 84.8 ft., partial scribing visible on a double blaze. (Langlitz BT)

Note: Looked for original corner and its accessories. Found no remains of the original corner or original BTs.

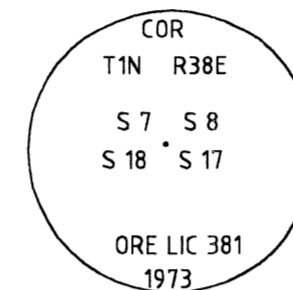
Description of monument and accessories I established to perpetuate the original location of this corner:

Accessories Set:

A white fir, 4 ins. diam, bears N 25 1/4° E 38.5 ft. marked X BT on a double blaze with a brass washer stamped PLS 2456.
A white fir, 6 ins. diam., bears S 25 1/4° E 14.7 ft., marked X BT on a double blaze with a brass washer stamped PLS 2456.
A white fir, 11 ins. diam., bears N 68 3/4° W 55.4 ft., marked 1/4 S 7 BT on a single blaze with a brass washer stamped PLS 2456.
Red paint, posts and signs added as needed.

Section Corner between Sections 7, 8, 17 & 18

History of original corner establishment:



J. Kimbrell, 1891

Set: post 4 feet long 4 ins. square 24 ins. in the ground, from which:
A fir 12 ins. dia. bears N 1 1/2° E 175 lks. (115.5 ft.) dist. marked T1N R38E S8 BT
A "tamrack" 4 ins. dia. bears S 40° E 23 lks. (15.2) dist. marked T1N R38E S17 BT
A "tamrack" 3 ins. dia. bears S 22 1/2° W 61 lks. (40.3 ft.) dist. marked T1N R38E S18 BT
A fir 12 ins. dia. bears N 36° W 175 lks. (115.5 ft.) dist. marked T1N R38 E S7 BT

Voelz, 1973

Found:

A tamarack was found at S 40° E at 23 lks. (15.2) The tree is now 18" in diam. and growth is completely over the scribe

A tamarack 18" in diam. was found at S 22 1/2° W at 61 lks. (40.3 ft.) with scribe

Set: a 2" pipe with a brass cap to a depth of approx. two feet, from which:

A tamarack 10" in diam. bears N 44° E a dist. of 43 feet marked T1N R38E S8 BT

The tamarack at S 40° E was again scribed T1N R38E S17 BT and distance to the BT is now 14.6 feet.

The tamarack at S 22 1/2° W was not touched as scribe is visible.

A tamarack 16" in diam. bears N 38° W a distance of 51.0 feet marked T1N R38E S7 BT

The distance to bearing trees is measured along surface of ground to BT scribe.

Langlitz, 1980

Found: 2" Iron Pipe, firmly set extending 8" above ground with brass cap, from which:

An 11" tamarack bears N 44° E 43 feet

OBT, a 22" tamarack, rescribed by Voelz bears S 46° E 14.6 feet.

OBT, a 20" tamarack, broken scribing "INR" visible on previously opened blaze bears S 26° W 39.2 feet

A 15" tamarack with scribing "T1N R38E S7 BT" visible on double blaze bears N 40° W 51.0 feet.

Set:

A 10" spruce, scribed "T1N R38E S18 BT" on a double blaze bears S 48° W 14.3 feet

Attached brass washer marked "LS1099" to lower blaze of new BT.

Description of corner evidence found:

Monument Found:

A 3" brasscap, marked as shown, on a 2 1/2" galvanized iron pipe, firmly set, and 5" showing above the ground. Guard post northerly 3 ft.

Accessories Found:

No trace of original northeast BT found.

A tamarack, alive/healthy, 23 ins. diam., bears S 44° E (record S 40° E & S 46° E) 14.6 ft., with healed double blaze. (Orig. BT)

A 10 ft. high tamarack stump, bears S 26° W 39.2 ft., with scribing visible. (Orig. BT)

No trace of original northwest BT found.

A tamarack, alive, 15 ins. diam., bears N 44° E 42.3 ft. (record 43 ft.), with healed blaze. (Voelz BT)

A tamarack, alive/healthy, 18 ins. diam., bears N 40° W, 51.0 ft., with a healed double blaze. (Voelz BT)

A spruce, dead & leaning, bears S 48° W, 14.3 ft., with scribing visible on a double blaze. (Langlitz BT)

Description of monument and accessories I established to perpetuate the original location of this corner:

Accessories Set:

A white fir, 13 ins. diam, bears S 58° W 42.7 ft. marked T1N R38E S18 BT on a double blaze with a brass washer stamped PLS 2456.

Added red paint, posts and signs added as needed.

UNION COUNTY
SURVEYOR

Date Received 10/23/03

Date Filed 10/21/03

Filed By *Evelyn R. Kalb*

File Number 032-2003

REGISTERED
PROFESSIONAL
LAND SURVEYOR

Evelyn R. Kalb 10/21/03

OREGON
July 25, 1990
Evelyn R. Kalb
2456

EXPIRES: 06/30/2005

CHESEBRO
&
KALB

Land Surveying &
Boundary Consulting

P.O. Box 19
Mill City, OR 97360

CREW: WALTER, CORDOZA,
EDWARDS-HILL, CHESEBRO

DRAWN BY: KALB
CHECKED BY: CHESEBRO

SHEET: 3 OF 3
JOB NO. 03-02

503-897-2722

SURVEY NUMBER 032-2003