

BASIS OF BEARING

Forward bearing from the Southeast corner of Section 32 to the South quarter corner of Section 32 being South 89°54'08" West, based on GPS Observations (WGS 84 Datum)

SCALE: 1" = 600'

REFERENCE MATERIAL

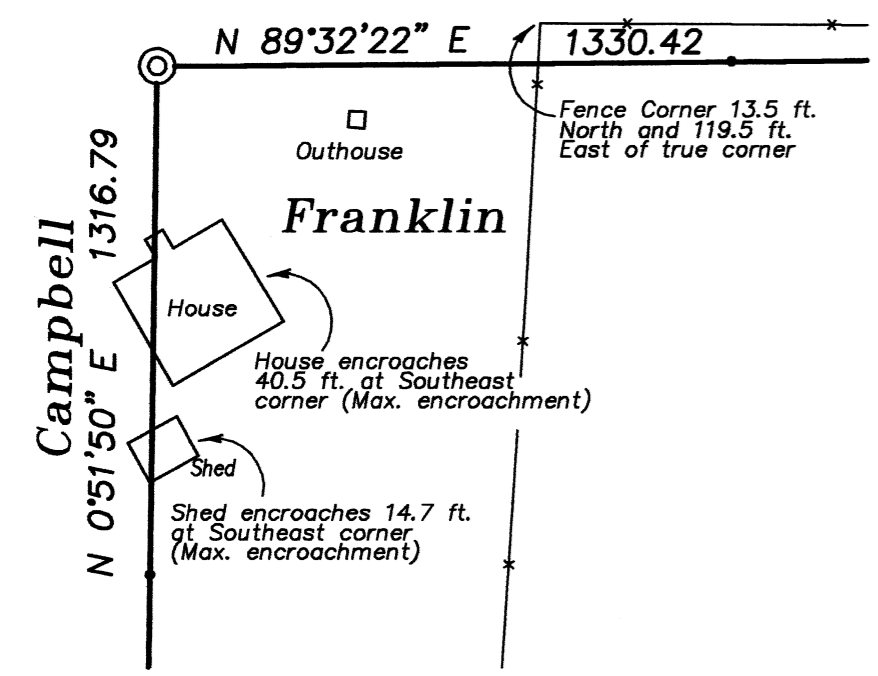
- Original GLO Contract Number 102 by Timothy W. Davenport dated July 20, 1863
- Original GLO Contract Number 388 by W.B. Barr dated May 7, 1881
- Union County monumentation records
- Survey Number 48-80

LEGEND

- Found 2 1/2" brass cap monument set by survey number 48-80
- ◐ Found 2 1/2" aluminum monument as per Union County Monumentation records
- ⊙ Found 3" brass cap monument as per Union County Monumentation records
- ⊙ Set 5/8" x 30" iron pin with 2 1/2" aluminum cap at position determined by survey
- Set steel fence post along Franklin property line
- x— Existing fence line
- ▨ Posted lines along Franklin ownership
- [] Record information of GLO Contract Number 102 (Davenport)
- () Record information of GLO Contract Number 388 (Barr)
- { } Record information of Survey Number 48-80

NARRATIVE

This survey was done at the request of Wendy Franklin. The purpose of this survey was to monument the property corners and mark selected lines of the ownership. The South and West lines of this Section were monumented by survey number 48-80. The North 1/4 corner of the Section was monumented in 1975 from original GLO survey evidence. The Northeast corner and East 1/4 corner were also monumented from GLO evidence. I then subdivide the section according to the BLM Manual of Surveying Instructions. I find the fence line along the common border with Franklin and Mellinger to encroach onto the Franklin ownership as shown. I also find an encroachment of the Campbell House, shed and outhouse near the Center-North 1/16th corner of Section 32 as shown. I placed steel fence posts at approximately 250 ft. intervals along all of the Franklin ownership except the South line, which was posted with survey number 48-80. I encountered no other unusual conditions on this survey.



Encroachment Detail Scale 1" = 60'

REGISTERED
PROFESSIONAL
LAND SURVEYOR
Rick G. Robinson
OREGON
JULY 17, 1988
RICK G. ROBINSON
2219
Renewal Date: Dec. 31, 2004

UNION COUNTY
SURVEYOR
Date Received 7/16/03
Date Filed 9/12/03
By [Signature]
File No. 020-2003

BAGETT, GRIFFITH & BLACKMAN 2006 Adams Avenue, LaGrande, Oregon Map of Survey		
Subdivision of Section 32, Township 4 South, Range 38 East of the Willamette Meridian.		
UNION COUNTY, OREGON		
SURVEYED FOR	Wendy Franklin	
SURVEYED BY	R.G.R.	7/2003
Scale: 1" = 600'	Drawn by: R.G.R.	7/2003