

RECORD OF SURVEY

IN A PORTION OF THE SOUTHEAST QUARTER
OF SECTION 1, TOWNSHIP 3 SOUTH, RANGE
37 EAST, WILLAMETTE MERIDIAN,
UNION COUNTY, OREGON




SURVEYORS NARRATIVE:

THE PURPOSE OF THIS SURVEY WAS TO SHOW THE POSITION OF A 5/8" X 30" IRON ROD WITH A YELLOW PLASTIC CAP STAMPED "RENTON PLS 2830" IN RELATION TO THE NORTHEAST AND SOUTHEAST CORNERS OF SECTION 12, TOWNSHIP 3 SOUTH, RANGE 37 EAST, WILLAMETTE MERIDIAN. THE SAID IRON ROD WAS SET TO BE USED AS A REFERENCE POINT IN DESCRIBING DEAL CANYON ROAD FOR UNION COUNTY CIRCUIT COURT CORRECTED STIPULATED JUDGEMENT, CASE NUMBER Q11041037C.

THE POSITION OF SAID NORTHEAST AND SOUTHEAST CORNERS WERE DETERMINED BY USING A TRIMBLE 4700 RTK ROVER WITH A TRIMBLE 4000SSE AND TRIMMARK IIE BASE AND RADIO, SET AT COOPERATIVE BASE NETWORK CONTROL STATION (CBNC) "BLUE MOUNTAIN CBL 0 (PID RB1490) AND PRIMARY AIRPORT CONTROL STATION (PAC) "LGD A" (PID AD9166). DOUBLE TIES WERE MADE TO SAID NORTHEAST AND SOUTHEAST CORNERS.

THE POSITION OF THE SET IRON ROD WAS DETERMINE BY USING A TRIMBLE 4000SSE COLLECTING STATIC DATA FOR A 3 HOUR SESSION AND PROCESSING THE POSITION USING THE NATIONAL GEODETIC SURVEY (NGS) ONLINE POSITIONING USER SERVICE (OPUS).

LEGEND:

-  INDICATES MONUMENT FOUND AS NOTED.
-  INDICATES COMPUTED POSITION AS NOTED.
-  INDICATES 5/8" x 30" IRON ROD WITH YELLOW PLASTIC CAP STAMPED "RENTON PLS 2830" SET OCTOBER 5, 2002.
- (R) INDICATES RECORD DATA.
- RP INDICATES REFERENCE POINT.

SURVEY REFERENCE:

1. JEFFERY P. PETERSEN SURVEY, UNION COUNTY SURVEY FILE NUMBER 009-1996

SURVEYOR'S CERTIFICATE

THIS MAP CORRECTLY REPRESENTS A SURVEY MADE BY ME OR UNDER MY DIRECTION IN CONFORMANCE WITH THE REQUIREMENTS OF THE SURVEY RECORDING ACT AT THE REQUEST OF DOUG BEAN IN OCTOBER 2002.

Daniel A. Renton 07/25/03
DANIEL ADOLPH RENTON
PROFESSIONAL LAND SURVEYOR, LS #2830

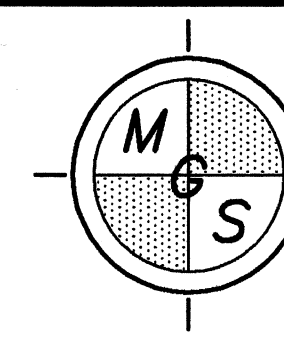
REGISTERED
PROFESSIONAL
LAND SURVEYOR

Daniel A. Renton
OREGON
JUNE 30, 1997
DANIEL A. RENTON
2830

Expires 12-31-2004
07/25/03

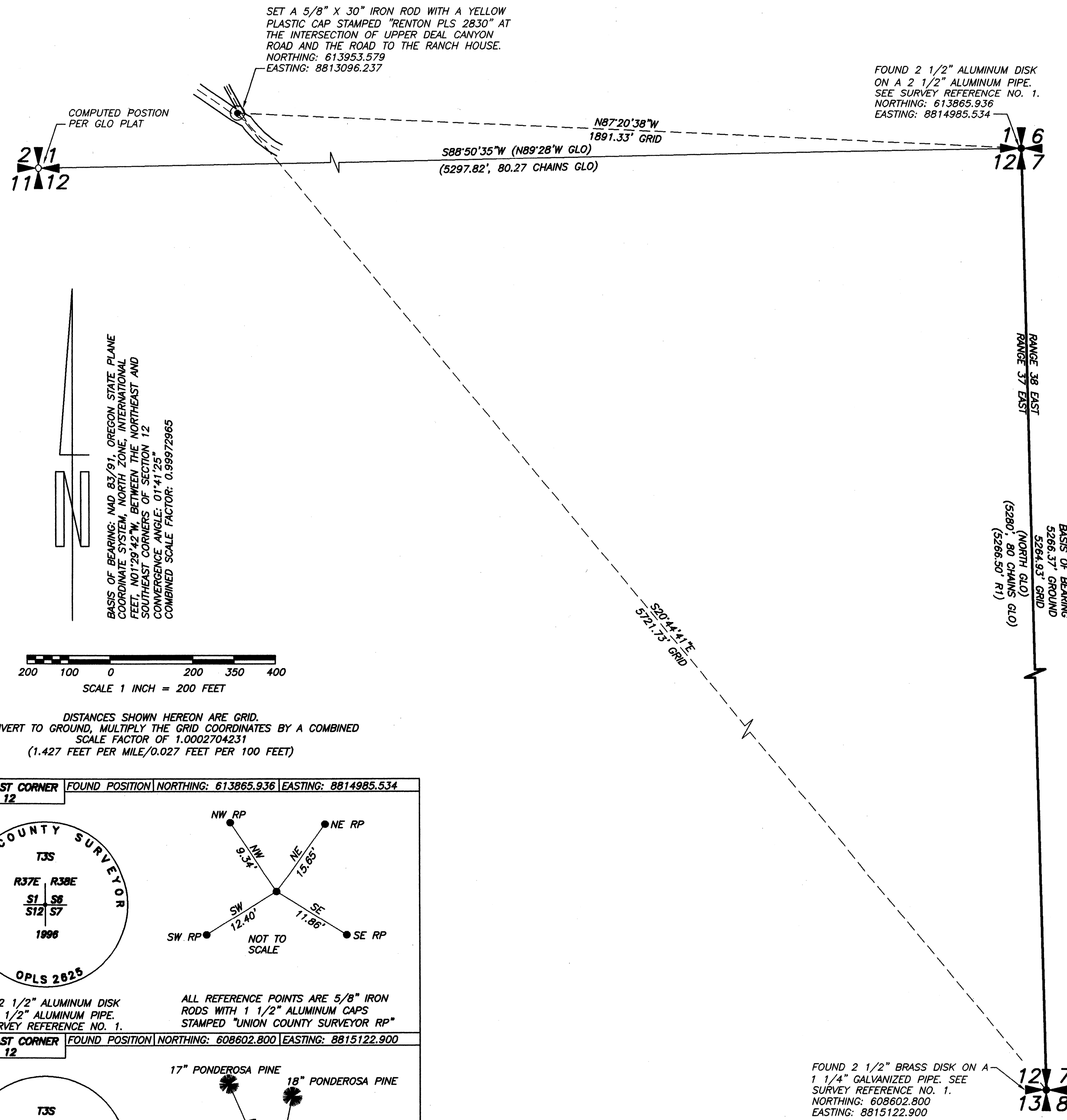
UNION COUNTY
SURVEYOR
Date Received 8/6/03
Date Filed 9/12/03
By *Hyun T. Lee*
File No. 002-2003

SCALE: 1"=200'
JOB NO. 01-184
DATE: 07-25-03
CALC BY: DAR
DRAWN BY: DAR
CHECKED BY: JUS
SHEET 1 OF 1



MINISTER-GLAESER
SURVEYING INC.
2200 E. EVERGREEN BLVD.
VANCOUVER, WA 98661
(360) 694-3313

SURVEY NUMBER 002-2003



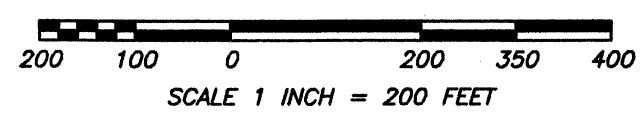
SET A 5/8" X 30" IRON ROD WITH A YELLOW PLASTIC CAP STAMPED "RENTON PLS 2830" AT THE INTERSECTION OF UPPER DEAL CANYON ROAD AND THE ROAD TO THE RANCH HOUSE.
NORTHING: 613953.579
EASTING: 8813096.237

FOUND 2 1/2" ALUMINUM DISK ON A 2 1/2" ALUMINUM PIPE. SEE SURVEY REFERENCE NO. 1.
NORTHING: 613865.936
EASTING: 8814985.534

RANGE 37 EAST
RANGE 38 EAST
BASIS OF BEARING
5266.37' GROUND
5264.93' GRID
(NORTH GLO)
(S266.50' R1)
(S266.50' R1)

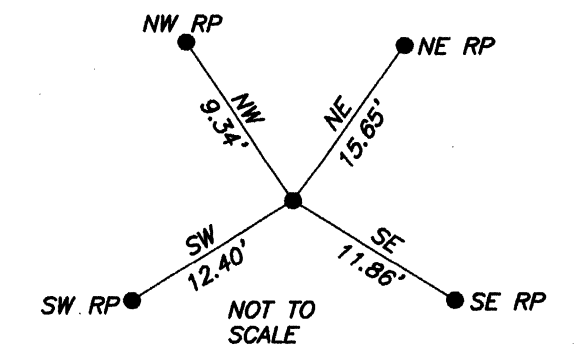
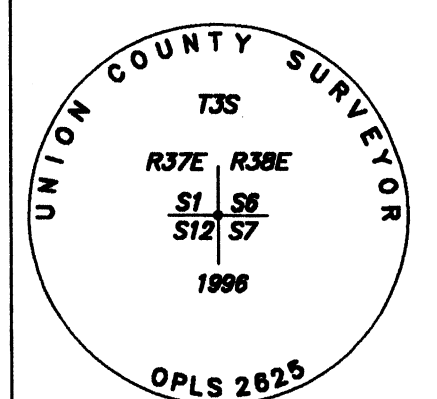
FOUND 2 1/2" BRASS DISK ON A 1 1/4" GALVANIZED PIPE. SEE SURVEY REFERENCE NO. 1.
NORTHING: 608602.800
EASTING: 8815122.900

BASIS OF BEARING: NAD 83/91, OREGON STATE PLANE COORDINATE SYSTEM, NORTH ZONE, INTERNATIONAL FEET, N01°29'42"W, BETWEEN THE NORTHEAST AND SOUTHEAST CORNERS OF SECTION 12
CONVERGENCE ANGLE: 01°41'25"
COMBINED SCALE FACTOR: 0.99972965



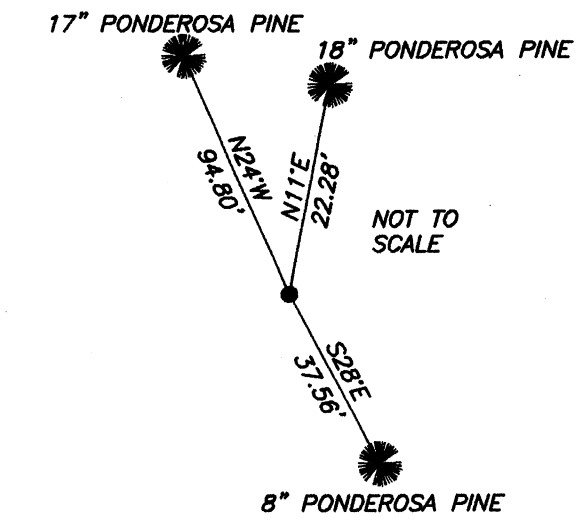
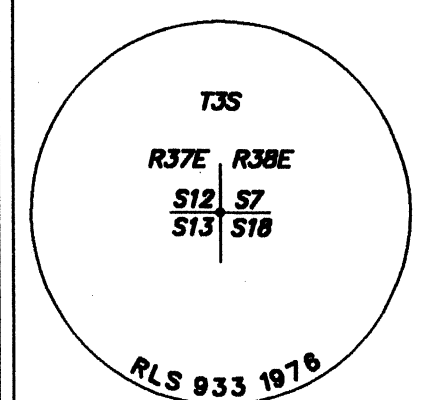
DISTANCES SHOWN HEREON ARE GRID. TO CONVERT TO GROUND, MULTIPLY THE GRID COORDINATES BY A COMBINED SCALE FACTOR OF 1.0002704231 (1.427 FEET PER MILE/0.027 FEET PER 100 FEET)

NORTHEAST CORNER SECTION 12 FOUND POSITION NORTHING: 613865.936 EASTING: 8814985.534



FOUND 2 1/2" ALUMINUM DISK ON A 2 1/2" ALUMINUM PIPE. SEE SURVEY REFERENCE NO. 1. ALL REFERENCE POINTS ARE 5/8" IRON RODS WITH 1 1/2" ALUMINUM CAPS STAMPED "UNION COUNTY SURVEYOR RP"

SOUTHEAST CORNER SECTION 12 FOUND POSITION NORTHING: 608602.800 EASTING: 8815122.900



FOUND 2 1/2" BRASS DISK ON A 1 1/4" GALVANIZED PIPE. SEE SURVEY REFERENCE NO. 1.

GRID COORDINATE TABLE
NAD 83/91 OREGON STATE PLANE COORDINATE SYSTEM NORTH ZONE-INTERNATIONAL FEET

613865.936	8814985.534	NE CORNER SEC 12
608602.800	8815122.900	SE CORNER SEC 12
608902.453	8828543.952	BLUE MOUNTAIN CBL 0
603190.525	8842188.491	LGD A

MINISTER AND GLAESER SURVEYING, INC. MAKES NO WARRANTIES AS TO MATTERS OF UNWRITTEN TITLE SUCH AS ADVERSE POSSESSION, ACQUIESCENCE, ESTOPPLE, ETC. ALL CORNERS NOTED AS FOUND WERE TIED USING A TRIMBLE 4700 REAL TIME KINEMATIC GPS (RTK-GPS). THE TWO CONTROLLING GEODETIC CONTROL POINTS USED FOR THIS PROJECT WERE COOPERATIVE BASE NETWORK CONTROL STATION (CBNC) "BLUE MOUNTAIN CBL 0" (PID RB1490) AND PRIMARY AIRPORT CONTROL STATION (PAC) "LGD A" (PID AD9166). ALL FOUND MONUMENTS VISITED ON SEPTEMBER 11&12, 2001

DWG FILE: 01184ROS.DWG