

BASIS OF BEARING

Forward bearing as published by the U.S.C. and G.S. from Δ COLLEGE to Δ VALLEY Dated 1946.

SCALE: 1" = 1000'

LEGEND

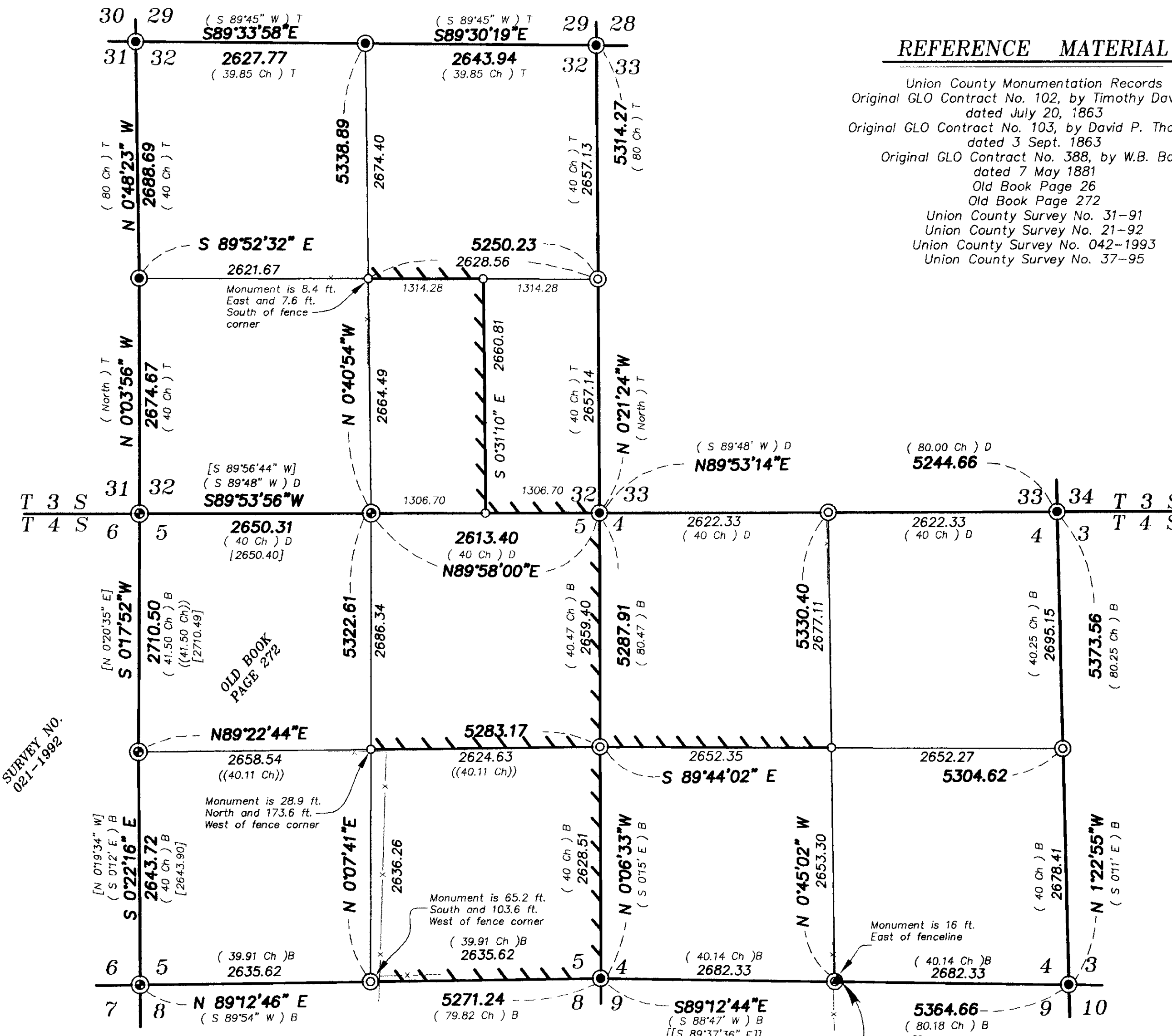
- Δ Found 2 1/2" aluminum monument set by Survey No. 42-1993
- \odot Found 2 1/2" aluminum monument as per Union County Monumentation Records
- \oplus Found 2 1/2" brass cap as per Union County Monumentation Records
- \circ Set 2" aluminum cap on 5/8"x30" iron pin, see Union County Monumentation Records
- \odot Set 2 1/2" aluminum monument see Union County Monumentation Records
- x-x- Existing fence line
- /// Posted line
- () D Record measurement of GLO contract No. 102, by Timothy Davenport, dated July 20, 1863.
- () T Record measurement of GLO contract No. 103, by David P. Thompson, dated 3 Sept. 1863
- () B Record measurement of GLO contract No. 388, by W. B. Barr, dated 7 May 1881
- (()) Record measurement of Old Book Page 272
- [] Record measurement of Survey No. 21-1992
- [[]] Record measurement of Survey No. 37-1995

REFERENCE MATERIAL

Union County Monumentation Records
 Original GLO Contract No. 102, by Timothy Davenport dated July 20, 1863
 Original GLO Contract No. 103, by David P. Thompson, dated 3 Sept. 1863
 Original GLO Contract No. 388, by W.B. Barr, dated 7 May 1881
 Old Book Page 26
 Old Book Page 272
 Union County Survey No. 31-91
 Union County Survey No. 21-92
 Union County Survey No. 042-1993
 Union County Survey No. 37-95

NARRATIVE

This survey was performed at the request of Stan Wilde on behalf of Boise Building Solutions. Mr. Wilde wanted to monument and post lines as shown on the attached map. I tied all the existing aliquot corners in Sections 32, 4, and 5. The East 1/4 of Section 32 falls in a heavily logged area and I found no evidence of the original corner. The South 1/4 of Section 5 was heavily logged and there was no evidence of the original corner. Old Book Page 272 set a stone at the Center of the Section 5. This Survey set the corner by proportioning between the East and West 1/4 corners of Section 5. I did not search for this corner because the corner was not established by the proper BLM methods. I set the corner at the intersection of the 1/4 lines as per the BLM manual. Section 4 was heavily logged. No evidence of the original corners remained and I had to proportion in the North, East, West, and South 1/4 corners. Survey No. 42-1993 set a monument for the South 1/4 of Section 4 by running record bearing and distance from the Northwest corner of Section 5. I proportioned the corner as per the BLM manual and general surveying practice. The fences are away from the property corners as shown. I find no other problems with this survey.



Monument set by Survey Number 042-1993 is 13'± North and 35'± East of proportionate position. Downed fenceline is 16 ft. West of proportionate position

SURVEY NO. 042-1995 & 042-1993

UNION COUNTY SURVEYOR

Date Received 7/22/02

Date Filed 7/22/02

By R. ROBINSON, Deputy

File No. 026-2002

REGISTERED PROFESSIONAL LAND SURVEYOR

GREGORY T. BLACKMAN

JULY 13, 1973

991

Renewal Date: Dec. 31, 2003

BAGETT, GRIFFITH & BLACKMAN

2006 Adams Avenue, LaGrande, Oregon

Map of Survey

Situated in Section 32, Township 3 South, and Sections 4 and 5, Township 4 South, Range 38 East of the Willamette Meridian

UNION COUNTY, OREGON

SURVEYED FOR	BOISE CORPORATION, (FORESTRY)	
SURVEYED BY	G.T.B.	7/2002
Scale: 1" = 1000'	Drawn by: N.W.V.	7/2002

SURVEY NO. 26-2002