

SCALE: 1"=50'  
BASIS OF BEARING

Forward bearing as published by the U.S.C.  
and G.S. from Δ COLLEGE to Δ VALLEY  
Dated 1946.

LEGEND

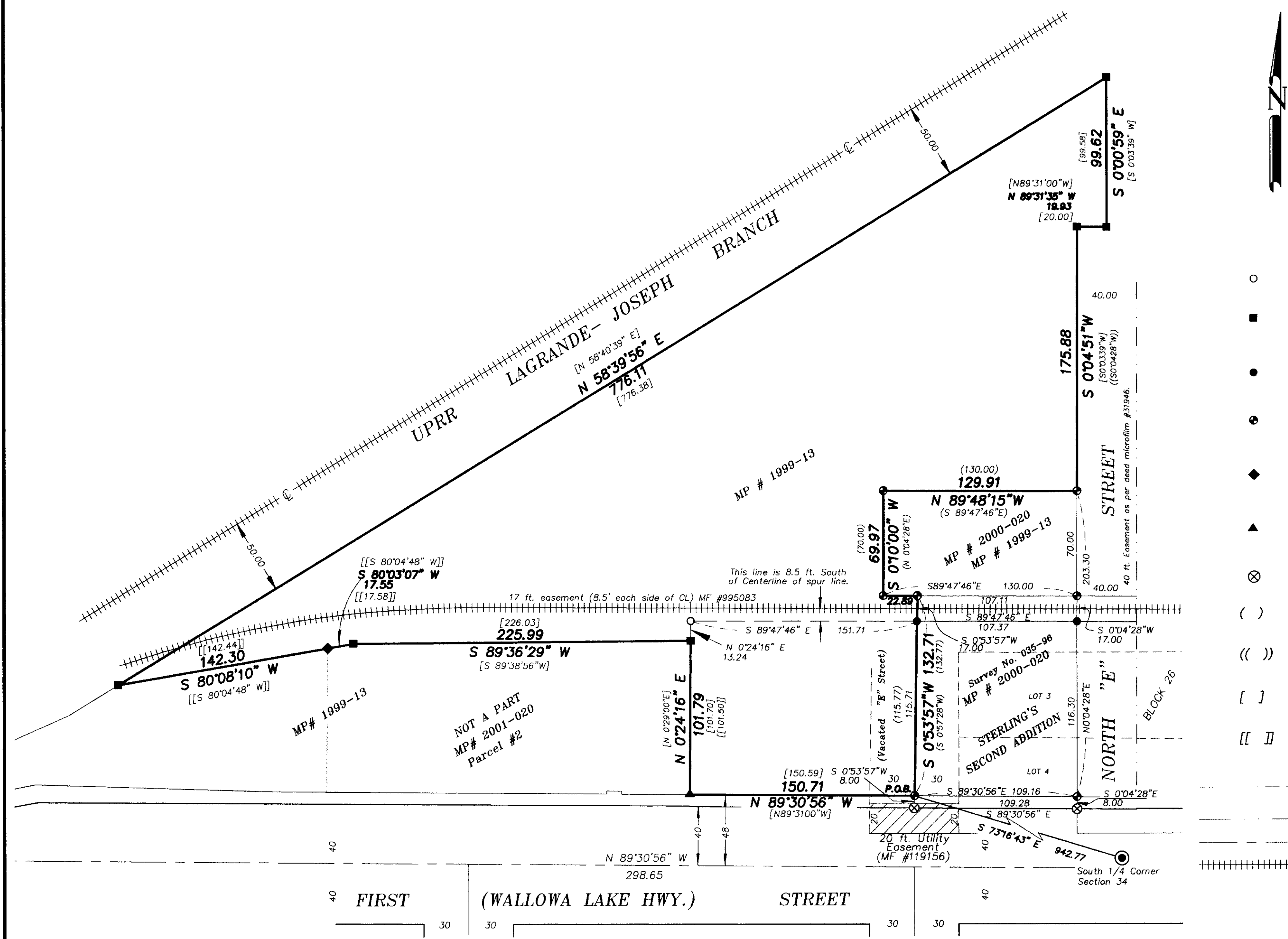
- Set 5/8" x 30" rebar with plastic yellow cap marked "BGB SURVEY MARKER"
- Found 5/8" rebar with plastic yellow cap marked "APA" set by Minor Partition number 1999-13.
- Found 5/8" rebar with plastic yellow cap marked "BGB SURVEY MARKER" set by Survey Number 035-1996.
- ⊙ Found 5/8" rebar with plastic yellow cap marked "BGB SURVEY MARKER" set by Minor Partition Number 2000-20.
- ◆ Found concrete nail with steel washer marked "APA" in asphalt, set by Minor Partition number 2001-020.
- ▲ Found concrete nail with steel washer marked "APA" in asphalt. (Note Minor Partition 1999-13 set 5/8 iron pin with yellow cap).
- ⊗ Found cross chiseled in sidewalk by Survey Number 035-1996.
- ( ) Record Bearing or distance from Minor Partition number 2000-20.
- (( )) Record Bearing or distance from Survey number 035-1996..
- [ ] Record Bearing or distance from Minor Partition number 1999-13.
- [[ ]] Record Bearing or distance from Minor Partition number 2001-020.

Original Lot line of Sterling's Second Addition to Island City.

Easement line

Centerline

Railroad Track



NARRATIVE

This Survey was performed at the request of Anna Canavan of Railroad Realty on behalf of UNION PACIFIC RAILROAD. Originally Mrs. Canavan ordered a partition, however to date, UPRR has not signed the partition to complete the Partition process and a survey is needed to be filed to record corners that I had already set. The exterior corners were monumented by Parcel 2 of Minor Partition 1999-13. As per instructions I used these monuments and set the North line of Parcel 2 of this Survey within 8.5 feet of the existing spur line. I find no unusual conditions on this Survey.

REFERENCE MATERIAL

Survey number 035-1996 Survey number 059-1994  
Survey number 015-1999 Survey number 005-1992  
Minor Partition 2000-20 Minor Partition 1999-13  
Minor Partition 2001-020

DEED REFERENCES

MF#995083  
MF#119156 MF#38414  
MF#108542 MF#109626  
MF#110443 MF#133466  
MF#117776 MF#119062  
MF#119156 MR#31946  
Book P Page 203  
EOT Title Report #01-12319

REGISTERED  
PROFESSIONAL  
LAND SURVEYOR

*Gregory T. Blackman*  
OREGON  
JULY 13, 1973  
GREGORY T. BLACKMAN  
991

Renewal Date: Dec. 31, 2003

UNION COUNTY  
SURVEYOR

Date Received 7/16/02

Date Filed 7/22/02

By R. ROBINSON, DEPUTY

File No. 025-2002

BAGETT, GRIFFITH & BLACKMAN  
2006 Adams Avenue, LaGrande, Oregon  
Map of Survey

Situated in the South 1/2 of the Southwest  
1/4 of Section 34, Township 2 South, Range  
38 East of the Willamette Meridian

UNION COUNTY, OREGON

SURVEYED FOR	UNION PACIFIC RAILROAD	
SURVEYED BY	G.T.B.	7/2002
Scale: 1" = 50'	Drawn by: G.T.	7/2002

SURVEY NO. 25-2002