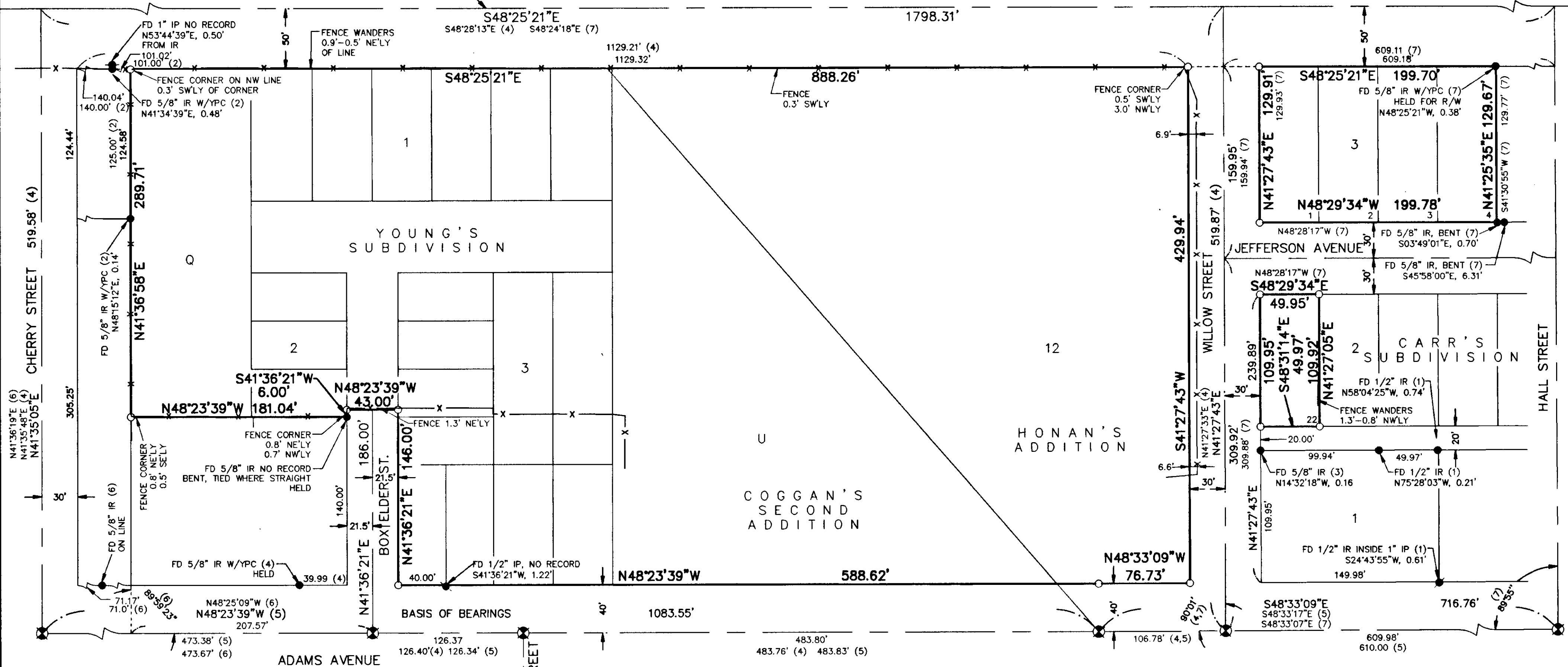


RECORD OF SURVEY

SITUATE IN THE N.E. 1/4 OF SECTION 8,
TOWNSHIP 3 SOUTH, RANGE 38 EAST OF THE WILLAMETTE MERIDIAN,
IN THE CITY OF LA GRANDE, UNION COUNTY, OREGON

SCALE: 1"=60'

CENTERLINE SPLIT OF RAILS MAIN LINE O-W R&N CO.



REFERENCE SURVEYS

NOTE: ALL SURVEYS RECORDED AT UNION COUNTY SURVEYOR'S OFFICE.

- (1) 32-65
- (2) 1-72
- (3) 58-75
- (4) 41-82
- (5) 13-88
- (6) 6-90
- (7) 004-2001

PLAT OF YOUNG'S SUBDIVISION
PLAT OF CARR'S SUBDIVISION
PLAT OF COGGAN'S SECOND ADDITION
PLAT OF HONAN'S ADDITION

LEGEND

- FOUND IRON PIPE AS NOTED
- FOUND IRON ROD AS NOTED
- ⊕ FOUND 2 1/2" BRASS DISK MARKED "BAGGET-GRIFFITH & ASSOC. OPLS 644"
- SET 5/8" X 30" IRON ROD WITH YELLOW PLASTIC CAP MARKED "WESTLAKE CONSULTANTS"
- x— FENCE LINE
- IP IRON PIPE
- IR IRON ROD
- W/YPC WITH YELLOW PLASTIC CAP
- (#) REFERENCE SURVEY NUMBER, SEE TABLE

NARRATIVE

THE PURPOSE OF THIS SURVEY IS TO MONUMENT THE EXTERIOR BOUNDARIES OF THOSE TRACTS OF LAND CONVEYED BY DEED AND RECORDED AS DOCUMENT NO'S. 996160, 20001421, 20002027, 20002540, AND 20002948. FOR A BASIS OF BEARINGS, HELD ADAMS AVENUE CENTERLINE MONUMENTS FROM CHERRY STREET SOUTHEAST TO AN ANGLE POINT, BEING N48°23'39" WEST AS PER UNION COUNTY SURVEY NO. 13-88. ALSO, HELD ADAMS AVENUE CENTERLINE MONUMENTS AT WILLOW STREET AND HALL STREET, TO ESTABLISH THE MOST SOUTHWEST LINE, HELD 40 FEET NORTHEAST OF ADAMS AVENUE CENTERLINE. TO ESTABLISH THE MOST SOUTHWEST LINE, HELD 40 FEET NORTHEAST OF ADAMS AVENUE CENTERLINE INTERSECTION MONUMENT AND 21.5 FEET SOUTHEAST OF THE MONUMENT AT SOUTH CORNER LOT 3, BLOCK 2, YOUNG'S SUBDIVISION, AND HOLDING RECORD WIDTH OF 43.00 FEET AND EXTENDING NORTHEAST FROM ADAMS AVENUE THE PLAT RECORD LOT DISTANCE OF 140 FEET PLUS 6 FEET AS PER VACATION D.V. 145-391. THE SOUTHWEST LIMIT OF A PORTION OF BLOCK Q, COGGAN'S SECOND ADDITION, WAS ESTABLISHED PARALLEL WITH ADAMS AVENUE THROUGH SAID MONUMENT AT SOUTH CORNER LOT 3. THE NORTHWEST LINE WAS ESTABLISHED AT RECORD ANGLE AND DISTANCE FROM ADAMS AVENUE AND BOX ELDER STREET INTERSECTION MONUMENT AS PER UNION COUNTY SURVEY 6-90. THE NORTHEAST LINE, BEING THE SOUTHWEST RIGHT-OF-WAY OF A 100 FOOT WIDE RAILROAD, WAS ESTABLISHED BY HOLDING THE CENTERLINE SPLIT OF MAIN RAILS AND THE MONUMENT AT THE EAST CORNER OF LOT 4, BLOCK 3, CARR'S SUBDIVISION. WILLOW STREET WAS ESTABLISHED AT RECORD ANGLE FROM ADAMS AVENUE THROUGH CENTERLINE INTERSECTION MONUMENT AS PER UNION COUNTY SURVEY 41-82. JEFFERSON AVENUE AND THE ALLEY IN BLOCK 1, CARR'S SUBDIVISION WERE ESTABLISHED AT PROPORTIONED DISTANCES ALONG WILLOW STREET AND HALL STREET BETWEEN ADAMS AVENUE AND RAILROAD AS ESTABLISHED ABOVE. HALL STREET WAS ESTABLISHED AT RECORD ANGLE FROM ADAMS AVENUE THROUGH CENTERLINE INTERSECTION MONUMENT AS PER UNION COUNTY SURVEY 4-2001. ALSO, HELD PROPORTIONED DISTANCES BETWEEN WILLOW STREET AND HALL STREET FOR THE LOT WIDTHS.

REGISTERED PROFESSIONAL LAND SURVEYOR

OREGON
JULY 25, 1990
GARY R. ANDERSON
2434

12-31-01
RENEWAL DATE

SURVEYED FOR:
SAFeway STORES, INC.

SURVEYED BY:
WESTLAKE CONSULTANTS, INC.
15115 S.W. SEQUOIA PARKWAY, SUITE 150
TIGARD, OREGON 97224
(503)684-0652

679-03

SHEET 1 OF 1

Survey No. 026-2001

67903B.DWG

7/13/01
9/10/01
Hoyt Black
026-2001