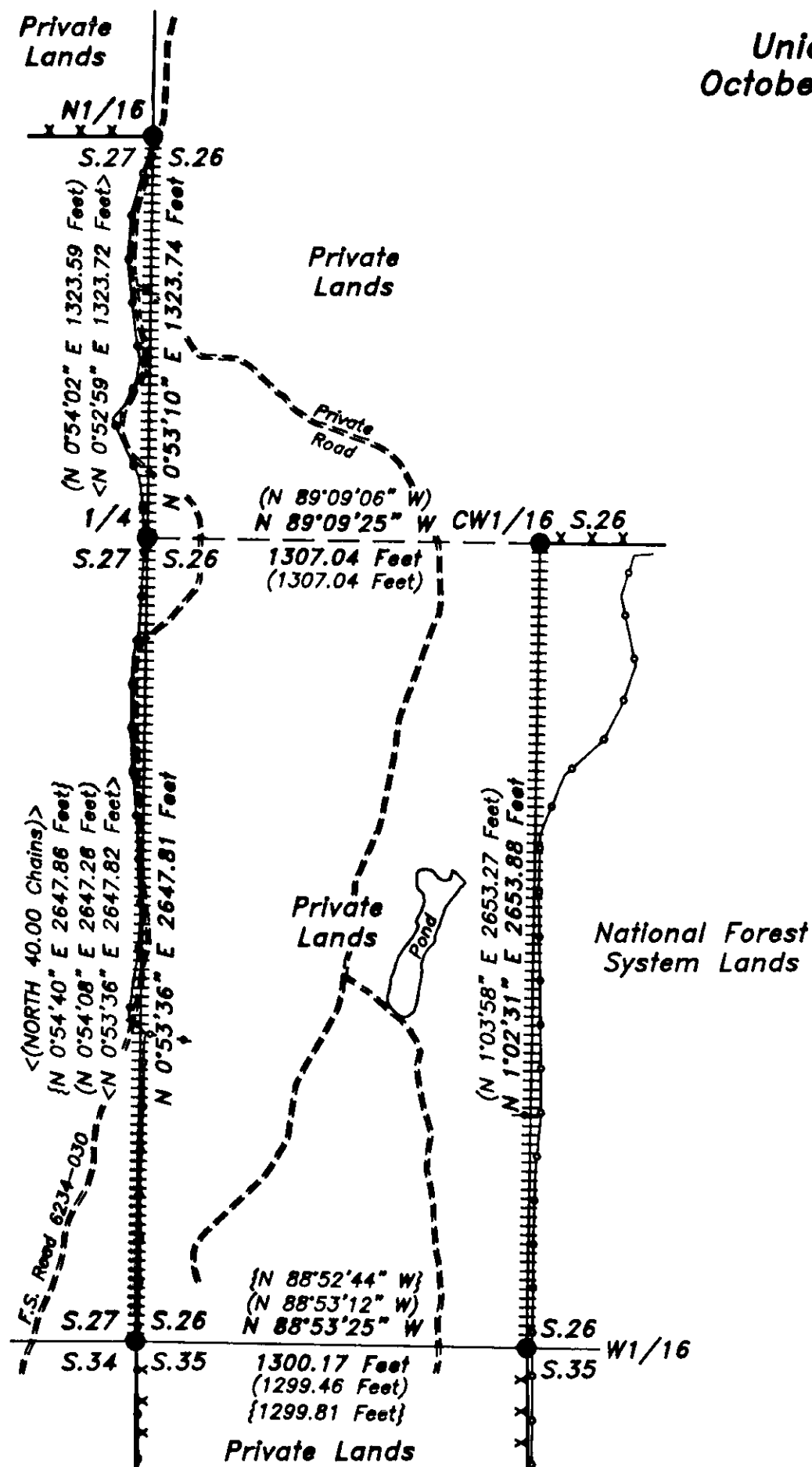
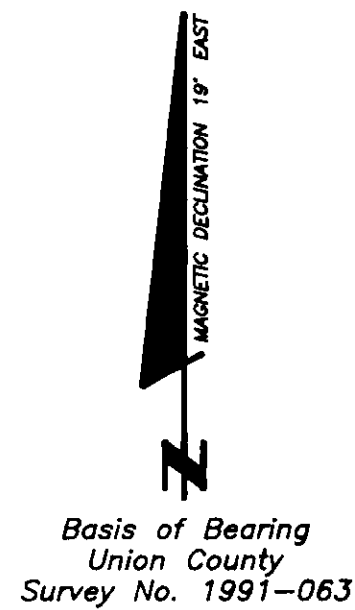
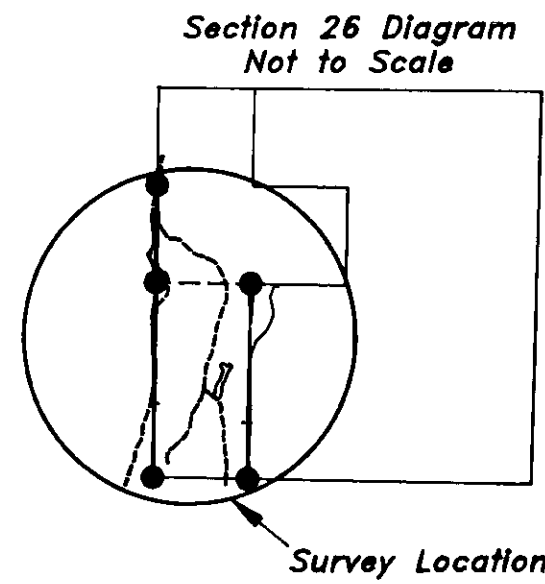
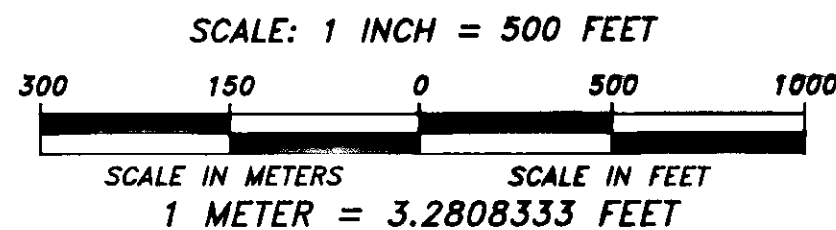


**Survey for
Umatilla National Forest
of the
West Half of the Southwest Quarter
of Section 26,
T. 4 N., R. 40 E., W.M.
Located in
Union County, Oregon
October - November, 2000**



LEGEND

- MONUMENT FOUND
- FENCE
- ++++ PROPERTY BOUNDARY MAINTAINED
- xxx PROPERTY BOUNDARY PREVIOUSLY POSTED
- <()> RECORD MEASUREMENT <(CAMPBELL 1884)>
- { } RECORD MEASUREMENT {HANLEY 1975 - 1976}
- () RECORD MEASUREMENT (BARBOUR 1981)
- < > RECORD MEASUREMENT <BISHOP 1991>



REVIEWED BY:
Mike Schwartz 3-02-2001
SIGNATURE DATE

I CERTIFY THAT THIS SURVEY WAS PERFORMED AT THE
REQUEST OF THE UMATILLA NATIONAL FOREST.

Jeff Mahood 3/2/01
FOREST SUPERVISOR DATE

PURPOSE:

The purpose of this survey was to maintain the posted Property Boundary between Private and National Forest System Lands.

HISTORY:

1884, Frank W. Campbell, U.S. Deputy Surveyor, subdivided T. 4 N., R. 40 E. under General Land Office Contract No. 507.

1973, Ralph P. Thompson, Registered Land Surveyor No. 506, remonumented the corner of sections 26, 27, 34 and 35 (Filed Form R6-7100-57 (9/66) at Union County Surveyor's Office 06/27/1973).

1975 - 1976, James D. Hanley, Registered Professional Engineer No. 2808, surveyed sections 21, 22, 23, 26, 27 and 28 (Union County Survey No. 1976-047).

1981, Barry B. Barbour, Registered Land Surveyor No. 1051, surveyed sections 23, 26 & 35 (Union County Survey No. 1981-062).

1991, Larry D. Bishop, Registered Land Surveyor No. 896, surveyed sections 22 and 27 (Union County Survey No. 1991-063).

PROCEDURES:

This survey was conducted using a Topcon GTS-4 Total Station. The basis of bearing for this survey is Larry D. Bishop's 1991 record bearing of the section line from the corner of sections 26, 27, 34 and 35 to the 1/4 corner of sections 26 and 27 (Union County Survey No. 1991-063).

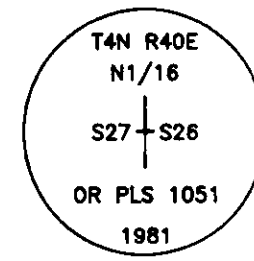
The Property Boundary was maintained by setting 6 foot U channel steel posts on the property boundary where existing steel fence posts were missing. Both the new and existing posts have metal "National Forest Land" signs attached and are set within 1 foot of the surveyed boundary with a maximum distance between posts of 280 feet.

Bearing trees were tied using the Topcon GTS-4 Total Station and distance measurements were taken at side center one foot above the root crown. The new bearing tree is double blazed and has a 3/4" diameter brass washer stamped "RLS 2308" nailed to the lower blaze near the "BT" scribing.

Field notes for this survey are on file at the Supervisor's Office of the Umatilla National Forest located at Pendleton, Oregon.

N 1/16 Corner of Sections 26 and 27

Found a 2 1/2" iron pipe with a 2 1/2" brass cap, projecting 4" out of the ground, surrounded by a ring of stones, marked as shown, from which:
16" Subalpine Fir, S 41° E, 48.7 feet, with scribing visible on partially healed blaze.
11" Western Larch, S 52 1/4' W, 43.0 feet, with scribing visible on partially healed blaze and with a 1 1/4" brass washer stamped "PLS 1051" nailed to the lower end of the blaze.



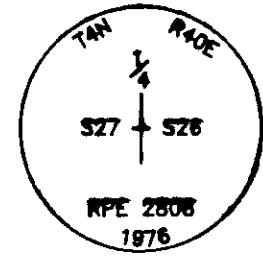
I, David A. Schlaich, a Registered Land Surveyor in the state of Oregon, hereby certify that this plat and the notes hereon are a true and correct representation of a survey I conducted from October 18 to November 15 of 2000, at the request of the Umatilla National Forest, in accordance with the statutes of the state of Oregon and the Bureau of Land Management's 1973 Manual of Surveying Instructions.

David A. Schlaich
DAVID A. SCHLAICH -- RLS 2308
UMATILLA NATIONAL FOREST
2517 S.W. HAILEY AVENUE
PENDLETON, OREGON 97801
PHONE: (541) 278-3716

NARRATIVE:

1/4 Corner of Sections 26 and 27

Found a 2 1/2" iron pipe, with a 2 1/2" brass cap, projecting 4" out of the ground, marked as shown, from which:
12" White Fir, N 67 3/4' E, 43.7 feet, with scribing visible on partially healed blaze and 1" brass washer stamped "PLS 896" nailed to the lower end of the blaze.
11" Western Larch, S 62 3/4' E, 56.5 feet, with healed double blaze.
11" Western Larch Snag, S 50' W, 17.3 feet, with scribing visible on partially healed double blaze and 5/8" brass washer stamped "RPE 2808" nailed to lower blaze.
10" Western Larch, S 67 1/2' W, 10.2 feet, with scribing visible on partially healed double blaze.

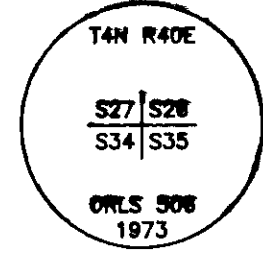


Marked New BT:

8" Western Larch, N 63 1/4' W, 70.1 feet, scribed "1/4 S27" BT.

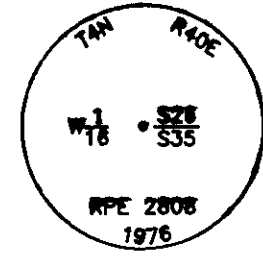
Corner of Sections 26, 27, 34 and 35

Found a 1 1/2" iron pipe, with a 2 1/2" brass cap, projecting 2" out of the ground, marked as shown, from which:
17" Douglas Fir, N 26° E, 33.6 feet, with healed double blaze.
23" Fir Snag, N 43 3/4' E, 45.1 feet, with chopped open blaze.
15" Englemann Spruce, S 64° E, 18.8 feet, with healed double blaze.
40" rotted Douglas Fir Snag, S 7 1/2' E, 31.2 feet.
31" Fir Snag, S 54 1/2' W, 61.8 feet, with healed blaze.
15" Englemann Spruce, S 60 1/4' W, 52.7 feet, with healed double blaze.
24" Douglas Fir, N 23 1/2' W, 46.5 feet, with healed double blaze.



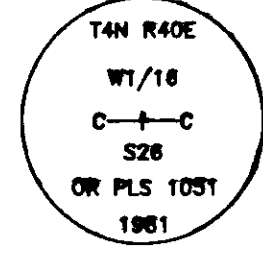
W1/16 Corner of Sections 26 and 35

Found a 2 1/2" iron pipe, with 2 1/2" brass cap, projecting 6" out of the ground, marked as shown, from which:
14" Douglas Fir, N 3° E, 9.8 feet, with healed double blaze.
13" Douglas Fir, S 75° E, 9.5 feet, with healed double blaze.



CW1/16 Corner of Section 26

Found a 2 1/2" iron pipe, with 2 1/2" brass cap, projecting 7" out of the ground, marked as shown, from which:
14" Lodgepole Pine, S 73 1/4' E, 302.0 feet, with scribing visible on partially healed double blaze and 1 1/4" diameter brass washer stamped "PLS 1051" nailed to the lower blaze.
24" Englemann Spruce, S 68° W, 343.5 feet, with scribing visible on an almost completely healed double blaze.



UNION COUNTY SURVEYOR

Date Received 3/15/01

Date Filed 3/31/01

By R. ROBINSON, DEAN

File No. 013-2001

REGISTERED PROFESSIONAL LAND SURVEYOR

David A. Schlaich
OREGON
JULY 16, 1987
DAVID A. SCHLAICH
2308

RENEWAL DATE: 06/30/2002