

REFERENCE MATERIAL

UNION COUNTY MONUMENTATION RECORDS

Original GLO contract No. 103, by David P. Thompson, dated September 3, 1863.

UNION COUNTY SURVEYS

- Survey No. 16-73
- Survey No. 40-79
- Survey No. 46-79
- Survey No. 5-80
- Survey No. 49-81
- Survey No. 21-83
- Survey No. 7-84
- Survey No. 10-84
- Survey No. 11-84
- Survey No. 31-84
- Survey No. 49-84
- Survey No. 1-86
- Survey No. 13-86
- Survey No. 22-88
- Survey No. 27-89
- Survey No. 29-89
- Survey No. 57-91
- Survey No. 047-1993
- Survey No. 051-1993
- Survey No. 036-1994
- Survey No. 044-1995
- Survey No. 008-1996
- Survey No. 018-1996
- Survey No. 014-1997
- Survey No. 021-1999
- Survey No. 022-1999

UNION COUNTY PLATS

Minor Partition No. MF#1994-013
Minor Partition No. MF#1997-027

SCALE FACTORS

Average Projection Scale .99989734281
Average Elevation Scale .99984930308
Combined Average Scale .99974666136

BASIS OF BEARING

Bearing as determined by using published NAD83(91) coordinates between GPS control points Δ 9211 and Δ 9339

SCALE: 1"=1000'

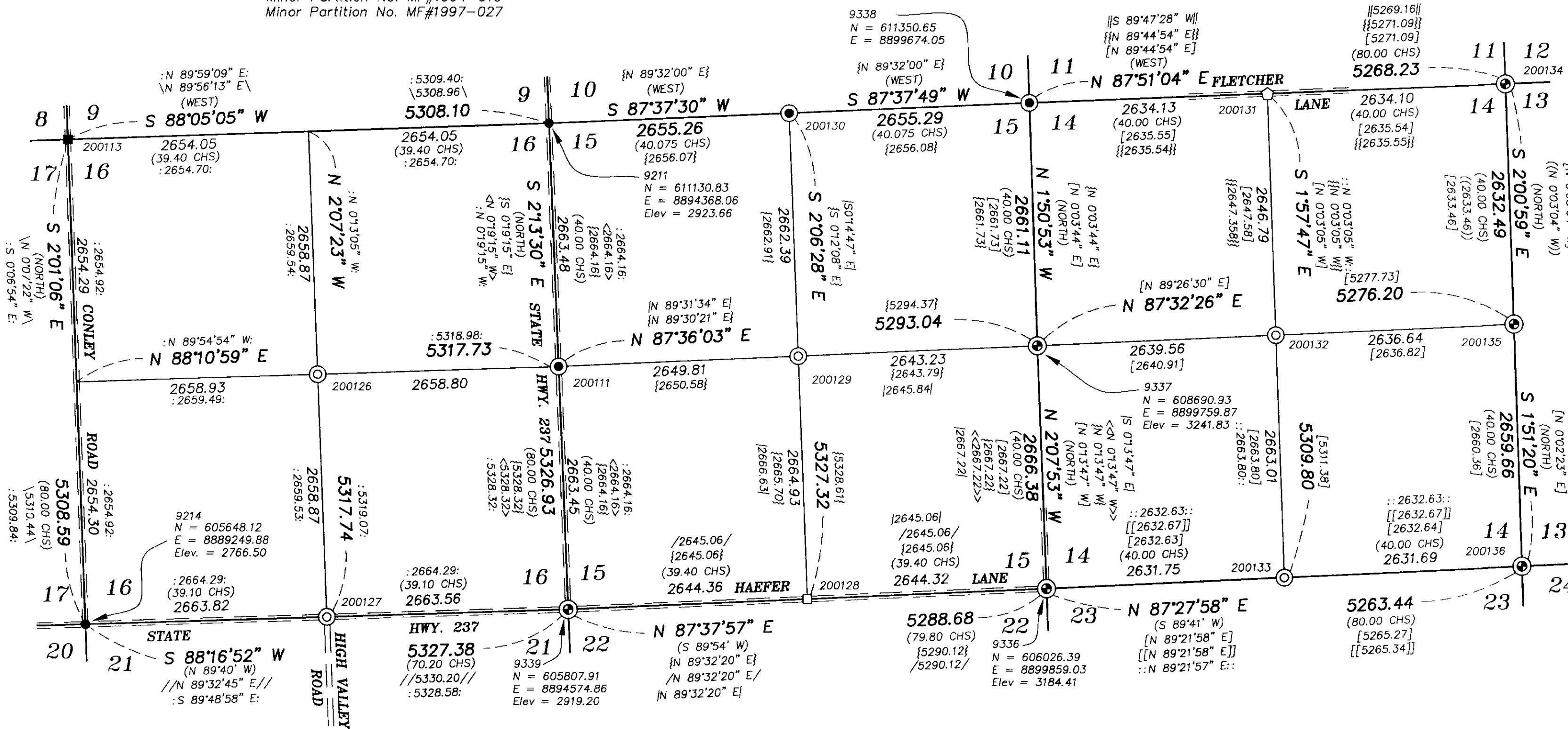
DATUM

NGVD 29 (elevations determined using GEOID 99)

LEGEND

- 9337
N = 608690.93
E = 8899759.87
Elev = 3241.83
- Fixed control State Plane Coordinates
- Found 2 1/2" aluminum monument set by Survey No. 051-1993
- Found 2 1/2" brass cap as per UNION COUNTY MONUMENTATION RECORDS
- Found 2 1/2" aluminum cap as per UNION COUNTY MONUMENTATION RECORDS
- Found 5/8" iron pin with plastic cap marked BGA SURVEY MARKER as per UNION COUNTY MONUMENTATION RECORDS
- Set 2 1/2" aluminum monument at position determined by Survey see UNION COUNTY MONUMENTATION RECORDS
- Set 2 1/2" copper clad monument at position determined by Survey see UNION COUNTY MONUMENTATION RECORDS
- Set 2 1/2" copper clad monument in water valve box at position determined by Survey see UNION COUNTY MONUMENTATION RECORDS
- () Record GLO measurement
- (()) Record measurement Survey No. 16-73
- [] Record measurement Survey No. 40-79
- [[]] Record measurement Survey Nos. 46-79 & 27-89
- { } Record measurement Survey Nos. 5-80, 31-84, 27-89, 047-1993, 044-1995, 008-1996, 018-1996, 022-1999, & Minor Partition Nos. 1994-13 & 1997-27
- {| } Record measurement Survey No. 49-81
- < > Record measurement Survey Nos. 21-83, 10-84, & 021-1999
- << >> Record measurement Survey Nos. 7-84 & 1-86
- / / Record measurement Survey No. 11-84
- // // Record measurement Survey No. 49-84
- | | Record measurement Survey No. 13-86
- || || Record measurement Survey No. 22-88
- ||| ||| Record measurement Survey No. 57-91
- : : Record measurement Survey Nos. 051-1993 & 036-1994
- :: :: Record measurement Survey No. 014-1997

CONVERGENCE ANGLE AT 200128
1'54'58"



NARRATIVE

This survey was performed at the request of the Union County Assessor. The purpose was to monument GLO corners and tie existing corners into a GPS network established by Eagle Survey Corporation for Union County in 1992 and 1993. I tied found monuments of Sections 14, 15, and 16. I then subdivided the section as per the 1978 BLM Manual. Proportionate positions have been used for these corners on numerous surveys as shown on the map. The bearings and distances are based on State Plane Coordinates NAD83(91). Elevations are NGVD 29 datum. I used GEOID 99 in determination of Ortho heights. Points used as fixed 3d control in the adjustment of the network have their coordinates and elevations printed beside them. Points used as fixed 2d control in the adjustment have Northings and Eastings printed next to them. I find no other problems with this survey.

NOTES

For monumentation information see Monumentation Record filed separately
For GPS Information Sheet, see Union County Surveyor GPS book in Union County Surveyor office, also filed with Monumentation Records

REGISTERED PROFESSIONAL LAND SURVEYOR
Gregory T. Blackman
OREGON JULY 13, 1973
GREGORY T. BLACKMAN
991
Renewal Date: Dec. 31, 2001

UNION COUNTY SURVEYOR
Date Received 3/29/01
Date Filed 3/31/01
By R. ROBINSON, Deputy
File No. 010-2001

BAGETT, GRIFFITH & BLACKMAN
2006 Adams Avenue, LaGrande, Oregon
Map of Survey
Sited in Sections 14, 15, and 16
Township 3 South, Range 40 East of the Willamette Meridian
UNION COUNTY, OREGON
SURVEYED FOR UNION COUNTY ASSESSOR
SURVEYED BY G.T.B. 3/15/2001
Scale: 1" = 1000' Drawn by: N.W.V. 3/15/2001

SURVEY NO. 010-2001