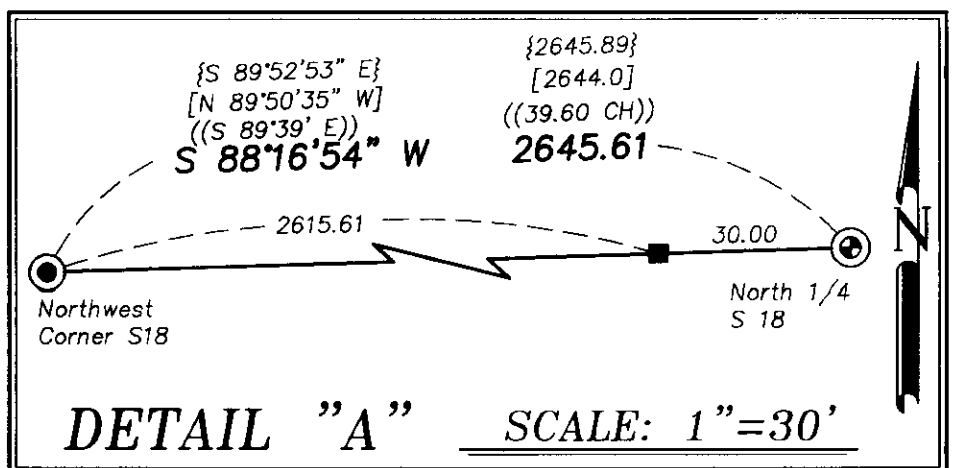


**NOTES**

For monumentation information see Monumentation Record filed separately

For GPS Information Sheet, see Union County Surveyor GPS book in Union County Surveyor office, also filed with Monumentation Records



**SCALE FACTORS**

Elevation Scale Factor = .99989486075  
 Projection Scale Factor = .99989715098  
 Combined Scale Factor = .99976202569



AVG. CONVERGENCE ANGLE  
1'52"19"

**BASIS OF BEARING**

Bearing as determined by using published NAD83(91) coordinates between GPS control points Δ 9922 and Δ 9305

**SCALE: 1"=1000'**

**DATUM**

NGVD 29 (elevations determined using GEOID 99)

**LEGEND**

- ⊗ Position of the Center West 1/16 as per Survey No. 72-77 monument has been obliterated
- ⊗ Found chisel mark on Manhole Rim set by Survey No. 72-77 accepted as 1/4 corner by Survey No. 12-80
- Found 5/8" iron pin with plastic cap marked BGA SURVEY MARKER set by Survey No. 31-87
- Found 2 1/2" aluminum monument set by Survey as noted see UNION COUNTY MONUMENTATION RECORDS
- ⊙ Found 2 1/2" aluminum monument as per UNION COUNTY MONUMENTATION RECORDS
- Found 2" copper clad monument in water valve box as per UNION COUNTY MONUMENTATION RECORDS
- ⊙ Set 2"x30" copper clad monument in water valve box at position determined by Surveysee UNION COUNTY MONUMENTATION RECORDS
- ⊙ Set 2 1/2"x30" aluminum monument at position determined by Survey see UNION COUNTY MONUMENTATION RECORDS

- 9922  
N = 578868.155 ft  
E = 887944.319 ft  
Elev = 2764.85 US ft
- Fixed Control State Plane Coordinates
- ( ) Record measurement of GLO contract number 102, by Timothy W. Davenport, dated July 20, 1863.
- (( )) Record measurement of GLO contract number 103, by David P. Thompson, dated September 3, 1863.
- [ ] Record measurement of Survey No. 14-71
- [[ ]] Record measurement of Survey No. 72-77
- { } Record measurement of Survey No. 31-87
- || } Record measurement of Survey No. 23-89
- < > Record measurement of Survey No. 004-1997
- << >> Record measurement of Survey No. 017-1997
- / / Record measurement of Survey No. 032-1999

**NARRATIVE**

This survey was performed at the request of the Union County Assessor. The purpose was to monument GLO corners and tie existing corners into a GPS network established by Eagle Survey Corporation for Union County in 1993 and 1999. The South 1/4 of Section 18 was set at the record position of Survey Nos. 113-78, 19-79, 31-79, 52-80, 79-81, 23-84, and 017-1997. I established the North 1/4 of Section 18 by tying the Northwest corner and a 30 ft. reference to the North 1/4 set by Survey No. 31-87. I extended the line between these monuments 30.00 feet. The Center 1/4 of Section 18 I set by intersection of a line run between the position of the Center West 1/16 as established by Survey No. 72-77 and the East 1/4, and a line run between the North 1/4 and South 1/4. I accepted the position established by Survey No. 72-77 as the Center West 1/16 because the improvements in the town of Union best fit this position and are a such monuments to the position of the corner. The bearings and distances are based on State Plane Coordinates NAD83(91). Elevations are NGVD 29 datum. I used GEOID 99 in determination of Ortho heights. Points used as fixed 3d control in the adjustment of the network have their coordinates printed beside them. I find no other problems with this survey.

**REFERENCE MATERIAL**

- UNION COUNTY MONUMENTATION RECORDS
- Original GLO contract No. 102, by Timothy W. Davenport, dated July 20, 1863.
- Original GLO contract No. 103, by David P. Thompson, dated September 3, 1863.
- UNION COUNTY SURVEYS
- Survey No. 14-71
- Survey No. 72-77
- Survey No. 12-80
- Survey No. 31-87
- Survey No. 23-89
- Survey No. 004-1997
- Survey No. 017-1997
- Survey No. 032-1999

REGISTERED PROFESSIONAL LAND SURVEYOR

*Gregory T. Blackman*

OREGON JULY 13, 1973

**GREGORY T. BLACKMAN**  
991

Renewal Date: Dec. 31, 2001

UNION COUNTY SURVEYOR

Date Received 3/29/01

Date Filed 3/31/01

By *R. Robinson Deputy*

File No. 007-2001

**BAGETT, GRIFFITH & BLACKMAN**  
2006 Adams Avenue, LaGrande, Oregon  
Map of Survey

Situated in Sections 18 and 19,  
Township 4 South, Range 40 East of  
the Willamette Meridian

UNION COUNTY, OREGON

SURVEYED FOR	UNION COUNTY SURVEYOR
SURVEYED BY	G.T.B. 2/21/01
Scale: 1" = 1000'	Drawn by: N.W.V. 2/21/01

SURVEY NO. 007-2001