

**LEGEND**

- Found 3/4" iron pipe set by Survey No. 18-89 (1922 remonumentation of LaGrande)
  - Found 5/8" iron pin with plastic cap marked BGA SURVEY MARKER set by Survey No. 38-79
  - Found 5/8" iron pin with plastic cap marked BGA SURVEY MARKER set by Survey No. 81-80
  - Found 5/8" iron pin with plastic cap marked BGA SURVEY MARKER set by Survey No. 93-80
  - ◆ Found 5/8" iron pin with plastic cap marked BGB SURVEY MARKER set by Minor Partition No. 1996-010
  - Found 5/8" iron pin with plastic cap marked BGB SURVEY MARKER set by Survey No. 033-1999
  - ⊙ Found 2 1/2" brass cap in water valve box as per Union County Monumentation Records
  - ⊙ Set 2 1/2" x 30" copper clad monument in water valve box marked BAGETT, GRIFFITH & BLACKMAN PLS 991
  - ▲ Set brass screw in lead plug in curb for reference monument to centerline intersection
- Centerline  
Reference line
- [ ] Record measurement of Coggan's 2nd Addition  
[[ ]] Record measurement of Honan's Addition  
{ } Record measurement of Williamson's Addition  
|| || Record measurement of Survey 78  
( ) Record measurement of Survey No. 32-87 and Minor Partition No. 1996-010

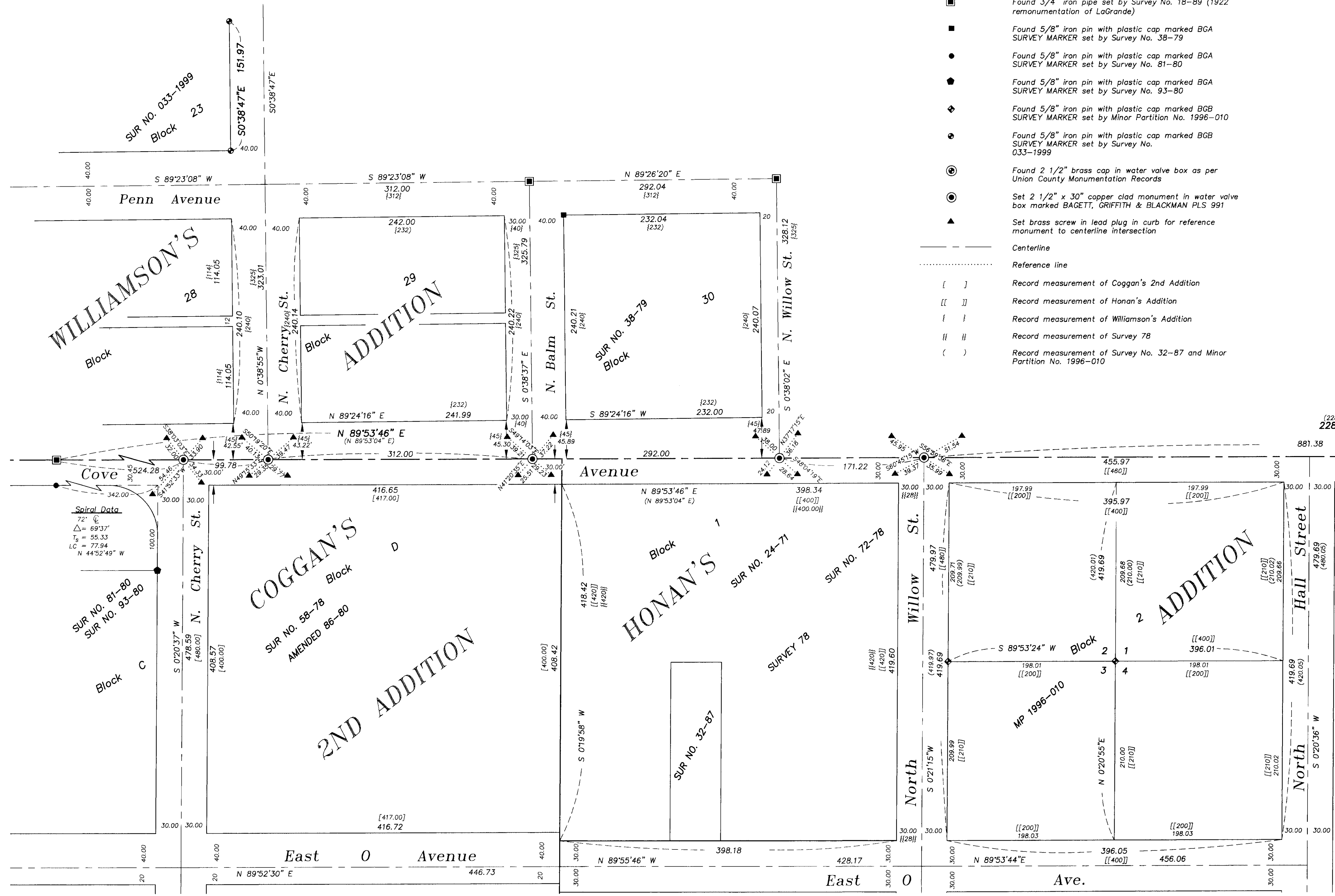
**BASIS OF BEARING**

Forward bearing as published by the U.S.C. and G.S. from Δ COLLEGE to Δ VALLEY Dated 1946.

**SCALE: 1"=60'**

**REFERENCE MATERIAL**

- UNION COUNTY MONUMENTATION RECORDS  
UNION COUNTY SURVEYS  
Survey No. 18-89 (1922 remonumentation of LaGrande)
- Survey 78
  - Survey No. 24-71
  - Survey No. 65-74
  - Survey No. 22-78
  - Survey No. 58-78
  - Survey No. 72-78
  - Survey No. 38-79
  - Survey No. 81-80
  - Survey No. 86-80
  - Survey No. 93-80
  - Survey No. 6-81
  - Survey No. 32-87
  - Survey No. 033-1999
  - UNION COUNTY PLATS
  - Coggan's 2nd Addition
  - Honan's Addition
  - Williamson's Addition
  - Minor Partition No. 1996-010



**NARRATIVE**

This survey was performed at the request of Norm Paullus on behalf of the City of LaGrande. Mr. Paullus wished to monument intersections along Cove Avenue. The centerline of Cove Avenue is the South line of Section 5 as shown on the plats of Coggan's 2nd Addition, Honan's Addition, and Williamson's Addition. I established this line between the Section corner and a pipe found to be on the Section line by numerous surveys. To establish the South "T" intersection of N. Cherry St. and Cove Avenue I located monuments set by Survey No. 81-80. From these located monuments I ran record measurements of said survey to locate said intersection. The North "T" intersection of N. Cherry St. and Cove Avenue I locate by running record measurements from found monuments set by Survey No. 033-1999 on N. Cherry St. The intersection of N. Balm Street and Cove Avenue I locate by running record measurements from a found monument of Survey No. 38-79. The North "T" intersection of N. Willow St. and Cove Avenue I establish by running record measurements from a found monument set by 38-79. The South "T" intersection of N. Willow St. and Cove Avenue I establish by running record bearings from found monuments set by Minor Partition No. 1996-10. There was an error in the location of the Section corner as located by Survey No. 32-87 and Minor Partition No. 1996-10. This amounts to approximately 0.3 ft. error in Northings for the lots abutting Cove Avenue. I hold the positions of the above mentioned survey and plat for Eastings and offset 30' from the true section line for Northings. I set 4 reference monuments in the curbs, brass screws in leadplugs, to each centerline monument. I find no other problems with this survey.

**NOTE**

Bearings shown on the lead plug references are from the lead plug through the centerline monument to the opposite lead plug

UNION COUNTY SURVEYOR  
Date Received 12/30/2000  
Date Filed 1/5/2001  
By R. Deary  
File No. 040-2000

REGISTERED PROFESSIONAL LAND SURVEYOR  
GREGORY T. BLACKMAN  
RENEWAL DATE: Dec. 31, 2001

BAGETT, GRIFFITH & BLACKMAN  
2006 Adams Avenue, LaGrande, Oregon  
Map of Survey  
Centerline intersections of Cove Avenue, located on the North line of Section 8, Township 3 South, Range 38 East of the Willamette Meridian  
UNION COUNTY, OREGON  
SURVEYED FOR CITY OF LAGRANDE  
SURVEYED BY G.T.B. 12/30/00  
Scale: 1" = 60' Drawn by: N.W.V. 12/30/00