

LOT LINE ADJUSTMENT

Situated in the South 1/2 of the Southeast 1/4 and the Southeast 1/4 of the Southwest 1/4 of Section 33, Township 2 South, Range 38 East of the Willamette Meridian

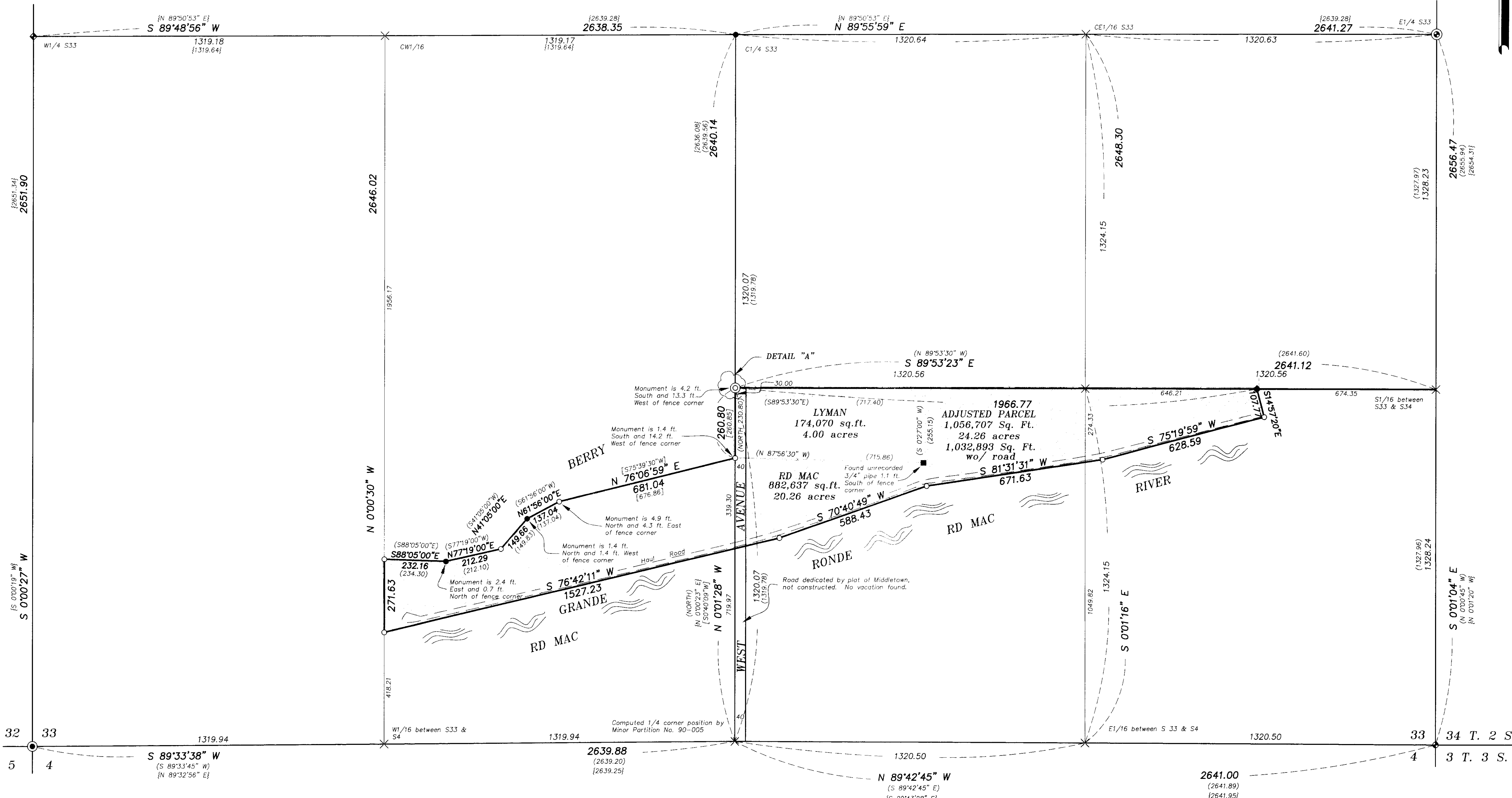
BASIS OF BEARING

Forward bearing as published by the U.S.C. and G.S. from Δ COLLEGE to Δ VALLEY Dated 1946.

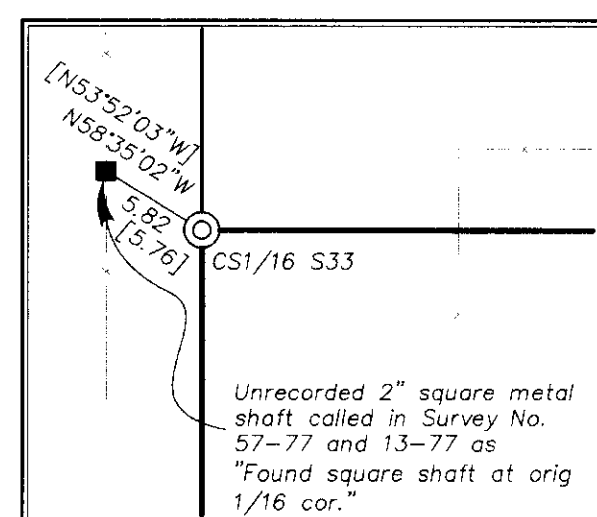
SCALE: 1" = 200'

LEGEND

- Found 5/8" iron pin set by Survey No. 56-73
- ◆ Found 2" brass cap in monument box as per Survey No. 32-84
- ◆ Found 5/8" iron pin with plastic cap marked BGA SURVEY MARKER set by Survey No. 31-85
- ⊙ Found 2" copper clad monument as per Union County Monumentation Records
- ⊙ Found 2" aluminum cap monument as per Union County Monumentation Records
- Found brass plate in concrete monument as per Union County Monumentation Records
- Found unrecorded monument as noted
- × Computed position as noted
- Set 5/8" x 30" iron pin with plastic cap marked BGB SURVEY MARKER
- ⊙ Set 5/8" x 30" iron pin with 1 1/2" aluminum cap, see Union County Monumentation Records
- () Record measurement of Survey No. 57-73
- [] Record measurement of Survey No. 57-77
- { } Record measurement of Survey No. 32-84
- Fenceline
- - - Haul road
- Area to accrue to Lyman from RD MAC ownership



DETAIL "A"



SCALE: 1" = 10'

REFERENCE MATERIAL

- Union County Monumentation Records
- UNION COUNTY SURVEYS
 Survey No. 13-73
 Survey No. 57-73
 Survey No. 57-77
 Survey No. 32-84
 Survey No. 31-85
- UNION COUNTY PLATS
 Plat of Middletown

DEED REFERENCES

- Microfilm No. MF#29212
 Microfilm No. MF#64156
 Microfilm No. MF#146650
 Microfilm No. MF#146651
 Microfilm No. MF#20000799
 Microfilm No. MF#20000800

NARRATIVE

This lot line adjustment was performed at the request of RD MAC and Lewis Lyman. Mr. Lyman wished to purchase the ponds and the road along the north side of the Grande Ronde River. The original North lot line was surveyed by Surveys 56-73 and 57-77. The area is farmed and the fences have been rebuilt. As a consequence, many of the monuments needed replaced. I found the record measurements of Survey No. 56-73 to fit found monuments within tolerances. To reestablish the positions of missing monuments I ran record measurements giving preference to bearings in cases of conflict. I found the 5/8" pin set by Survey No. 57-73 for the Center 1/4 of Section 33. Although this monument was not established as per the BLM manual it fits within 3 feet of a true intersected position. Considering this monument has been used for lines of ownership since 1973 and there is no original evidence of the West and North 1/4 corners I accept this monument as the Center 1/4. Survey 13-73 and Survey No. 57-77 call "found square shaft at orig. 1/16th cor." for the Center South 1/16th. I find no record of this monument ever being set by a surveyor and do not accept it as it is an unrecorded monument. Survey 56-73 set the 1/16th corner correctly and I reestablish it based on record information of Survey 56-73. Survey No. 57-77 was performed to resolve a disputed boundary line between Berry and RD MAC. This survey uses monuments set by Survey No. 56-73 but the measurements differ greatly. Considering that my remeasurements are in harmony with the record measurements of Survey No. 56-73 I use said survey to reestablish monuments on the disputed line rather than Survey No. 57-77. The plat of Middletown dedicates West Avenue to the public. Although this road has not been constructed I find no vacation record. The fences are away from the true corners as shown. I find no other problems with this survey.

UNION COUNTY SURVEYOR

Date Received 12/15/00

Date Filed 12/22/00

By R. [Signature]

File No. 028-2000

REGISTERED PROFESSIONAL LAND SURVEYOR

[Signature]

GREGORY T. BLACKMAN 991

Renewal Date: Dec. 31, 2001

BAGETT, GRIFFITH & BLACKMAN
 2006 Adams Avenue, LaGrande, Oregon
 Map of Survey

Situated in the South 1/2 of the Southeast 1/4 and the Southeast 1/4 of the Southwest 1/4 of Section 33, Township 2 South, Range 38 East of the Willamette Meridian
 UNION COUNTY, OREGON

SURVEYED FOR	RD MAC INC. & LEWIS LYMAN
SURVEYED BY	G.T.B.
Scale: 1" = 200'	Drwn by N.W.V.
	9/2000
	9/2000

SURVEY NO. 028-2000