

# SURVEYOR'S NARRATIVE

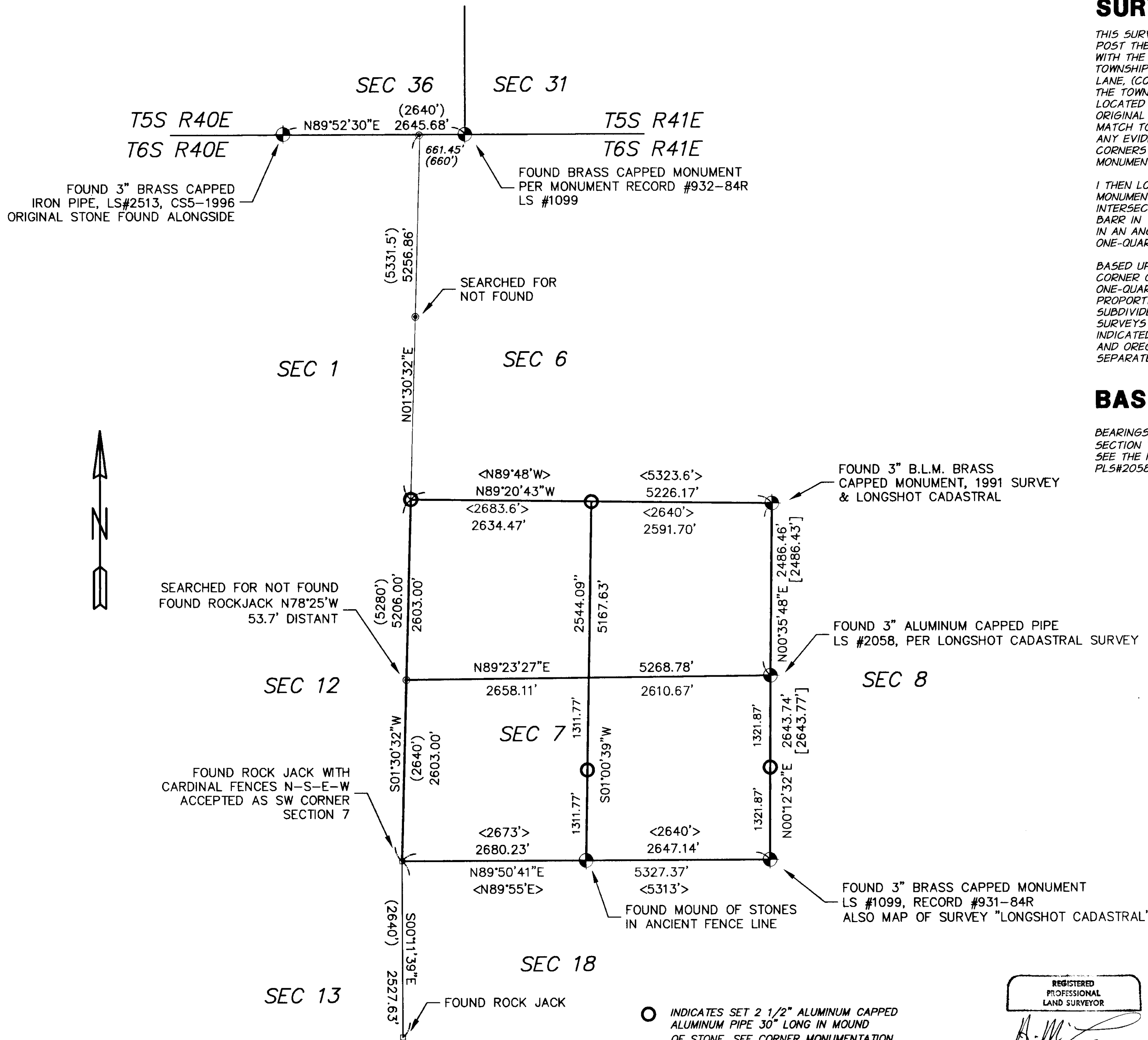
THIS SURVEY WAS PERFORMED FOR WALLOWA FOREST PRODUCTS TO MARK AND POST THEIR PROPERTY LINES PRIOR TO TIMBER HARVEST. THE SURVEY BEGAN WITH THE RETRACEMENT OF THE RANGE LINE BETWEEN RANGES 40 AND 41 OF TOWNSHIP 6 SOUTH, COMMENCING AT ITS INTERSECTION WITH THE TELOCASSET LANE, (COUNTY ROAD NO. 70) AND RUNNING NORTH TO THE INTERSECTION WITH THE TOWNSHIP LINE. ROCK JACKS, FENCE LINES, ROADS AND DRAINAGES WERE LOCATED IN AN EFFORT TO UTILIZE THE TOPOGRAPHICAL CALLS FOUND IN THE ORIGINAL SURVEY OF THE RANGE LINE IN 1876 BY J. STONE. I WAS UNABLE TO MATCH TOPOGRAPHICAL CALLS WITH THE ORIGINAL FIELD NOTES NOR COULD I FIND ANY EVIDENCE OF THE ORIGINAL STONES. I DID RECOVER THE TWO STANDARD CORNERS TO THE EAST AND WEST OF THE CLOSING CORNER FOR SECTION 6, BOTH MONUMENTS HAVING BEEN SET FROM ORIGINAL G.L.O. EVIDENCE.

I THEN LOCATED THE SOUTHEAST CORNER OF SECTION 7, ALSO AN ORIGINAL MONUMENT, AND RETRACED THE SOUTH LINE OF SECTION 7 BACK TO ITS INTERSECTION WITH THE RANGE LINE. THIS LINE WAS ORIGINALLY SURVEYED BY W. BARR IN 1885 AND THE TOPOGRAPHICAL CALLS LED ME TO A MOUND OF STONES IN AN ANCIENT FENCE NEAR THE PROPORTIONAL POSITION FOR THE SOUTH ONE-QUARTER, AND TO A ROCK JACK NEAR THE SOUTHWEST SECTION CORNER.

BASED UPON THIS EVIDENCE I ACCEPTED THE ROCK JACK AS THE SOUTHWEST CORNER OF THE SECTION AND PROPORTIONED THE POSITION OF THE WEST ONE-QUARTER CORNER AND THE NORTHWEST CORNER OF SECTION 7 BY SINGLE PROPORTION ALONG THE RANGE LINE. THE REMAINDER OF THE SECTION WAS THEN SUBDIVIDED IN ACCORDANCE WITH THE MANUAL OF INSTRUCTIONS FOR THE SURVEYS OF PUBLIC LANDS, 1973. MONUMENTS WERE SET AT THE POSITIONS INDICATED AND ACCESSORIES ESTABLISHED IN ACCORDANCE WITH THE MANUAL AND OREGON REVISED STATUES. MONUMENTATION RECORDS WERE FILED BY SEPARATE DOCUMENT.

# BASIS OF BEARINGS

BEARINGS ARE BASED UPON THE EAST LINE OF THE SOUTHEAST ONE-QUARTER OF SECTION 7 BEING  $N00^{\circ}12'32"E$  BETWEEN THE MONUMENTS SHOWN HEREON. SEE THE MAP OF SURVEY OF THE LONGSHOT CAD ASTRAL BY RONALD E STOLL, PLS#2058, OCTOBER 1998.



REGISTERED PROFESSIONAL LAND SURVEYOR
Date Received <u>8/31/00</u>
Date Filed <u>9/31/00</u>
By <u>[Signature]</u>
File No. <u>025-2000</u>

REGISTERED  
PROFESSIONAL  
LAND SURVEYOR

[Signature]

D E G O N  
JAN 21, 1992  
HARMON E. MCLENDON  
2537

Renews 12/31/00

<b>ANTELOPE CREEK CADASTRAL</b>		JOSEPH, OR.
<b>SECTION 7, T6S, R41E, W.M.</b>		
<b>UNION COUNTY, OREGON</b>		
WALLOWA FOREST PRODUCTS		
SCALE: 1" = 1000'	anderson perry Associates, Inc. ENGINEERING SURVEYING MATERIALS TESTING LA GRANDE, OR. WALLA WALLA, WA. BAKER CITY, OR.	SHEET
DATE: JULY, 2000		<b>1/1</b>
JOB NO. 2723-90		

- INDICATES SET 2 1/2" ALUMINUM CAPPED ALUMINUM PIPE 30" LONG IN MOUND OF STONE, SEE CORNER MONUMENTATION RECORD, FILED SEPARATELY
- <N89°55'E> G.L.O. MEASUREMENT BY W. BARR IN 1885.
- (N89°55'E) G.L.O. MEASUREMENT BY J. STONE IN 1876.
- [N89°55'E] RECORD DATA PER LONGSHOT CADASTRAL SURVEY LS #2058, OCT. 1998.