

BASIS OF BEARING

The line between the found monument at the East 1/4 corner of Section 7 and the found Monument at the West 1/4 corner of Section 7, being S 89°34'36" W as stated on map of Survey Number 16-86, Union County Survey Records.

SCALE: 1"=300'

REFERENCE MATERIAL

Union County monumentation records.
 GLO Contract #102 and 103.
 Survey Number 9-74
 Survey Number 16-86
 Old Book of Survey Pages 185 and 261.

LEGEND

- Found 5/8" iron pin set by Survey Number 9-74
- Computed position of pin set by Survey Number 9-74, no pin found.
- ⊙ Found 5/8" iron pin with 1 1/2" aluminum cap set by Survey Number 16-86, see Union County monumentation records.
- ⊖ Set 2 1/2" x 30" aluminum monument see monumentation records filed separately
- X - Existing fence line
- ||||| Joseph Branch of Union Pacific Railroad
- () Record measurement original GLO notes.
- (()) Voelz record from Survey Number 9-74.
- [] Record bearing or distance of Survey 118, Old Book of Surveys Page 261, by County Surveyor Curtis.
- { } Record bearing or distance of Survey 90, Old Book of Surveys Page 185, by County Surveyor Kimbrell

NARRATIVE

This survey was a part of the County Surveyors corner restoration program. It was my intent to recover and set the Southeast corner of Section 6, the Northeast corner of Section 6 and the East quarter corner of Section 6. All of these three corners were original set in 1863 by the GLO. In October of 1889, the Northeast and Southeast corner of Section 6 were recovered by Kimbrell (see survey 90 on page 185 of old book of surveys). Kimbrell also set a Stone for the East quarter corner. It appears that he used proper methods to perpetuate the corners. In 1890, County Surveyor Curtis tied the section corners to the centerline of the railroad track, recording an angle to the centerline as well as a distance to the corners, (see survey 118 page 261 of old book of surveys). Jim Voelz found a stone on survey 9-74 at the southeast corner of Section 6, but did not accept it. The original corner was a post. I recovered the same stone, and found it to have chisel marks. I applied the record angle to the existing centerline of the tracks, and applied the bearing to the stone position and intersected the centerline of the tracks. I find the distance from the stone to the intersection point to be virtually identical to the Curtis distance (974.4 ft record to my distance of 974.44 ft) I thereby accept the stone as the corner for the Southeast corner of section 6. I then run northeasterly along the tracks record distance by Curtis, and turn his record angle and set the Northeast corner of Section 6 at the Curtis record distance from the tracks. I then proportion the East quarter corner of Section 6 into position, using the GLO record calls. I find the Section corners to fall very harmoniously with existing fences and the existing roads. It should be noted that the bearing from the centerline of the tracks to the Section corners are not necessarily the bearing of the Section line. The bearing of the section lines are dependent upon the location of the GLO corner as it is found. I find no other problems with this survey.

UNION COUNTY SURVEYOR

Date Received 6/7/00

Date Filed 7/15/00

By R. ROBINSON, Deputy

File No. 11-2000

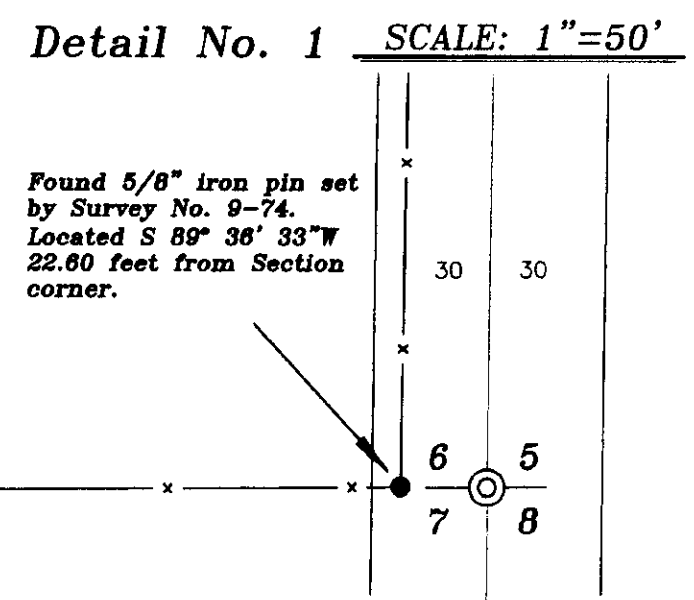
REGISTERED PROFESSIONAL LAND SURVEYOR

Gregory T. Blackman

OREGON JULY 13, 1973

GREGORY T. BLACKMAN 991

Renewal Date: Dec. 31, 2001



BAGETT, GRIFFITH & BLACKMAN

2006 Adams Avenue, LaGrande, Oregon

Map of Survey

Remonumentation of the East line of Section 6, Township 2 South Range 39 East of the Willamette Meridian.

UNION COUNTY OREGON

SURVEYED FOR	UNION COUNTY SURVEYOR	
SURVEYED BY	GTB	3-22-00
Scale: 1"= 300'	Drawn by: GTB	3-22-00