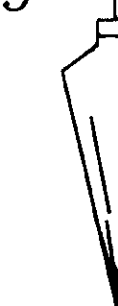


**BOUNDARY SURVEY**  
 Located in the NE 1/4 and the SE 1/4  
 of SECTION 36, T. 2 S., R. 37 E., WM.,  
 Survey Performed in February, 2000

Ferguson Surveying



Engineering



P.O. Box 519, 210 E. Main  
 MT. VERNON, OR 97865  
 PHONE (541)932-4520  
 FAX (541)932-4430  
 EMAIL dfse@highdesertnet.com

REGISTERED  
 PROFESSIONAL  
 LAND SURVEYOR

OREGON  
 JULY 16, 1988  
 DOUGLAS M. FERGUSON  
 848  
 RENEWAL DATE:  
 12/31/01

**REFERENCES**

- OREGON STATE HIGHWAY DEPT., DRG. NO. 88-7-1
- UNION COUNTY SURVEY NO. 019-90
- UNION COUNTY SURVEY NO. 6-78
- UNION COUNTY DEED RECORDS, BOOK 140, PAGE 153

**NARRATIVE**

This survey was performed at the request of the Oregon Department of Transportation. The purpose of this survey is to locate and monument the northerly line of the tract of land as described in Book 140, Page 153 of the Union County Deed Records.

In order to perform this survey, the location of the Southeast Corner and the East 1/4 Corner of Section 36, T.2S, R.37E, and the East 1/4 Corner of Section 31, T.2S, R.38E, WM. are located by field measurements. The Geodetic Coordinates, NAD 83(91), for these corners, as provided by Union County, are converted to NAD 27 Geodetic Coordinates using National Geodetic Survey software NADCON version 2.11. These NAD 27 Geodetic Coordinates are then converted to Oregon State Plane, North Zone coordinates and reduced to a Local Datum Plane See the COORDINATE CONVERSION TABLE. The field measurements are then compared to the Local Datum Plane(LPD) coordinates and are found to be virtually identical as shown.

The northeast corner, the northwest corner, and the easterly and westerly line monuments of this tract are located based on the datum and measurements given in Book 140, Page 153 of the Union County Deed Records. The South line of the Northeast quarter of Section 36, the East line of the Northwest quarter of the Southeast quarter of Section 36, and the northerly right of way line of the Old Oregon Trail Highway are not located during this survey.

**COORDINATE CONVERSION TABLE**  
 (See NARRATIVE)

NOTE: Geodetic Coordinates converted from NAD83(91) to NAD27 using National Geodetic Survey program NADCON, V2.11. Local Datum Plane Conversion Factor calculated using Sea Level Reduction of 0.99985652 and a Scale Factor of 0.99989991.  
 OR NAD 27 to LPD conversion factor = 1.00024361

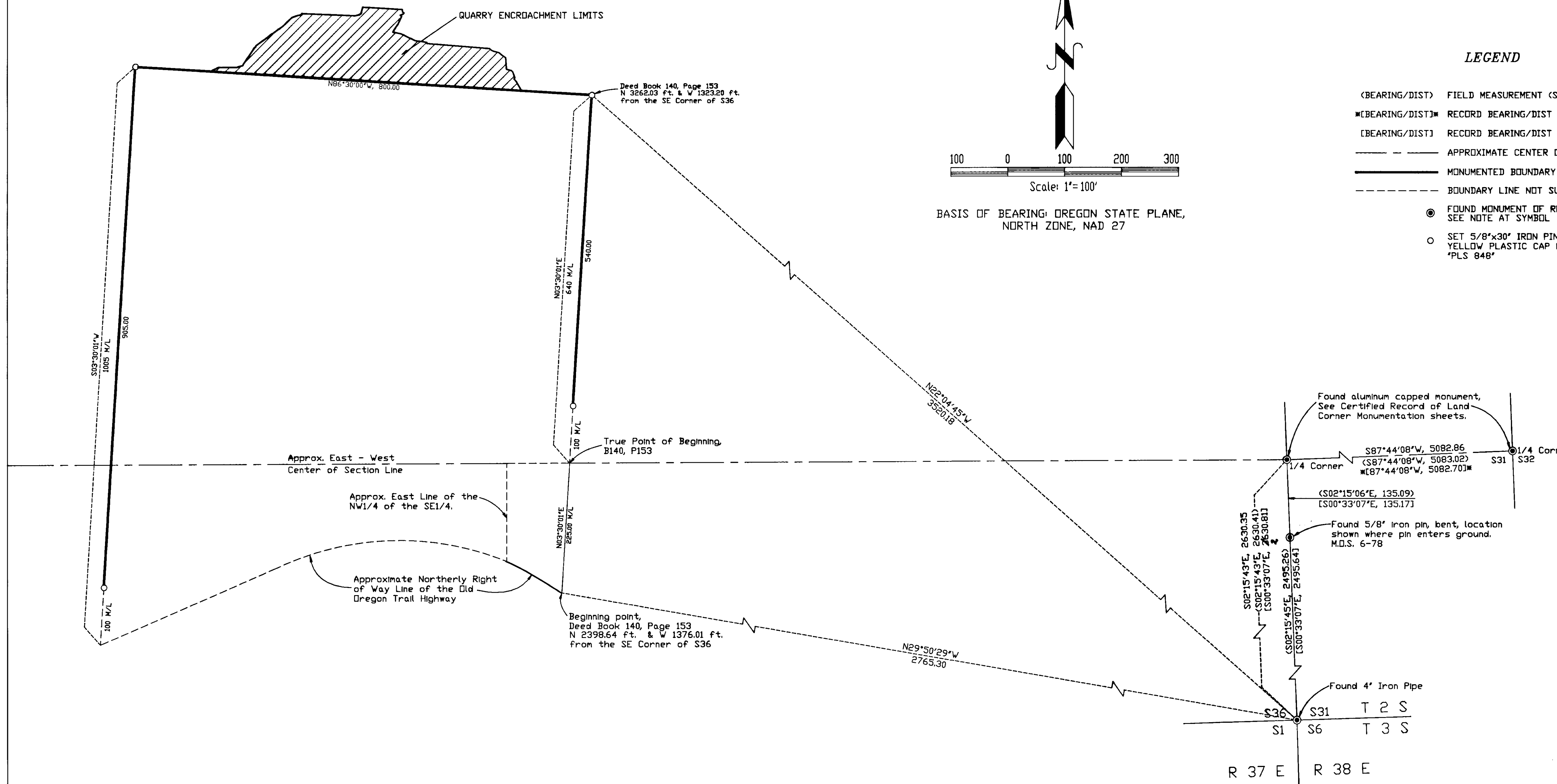
T. 2 S., R. 38 E., WM, EAST 1/4 CORNER SECTION 31 UNION COUNTY STATION NAME: 9223			
GEODETTIC COORDINATES			
NAD83(91)	N45°20'51.62790"	W118°05'44.90366"	
NAD27	N45°20'51.10562"	W118°05'48.69339"	
NAD27(OR N)			
NORTH	EAST	EL(NGVD29)	
622038.7716	2618017.0455	2800.35	
LPD			
622190.3065	2618654.8206	2800.35	

T. 2 S., R. 37 E., WM, SOUTH EAST CORNER SECTION 36 UNION COUNTY STATION NAME: 9613			
GEODETTIC COORDINATES			
NAD83(91)	N45°20'24.64278"	W118°06'59.48105"	
NAD27	N45°20'25.16693"	W118°06'55.68893"	
NAD27(OR N)			
NORTH	EAST	EL(NGVD29)	
619210.3300	2613043.1800	3083.85	
LPD			
619361.1758	2613679.7434	3083.85	

T. 2 S., R. 37 E., WM, EAST 1/4 CORNER SECTION 36 UNION COUNTY STATION NAME: 9224			
GEODETTIC COORDINATES			
NAD83(91)	N45°20'50.60794"	W118°06'59.84822"	
NAD27	N45°20'51.13183"	W118°06'56.05581"	
NAD27(OR N)			
NORTH	EAST	EL(NGVD29)	
621837.9900	2612939.3900	3003.16	
LPD			
621989.4760	2613575.9282	3003.16	



**LEGEND**

- (BEARING/DIST) FIELD MEASUREMENT (See NARRATIVE)
- \*(BEARING/DIST)\* RECORD BEARING/DIST FROM M.D.S. #6-78
- [BEARING/DIST] RECORD BEARING/DIST FROM M.D.S. #019-90
- APPROXIMATE CENTER OF SECTION LINE
- MONUMENTED BOUNDARY LINE
- - - - BOUNDARY LINE NOT SURVEYED
- FOUND MONUMENT OF RECORD SEE NOTE AT SYMBOL
- SET 5/8"x30" IRON PIN WITH A YELLOW PLASTIC CAP MARKED "PLS 848"

UNION COUNTY  
 SURVEYOR

Date Received: 5/5/2000  
 Date Filed: 5/10/2000  
 [Signature]  
 File No: 005-2000

SURVEY NO. 005-2000