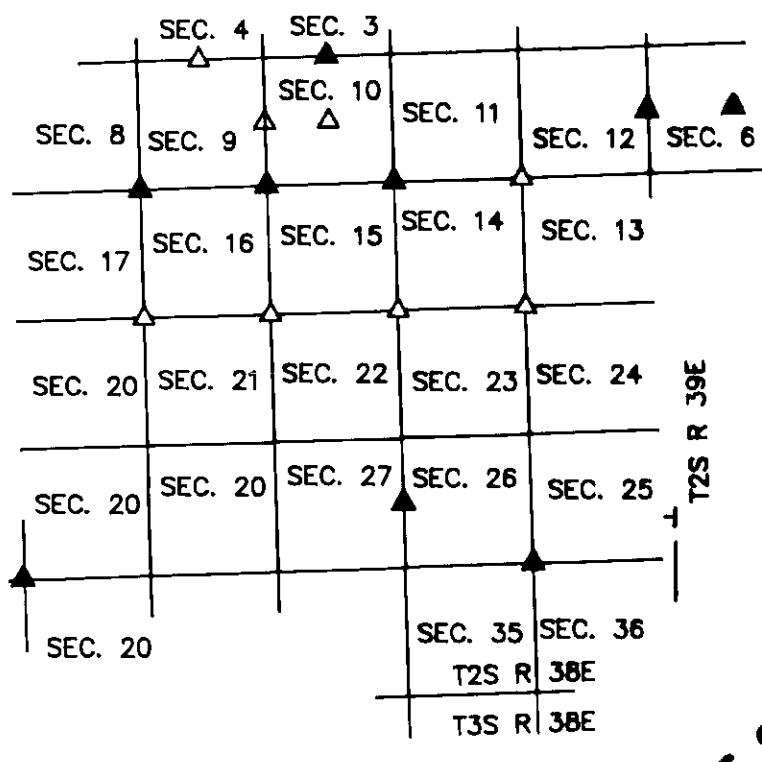
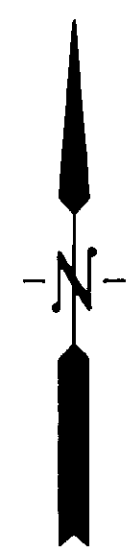
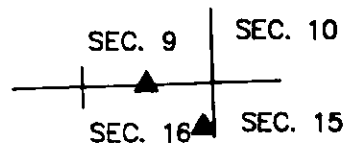


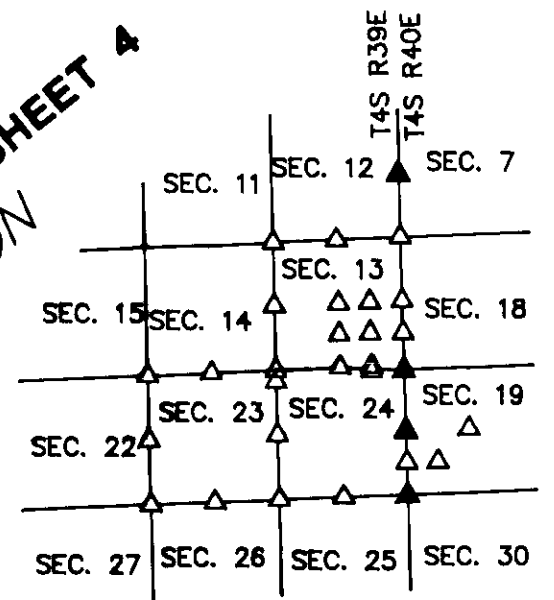
SEE SHEET 2  
SANDERSON



SEE SHEET 3  
SUMMERVILLE



SEE SHEET 4  
UNION



**LEGEND**

- △ GEODETIC CONTROL STATION SET - SEE DETAIL SHEETS FOR SPECIFICS FOR EACH STATION
- ▲ GEODETIC CONTROL STATION FOUND - SEE PREVIOUS GEODETIC SURVEYS FOR DETAILS FOR EACH STATION

<b>UNION COUNTY SURVEYOR</b>	
Date Received	1/28/00
Date Filed	1/25/01
By	R. Robinson, Deputy
File No.	003-2000

SURVEYOR: WLC
DRAWN BY: TJH
DATE: 6/30/99
SCALE: 1"=8000'
JOB NO. 99-005
SHEET 1
OF 67

**GEODETIC SURVEY**  
FOR  
UNION COUNTY  
AT/NEAR THE GOV'T CORNERS  
IN SEC. 26, 35, T1N, R38E  
ON E. LINE SEC. 13, 23, & 24, T4S, R39E  
WILLAMETTE BASELINE & MERIDIAN  
UNION COUNTY, OREGON

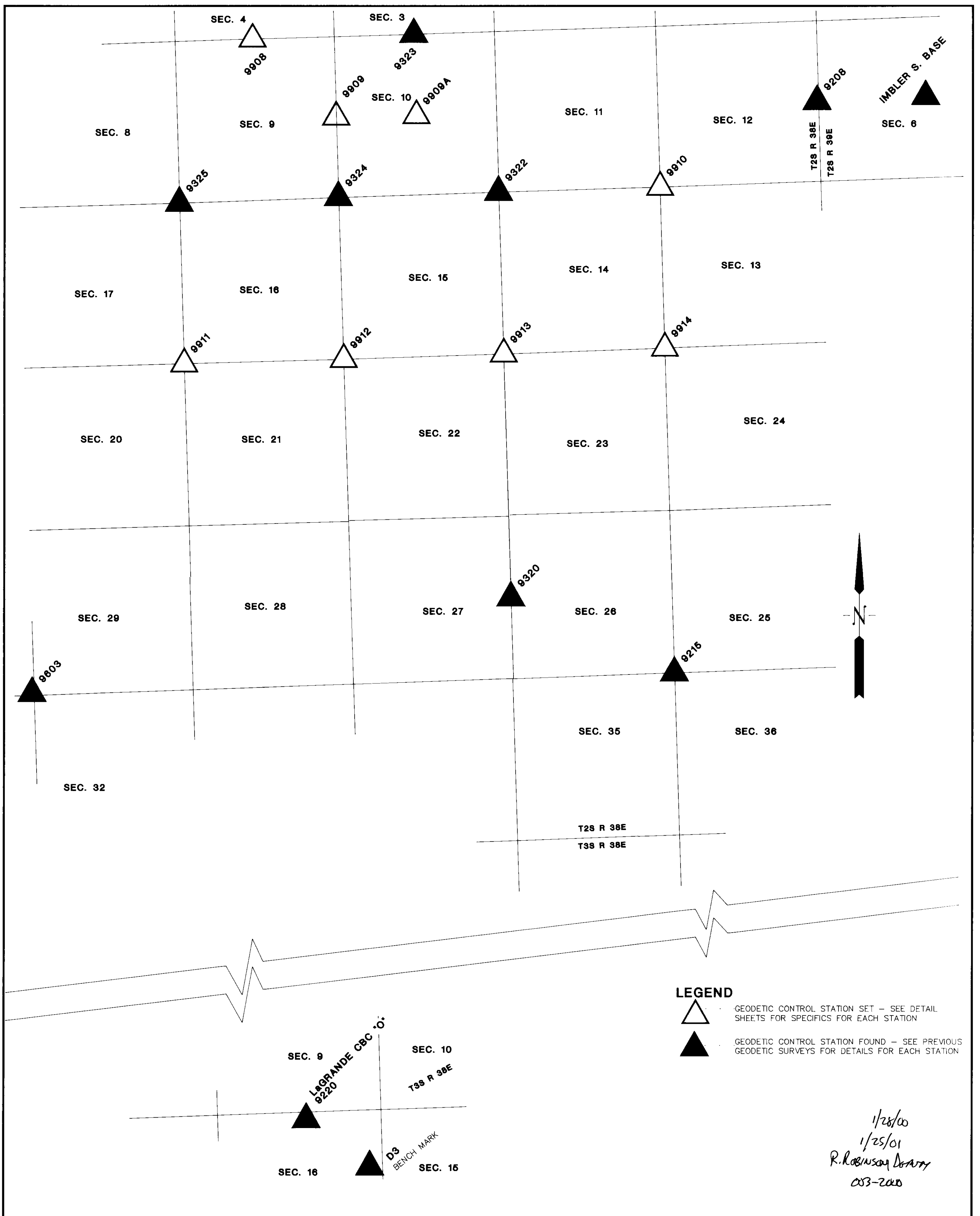


*Albert Hertel 1-26-00*



EXPIRES 6/30/01

NO.	REVISION	DATE





**LEGEND**

-  GEODETIC CONTROL STATION SET - SEE DETAIL SHEETS FOR SPECIFICS FOR EACH STATION
-  GEODETIC CONTROL STATION FOUND - SEE PREVIOUS GEODETIC SURVEYS FOR DETAILS FOR EACH STATION

1/28/00  
1/25/01  
R. Robinson Deary  
003-2000

SURVEYOR: WLC
DRAWN BY: TJH
DATE: 6/30/99
SCALE: 1"=2000'
JOB NO. 99-005
SHEET 3
OF 67

**GEODETIC SURVEY**  
FOR  
UNION COUNTY  
AT/NEAR THE GOV'T CORNERS  
IN SEC. 26, 35, T1N, R38E  
ON E. LINE SEC. 13, 23, & 24, T4S, R39E  
WILLAMETTE BASELINE & MERIDIAN  
UNION COUNTY, OREGON

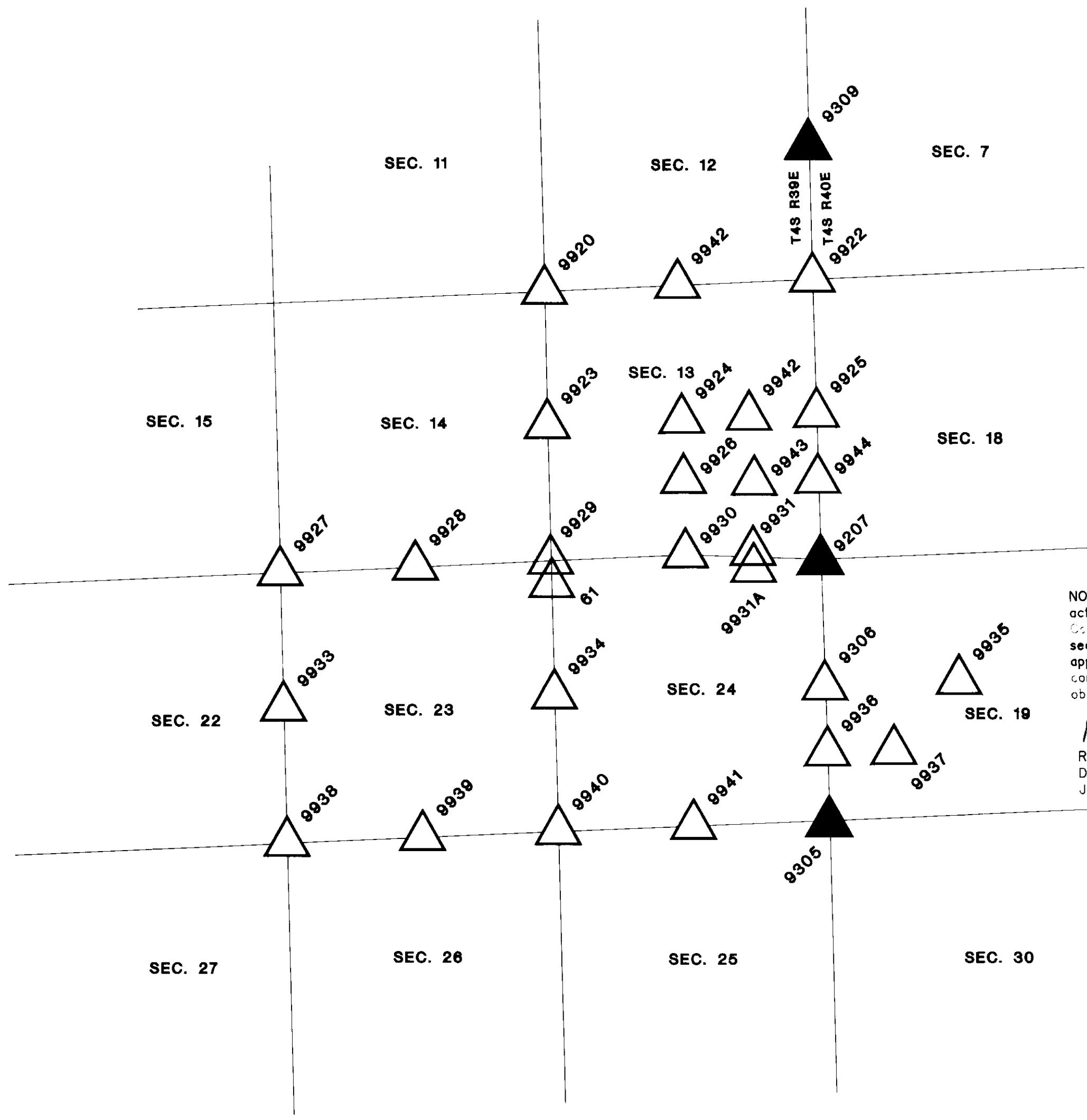
**REGISTERED  
PROFESSIONAL  
LAND SURVEYOR**

*Albert Hertel 1-21-99*

**OREGON**  
JULY 18, 1896  
ALBERT HERTEL  
1896

EXPIRES 6/30/01



NO.	REVISION	DATE	BY



NOTE: Point designated as 9207 is in actuality Point number 9307 from the 1997 County GPS Survey. This is not the actual section corner, but is an eccentric approximately 175 feet south of the true corner. The Section corner could not be observed due to canopy.

*Rick G. Robinson*  
 Rick G. Robinson, OPLS 2219  
 Deputy Union County Surveyor  
 January 25, 2001

**LEGEND**

-  GEODETIC CONTROL STATION SET - SEE DETAIL SHEETS FOR SPECIFICS FOR EACH STATION
-  GEODETIC CONTROL STATION FOUND - SEE PREVIOUS GEODETIC SURVEYS FOR DETAILS FOR EACH STATION

*1/28/00*  
*1/25/01*  
*R. Robinson, Deputy*  
*003-2000*

SURVEYOR: WLC
DRAWN BY: TJH
DATE: 6/30/99
SCALE: 1"=2000'
JOB NO. 99-005
SHEET 4
OF 67

**GEODETIC SURVEY**  
 FOR  
 UNION COUNTY  
 AT/NEAR THE GOV'T CORNERS  
 IN SEC. 26, 35, T1N, R38E  
 ON E. LINE SEC. 13, 23, & 24, T4S, R39E  
 WILLAMETTE BASELINE & MERIDIAN  
 UNION COUNTY, OREGON

**REGISTERED PROFESSIONAL LAND SURVEYOR**  
  
**OREGON**  
 JULY 18, 1990  
 ALBERT HERTEL  
 1896  
 EXPIRES 6/30/01

NO.	REVISION	DATE