

LEGEND

- Found monument as noted:
- Found 2 1/2" aluminum cap monument as per Survey No. 23-89
- ⊙ Found 2 1/2" aluminum cap monument as per Survey No. 003-1998.
- Found 2 1/2" copper clad monument in water valve box as per Survey No. 003-1998
- ⊙ Set 2 1/2" x 30" aluminum cap monument see Union County Monumentation Records.
- ⊙ Set 2 1/2" x 30" copper clad monument in water valve box see Union County Monumentation Records.
- x — Fenceline
- () Record bearing and distance of GLO records
- (()) Record bearing and distance of Book of Old Surveys Page 14
- [] Record bearing and distance of Survey No. 72-77

REFERENCE MATERIAL

Original GLO contracts:
 Number #103, dated 3 September 1863, by David P. Thompson
 Number #102, dated 20 July 1863, by Timothy W. Davenport

Union County Surveys
 Book of Old Surveys No. 8
 Book of Old Surveys No. 14
 Book of Old Survey No. 309
 Book of Old Survey No. 348
 Survey No. 72-77
 Survey No. 14-71
 Survey No. 20-81
 Survey No. 36-82
 Survey No. 003-1993
 Survey No. 003-1998

BASIS OF BEARING

Solar observation taken at the Southeast corner of Section 13, Township 4 South, Range 39 East of the Willamette Meridian.

SCALE: 1" = 600'

NARRATIVE

This survey was performed at the request of the Union County Assessor. I was to locate the position of the exterior of Sections 13, 23, and 24, and subdivide the Southeast 1/4 of Section 13. There is very little evidence of original GLO surveys in this area. Old Book of Surveys Page 14 ran along the West line of the Southwest 1/4 of Section 23. I find the fences to be harmonious with the measurements recorded in said survey and conclude that the fences were moved to the position established by said survey. The Section corner common to Sections 22, 23, 26, and 27, I establish at a fence corner which is harmonious with record GLO measurements as remeasured in this Township. The 1/4 corner between Sections 23 and 22 I establish along the Section line in an ancient rock east west fenceline that is harmonious with the record distance of Old Book of Surveys Page 14 which found the original GLO corner. The Section corner common to Sections 14, 15, 22, and 23, was set at the fence corner. I found ties to this position in a Union Pacific Railroad Survey to be harmonious with this fence corner and accept it as the best available evidence. At the Southeast corner of Section 23 I found an ancient fence corner which was harmonious with the original GLO measurement from the Southeast corner of Section 24 as located by Survey No. 23-89.

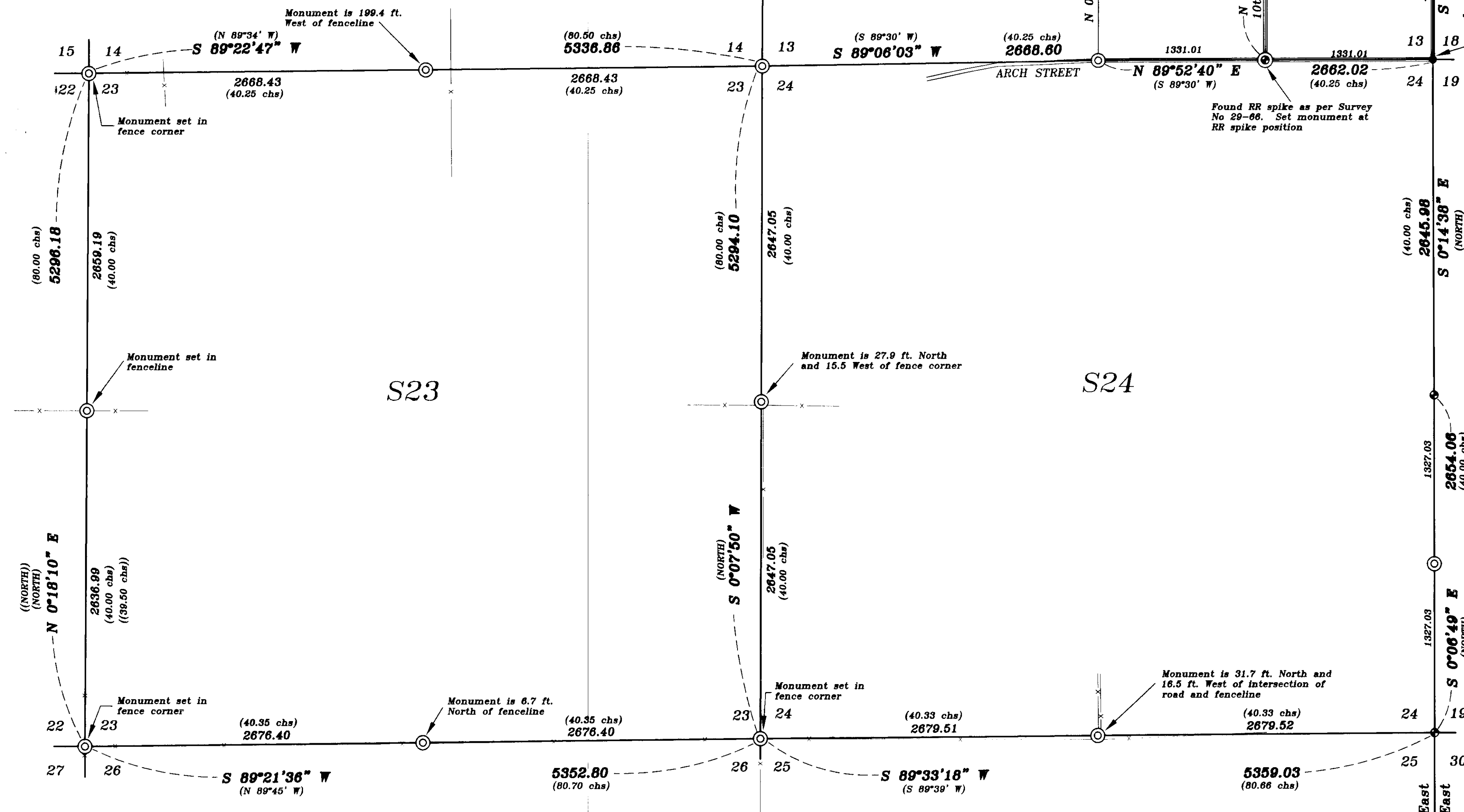
The East line of Section 24 was established by Survey No. 23-89. I accept the position of this line as per said survey. On the North line of Section 24 I hold the position of a railroad spike located at the E1/16 between Sections 13 and 24 as a corner by common report. I then project a line between the Northeast corner of Section 24 and said E1/16 the proportionate distance to establish the 1/4 corner common to Sections 13 and 24.

The East and North lines of Section 13 were established by Survey No. 003-1998. I held the position of the monument set at the S 1/16 between 13 and 18 as it has been used as a 1/16th corner in Survey Numbers 72-77, 12-92, and 03-98. The 1/4 between Sections 13 and 14 I establish at the intersection of a line run between the Section corners and the centerline of Miller Lane. I accept the Center 1/4 of Section 13 as set by Survey No. 003-1998, see said survey for details. I then proportion the remainder of the corners in Sections 13, 23, and 24, and subdivide Section 13 using standard survey practice detailed in BLM MANUAL OF SURVEYING INSTRUCTIONS 1973.

I find no other problems with this survey.

NOTE:

For monumentation information see monumentation sheets filed separately



Found chisel cut in West edge of manhole rim as per Union County Monumentation Records

Found 1/2" steel pipe as per Union County Monumentation Records

Found RR spike as per Survey No. 23-89. Set monument at RR spike position

REGISTERED PROFESSIONAL LAND SURVEYOR
 GREGORY T. BLACKMAN
 OREGON JULY 18, 1979
 Renewal Date: Dec. 31, 1999

UNION COUNTY SURVEYOR
 Date Received 9/13/99
 Date Filed 10/8/99
 By R. Robinson Deputy
 File No. 032-1999

BAGETT, GRIFFITH & BLACKMAN
 2006 Adams Avenue, LaGrande, Oregon
 Map of Survey
 A survey of Sections 13, 23, and 24, Township 4 South, Range 39 East of the Willamette Meridian
 UNION COUNTY, OREGON
 SURVEYED FOR Union County Assessor
 SURVEYED BY G. T. B. 8/99
 Scale: 1" = 600' Drawn by: N. W. V. 8/99